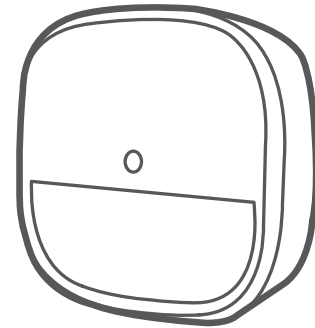




User Manual

Motion Sensor



Anker Innovations Limited. All rights reserved. eufy Security and eufy Security Logo are trademarks of Anker Innovations Limited, registered in the United States and other countries. All other trademarks are the property of their respective owners.

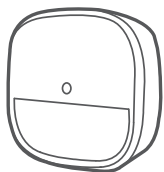
Model: T8910
51005002023 V01

TABLE OF CONTENTS

What's Included	02	10	Specifications
Product Overview	03	11	Notice
Mounting the Motion Sensor	05	14	Customer Service

WHAT'S INCLUDED

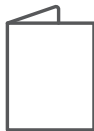
For Motion Sensor Installation



Motion Sensor T8910



Mounting Screws



User Manual



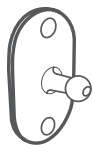
Welcome Card



CR123A Battery

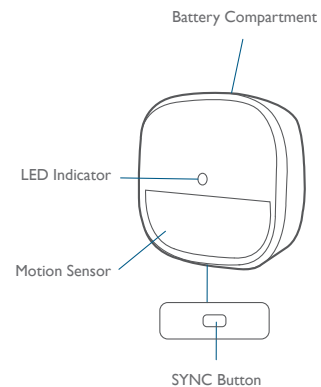


3M Adhesive Strip



Mount

PRODUCT OVERVIEW



Installing Batteries

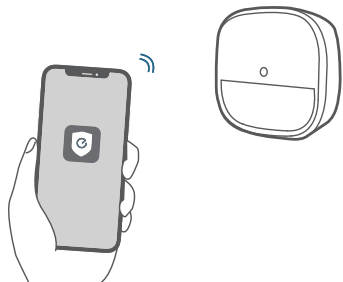
Remove the battery compartment lid on the Motion Sensor and insert the provided CR123A battery.

Adding Motion Sensor to Your System

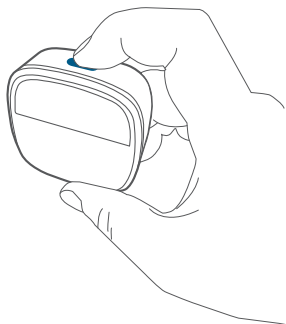
Note: Make sure you've completed the setup of your eufy Security HomeBase.

Follow the onscreen instructions on the Eufy Security app to add your motion sensor.

1. Choose **Add Device**, then select **Motion Sensor** to add it to your system.



2. Press and hold the **SYNC** button for 2 seconds until the LED indicator blinks blue. The Motion Sensor is waiting to pair.



3. The LED indicator turns solid blue to indicate the pairing is successful.

LED Status	Description
Blinking blue continuously	Waiting to connect
Solid blue for 5s	Paired successfully
Off	Failed to connect to the HomeBase

Note: The LED indicator, device name and timer can be customized on the eufy Security app.

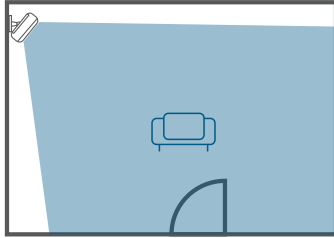
MOUNTING THE MOTION SENSOR

Find a Location for Mounting

The motion sensor can be installed on a wall. To get optimal detection coverage, consider the following factors before mounting the motion sensor:

- Determine the area of detection and ensure there is an unobstructed field of view
- Determine the height and tilt angle
- Avoid direct sources of heat or sunshine, curtains, plants, or pets.

Ideally, the motion sensor should be installed on a wall facing the door through which people are likely to enter. We recommend placing the motion sensor close to a corner to get the optimal detection coverage.

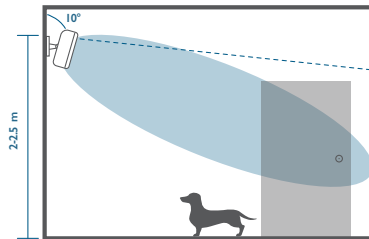


You can also install the motion sensor in your garage, dining room, or basement.

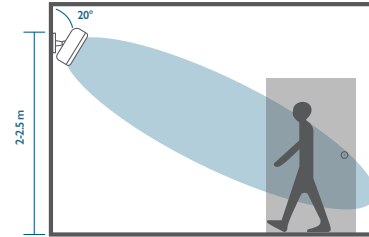
Height and Tilt Angle

The motion sensor should be mounted 2m / 6⁴/₇ ft to 2.5m / 8¹/₅ ft above the floor with a tilt angle of preferably 20° downwards. If you have a large pet weighing more than 50 lb, change to a 10° downwards tilt.

With Pets



No Pets



To better detect the area where people may break in, rotate the motion sensor horizontally up to 30°.

Sensitivity

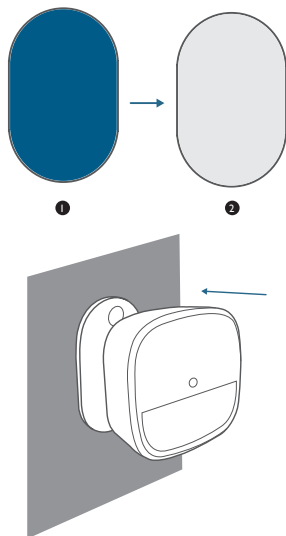
The sensitivity can be adjusted based on the room size. The default setting is medium sensitivity.

Mount the Motion Sensor

I. There are two methods of mounting the motion sensor at the selected location:

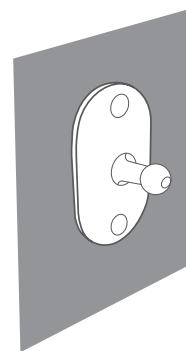
- Use the 3M adhesive strip:

- ① Snap the adjustable wall mount onto the motion sensor base.
- ② Stick the adhesive strip on the back of the sensor, remove the film, and stick the motion sensor on the wall.
- ③ Rotate the motion sensor to adjust the detection coverage.

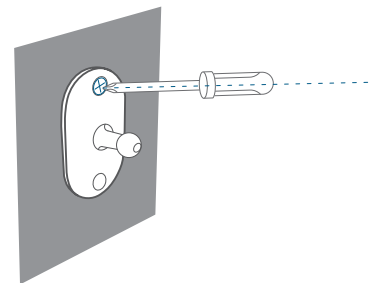


- Use the provided screws:

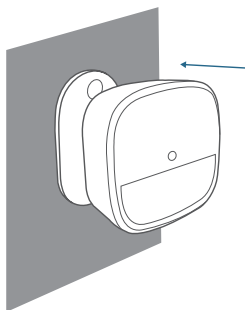
- ① Place the mount against the wall and use a pencil to mark the desired location for mounting.



- ② Drill holes at each marking. No need to drill a pilot hole in the wooden walls.
- ③ Insert anchors into the holes, and fix the mount onto the wall with the provided screws. No anchors are needed on wooden walls.



- ④ Clip the motion sensor back onto the mount.
- ⑤ Rotate the motion sensor to adjust the detection coverage.



Use the Motion Sensor

After the motion sensor is installed, the alarm will be triggered once movement is detected within the motion sensor's coverage area.

When the motion sensor is working, its LED indicator shows as below:

LED Status	Description
Blinking blue	Movement detected while the HomeBase is connected
Blinking red	Movement detected while the HomeBase is not connected

When the motion sensor is in the test mode, the LED indicator shows as below:

LED Status	Description
Solid red	Enter the test mode successfully
Blinking red for 1 second	Movement detected when the motion sensor is in the test mode
Off	Failed to enter the test mode

Replace the Battery

When the motion sensor's battery is low, the LED indicator shows as below. You should replace the battery to keep the motion sensor working.

LED Status	Description
Blinking blue	Movement detected while the HomeBase is connected
Blinking red	Movement detected while the HomeBase is not connected

SPECIFICATIONS

Battery: 1 × CR123A battery

Operating Temperature: -10°C - 40°C / 14°F - 104°F

Storage Temperature: -20°C - 60°C / -4°F - 140°F

NOTICE

FCC Statement

This device complies with Part 15 of the FCC Rules. Operation is subject to the following two conditions: (1) this device may not cause harmful interference, and (2) this device must accept any interference received, including interference that may cause undesired operation.

Warning: Changes or modifications not expressly approved by the party responsible for compliance could void the user's authority to operate the equipment.

Note: This equipment has been tested and found to comply with the limits for a Class B digital device, pursuant to Part 15 of the FCC Rules. These limits are designed to provide reasonable protection against harmful interference in a residential installation.

This equipment generates uses and can radiate radio frequency energy and, if not installed and used in accordance with the instructions, may cause harmful interference to radio communications. However, there is no guarantee that interference will not occur in a particular installation. If this equipment does cause harmful interference to radio or television reception, which can be determined by turning the equipment off and on, the user is encouraged to try to correct the interference by one or more of the following measures: (1) Reorient or relocate the receiving antenna. (2) Increase the separation between the equipment and receiver. (3) Connect the equipment into an outlet on a circuit different from that to which the receiver is connected. (4) Consult the dealer or an experienced radio/ TV technician for help.

FCC Radio Frequency Exposure Statement

The device has been evaluated to meet general RF exposure requirements. The device can be used in fixed / mobile exposure condition. The min separation distance is 20cm.

Notice: Shielded cables

All connections to other computing devices must be made using shielded cables to maintain compliance with FCC regulations.

The following importer is the responsible party.

Company Name: POWER MOBILE LIFE, LLC

Address: 400 108th Ave NE Ste 400, Bellevue, WA 98004-5541

Telephone: 1-800-988-7973



This product complies with the radio interference requirements of the European Community.

Declaration of Conformity

Hereby, Anker Innovations Limited declares that this device is in compliance with the essential requirements and other relevant provisions of Directive 2014/53/EU. For the declaration of conformity, visit www.eufylife.com.

Do not use the Device in the environment at too high or too low temperature, never expose the Device under strong sunshine or too wet environment.

The suitable temperature for the product and accessories is -10°C-40°C.

RF exposure information: The Maximum Permissible Exposure (MPE) level has been calculated based on a distance of d=20 cm between the device and the human body. To maintain compliance with RF exposure requirement, use product that maintain a 20cm distance between the device and the human body.

CAUTION RISK OF EXPLOSION IF BATTERY IS REPLACED BY AN INCORRECT TYPE. DISPOSE OF USED BATTERIES ACCORDING TO THE INSTRUCTIONS
SUB-1G Frequency range: 866~866.8MHz (for EU) ; 920~920.8MHz (for US)
Max Output Power: 6.496dBm (ERIP)



This product is designed and manufactured with high quality materials and components, which can be recycled and reused.



This symbol means the product must not be discarded as household waste, and should be delivered to an appropriate collection facility for recycling. Proper disposal and recycling helps protect natural resources, human health and the environment. For more information on disposal and recycling of this product, contact your local municipality, disposal service, or the shop where you bought this product.

IC Statement

This device complies with Industry Canada licence-exempt RSS standard(s). Operation is subject to the following two conditions:

- (1) this device may not cause interference, and
- (2) this device must accept any interference, including interference that may cause undesired operation of the device."

Le présent appareil est conforme aux CNR d'Industrie Canada applicables aux appareils radio exempts de licence. L'exploitation est autorisée aux deux conditions suivantes:

- (1) l'appareil ne doit pas produire de brouillage, et
- (2) l'utilisateur de l'appareil doit accepter tout brouillage radioélectrique subi, même si

le brouillage est susceptible d'en compromettre le fonctionnement."

This Class B digital apparatus complies with Canadian ICES-003.

Cet appareil numérique de la classe B est conforme à la norme NMB-003 du Canada.

IC RF Statement

When using the product, maintain a distance of 20cm from the body to ensure compliance with RF exposure requirements.

Lors de l'utilisation du produit, maintenez une distance de 20 cm du corps afin de vous conformer aux exigences en matière d'exposition RF.

FCC ID: 2AOKB-T8910 IC: 23451-T8910

Anker Innovations Limited

Room 1318-19, Hollywood Plaza, 610 Nathan Road, Mongkok, Kowloon, Hong Kong

CUSTOMER SERVICE

Warranty



12-month limited warranty

+1 (800) 988 7973 Mon-Fri 9AM-5PM (PT)



+44 (0) 1604 936 200 Mon-Fri 6AM-11AM (GMT)

+49 (0) 69 9579 7960 Mon-Fri 6:00-11:00



Customer Support: support@eufylife.com



@EufyOfficial



@EufyOfficial



eufyofficial