

SPECIFICATION

SHEET FOR APPROVAL

(Revision: R: A1)

CUSTOMER(客户名称)	Anker
CS P/N(客户机种)	T8506
PART NAME(品名)	WIFI Antenna+BT Antenna
Antenna Type(天线类型)	FPC+CABLE
FREQUENCY(频率)	2.4-2.5GHz
ANTENNA MANUFACTURER (天线制造商)	Shenzhen ZTX Communication Technology Co., Ltd
ZTX NO.(物料编号)	2.00006176
DATE(日期)	2023-06-16

CUSTOMER			
QA CHECKED	ME CHECKED	RF CHECKED	MANAGER CHECKED

Remark(备注): _____

Sign(客户确认签字盖章):

MANAGER CHECKED	MANAGER CHECKED	ME CHECKED	RF CHECKED	LISTER



Shenzhen ZTX Communication Technology Co., Ltd

Address: No.34, Shilong Avenue, Shiyan Town, Baoan District, Shenzhen City (Tengda Industrial Park)
Postcode: 518000 Tel: 0755-27588320 Fax: 0755-27588045 <http://www.chinaztx.com>

ANTENNA SPECIFICATION

CUS P/N :T8506 WIFI Antenna
ZTX P/N : T8506 WIFI Antenna

ApplicationDate:Jun,16,2023
Editor:

Rev: R:A0
Page 1 of 9

Revision history

NO	Date	
		The first edition
A1	2023-06-16	Alpha release

ANTENNA SPECIFICATION

CUS P/N : T8506 WIFI Antenna
ZTX P/N : T8506 WIFI Antenna

ApplicationDate:Jun,16,2023
Editor:

Rev: R:A0
Page 2 of 9

Index

		Revision history	1
		Index	2
1		Mechanical Specification	3
	1-1	Mechanical Specification (T8506 WIFI Antenna)	3
	1-2	Mechanical Specification (T8506 BT Antenna)	4
2		Test equipment	5
3		Test Results Summary	6
	3-1	Passive Test	6
	3-2	Matching circuit	6
	3-3	VSWR&Return loss plot&Smith Chart	6
	3-4	2D/3D Radiation Pattern Results	7
4		Test Results Summary (BT)	
	4-1	Passive Test	8
	4-2	Matching circuit	8
	4-3	VSWR&Return loss plot&Smith Chart	8
	4-4	2D/3D Radiation Pattern Results	9

ANTENNA SPECIFICATION

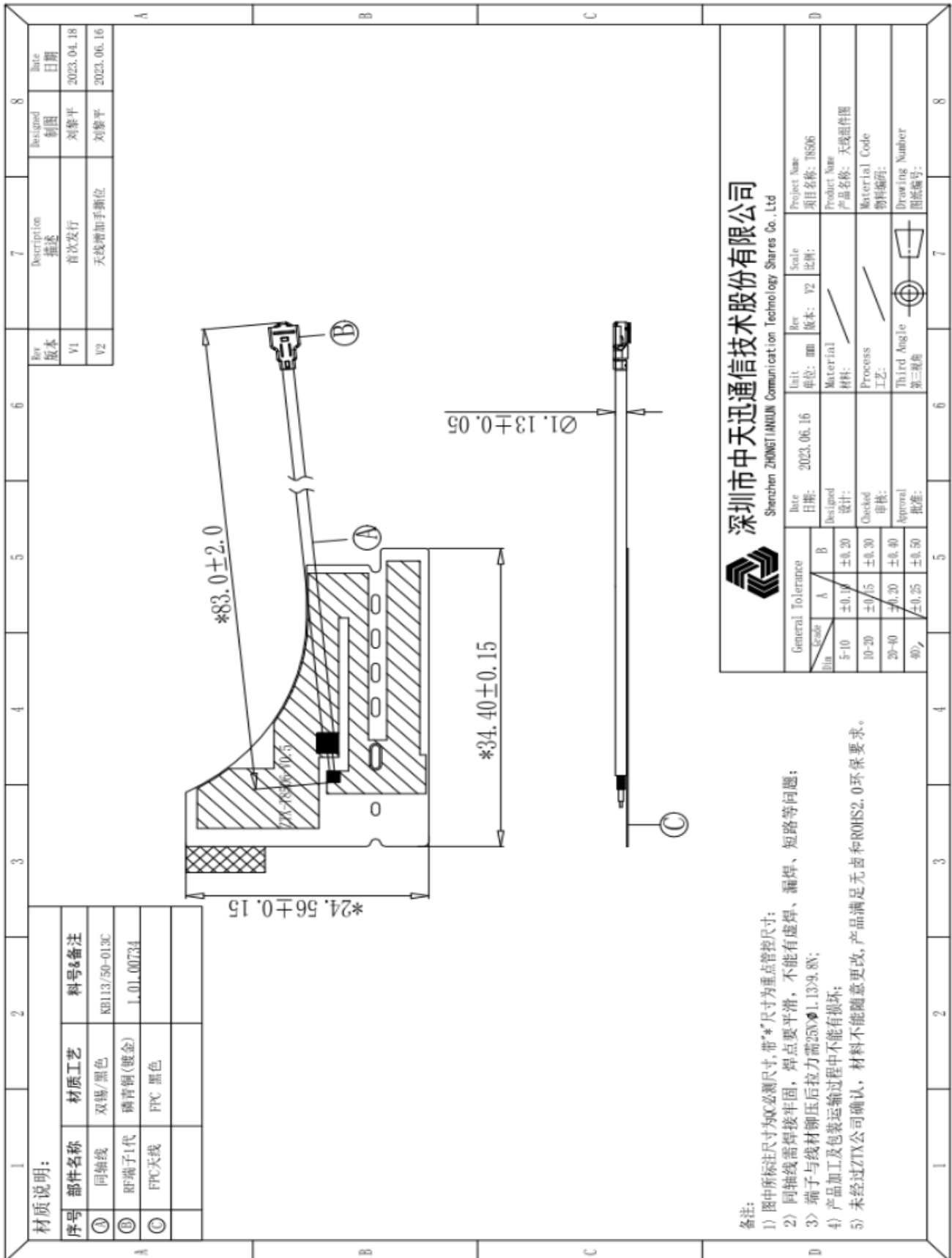
CUS P/N : T8506 WIFI Antenna
ZTX P/N : T8506 WIFI Antenna

ApplicationDate:Jun,16,2023
Editor:

Rev: R:A0
Page 3 of 9

1. Mechanical Specification

1-1Mechanical Configuration (T8506 WIFI Antenna)



ANTENNA SPECIFICATION

CUS P/N : T8506 WIFI Antenna

ApplicationDate:Jun,16,2023

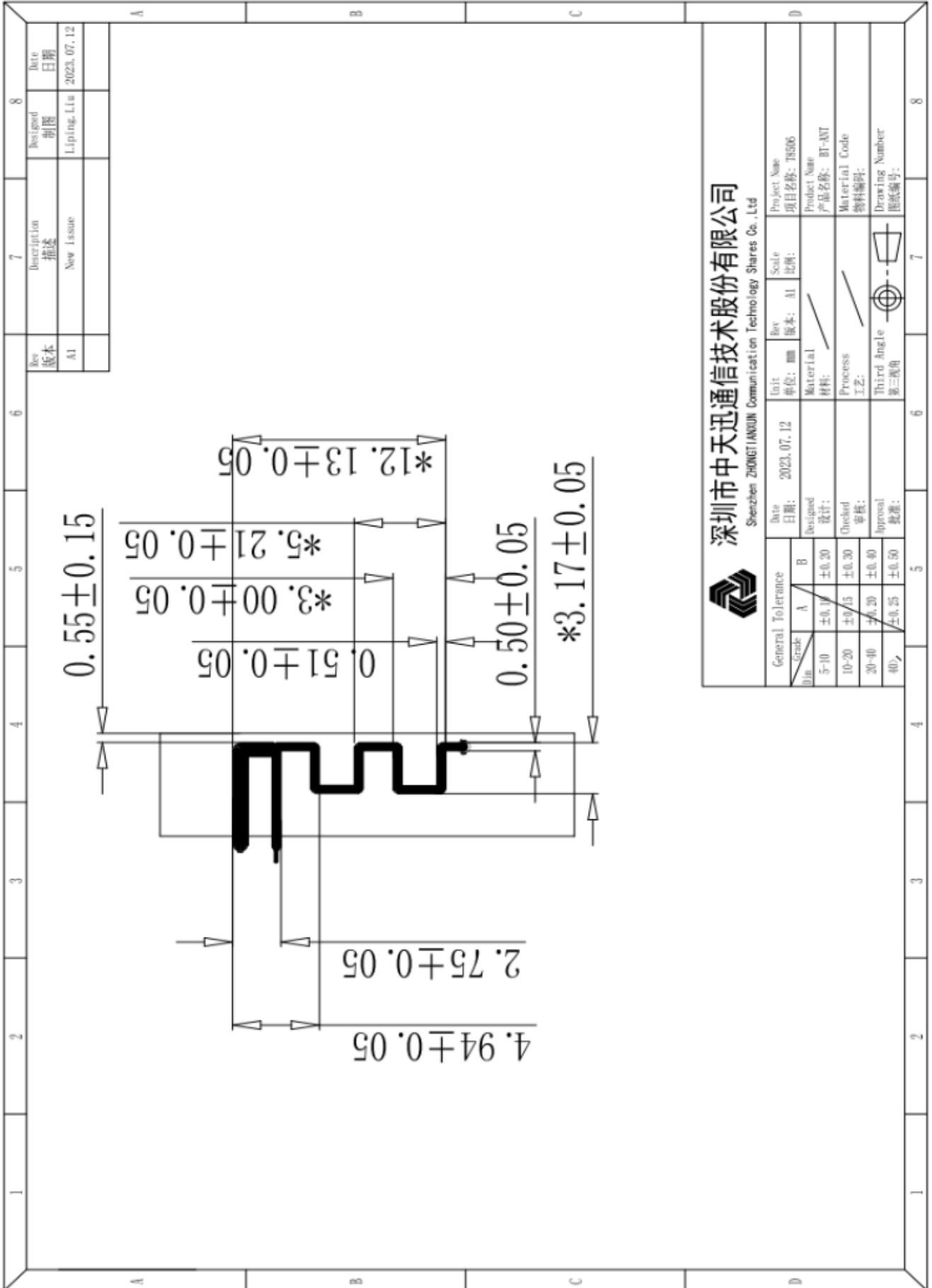
Rev: R:A0

ZTX P/N : T8506 WIFI Antenna

Editor:

Page 4 of 9

1-2Mechanical Configuration (T8506 BT Antenna)



深圳市中天迅通信科技股份有限公司
Shenzhen ZHONGTIANXUN Communication Technology Shares Co., Ltd

ANTENNA SPECIFICATION

CUS P/N : T8506 WIFI Antenna

ApplicationDate:Jun,16,2023

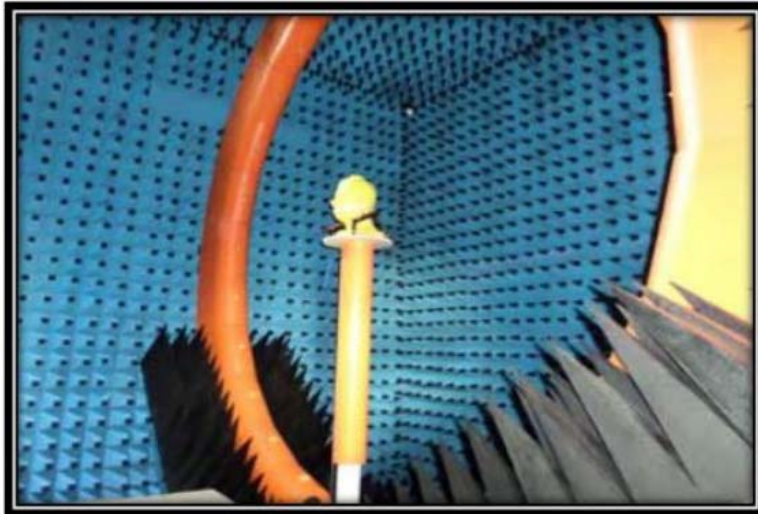
Rev: R:A0

ZTX P/N : T8506 WIFI Antenna

Editor:

Page 5 of 9

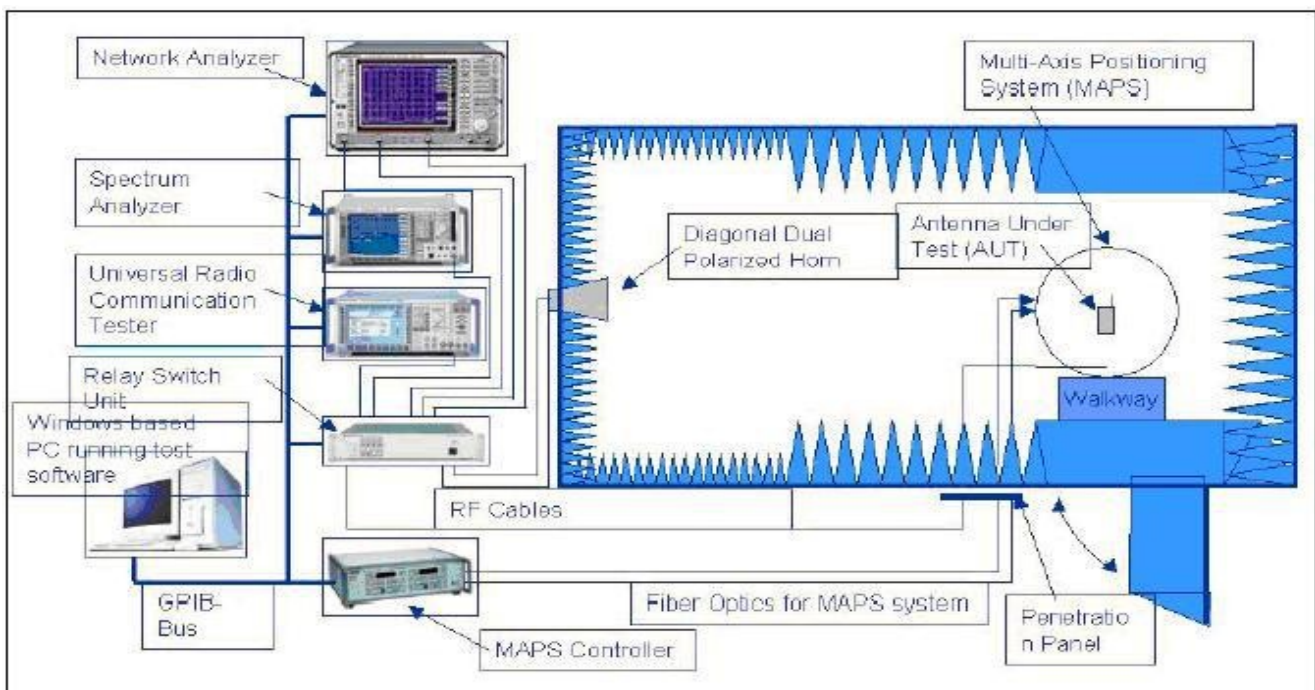
2.Test equipment



Owned 6 microwave dark room, equipped 2 sets world leading France Satimo SG24 OTA certification test systems (one in SHENZHEN, another one in Shanghai), ETS OTA Standard test system, Blue test reverberation test system which is High repeatability, high accuracy and high resolution. It can quickly provide accurate test reports, fully meet the CTIA standards.

Testing range:

Support active, passive testing of GSM/CDMA/WCDMA/TD-SCDMA/LTE/WIFI/WLAN/WiMax/BT/GPS/MIMO/UWB within 0.4-6G.



ANTENNA SPECIFICATION

CUS P/N : T8506 WIFI Antenna
ZTX P/N : T8506 WIFI Antenna

ApplicationDate:Jun,16,2023
Editor:

Rev: R:A0
Page 6 of 9

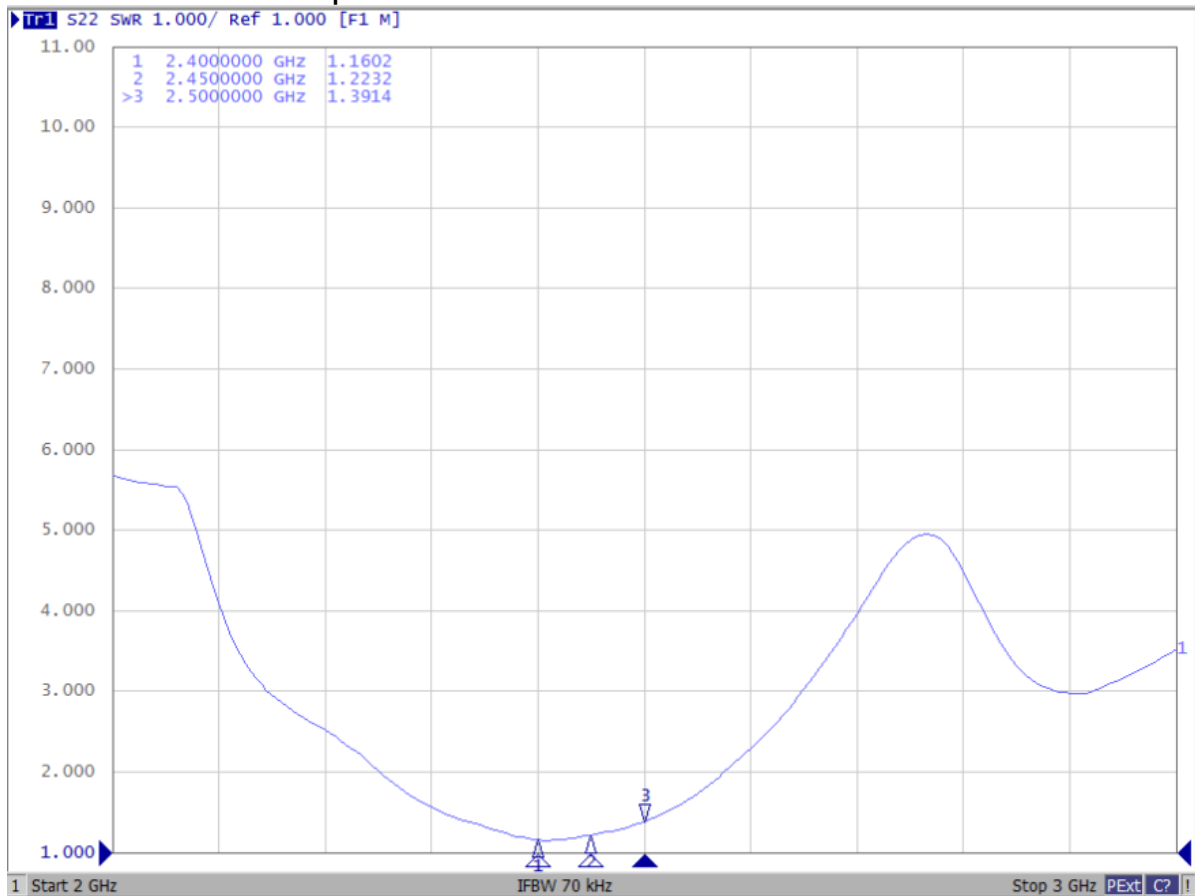
3.Test Results Summary

3-1 Passive Test

Frequency	Efficiency	Efficiency. dB	Gain. dB
2.40E+09	55%	-2.6	3.4
2.41E+09	54%	-2.7	3.3
2.42E+09	58%	-2.4	3.4
2.43E+09	59%	-2.3	3.4
2.44E+09	60%	-2.3	3.4
2.45E+09	61%	-2.2	3.4
2.46E+09	58%	-2.4	3.5
2.47E+09	60%	-2.2	3.4
2.48E+09	59%	-2.3	3.3
2.49E+09	61%	-2.1	3.2
2.50E+09	58%	-2.4	3.4

3-2 Matching circuit N/A

3-3 VSWR&Return loss plot&Smith Chart



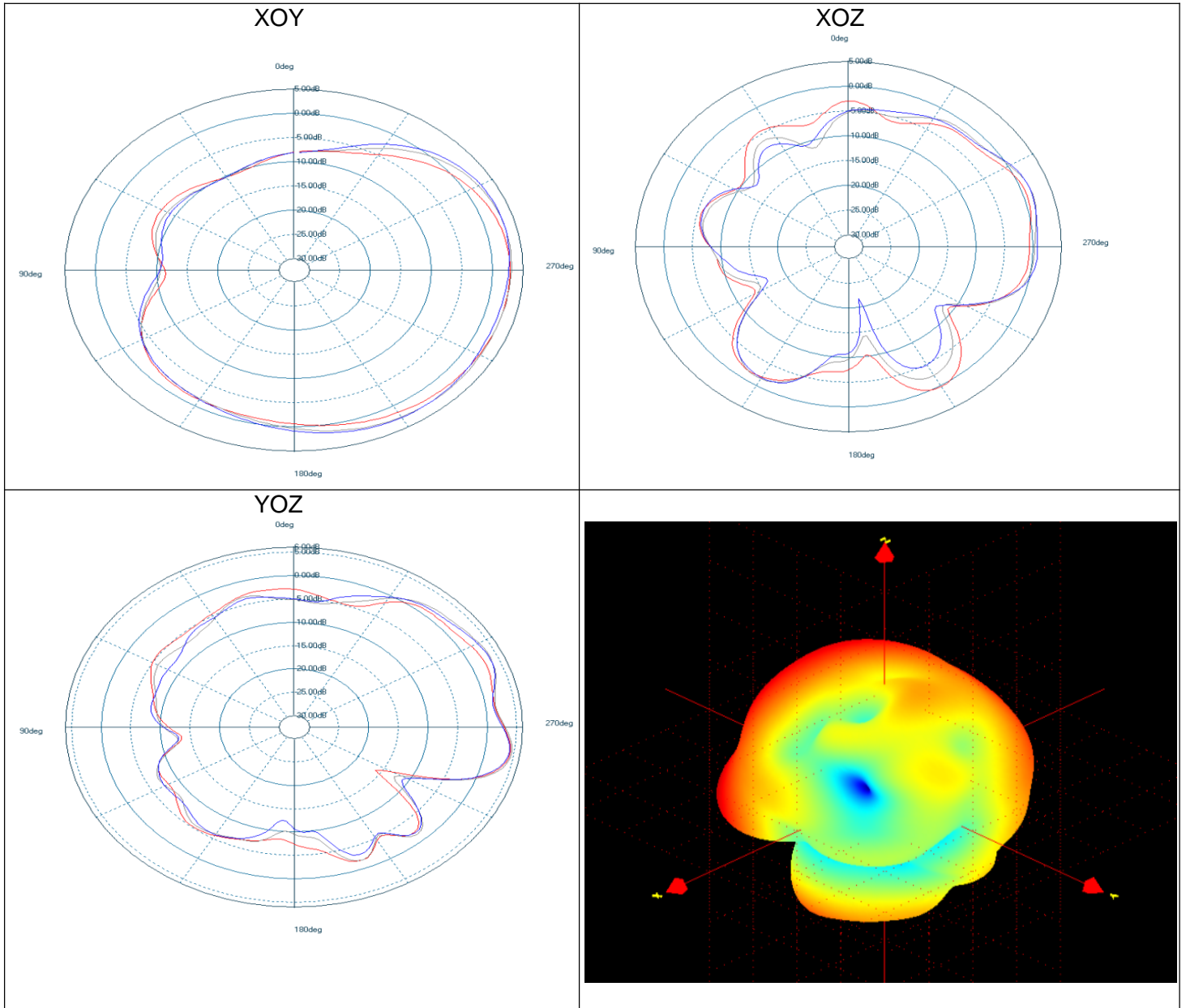
ANTENNA SPECIFICATION

CUS P/N : T8506 WIFI Antenna
ZTX P/N : T8506 WIFI Antenna

ApplicationDate:Jun,16,2023
Editor:

Rev: R:A0
Page 7 of 9

3-4 2D/3D Radiation Pattern Results



ANTENNA SPECIFICATION

CUS P/N : T8506 WIFI Antenna
ZTX P/N : T8506 WIFI Antenna

ApplicationDate:Jun,16,2023
Editor:

Rev: R:A0
Page 8 of 9

4.Test Results Summary (BT)

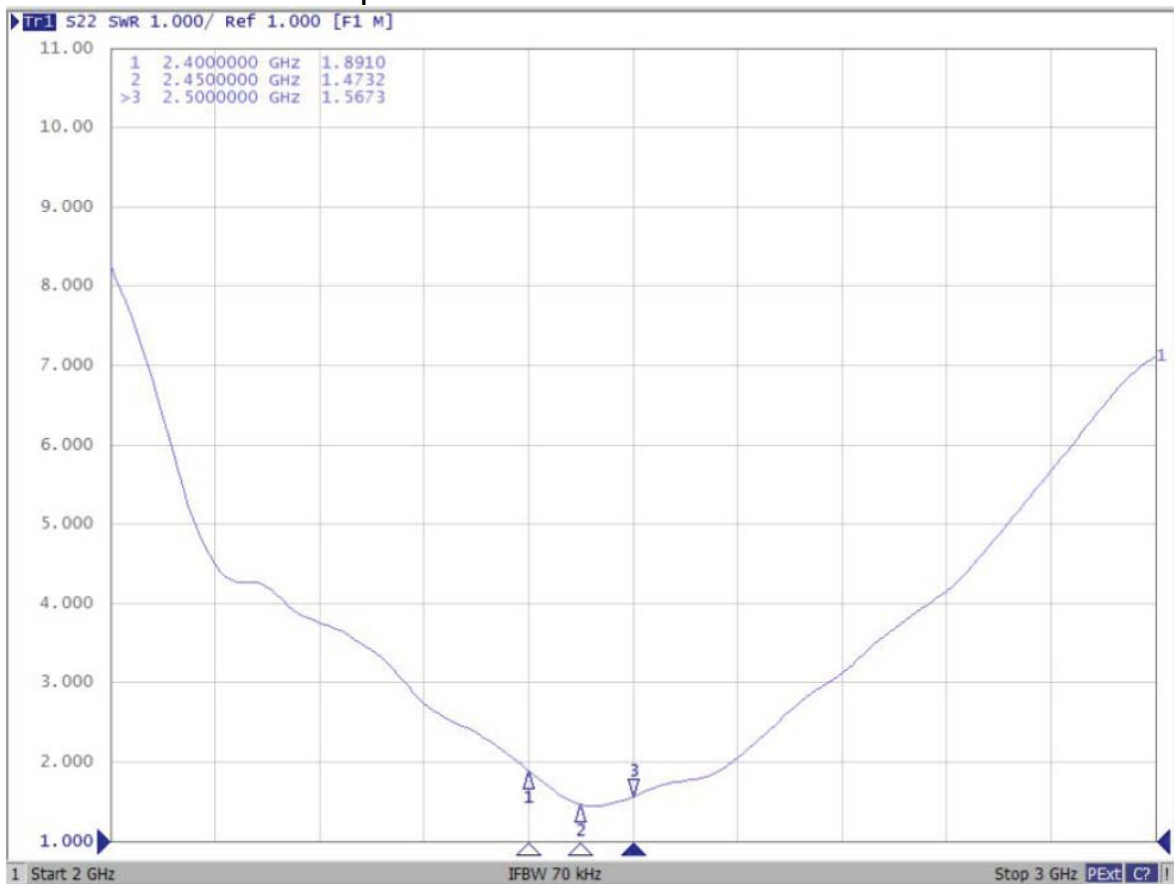
4-1 Passive Test

Frequency	Efficiency	Efficiency. dB	Gain. dB
2.40E+09	50%	-3.0	3.4
2.41E+09	51%	-2.9	3.2
2.42E+09	52%	-2.9	3.2
2.43E+09	51%	-2.9	3.3
2.44E+09	50%	-3.0	3.2
2.45E+09	52%	-2.8	3.1
2.46E+09	52%	-2.8	3.4
2.47E+09	51%	-2.9	3.5
2.48E+09	50%	-3.0	3.4
2.49E+09	51%	-3.0	3.7
2.50E+09	50%	-3.0	3.6

4-2 Matching circuit

N/A

4-3 VSWR&Return loss plot&Smith Chart



ANTENNA SPECIFICATION

CUS P/N : T8506 WIFI Antenna

ApplicationDate:Jun,16,2023

Rev: R:A0

ZTX P/N : T8506 WIFI Antenna

Editor:

Page 9 of 9

4-4 2D/3D Radiation Pattern Results

