

## Appendix Test Data

Report No.:	18220WC10275201	Test Sample No.:	1-2-2
Start Test Date:	2021.12.14	Finish Test Date:	2021.12.23
Test Engineer:	<i>Jony He</i>	Auditor:	<i>Edward Pan</i>
Temperature:	24.3°C	Relative Humidity:	57 %
Pressure:	1012 hPa		

## Appendix A: DTS Bandwidth

## Test Result

TestMode	Antenna	Channel	DTS BW [MHz]	FL[MHz]	FH[MHz]	Limit[MHz]	Verdict
BLE_1M	Ant1	2402	0.508	2401.652	2402.160	≥0.5	PASS
		2440	0.560	2439.656	2440.216	≥0.5	PASS
		2480	0.556	2479.660	2480.216	≥0.5	PASS

## Test Graphs





## Shenzhen Anbotek Compliance Laboratory Limited

Address: 1/F., Building D, Sogood Science and Technology Park, Sanwei Community, Hangcheng Street, Bao'an District, Shenzhen, Guangdong, China.

Tel: (86) 755-26066440 Fax: (86) 755-26014772 Email: service@anbotek.com

Hotline  
400-003-0500  
www.anbotek.com

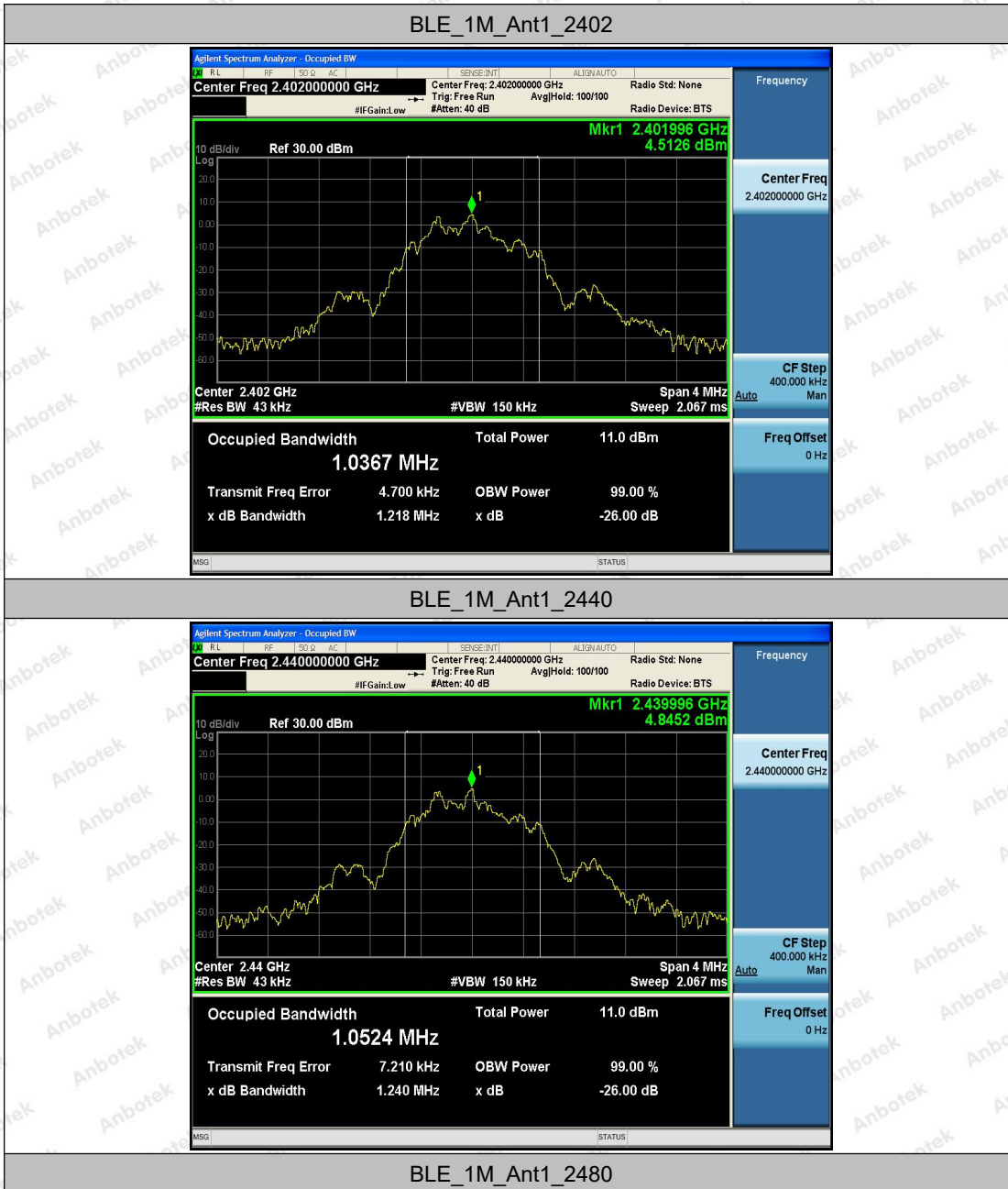


## Appendix B: Occupied Channel Bandwidth

### Test Result

TestMode	Antenna	Channel	OCB [MHz]	FL[MHz]	FH[MHz]	Limit[MHz]	Verdict
BLE_1M	Ant1	2402	1.0367	2401.486	2402.523	---	PASS
		2440	1.0524	2439.481	2440.533	---	PASS
		2480	1.0499	2479.480	2480.530	---	PASS

## Test Graphs





## Shenzhen Anbotek Compliance Laboratory Limited

Address: 1/F., Building D, Sogood Science and Technology Park, Sanwei Community, Hangcheng Street, Bao'an District, Shenzhen, Guangdong, China.  
Tel: (86) 755-26066440 Fax: (86) 755-26014772 Email: service@anbotek.com

Hotline  
400-003-0500  
www.anbotek.com



## Appendix C: Maximum conducted output power

### Test Result

TestMode	Antenna	Channel	Result[dBm]	Limit[dBm]	Verdict
BLE_1M	Ant1	2402	5.23	≤30	PASS
		2440	5.57	≤30	PASS
		2480	5.98	≤30	PASS

## Test Graphs



### Shenzhen Anbotek Compliance Laboratory Limited

Address: 1/F., Building D, Sogood Science and Technology Park, Sanwei Community, Hangcheng Street, Bao'an District, Shenzhen, Guangdong, China.  
 Tel: (86) 755-26066440 Fax: (86) 755-26014772 Email: service@anbotek.com

Hotline  
 400-003-0500  
 www.anbotek.com





## Shenzhen Anbotek Compliance Laboratory Limited

Address: 1/F., Building D, Sogood Science and Technology Park, Sanwei Community, Hangcheng Street, Bao'an District, Shenzhen, Guangdong, China.  
Tel: (86) 755-26066440 Fax: (86) 755-26014772 Email: service@anbotek.com

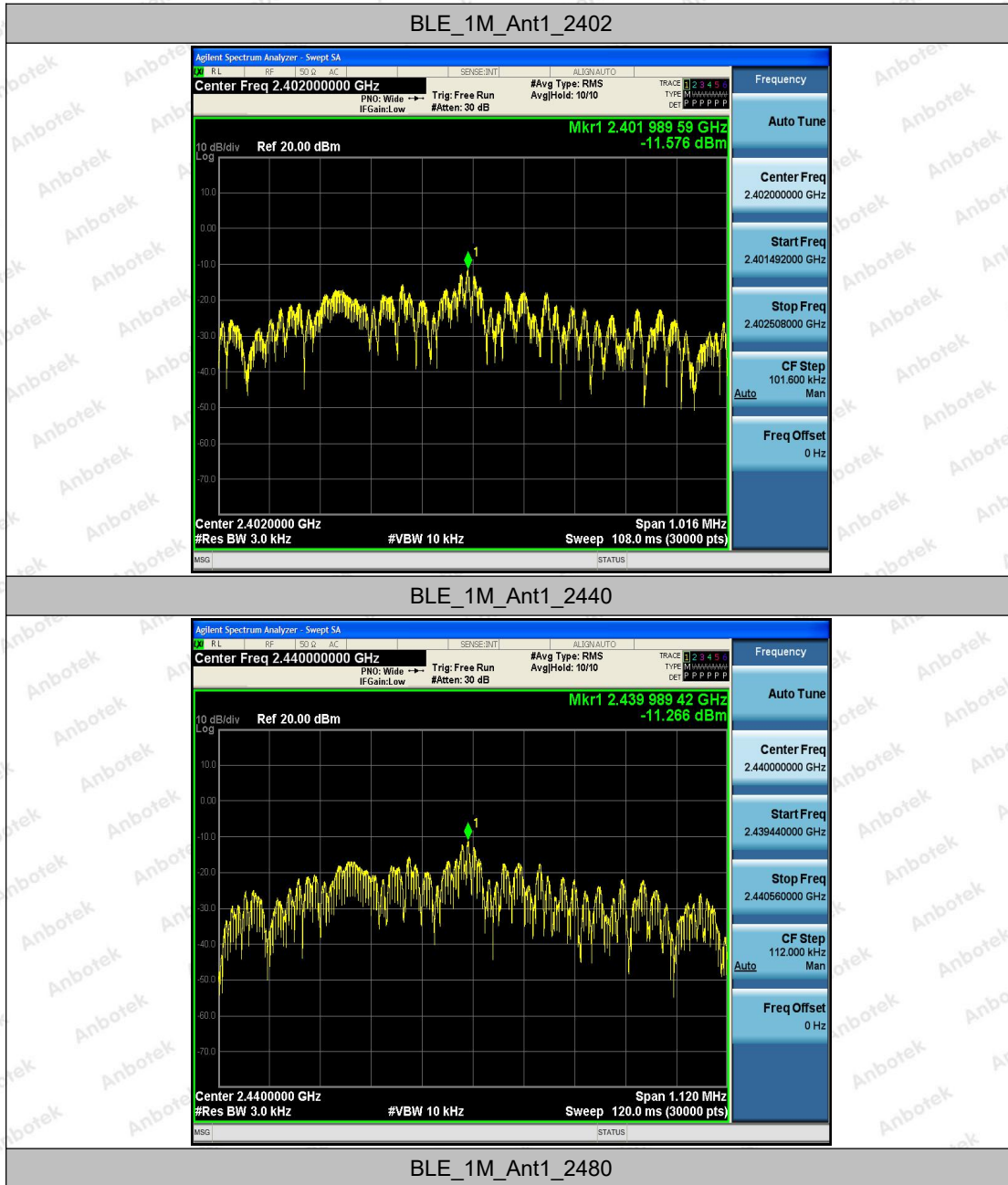
Hotline  
400-003-0500  
www.anbotek.com

## Appendix D: Maximum power spectral density

### Test Result

TestMode	Antenna	Channel	Result[dBm/3kHz]	Limit[dBm/3kHz]	Verdict
BLE_1M	Ant1	2402	-11.58	≤8	PASS
		2440	-11.27	≤8	PASS
		2480	-10.83	≤8	PASS

## Test Graphs



### Shenzhen Anbotek Compliance Laboratory Limited

Address: 1/F., Building D, Sogood Science and Technology Park, Sanwei Community, Hangcheng Street, Bao'an District, Shenzhen, Guangdong, China.

Tel: (86) 755-26066440 Fax: (86) 755-26014772 Email: service@anbotek.com

Hotline  
 400-003-0500  
 www.anbotek.com





## Shenzhen Anbotek Compliance Laboratory Limited

Address: 1/F., Building D, Sogood Science and Technology Park, Sanwei Community, Hangcheng Street, Bao'an District, Shenzhen, Guangdong, China.

Tel: (86) 755-26066440 Fax: (86) 755-26014772 Email: service@anbotek.com

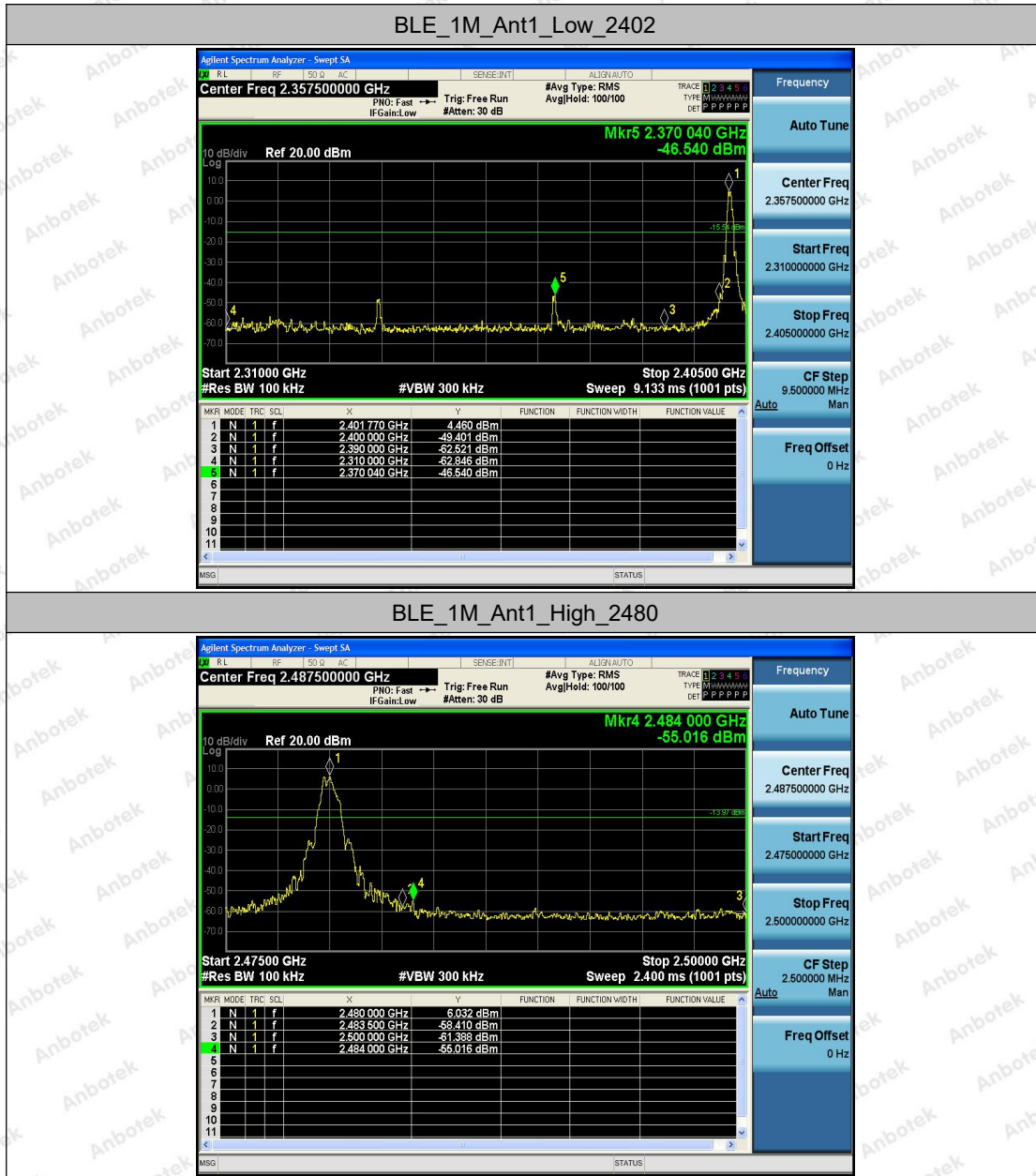
Hotline  
400-003-0500  
www.anbotek.com

## Appendix E: Band edge measurements

### Test Result

TestMode	Antenna	ChName	Channel	RefLevel[dBm]	Result[dBm]	Limit[dBm]	Verdict
BLE_1M	Ant1	Low	2402	4.46	-46.54	≤-15.54	PASS
		High	2480	6.03	-55.02	≤-13.97	PASS

## Test Graphs



### Shenzhen Anbotek Compliance Laboratory Limited

Address: 1/F., Building D, Sogood Science and Technology Park, Sanwei Community, Hangcheng Street, Bao'an District, Shenzhen, Guangdong, China.  
 Tel: (86) 755-26066440 Fax: (86) 755-26014772 Email: service@anbotek.com

Hotline  
 400-003-0500  
 www.anbotek.com



## Appendix F: Conducted Spurious Emission

### Test Result

TestMode	Antenna	Channel	FreqRange [MHz]	RefLevel [dBm]	Result[dBm]	Limit[dBm]	Verdict
BLE_1M	Ant1	2402	Reference	5.13	5.13	---	PASS
			30~1000	5.13	-62.11	≤-14.87	PASS
			1000~265 00	5.13	-39.21	≤-14.87	PASS
		2440	Reference	5.48	5.48	---	PASS
			30~1000	5.48	-62.03	≤-14.52	PASS
			1000~265 00	5.48	-36.51	≤-14.52	PASS
		2480	Reference	5.88	5.88	---	PASS
			30~1000	5.88	-62.32	≤-14.12	PASS
			1000~265 00	5.88	-39.71	≤-14.12	PASS

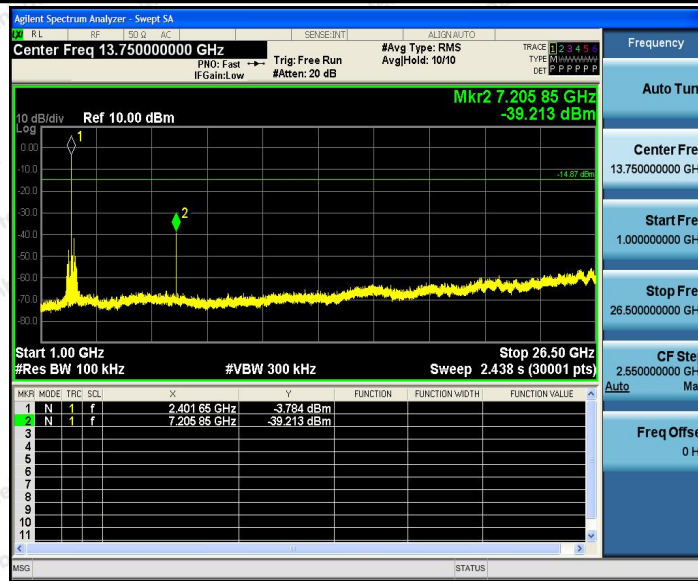
## Test Graphs



### Shenzhen Anbotek Compliance Laboratory Limited

Address: 1/F., Building D, Sogood Science and Technology Park, Sanwei Community, Hangcheng Street, Bao'an District, Shenzhen, Guangdong, China.  
 Tel: (86) 755-26066440 Fax: (86) 755-26014772 Email: service@anbotek.com

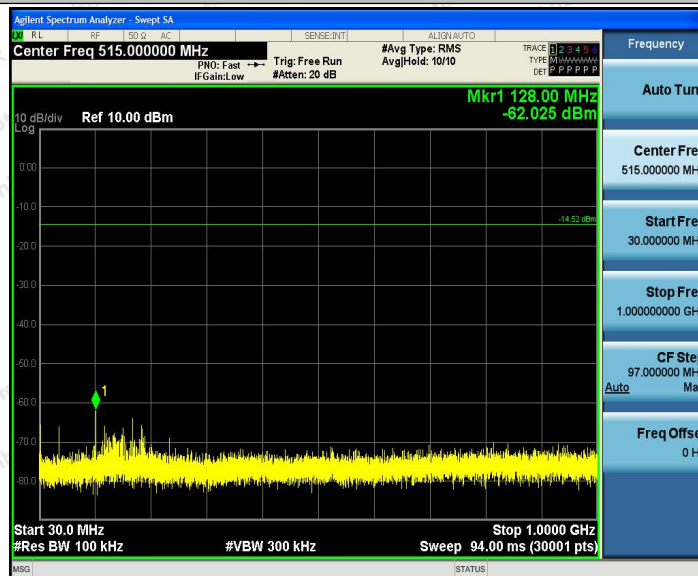
Hotline  
 400-003-0500  
 www.anbotek.com



BLE\_1M\_Ant1\_2440\_0~Reference



BLE\_1M\_Ant1\_2440\_30~1000



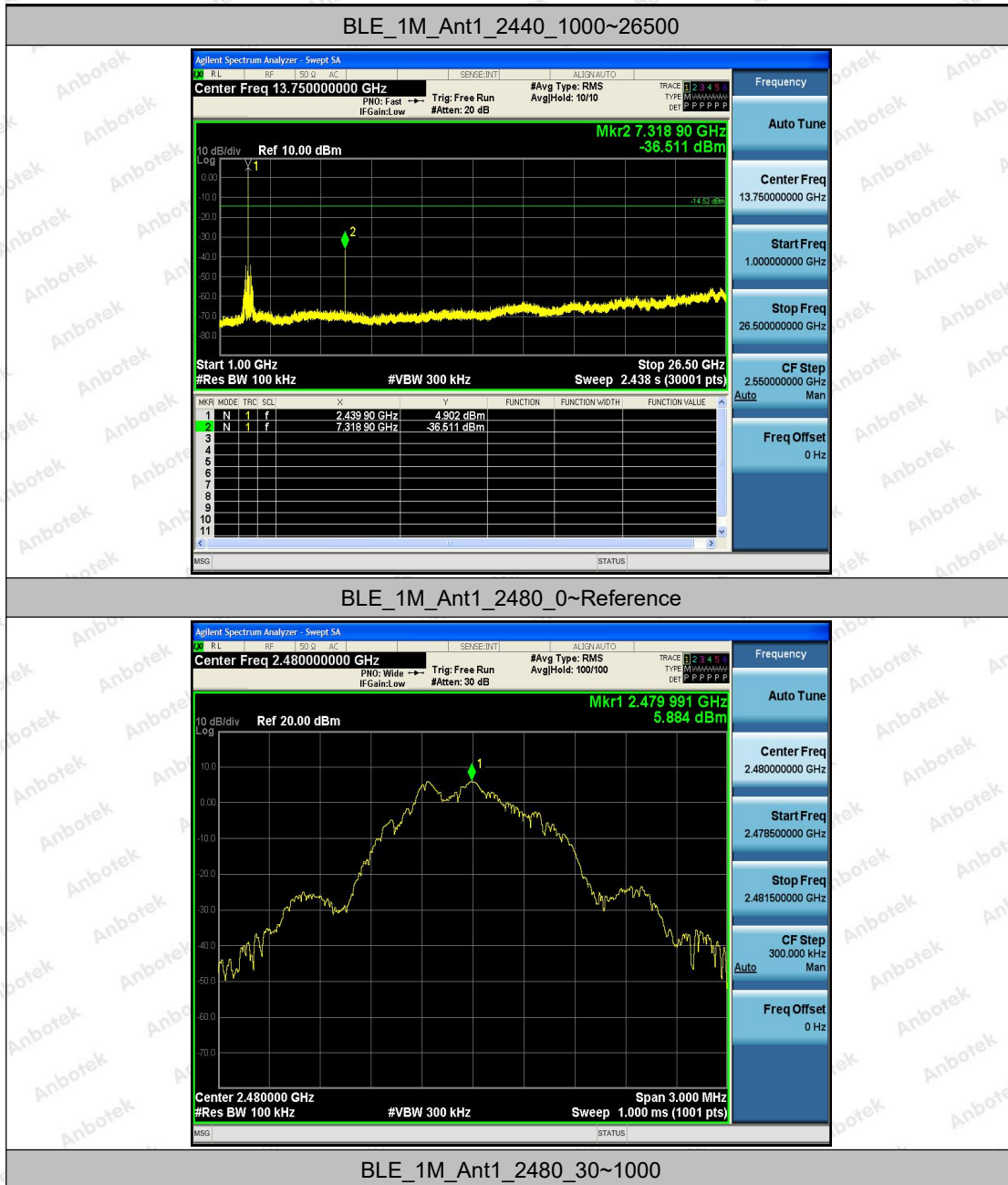
## Shenzhen Anbotek Compliance Laboratory Limited

Address: 1/F., Building D, Sogood Science and Technology Park, Sanwei Community, Hangcheng Street, Bao'an District, Shenzhen, Guangdong, China.

Tel: (86) 755-26066440 Fax: (86) 755-26014772 Email: service@anbotek.com

Hotline  
400-003-0500  
www.anbotek.com



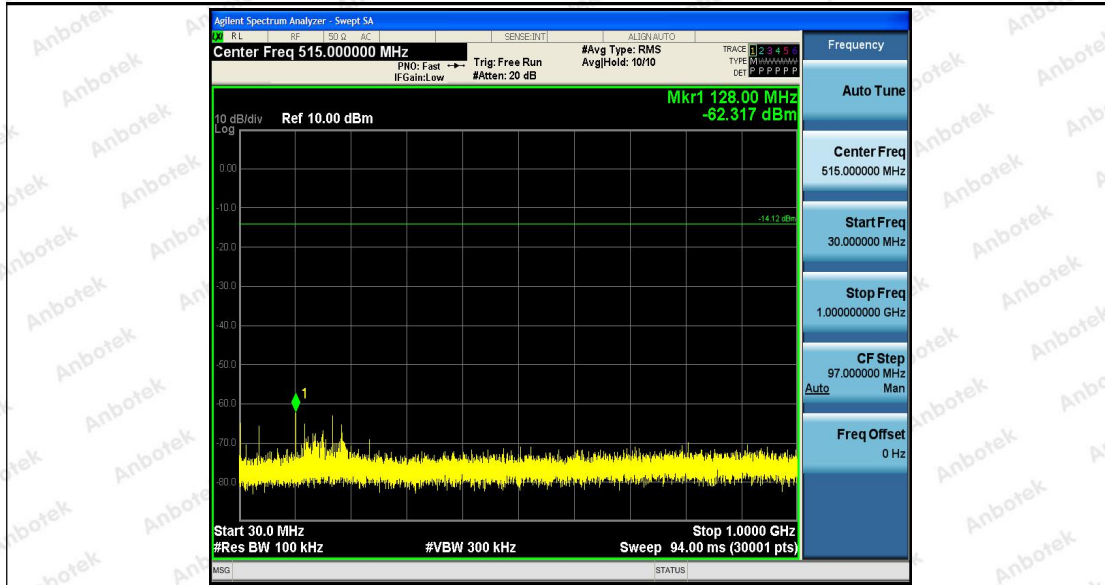


### Shenzhen Anbotek Compliance Laboratory Limited

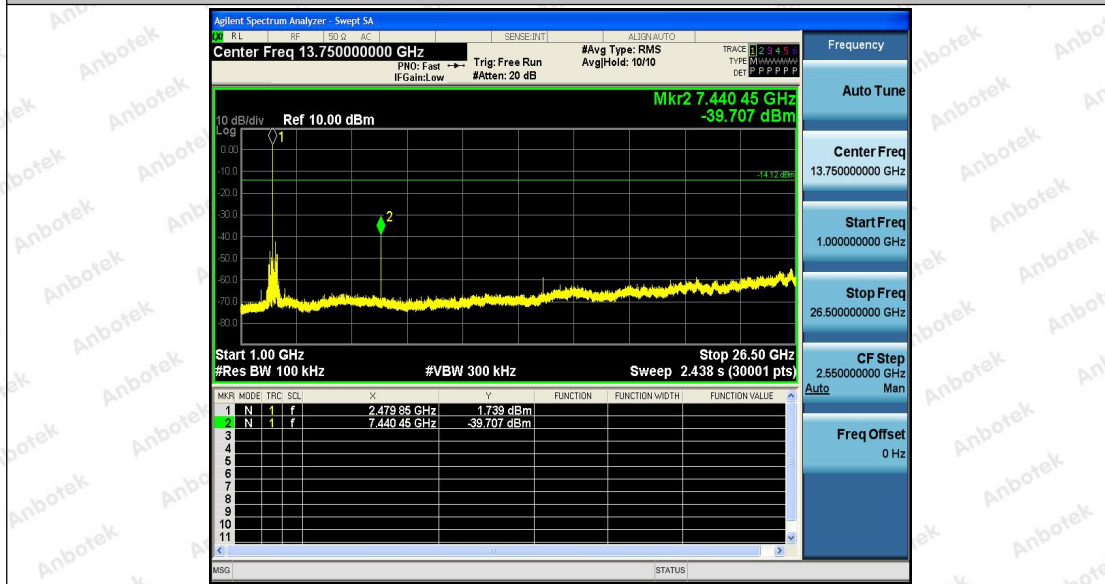
Address: 1/F., Building D, Sogood Science and Technology Park, Sanwei Community, Hangcheng Street, Bao'an District, Shenzhen, Guangdong, China.

Tel: (86) 755-26066440 Fax: (86) 755-26014772 Email: service@anbotek.com

Hotline  
 400-003-0500  
 www.anbotek.com



BLE\_1M\_Ant1\_2480\_1000~26500



## Shenzhen Anbotek Compliance Laboratory Limited

Address: 1/F., Building D, Sogood Science and Technology Park, Sanwei Community, Hangcheng Street, Bao'an District, Shenzhen, Guangdong, China.  
Tel: (86) 755-26066440 Fax: (86) 755-26014772 Email: service@anbotek.com

Hotline  
400-003-0500  
www.anbotek.com

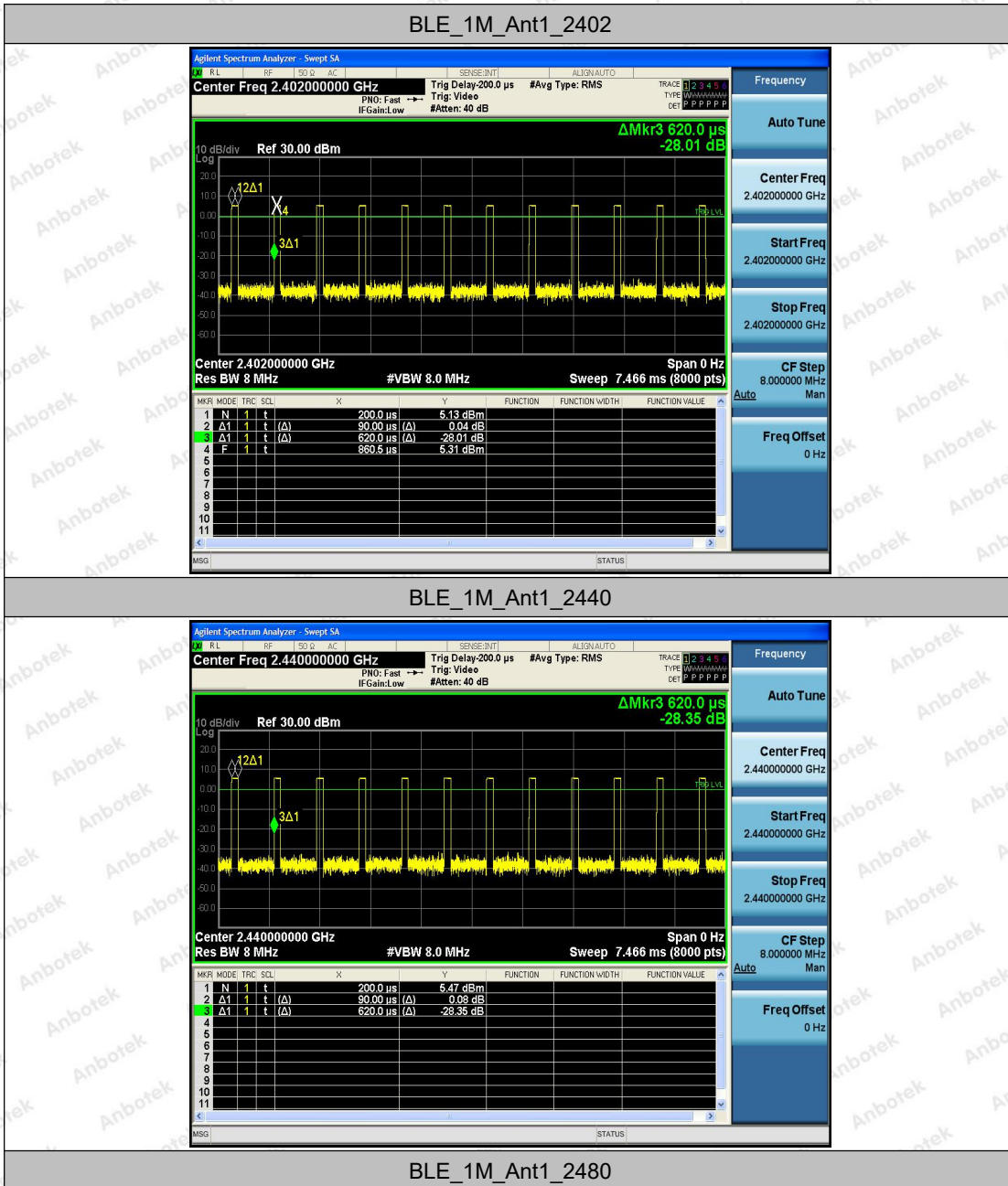
## Appendix G: Duty Cycle

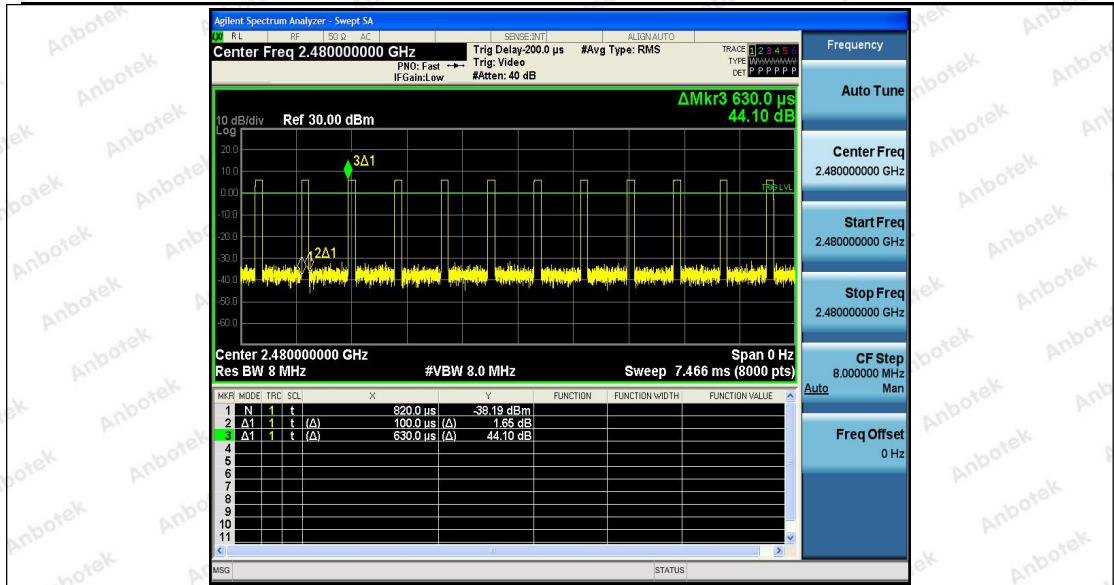
### Test Result

TestMode	Antenna	Channel	ON Time [ms]	Period [ms]	X	DC [%]	xFactor	Limit	Verdict
BLE_1M	Ant1	2402	0.09	0.62	0.145 2	14.52	8.38	---	PASS
		2440	0.09	0.62	0.145 2	14.52	8.38	---	PASS
		2480	0.10	0.63	0.158 7	15.87	7.99	---	PASS



## Test Graphs





---End---