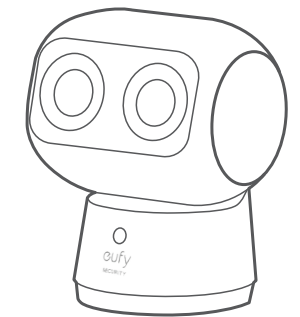




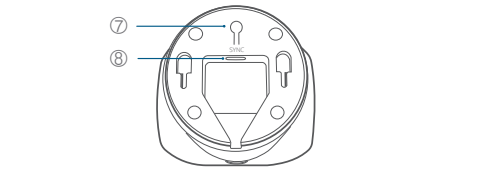
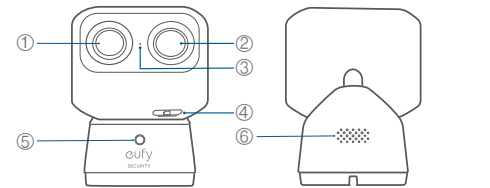
SECURITY

QUICK START GUIDE

S350 Indoor Cam



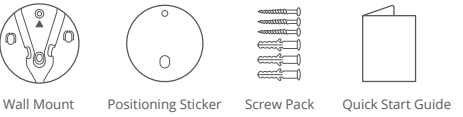
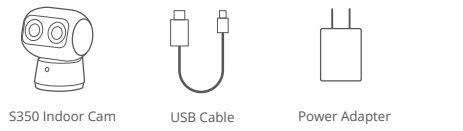
PRODUCT OVERVIEW



- ① Wide-Angle Lens
- ② Telephoto Lens
- ③ Microphone
- ④ microSD Slot
Insert a microSD card*
(not included) to store recordings
- ⑤ Status LED
- ⑥ Speaker
- ⑦ SYNC Button
- ⑧ Power Input

*Use at least a Class 10 microSD card with a maximum of 128 GB.

WHAT'S INCLUDED



You may need a screwdriver, drill, and ladder.

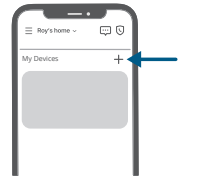
SET UP

1. Download and install the eufy Security app, and sign up for an account.



2. Connect the camera to a power source and wait until the status LED turns solid blue.

3. Tap + in the app and follow the in-app instructions to add your camera.



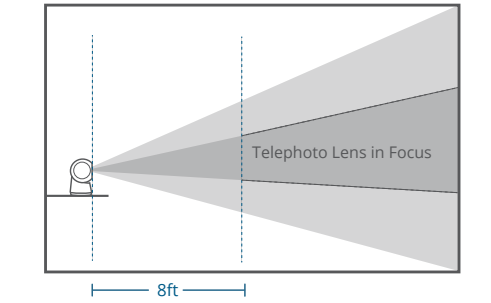
LED INDICATORS

	Solid Violet	System is initializing
	Solid Blue	Working normally or ready for setup
	Blinking Red	Not connected to the internet
	Solid Red	Recording or the live stream is being viewed
	Flashing Blue and Red	Firmware upgrade in progress <i>Note: Keep the camera connected to a power source</i>

INSTALL YOUR CAMERA

Telephoto Lens Focusing Distance

To ensure an optimal zoom experience from the telephoto lens, place the camera at least 8 ft (2.5 m) away from the area to be monitored.



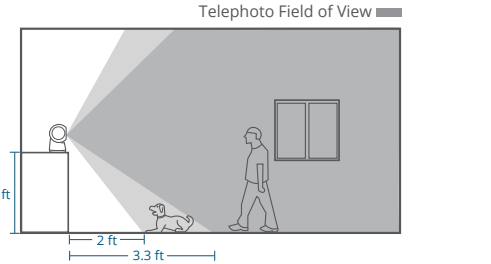
Choose a Location

The camera can be placed on a table or shelf, or can be installed on a wall or ceiling. Select a location and height that achieves your desired view and is within reach of a power outlet.

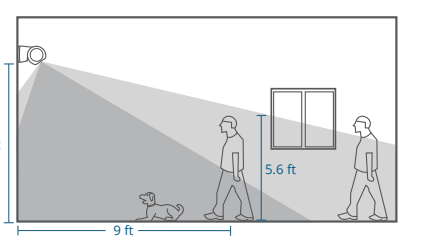
Note: Keep the camera at least 0.7ft/0.2m away from any objects or walls to avoid infrared reflection, which may impact night vision performance.

Camera Field of View

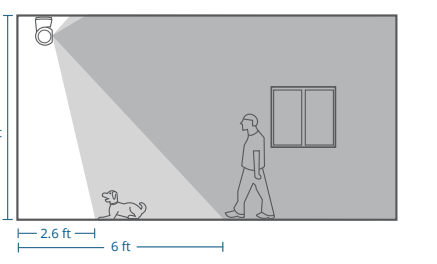
On a Table or Shelf



On the Wall

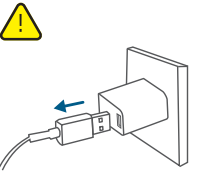


On the Ceiling

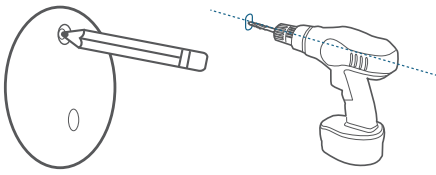


Install on a Wall or Ceiling

Note: Disconnect the camera from the power outlet before mounting.



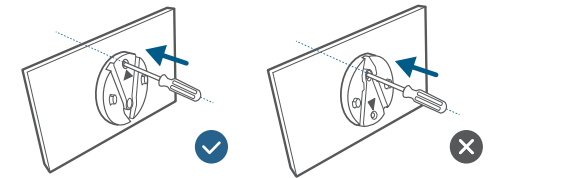
1. Mark the screw positions on the wall or ceiling with the positioning sticker and drill a pilot hole.



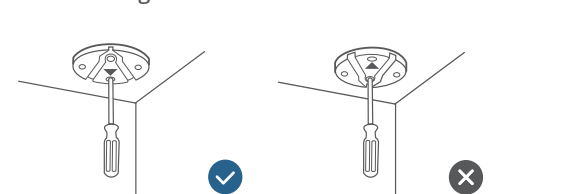


2. Hold the mounting plate on the wall and make sure the "UP" arrow is pointing up. Secure the mounting plate to the wall or ceiling with the screws.

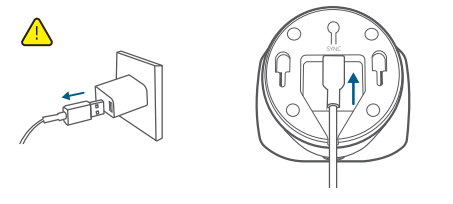
On the Wall



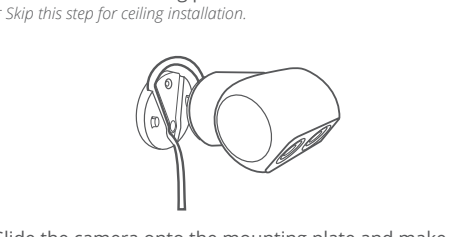
On the Ceiling



3. Keep the camera disconnected from power. Connect the USB-C Cable to the camera with the other end not connected to a power source.

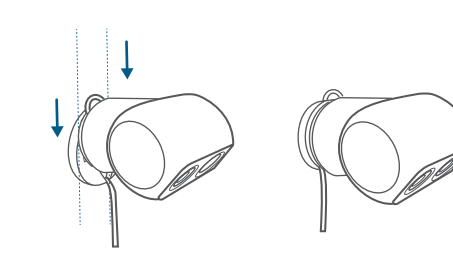


4. If mounting on a wall, place the cable into the cable channel of the mounting plate.
** Skip this step for ceiling installation.*

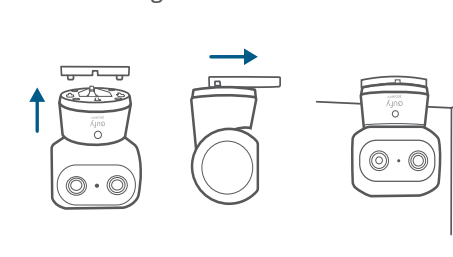


5. Slide the camera onto the mounting plate and make sure it is attached securely.

On the Wall



On the Ceiling



SAFETY

The recommended temperature range for devices and accessories is 0°C to 40°C (32°F to 104°F).

Unless specifically indicated that it is safe to do so in the user guide or instruction manual, do not use this device in an environment that exceeds the recommended low or high temperature. Unless specifically indicated that it is safe to do so in the user guide or instruction manual, avoid exposing your device to direct sunshine or excessively wet environments.

For pluggable equipment, the socket-outlet shall be easily accessible.

Use only the adapter provided by the manufacturer. Using unauthorized adapters may cause danger and violate the authorized use of the device or the warranty article.

CHILD SAFETY

- THIS DEVICE IS NOT A TOY.
- Choking Hazard: The product contains (or comes with) small parts, plastic elements, cables and parts that may cause choking hazard. Keep your camera and its accessories out of the reach of small children. Consult a physician immediately if small parts are swallowed.
- Strangulation Hazard: Children get strangled in cords. Keep cords out of the reach of children (more than 3ft/0.9m away).

NOTICE

FCC Statement

This device complies with Part 15 of the FCC Rules. Operation is subject to the following two conditions: (1) this device may not cause harmful interference, and (2) this device must accept any interference received, including interference that may cause undesired operation.

Warning: Changes or modifications not expressly approved by the party responsible for compliance could void the user's authority to operate the equipment.

Note: This equipment has been tested and found to comply with the limits for a Class B digital device, pursuant to Part 15 of the FCC Rules. These limits are designed to provide reasonable protection against harmful interference in a residential installation.

This equipment generates, uses and can radiate radio frequency energy and, if not installed and used in accordance with the instructions, may cause harmful interference to radio communications. However, there is no guarantee that interference will not occur in a particular installation. If this equipment does cause harmful interference to radio or television reception, which can be determined by turning the equipment off and on, the user is encouraged to try to correct the interference by one or more of the following measures: (1) Reorient or relocate the receiving antenna. (2) Increase the separation between the equipment and receiver. (3) Connect the equipment into an outlet on a circuit different from that to which the receiver is connected. (4) Consult the dealer or an experienced radio/TV technician for help.

FCC Radio Frequency Exposure Statement

The device has been evaluated to meet general RF exposure requirements. The device can be used in fixed/mobile exposure condition. The min separation distance is 20 cm.

Notice: Shielded cables

All connections to other computing devices must be made using shielded cables to maintain compliance with FCC regulations.

The following importer is the responsible party.

Company Name: POWER MOBILE LIFE, LLC

Address: 10900 NE 8TH ST, STE 501, BELLEVUE, WA 98004

Telephone: 1-800-988-7973

IC Statement

This device complies with Industry Canada licence-exempt RSS standard(s). Operation is subject to the following two conditions:

- (1) this device may not cause interference, and
- (2) this device must accept any interference, including interference that may cause undesired operation of the device.

Le présent appareil est conforme aux CNR d'Industrie Canada applicables aux appareils radio exempts de licence. L'exploitation est autorisée aux deux conditions suivantes:

- (1) l'appareil ne doit pas produire de brouillage, et
- (2) l'utilisateur de l'appareil doit accepter tout brouillage radioélectrique subi, même si le brouillage est susceptible d'en compromettre le fonctionnement.

This Class B digital apparatus complies with Canadian ICES-003.

Cet appareil numérique de la classe B est conforme à la norme NMB-003 du Canada.

IC RF Statement

When using the product, maintain a distance of 20cm from the body to ensure compliance with RF exposure requirements.

Lors de l'utilisation du produit, maintenez une distance de 20 cm du corps afin de vous conformer aux exigences en matière d'exposition RF.

Declaration of Conformity

This product complies with the radio interference requirements of the European Community.

Hereby, Anker Innovations Limited declares that this device is in compliance with the essential requirements and other relevant provisions of Directive 2014/53/EU. For the declaration of conformity, visit the Web site: <https://uk.eufylife.com/>.

The following importer is the responsible party (contract for EU matters):

Anker Innovations Deutschland GmbH | Georg-Muche-Strasse

3,80807 Munich, Germany

This product is designed and manufactured with high quality materials and components, which can be recycled and reused.

This symbol means the product must not be discarded as household waste, and should be delivered to an appropriate collection facility for recycling. Proper disposal and recycling helps protect natural resources, human health and the environment. For more information on disposal and recycling of this product, contact your local municipality, disposal service, or the shop where you bought this product.

CUSTOMER SERVICE



12-month limited warranty



(US) +1 (800) 988-7973

(UK) +44 (0) 1604 936200

(DE) +49 (0) 69 9579 7960

(中国) +86 400 0550 036

(日本) +81 03 4455 7823

(AU) +61 3 8331 4800

(Egypt) +20 8000000826

(UAE) +971 8000320817

(Kuwait) +965 22069086

(Saudi Arabia) +966 8008500030

(Middle East & Africa) +971 520750842



support@eufy.com

Anker Innovations Limited

Room 1318-19, Hollywood Plaza, 610 Nathan Road,

Mongkok, Kowloon, Hong Kong



@EufyOfficial



@EufyOfficial

@EufyOfficial

Model:T8416
51005003795 V01

09

10

11

12

13

14

15

16