



FCC ID:2AOKB-T8400

IC:23451-T8400

Anker Innovations Limited. All rights reserved. eufy Security and eufy Security Logo are trademarks of Anker Innovations Limited, registered in the United States and other countries. All other trademarks are the property of their respective owners.

5100500xxxx V01

eufy
SECURITY

QUICK START GUIDE

eufy Indoor Cam 2K

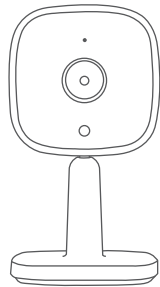
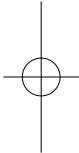




Table of Contents

WHAT'S INCLUDED	02
Product Overview	03
Setting up the system	04
Mounting the eufy Indoor Cam	05
Mount the eufy Indoor Cam	07
Powering on the eufy Indoor Cam	09
Notice	10
Customer Service	14



WHAT'S INCLUDED

eufy Indoor Cam 2K × 1

Model: T8400

Mounting Plate × 1

USB Cable × 1

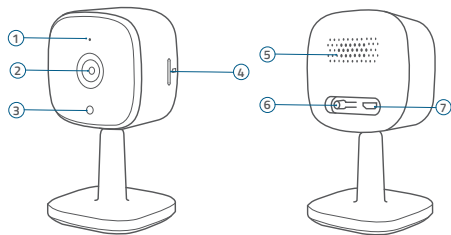
USB Adapter × 1

Mounting Screw Pack × 1

User Manual

Product Overview

eufy Indoor Cam 2K



- ① Microphone
- ② Lens
- ③ Status LED
- ④ SD card slot

- ⑤ Speaker
- ⑥ SYNC button
- ⑦ Power input

Setting up the system

1. Download the eufy Security app from the App Store (iOS devices) or Google Play (Android devices).



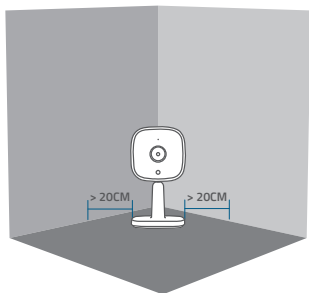
2. Sign up a eufy Security account. Go to the app homepage. Tap Add Device, and add the eufy Indoor Cam to your system.
3. Follow the on-screen instructions to complete the setup.

LED Status

LED Status	Description
Breathing blue	Ready for setup
Solid blue	Powered on and working properly
Blinking red slowly	Disconnected from the internet
Blinking red once	Motion or sound detected
Solid red	Working properly with someone viewing the live stream or recording event
Solid bluish violet	System is initializing
Flashing blue and red alternately	Firmware upgrade in progress

Mounting the eufy Indoor Cam

The camera can be placed on a table, shelf, or can be mounted on a wall or ceiling. Select a location and height where you can get the desired view, and can reach a power outlet easily.



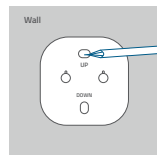
- Disconnect the eufy Indoor Cam from the power outlet before mounting.
- Keep the eufy Indoor Cam at least 0.7 ft / 20 cm away from walls or anything that may obstruct the view. Do this to avoid infrared reflection which can have a negative impact on the night vision performance.

Mount the eufy Indoor Cam

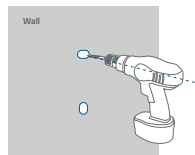
The eufy Indoor Cam can be mounted on the wall or ceiling.

To mount the eufy Indoor Cam on the wall:

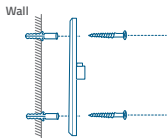
1. Align the positioning card and then mark the points at which drilling will be required.



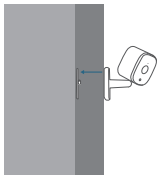
2. Drill holes with a 15/64" (6 mm) drill bit.



3. Align the holes on the mounting plate with those on the wall, matching the direction as UP and Down indicates. Insert the anchors into the holes; anchors are necessary for walls that are made out of hard materials such as concrete, brick, or stucco. Fix the screws with a Phillips-head screwdriver to fasten the mounting plate onto the wall.



4. Align the eufy Indoor Cam's mounting slot with the mounting plate, and then push the camera down until it clicks into place.



To mount the eufy Indoor Cam on the ceiling, follow the steps 1-4 to secure the camera base onto the mounting plate.

Powering on the eufy Indoor Cam

Connect the eufy Indoor Cam to the power outlet using the provided USB cable and USB adapter. After powered on, the eufy Indoor Cam will be connected to the system. When it is successfully connected, the status LED will turn solid blue.

Rotate the eufy Indoor Cam to adjust the view by checking the live streams in the eufy Security app. You are all set to use the eufy Indoor Cam.



For troubleshooting, check Help on the eufy Security app. Refer to the app page for LED indicator status.

Notice

FCC Statement

This device complies with Part 15 of the FCC Rules. Operation is subject to the following two conditions: (1) this device may not cause harmful interference, and (2) this device must accept any interference received, including interference that may cause undesired operation.

Warning: Changes or modifications not expressly approved by the party responsible for compliance could void the user's authority to operate the equipment.

Note: This equipment has been tested and found to comply with the limits for a Class B digital device, pursuant to Part 15 of the FCC Rules. These limits are designed to provide reasonable protection against harmful interference in a residential installation.

This equipment generates uses and can radiate radio frequency energy and, if not installed and used in accordance with the instructions, may cause harmful interference to radio communications. However, there is no guarantee that interference will not occur in a particular installation. If this equipment does cause harmful interference to radio or television reception, which can be determined by turning the equipment off and on, the user is encouraged to try to correct the interference by one or more of the following measures:

(1) Reorient or relocate the receiving antenna. (2) Increase the separation between the equipment and receiver. (3) Connect the equipment into an outlet on a circuit different from that to which the receiver is connected. (4) Consult the dealer or an experienced radio/ TV technician for help.

FCC Radio Frequency Exposure Statement

The device has been evaluated to meet general RF exposure requirements. The device can be used in fixed/mobile exposure condition. The min separation distance is 20cm.

Notice: Shielded cables

All connections to other computing devices must be made using shielded cables to maintain compliance with FCC regulations.

10 English

The following importer is the responsible party
Company Name: POWER MOBILE LIFE, LLC
Address: 400 108th Ave NE Ste 400, Bellevue, WA 98004-5541
Telephone: 1-800-988-7973



This product complies with the radio interference requirements of the European Community.

Declaration of Conformity

Hereby, Anker Innovations Limited declares that this device is in compliance with the essential requirements and other relevant provisions of Directive 2014/53/EU. For the declaration of conformity, visit the Web site:
<https://www.eufylife.com/>.

This product can be used across EU member states.

The adapter shall be installed near the equipment and shall be easily accessible. Do not use the Device in the environment at too high or too low temperature, never expose the Device under strong sunshine or too wet environment.

The suitable temperature for T8400 and accessories is 0°C-40°C.

When charging, please place the device in an environment that has a normal room temperature and good ventilation.

It is recommended to charge the device in an environment with a temperature that ranges from 5°C~25°C.

Please ensure to use only the charger offered by the manufacturer. Using unauthorized charger may cause danger and violate the authorization of the device and the guarantee article.

English 11

This charger is for indoor use only.

The charger type is TEKA006-0501000EU , output voltage/current is 5Vdc/1A.The plug considered as disconnect device of adapter.

RF exposure information:The Maximum Permissible Exposure (MPE) level has been calculated based on a distance of $d=20$ cm between the device and the human body.To maintain compliance with RF exposure requirement, use product that maintain a 20cm distance between the device and human body.

CAUTION RISK OF EXPLOSION IF BATTERY IS REPLACED BY AN INCORRECT TYPE. DISPOSE OF USED BATTERIES ACCORDING TO THE INSTRUCTIONS

Wi-Fi Operating Frequency Range:2412~2472MHz ;Wi-Fi Max Output Power: 19dBm
Bluetooth Operating Frequency Range: 2402~2480MHz; Bluetooth Max Output Power: 8dBm(EIRP)

The following importer is the responsible party (contact for EU matters only)
Importer:Anker Technology (UK) Ltd
Importer Address: Suite B, Fairgate House, 205 Kings Road, Tyseley, Birmingham, B11 2AA, United Kingdom



This product is designed and manufactured with high quality materials and components, which can be recycled and reused.



This symbol means the product must not be discarded as household waste, and should be delivered to an appropriate collection facility for recycling. Proper disposal and recycling helps protect natural resources, human health and the environment. For more information on disposal and recycling of this product, contact your local municipality, disposal service, or the shop where you bought this product.

IC Statement

This device complies with Industry Canada licence-exempt RSS standard(s). Operation is subject to the following two conditions:

- (1) this device may not cause interference, and
- (2) this device must accept any interference, including interference that may cause undesired operation of the device."

Le présent appareil est conforme aux CNR d'Industrie Canada applicables aux appareils radio exempts de licence. L'exploitation est autorisée aux deux conditions suivantes:

- (1) l'appareil n' doit pas produire de brouillage, et
- (2) l'utilisateur de l'appareil doit accepter tout brouillage radioélectrique subi, même si le brouillage est susceptible d'en compromettre le fonctionnement."

This Class B digital apparatus complies with Canadian ICES-003.

Cet appareil numérique de la classe B est conforme à la norme NMB-003 du Canada.

IC RF Statement:

When using the product, maintain a distance of 20cm from the body to ensure compliance with RF exposure requirements.

Lors de l'utilisation du produit, maintenez une distance de 20 cm du corps afin de vous conformer aux exigences en matière d'exposition RF.

Customer Service

- **Warranty**

12-month Limited Warranty

- **Call Us**

United States +1 (800) 988 7973 Mon-Fri 9AM-5PM (PT)

United Kingdom +44 (0) 1604 936 200 Mon-Fri 6AM-11AM (GMT)

Germany +49 (0) 69 9579 7960 Mon-Fri 6:00-11:00

- **Email Us**

Customer Support: support@eufylife.com



@EufyOfficial



@EufyOfficial



eufyofficial

Anker Innovations Limited

Room 1318-19, Hollywood Plaza, 610 Nathan
Road, Mongkok, Kowloon, Hong Kong

