



FCC ID:2AOKB-T8200
IC:23451-T8200
Model Name: T8200

Quick Start Guide

Video Doorbell 2K (Wired)

Anker Innovations Limited. All rights reserved. eufy Security and eufy Security Logo are trademarks of Anker Innovations Limited, registered in the United States and other countries. All other trademarks are the property of their respective owners.

51005001514 V01

Tabel of Content

What's in the Box	02
What's Required for Installation	03
Video Doorbell Installation	03
Safety	10
Customer Service	12

What's in the Box



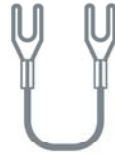
eufy Security Video Doorbell (T8200)



Doorbell Chime (T8740)



Extension Wires / Wire Nuts



Wire for Existing Chime

FCC ID: 2AOKB-T8200

IC: 23451-T8200



Screw Hole Positioning-Card



Mounting Blanket



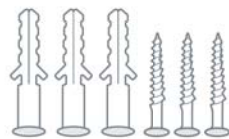
15° Mounting Widget



Quick Start Guide



Doorbell Detaching Tool



Screw Packs

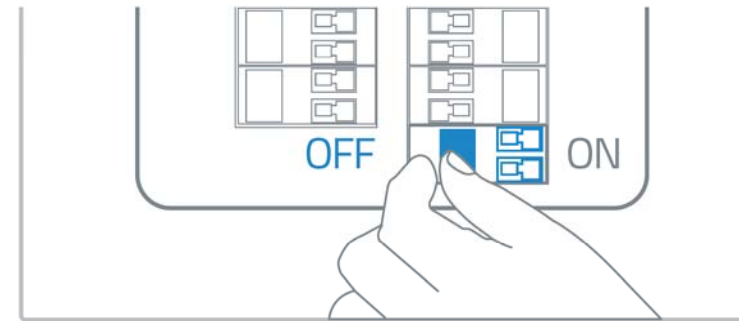
What's Required for Installation

Phillips Screwdriver

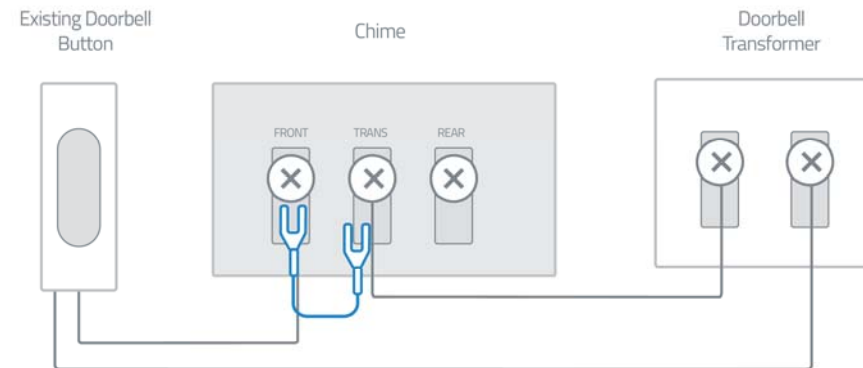
Power Drill with 15/64" (6mm) Drill Bit

Video Doorbell Installation

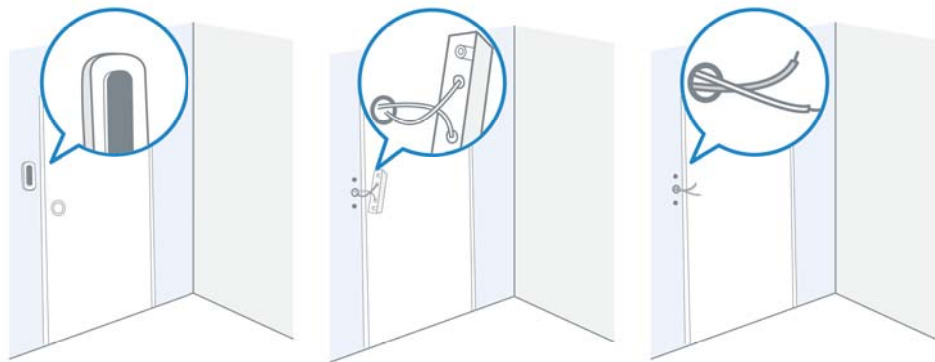
1. Ring the existing doorbell, make sure it's working and locate the place of your chimes.
2. Shut off the master circuit breaker in your house. Turn the lights in your home on/off to make sure the electricity in your house is properly shut off.



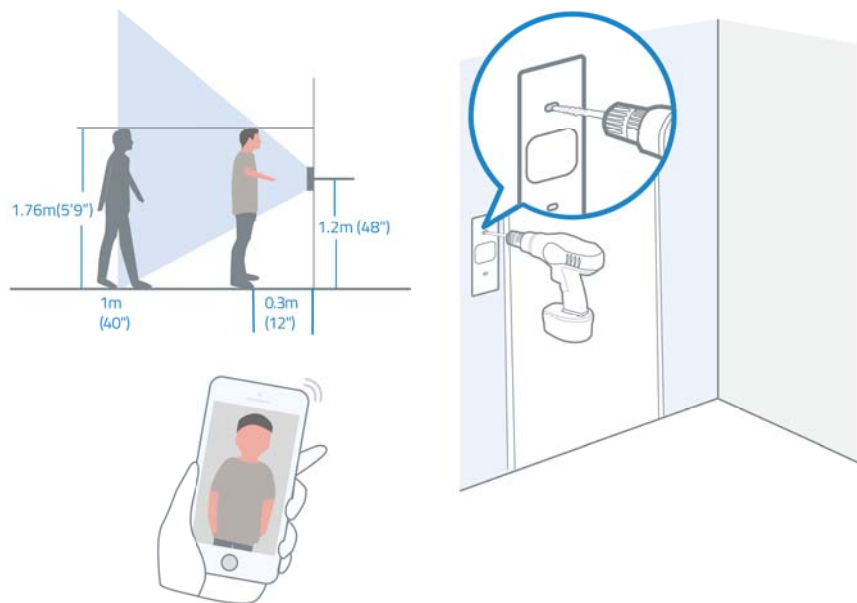
3. Find the doorbell chime in your house, then remove the cover and find the screw terminals with TRANS and FRONT markings. Use the provided wire for existing chime to connect the two terminals. This is to bypass the doorbell chime and will not affect the normal operation of the circuit.



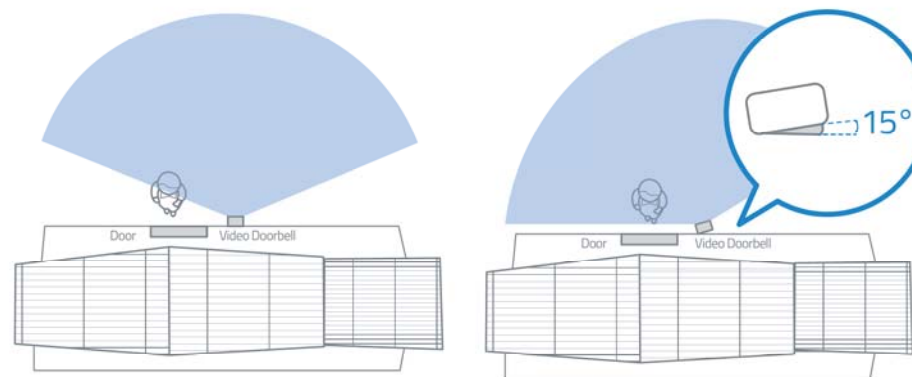
4. Remove the existing doorbell button at the front door. Pull the two wires out carefully when removing the old doorbell. Straighten the wire ends if necessary.



5. Use the screw hole positioning-card to mark the screw holes in the place of the existing doorbell button, place it at least 1.2m(48") high from the ground for optimal viewing result, then drill two holes (Use 15/64" (6mm) drill bit).



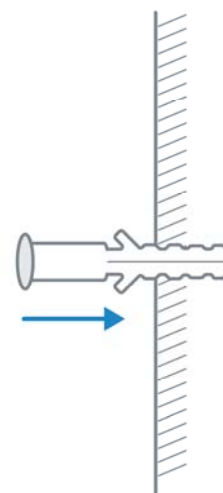
- Optional: Use the 15° mounting widget as a supplementary mounting bracket if your video doorbell does not have a good viewing angle.



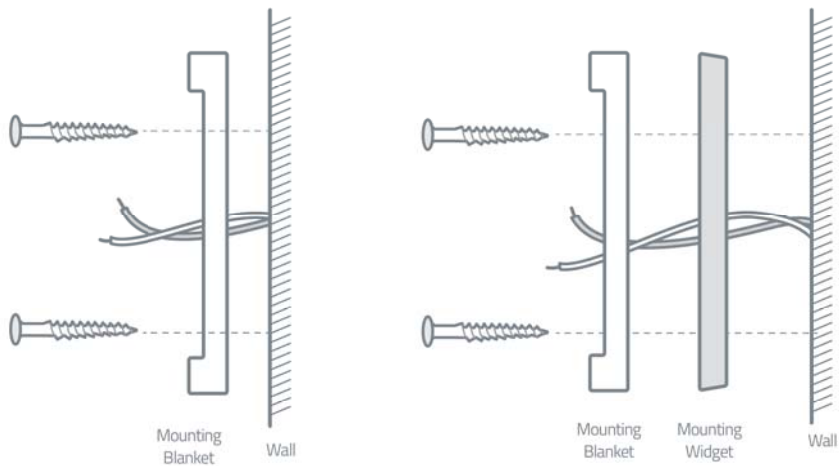
Without 15° Mounting Widget

With 15° Mounting Widget

6. Use the anchors provided when installing in materials such as stucco, brick, or concrete. There is no need to use anchor if you were installing on wooden doorframe.



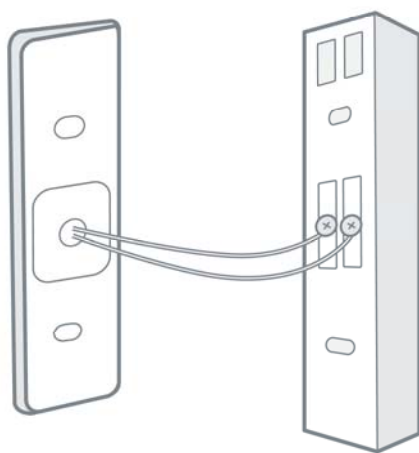
7. Insert the two screws provided through the screw holes or through the 15° mounting widget (Install the mounting blanket to the 15° mounting widget in prior), and fasten the screws tightly.



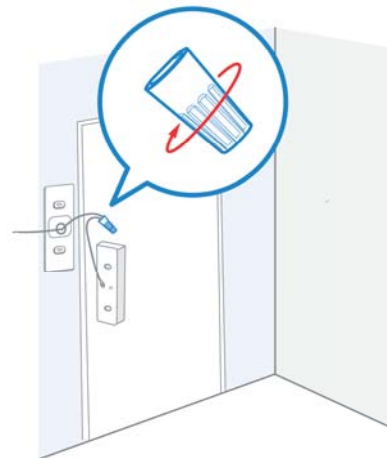
Without 15° Mounting Widget

With 15° Mounting Widget

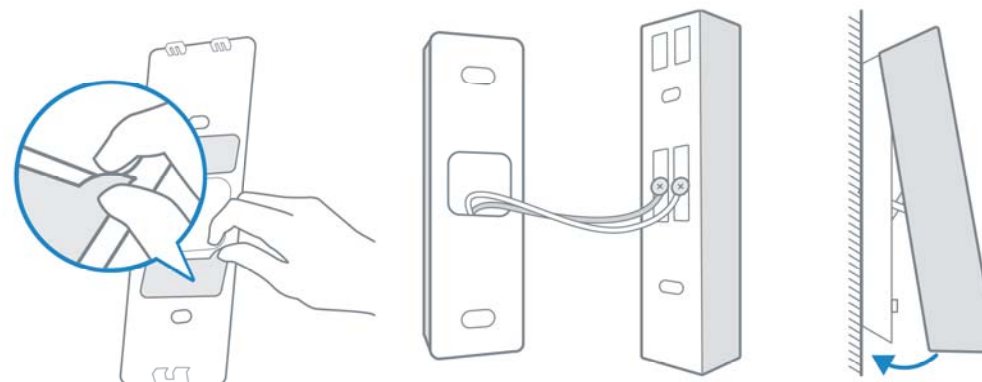
8. Connect the wires to the two terminals at the back of the doorbell, then tighten the terminal screws. Avoid short-circuit when connecting wires. If the wires are too short, use the extension wires and wire nuts provided to make them longer.



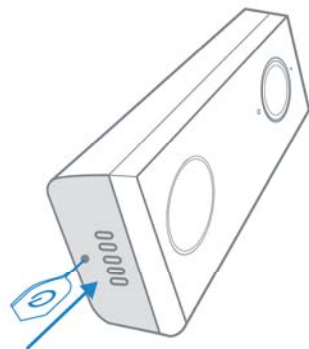
Note: Only use the extension wires if the wires from wall are too short.



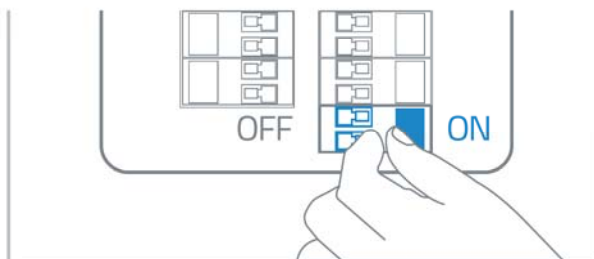
9. Remove the films of thermal conductive pads and then mount the video doorbell on the wall.



Use the doorbell detaching tool provided if you wish to detach the doorbell from the mounting blanket.



10. Switch the master circuit breaker in your house back to on.



11. Wait until the doorbell ring flashes yellow.



12. Follow the onscreen instructions in the EufySecurity app to install your video doorbell.



Safety

FCC Statement

This device complies with Part 15 of the FCC Rules. Operation is subject to the following two conditions: (1) this device may not cause harmful interference, and (2) this device must accept any interference received, including interference that may cause undesired operation.

Warning: Changes or modifications not expressly approved by the party responsible for compliance could void the user's authority to operate the equipment.

Note: This equipment has been tested and found to comply with the limits for a Class B digital device, pursuant to Part 15 of the FCC Rules. These limits are designed to provide reasonable protection against harmful interference in a residential installation.

This equipment generates uses and can radiate radio frequency energy and, if not installed and used in accordance with the instructions, may cause harmful interference to radio communications. However, there is no guarantee that interference will not occur in a particular installation. If this equipment does cause harmful interference to radio or television reception, which can be determined by turning the equipment off and on, the user is encouraged to try to correct the interference by one or more of the following measures: (1) Reorient or relocate the receiving antenna. (2) Increase the separation between the equipment and receiver. (3) Connect the equipment into an outlet on a circuit different from that to which the receiver is connected. (4) Consult the dealer or an experienced radio/TV technician for help.

FCC Radio Frequency Exposure Statement

The device has been evaluated to meet general RF exposure requirements. The device can be used in fixed/mobile exposure condition. The min separation distance is 20cm.

Notice: Shielded cables

All connections to other computing devices must be made using shielded cables to maintain compliance with FCC regulations.

The following importer is the responsible party

Company Name: POWER MOBILE LIFE, LLC

Address: 400 108th Ave NE Ste 400, Bellevue, WA 98004-5541

Telephone:1-206-383-8247

 This product complies with the radio interference requirements of the European Community.

Declaration of Conformity

Hereby, Anker Innovations Limited declares that this device is in compliance with the essential requirements and other relevant provisions of Directive 2014/53/EU. For the declaration of conformity, visit the Web site www.eufylife.com

Do not use the Device in the environment at too high or too low temperature, never expose the Device under strong sunshine or too wet environment.

The suitable temperature for T8200 is -20°C-50°C.

The suitable temperature for T8740 is 0°C-45°C.

RF exposure information: The Maximum Permissible Exposure (MPE) level has been calculated based on a distance of d=20 cm between the device and the human body. To maintain compliance with RF exposure requirement, use product that maintain a 20cm distance between the device and human body.

CAUTION RISK OF EXPLOSION IF BATTERY IS REPLACED BY AN INCORRECT TYPE. DISPOSE OF USED BATTERIES ACCORDING TO THE INSTRUCTIONS

Wi-Fi Operating Frequency Range: 2412~2472MHz for EU;

Wifi Max Output Power: 19dBm

Bluetooth Operating Frequency Range: 2402~2480MHz; Bluetooth Max Output Power: 8dBm

433MHz Frequency Range: 433.92MHz; 433MHz Max Output Power: 10dBm

The following importer is the responsible party (contact for EU matters only)

Importer: Anker Technology (UK) Ltd

Importer Address: Suite B, Fairgate House, 205 Kings Road, Tyseley, Birmingham, B11 2AA, United Kingdom



This product is designed and manufactured with high quality materials and components, which can be recycled and reused.



This symbol means the product must not be discarded as household waste, and should be delivered to an appropriate collection facility for recycling. Proper disposal and recycling helps protect natural resources, human health and the environment. For more information on disposal and recycling of this product, contact your local municipality, disposal service, or the shop where you bought this product. This device complies with Industry Canada licence-exempt RSS standard(s). Operation is subject to the following two conditions:

(1) this device may not cause interference, and

(2) this device must accept any interference, including interference that may cause undesired operation of the device."

Le présent appareil est conforme aux CNR d'Industrie Canada applicables aux appareils radio exempts de licence. L'exploitation est autorisée aux deux conditions suivantes:

(1) l'appareil ne doit pas produire de brouillage, et

(2) l'utilisateur de l'appareil doit accepter tout brouillage radioélectrique subi, même si le brouillage est susceptible d'en compromettre le fonctionnement."

Please note that your rights under applicable law governing the sale of consumer goods remain unaffected by the warranties given in this Limited Warranty.

This Class B digital apparatus complies with Canadian ICES-003.

Cet appareil numérique de la classe B est conforme à la norme NMB-003 du Canada.

IC RF Statement:

When using the product, maintain a distance of 20cm from the body to ensure compliance with RF exposure requirements.

Lors de l'utilisation du produit, maintenez une distance de 20 cm du corps afin de vous conformer aux exigences en matière d'exposition RF.

Customer Service

- **Warranty**

12-month limited warranty

- **Call Us**

United States +1 (800) 988 7973 Mon-Fri 9AM-5PM (PT)

United Kingdom +44 (0) 1604 936 200 Mon-Fri 6AM-11AM (GMT)

Germany +49 (0) 69 9579 7960 Mon-Fri 6:00-11:00

- **Email Us**

Customer Support: support@eufylife.com

Anker Innovations Limited

Room 1318-19, Hollywood Plaza, 610 Nathan Road, Mongkok, Kowloon, Hong Kong

 @EufyOfficial

 @EufyOfficial

 eufyofficial