

NEBULA

For a detailed user manual and more information,
scan the QR code or visit:

support.seenebula.com/s



✉ support@seenebula.com
support@anker.com (日本)
support.mea@seenebula.com
(For Middle East and Africa Only)
CED-CN@anker.com (中国)

☎ +1 (800) 988 7973 (US/Canada)
+44 (0) 1604 936200 (UK)
+49 (0) 69 9579 7960 (DE)
+971 42428633 (Middle East & Africa)
+971 8000320817 (UAE)
+966 8008500030 (KSA)
+965 22069086 (Kuwait)
+20 8000000826 (Egypt)
+61 3 8331 4800 (AU)
+90 (850) 460 14 14 (TR)
+8 (800) 511-86-23 (RU)
+86 400 0550 036 (中国)
03 4455 7823 (日本)
+82 02-1670-7098 (한국)
+91 18003138831 (India)

© Anker Innovations Limited. All rights reserved.
NEBULA and the NEBULA logo are trademarks of Anker Innovations
Limited, registered in the United States and other countries.
Model: D2426

51005003592 V01

- User should comply with the laws and regulations of the corresponding countries and regions where the equipment is located (used), abide by professional ethics, pay attention to safety obligations, and strictly prohibit the use of our products or equipment for any illegal purposes. Our company will not be responsible for any violators' legal liability under any circumstances.

Warning:

- Replacement of a battery with an incorrect type that can defeat a safeguard;
- Disposal of a battery into fire or a hot oven, or mechanically crushing or cutting of a battery, that can result in an explosion;
- Leaving a battery in an extremely high temperature surrounding environment that can result in an explosion or the leakage of flammable liquid or gas; and
- A battery subjected to extremely low air pressure that may result in an explosion or the leakage of flammable liquid or gas.

Attention:

- Remplacement d'une batterie par un type incorrect pouvant supprimer une protection;
- Mise au rebut d'une batterie dans un feu ou dans un four chaud, ou écrasement mécanique ou coupure d'une batterie, susceptible de provoquer une explosion;
- Maintien d'une batterie dans un environnement à très haute température pouvant provoquer une explosion ou la fuite de liquide ou de gaz inflammables; et
- Batterie soumise à une pression de l'air extrêmement faible pouvant provoquer une explosion ou la fuite de liquide ou de gaz inflammables.



CAUTION: RISK OF EXPLOSION IF BATTERY IS REPLACED BY AN INCORRECT TYPE. DISPOSE OF USED BATTERIES ACCORDING TO THE INSTRUCTIONS.



ATTENTION RISQUE D'EXPLOSION SI LA BATTERIE EST REMPLACÉE PAR UN TYPE INCORRECT. ÉLIMINER LES BATTERIES USÉES SELON LES INSTRUCTIONS.

Notice (Europe and United Kingdom)



This product complies with the radio interference requirements of the European Community.

Declaration of Conformity

Hereby, Anker Innovations Limited declares that this device is in compliance with the essential requirements and other relevant provisions of Directive 2014/53/EU. For the Declaration of Conformity, visit the Web site <https://uk.seenebula.com/>.



This product complies with the radio interference requirements of the United Kingdom.

Declaration of Conformity

Hereby, Anker Innovations Limited declares that this device is in compliance with Radio Equipment Regulations 2017(SI 2017/1206). The full text of the UK declaration of conformity is available at the following internet address: <https://uk.seenebula.com/>.

The suitable temperature range for the projector and its accessories is 0°C-25°C.
The adapter is for indoor use only. The adapter type is PN4531 (with rated output voltage / current of 5VDC/3A or 9VDC/3A or 12VDC/3A or 15VDC/3A or 20VDC/2.25A) or A2713 (with rated output voltage / current of 5VDC/3A or 9VDC/3A or 15VDC/3A or 20VDC/3.25A).

RF exposure information

The Maximum Permissible Exposure (MPE) level has been calculated based on a distance of d=20 cm

between the device and the human body. To maintain compliance with RF exposure requirement, use product that maintain a 20cm distance between the device and human body.

Frequency bands and power as below:

Function	Bands	Operation Frequency	Max.Power
Bluetooth (Projector)	2.4 GHz	2402-2480 MHz	EIRP 13.58dBm
WiFi (Projector)	2.4 GHz	2412-2472 MHz	EIRP 19.8dBm
		5150-5250 MHz	EIRP 22.32dBm
	5 GHz	5250-5350 MHz	EIRP 19.7 dBm
		5470-5725 MHz	EIRP 19.96 dBm
Bluetooth (Remote Control)	2.4 GHz	5725-5850 MHz	EIRP 13.93 dBm
		2402-2480 MHz	EIRP 8.0 dBm

5150~5350 MHz can be used indoors only.

AT	BE	BG	HR	CY	CZ	DK
EE	FI	FR	DE	EL	HU	IE
IT	LV	LT	LU	MT	NL	PL
PT	RO	SK	SI	ES	SE	UK

The following importer is the responsible party (contract for EU matters):

Anker Innovations Deutschland GmbH I
Georg-Mueller-Strasse 3, 80807 Munich, Germany
The following importer is the responsible party (contract for UK matters):

Anker Technology (UK) Limited I GNR8, 49 Clarendon Road, Watford, Hertfordshire, WD17 1HP, United Kingdom



Your product is designed and manufactured with high quality materials and components, which can be recycled and reused.



This symbol means the product must not be discarded as household waste, and should be delivered to an appropriate collection facility for recycling. Proper disposal and recycling helps protect natural resources, human health, and the

environment. For more information on disposal and recycling of this product, contact your local municipality, disposal service, or the shop where you bought this product.

Notice (United States of America)

FCC Statement

This device complies with Part 15 of the FCC Rules. Operation is subject to the following two conditions: (1) this device may not cause harmful interference, and (2) this device must accept any interference received, including interference that may cause undesired operation.

Warning: Changes or modifications not expressly approved by the party responsible for compliance could void the user's authority to operate the equipment.

Note: This equipment has been tested and found to comply with the limits for a Class B digital device, pursuant to Part 15 of the FCC Rules. These limits are designed to provide reasonable protection against harmful interference in a residential installation.

This equipment generates uses and can radiate radio frequency energy and, if not installed and used in accordance with the instructions, may cause harmful interference to radio communications. However, there is no guarantee that interference will not occur in a particular installation. If this equipment does cause harmful interference to radio or television reception, which can be determined by turning the equipment off and on, the user is encouraged to try to correct the interference by one or more of the following measures: (1) Reorient or relocate the receiving antenna. (2) Increase the separation between the equipment and receiver. (3) Connect the equipment into an outlet on a circuit different from that to which the receiver is connected. (4) Consult the dealer or an experienced radio/TV technician for help.

5150~5350 MHz can be used indoors only

FCC Radio Frequency Exposure Statement

The device has been evaluated to meet general RF exposure requirements. The device can be used in fixed/mobile exposure condition. The min separation distance is 20cm.

Notice: Shielded cables

All connections to other computing devices must be made using shielded cables to maintain compliance with FCC regulations. The following importer is the responsible party.
Company Name: Fantasia Trading LLC
Address: 5350 Ontario Mills Pkwy, Suite 100, Ontario, CA 91764
Telephone: 1-800-988-7973

Notice (Canada)

IC Statement

This device complies with Industry Canada licence-exempt RSS standard(s). Operation is subject to the following two conditions:
1) this device may not cause interference, and
2) this device must accept any interference, including interference that may cause undesired operation of the device.

Le présent appareil est conforme aux CNR d'Industrie Canada applicables aux appareils radio exempts de licence. L'exploitation est autorisée aux deux conditions suivantes:

- 1) l'appareil n'émet pas de brouillage, et
- 2) l'utilisateur de l'appareil doit accepter tout brouillage radioélectrique subi, même si le brouillage est susceptible d'en compromettre le fonctionnement.

This Class B digital apparatus complies with Canadian ICES-003.

Cet appareil numérique de la classe B est conforme à la norme NMB-003 du Canada.

IC RF Statement

When using the product, maintain a distance of 20cm from the body to ensure compliance with RF exposure requirements.
Lors de l'utilisation du produit, maintenez une distance de 20 cm du corps afin de vous conformer aux exigences en matière d'exposition RF.
5150~5250 MHz can be used indoors only.
5150~5250 MHz peut être utilisé à l'intérieur uniquement.

Notice (Republic of Korea)

모델명 : D2426
인증번호 : R-C-AII-D2426

제품명 : 특정소출력 무선기기 (무선데이터통신시스템용 무선기기)
제조자및제조국가: Anker Innovations Limited
제조년월 : 2022.09
해당 무선설비는 운용 중 전파혼신 가능성이 있음 . 해당 무선설비는 전파혼신 가능성이 있으므로 인명안전과 관련된 서비스는 할 수 없음 .



The Bluetooth® word mark and logos are registered trademarks owned by the Bluetooth SIG, Inc. and any use of such marks by Anker Innovations Limited is under license. Other trademarks and trade names are those of their respective owners.



HDMI, and HDMI logo and High-Definition Multimedia Interface are trademarks or registered trademarks of HDMI licensing LLC in the United States and other countries.



Manufactured under license from Dolby Laboratories. Dolby, Dolby Audio, and the double-D symbol are trademarks of Dolby Laboratories Licensing Corporation.

PAP 22

Raccolta Carta

Anker Innovations Limited

Room 1318-19, Hollywood Plaza, 610 Nathan Road, Mongkok, Kowloon, Hong Kong

RG1 IEC 62471-5:2015

Complies with IEC 60825-1:2014 Class 1 and IEC 62471-5:2015 Risk Group 1

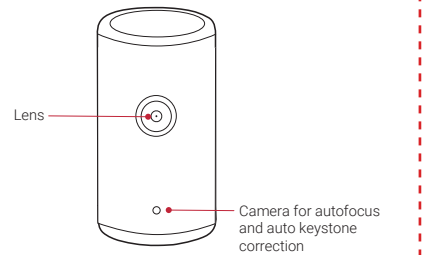
NEBULA
by Anker



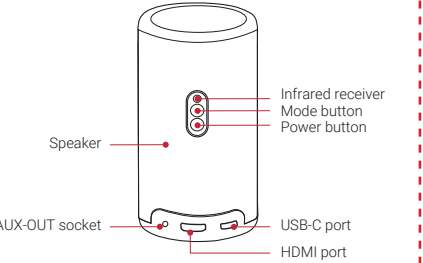
Nebula Capsule 3 Laser Quick Start Guide

At a Glance

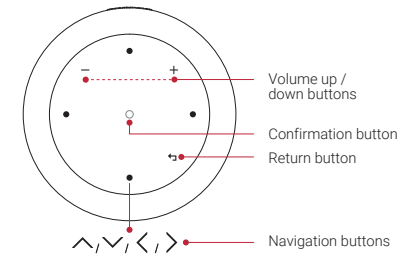
1. Front View



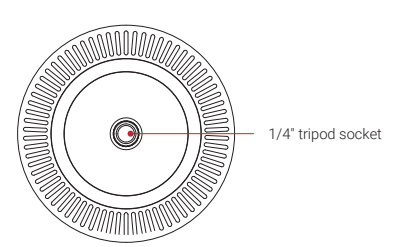
2. Rear View



3. Top View

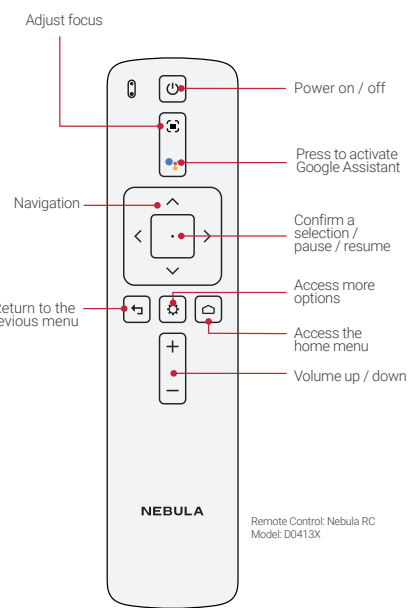


4. Bottom View



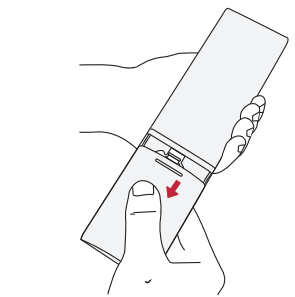
Remote Control

1. Overview



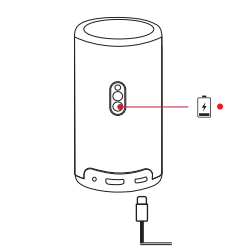
2. Prepare the Remote Control

1 For first-time use, slide to open the battery compartment, and install two AAA batteries.



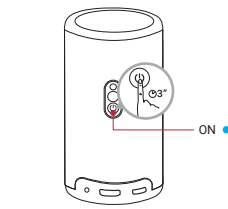
Charge Your Projector

For first-time use, fully charge the built-in battery using the provided adapter.



Power On

Press and hold for 3 seconds to power on the projector.



Enable Autofocus

- Slightly move the projector to enable autofocus and auto keystone correction.
- Press to enable autofocus.

Basic Setup

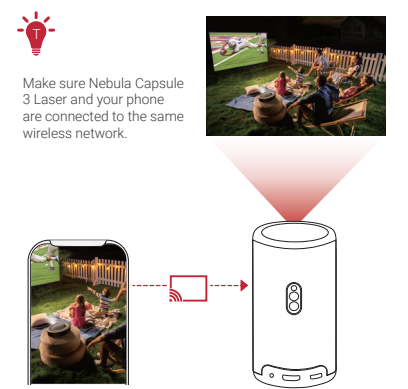
For first-time use, follow the on-screen instructions to complete the basic setup. Adjust settings in the projector's **Settings** menu if necessary.

Use as a Projector

1. Screen Mirroring

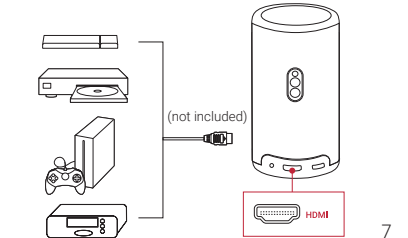
Wirelessly cast movies, games, and music from your phone to Nebula Capsule 3 Laser.

- 1 Play a video clip on your phone and tap the cast icon on the video screen.
- 2 Select the device **D2426**. The projector will mirror the screen of the connected phone.



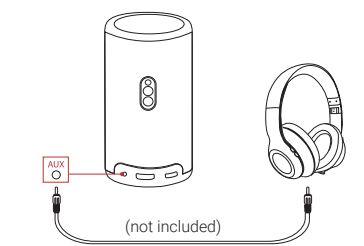
2. Play from HDMI Playback Devices

Connect to HDMI playback devices such as a TV box, TV stick, DVD player, set-top box (STB), or gaming consoles.



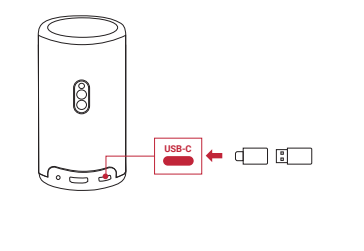
3. Play Through External Sound Devices

Connect to external sound output devices, including headphones and speakers.



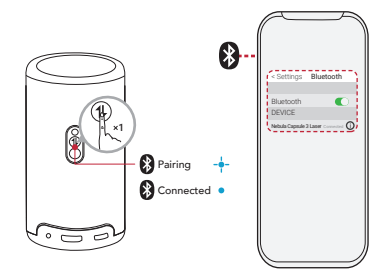
4. Play from a USB Drive

Connect to a USB-A drive (with the USB converter) or USB-C drive to enjoy stored music, video, and pictures.



Use as a Bluetooth Speaker

Press to switch to Bluetooth speaker mode and select **Nebula Capsule 3 Laser** to connect.



Nebula Connect App

Download the Nebula Connect app for the best projector experience.



Important Safety Instructions

- Due to the enclosure material, the product must only be connected to a USB 2.0 or higher.
- The adapter shall be installed near the product and shall be easily accessible.
- Please ensure you use only the adapter offered by the manufacturer. Using unauthorized adapter may cause danger and violate the authorization of the product and the guarantee article.
- Do not use the product in an environment where the temperature is too high or too low. Never expose the product to strong sunshine or wet environments.
- It is recommended to supply the product in an environment with a temperature that ranges from 5°C-25°C.
- When supplying, place the device in an environment that has a normal room temperature and good ventilation.
- Possibly hazardous optical radiation emitted from this product may be harmful to the eyes. Do not stare at operating beam.
- Potential hazards may exist during lamp or product servicing.
- Service shall be performed only by authorized, trained servicing, trained servicing personnel.
- Do not open the enclosure of the product.
- When the enclosure of the product is damaged, please do not use it anymore.
- Do not open the enclosure of laser module inside the product.
- When the enclosure of laser module inside the product is damaged, please do not use it anymore.
- Laser inside, be aware of the risk of skin or corneal burns.
- Do not use the product in any way other than described herein in order to avoid personal injury or property damage.