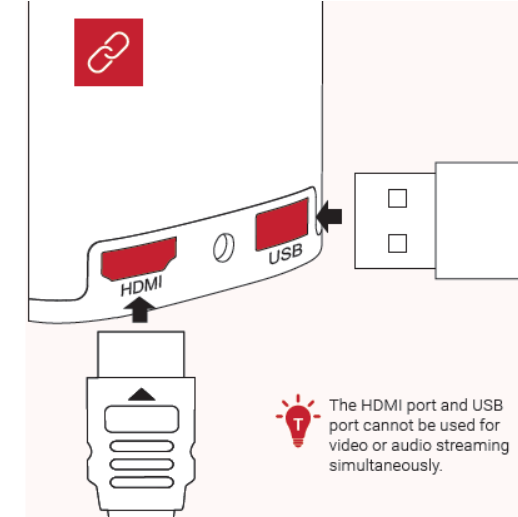
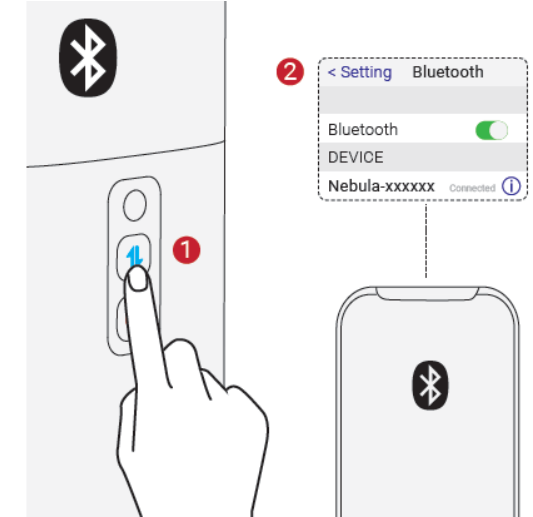
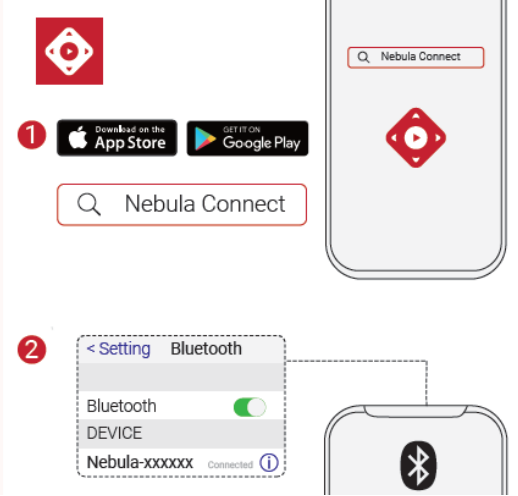
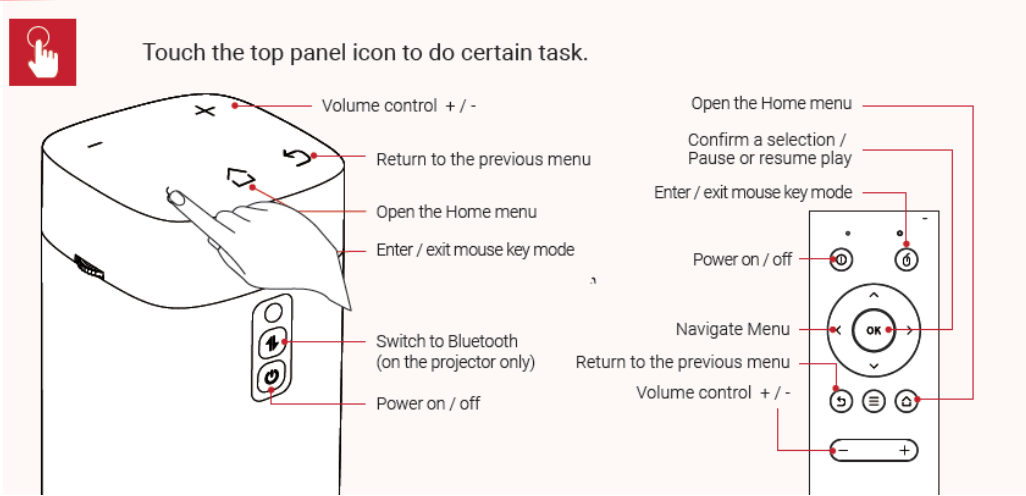
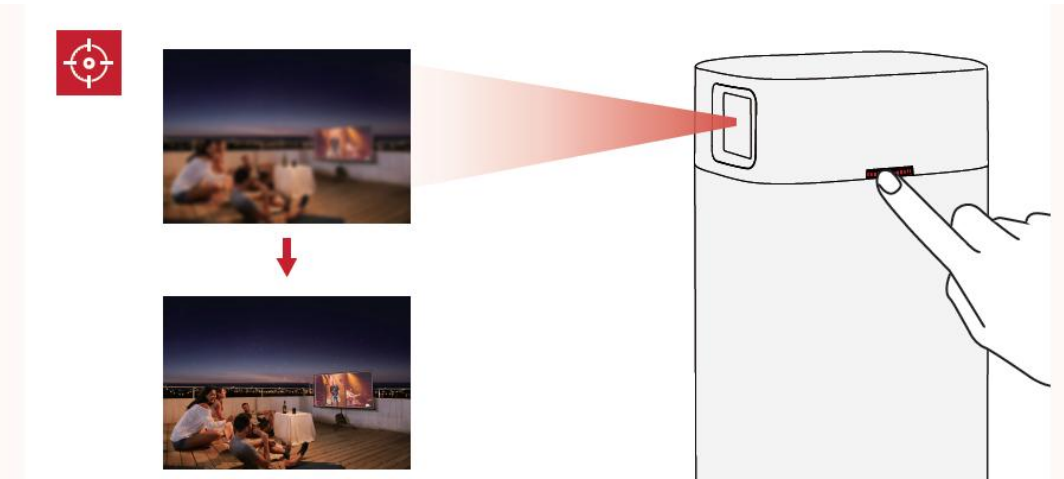
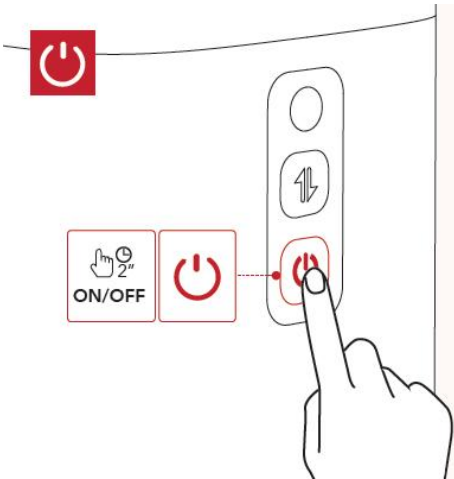
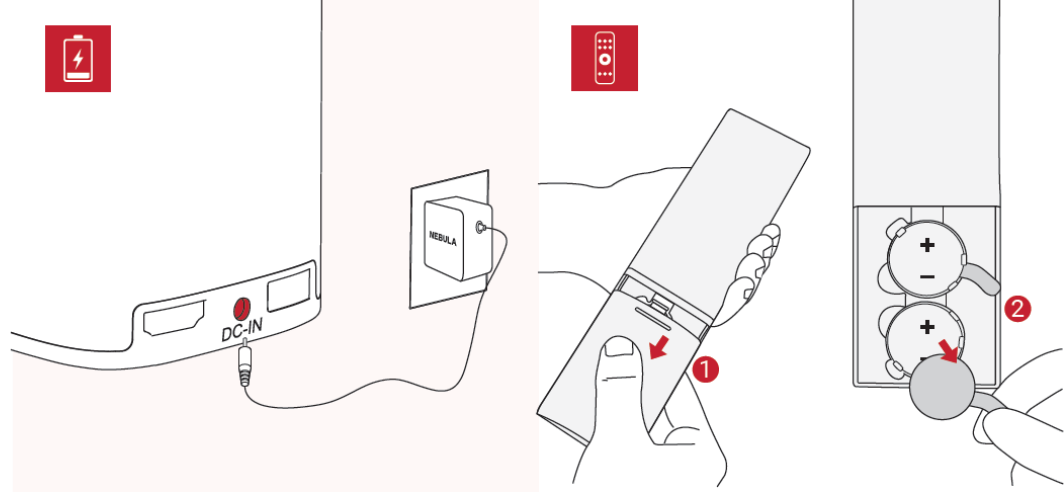




Quick Start Guide

Nebula Apollo



Important Safety Instructions

- Due to the enclosure material, the product must only be connected to a USB 2.0 or higher.
- The adapter should be installed near the equipment and must be easily accessible.
- Do not use the device in an environment where the temperature is too high or too low. Never expose the device to strong sunshine or wet environments.
- The ideal temperature range for this product and its accessories is 14°F-95°F / -10°C-35°C.
- When charging, place the device in an environment that has a normal room temperature and good ventilation. It is recommended to charge the device in an environment with a temperature that ranges from 41°F - 77°F / 5°C - 25°C.
- Only use the charger provided by the manufacturer. Using unauthorized chargers may cause danger and violate the authorization of the projector as well as the guarantee.
- This charger is for indoor use only.
- The charger type is DST451-150300W-K with output voltage / current of DC 15V / 3A. The plug of the adapter is considered as the disconnect device. Once unplugged, the charger is considered as disconnected from the power source.

	AT	BE	BG	HR	CY	CZ	DK
	EE	FI	FR	DE	EL	HU	IE
	IT	LV	LT	LU	MT	NL	PL
	PT	RO	SK	SI	ES	SE	UK

The following importer is the responsible party (contact for EU matters only)

Importer: Anker Technology (UK) Ltd

Importer Address: Suite B, Fairgate House, 205 Kings Road, Tyseley, Birmingham, B11 2AA, United Kingdom



Your product is designed and manufactured with high quality materials and components, which can be recycled and reused.



This symbol means the product must not be discarded as household waste, and should be delivered to an appropriate collection facility for recycling. Proper disposal and recycling helps protect natural resources, human health and the environment. For more information on disposal and recycling of this product, contact your local municipality, disposal service, or the shop where you bought this product.

FCC Statement

This device complies with Part 15 of the FCC Rules. Operation is subject to the following two conditions: (1) this device may not cause harmful interference, and (2) this device must accept any interference received, including interference that may cause undesired operation.

This transmitter must not be co-located or operated in conjunction with any other antenna or transmitter.

Notice: Shielded cables

All connections to other computing devices must be made using shielded cables to maintain compliance with FCC regulations.

The following importer is the responsible party.

Company Name: Fantasia Trading LLC

Address: 9155 Archibald Ave, Suite 202, Rancho Cucamonga, CA 91730, USA

Telephone: 1-909-484-1530

To get a full user manual, visit the website: www.seenebula.com/downloads

Um eine vollständige Bedienungsanleitung zu erhalten, besuchen Sie die Website: www.seenebula.com/downloads

Pour obtenir un manuel d'utilisation complet, visitez le site Web: www.seenebula.com/downloads

Para obtener un manual de usuario completo, visite el sitio web: www.seenebula.com/downloads

Per ottenere un manuale utente completo, visitare il sito Web: www.seenebula.com/downloads

www.seenebula.com/downloads: للحصول على دليل مستخدم كامل ، قم بزيارة موقع الويب

Notice

CE This product complies with the radio interference requirements of the European Community.

Declaration of Conformity

Hereby, Anker Innovations Limited, declares that this device is in compliance with the essential requirements and other relevant provisions of Directive 2014/53/EU. For the Declaration of Conformity, visit the Web site www.SeeNebula.com.

RF exposure information: The Maximum Permissible Exposure (MPE) level has been calculated based on a distance of d=20 cm between the device and the human body. To maintain compliance with RF exposure requirements, use products that maintain a 20cm distance between the device and human body.

CAUTION RISK OF EXPLOSION IF BATTERY IS REPLACED BY AN INCORRECT TYPE. DISPOSE OF USED BATTERIES ACCORDING TO THE INSTRUCTIONS

Wifi Operating Frequency Range: 2412~2472 MHz (2.4G); 5150~5250 MHz, 5725~5850 MHz (5G)

Wifi Max Output Power: 16.86 dBm (2.4G); 15.52 dBm (5G)

BT Operating Frequency Range: 2402~2480 MHz; BT Max Output Power: 9.68 dBm

5150~5250 MHz can be used indoor only.

Warning: Changes or modifications not expressly approved by the party responsible for compliance could void the user's authority to operate the equipment.

Note: This equipment has been tested and found to comply with the limits for a Class B digital device, pursuant to Part 15 of the FCC Rules. These limits are designed to provide reasonable protection against harmful interference in a residential installation.

This equipment generates, uses and can radiate radio frequency energy and, if not installed and used in accordance with the instruction manual, may cause harmful interference to radio communications. However, there is no guarantee that interference will not occur in a particular installation. If this equipment does cause harmful interference to radio or television reception, which can be determined by turning the equipment off and on, the user is encouraged to try to correct the interference by one or more of the following measures:

- Reorient or relocate the receiving antenna.
- Increase the separation between equipment and receiver.
- Connect the equipment into an outlet on a circuit different from that to which the receiver is connected.
- Consult the dealer or an experienced radio/TV technician for help.

RF Exposure Information(SAR)

This equipment complies with FCC radiation exposure limits set forth for an uncontrolled environment. This equipment should be installed and operated with a minimum distance of 20cm between the radiator and your body.

NEBULA

For FAQs and more information, please visit:

www.SeeNebula.com

✉ support@SeeNebula.com

+1 (800) 988 7973 (US) Mon-Fri 9:00am - 5:00pm (PT)

+44 (0) 1604 936200 (UK) Mon-Fri 6:00 - 11:00 (GMT)

+49 (0) 69 9579 7960 (DE) Mo-Fr 6:00 - 11:00

+81 03 4455 7823 (日本) 月 - 金 9:00 - 17:00

©Anker Innovations Limited. All rights reserved. NEBULA and the NEBULA logo are trademarks of Anker Innovations Limited, registered in the United States and other countries.

Model: D2410
51005001725 V01