

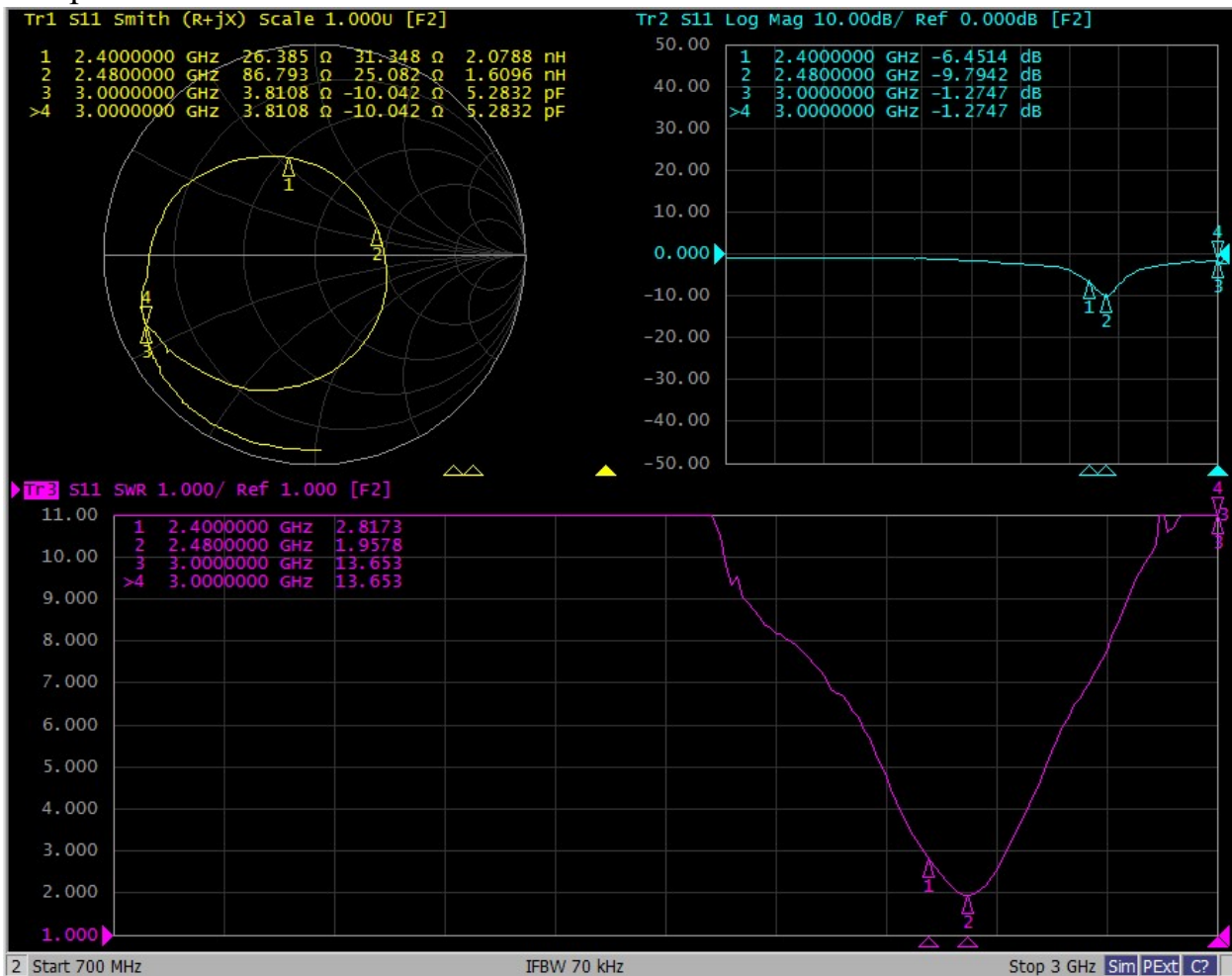


I: The report of passive data



Angilent E5071C

S11 parameter:

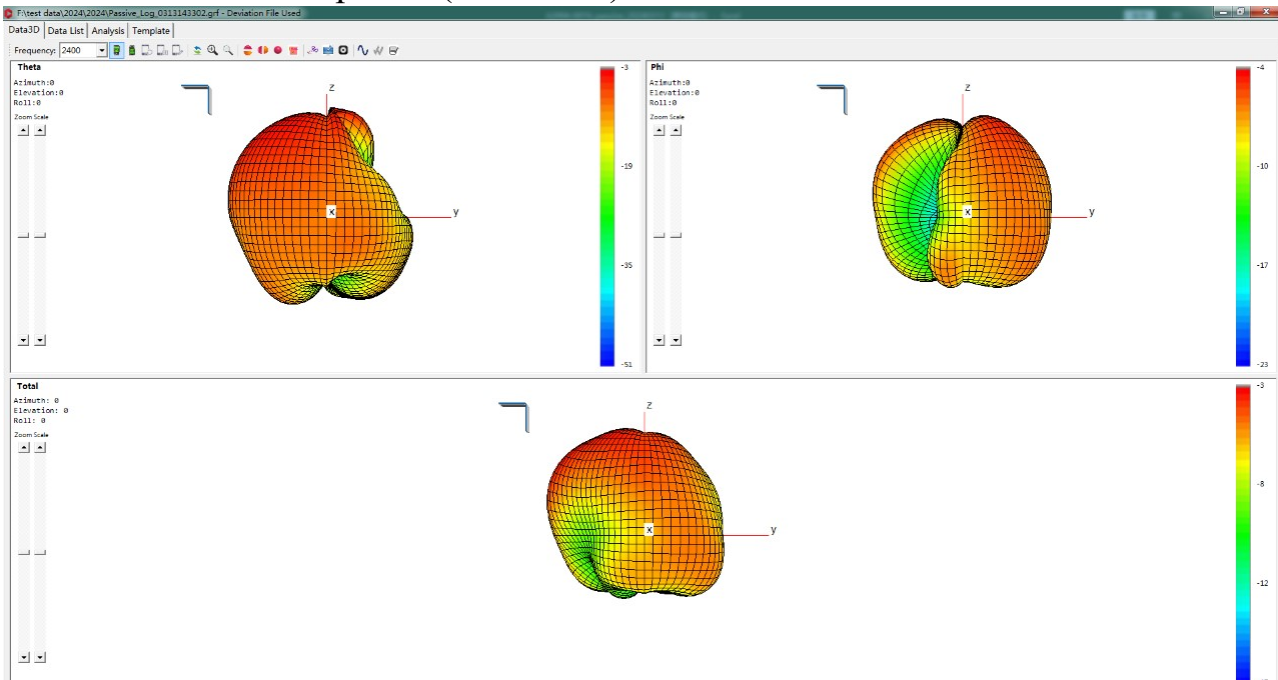




Efficiency:

R			
Frequency (MHz)	Efficiency	Efficiency (dB)	Gain (dBi)
2400	23%	-6.4	-3.4
2410	24%	-6.2	-3.1
2420	25%	-6.1	-2.9
2430	24%	-6.2	-3.0
2440	23%	-6.3	-3.1
2450	24%	-6.3	-3.0
2460	23%	-6.4	-3.1
2470	24%	-6.3	-3.0
2480	24%	-6.1	-2.9
Average value	23.7%	-6.3	-3.1

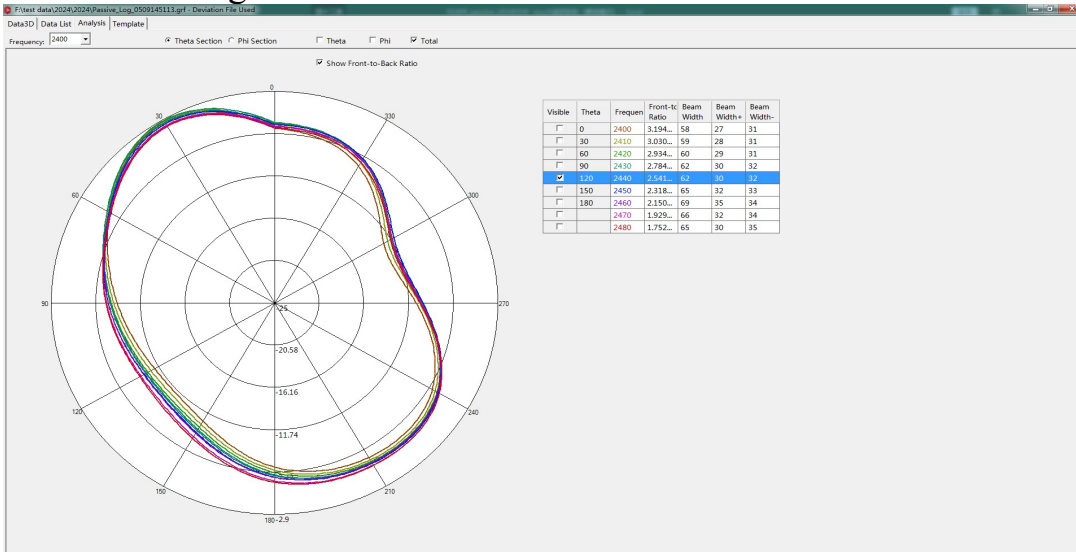
3D Antenna radiation pattern(Unit: dBi):



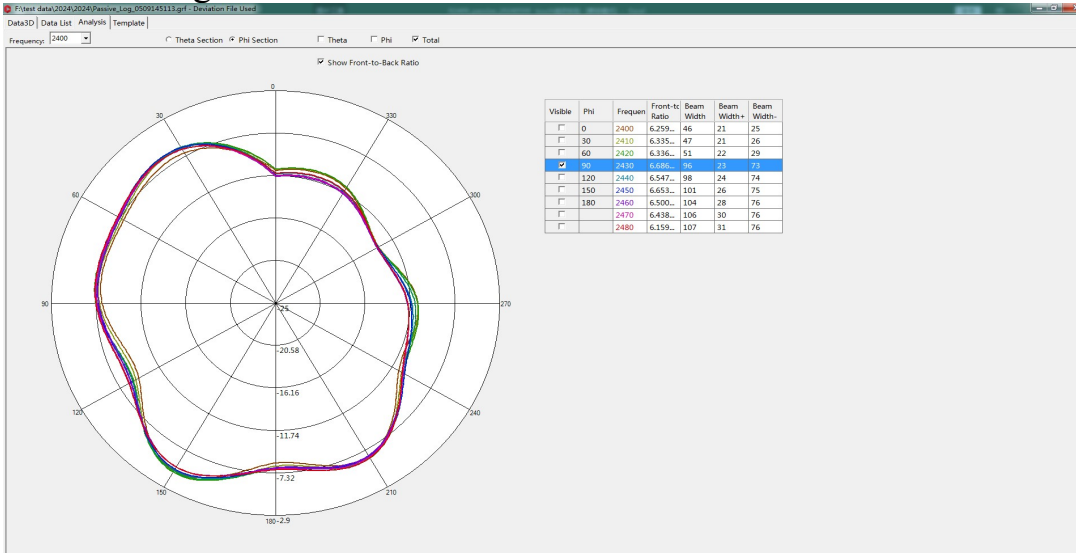


Antenna radiation pattern(Unit: dBi):

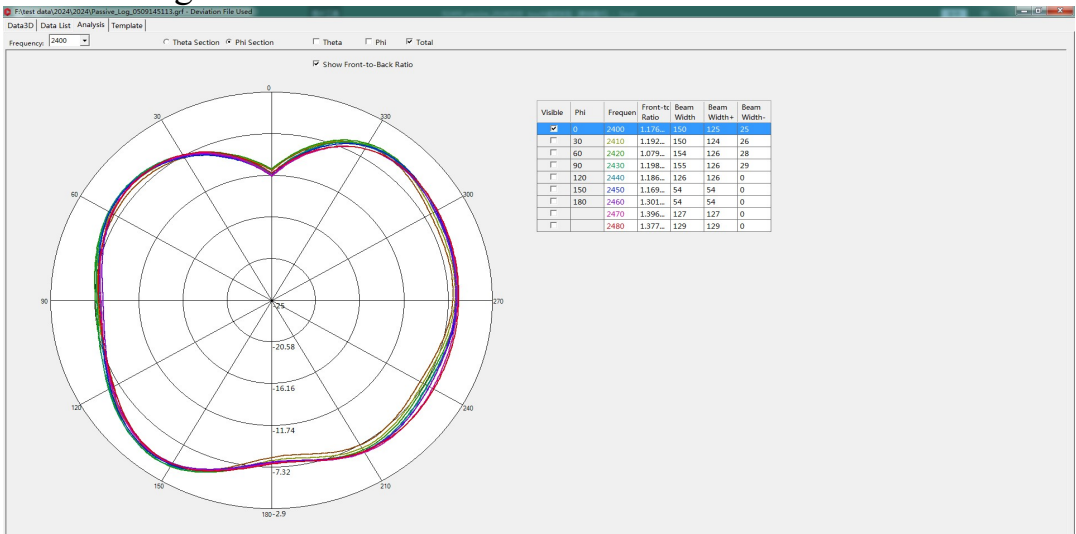
Theta=90.00deg



Phi=90.00deg



Phi=0.00deg





II: 3D Active test report of antenna

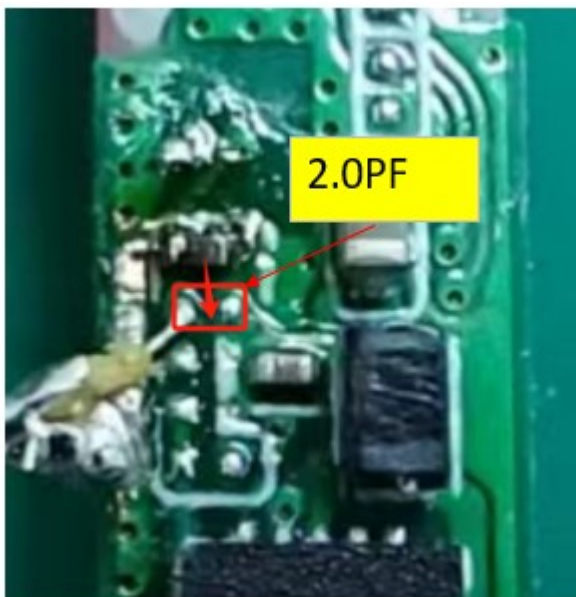
Free space	Channel	TRP (dBm)	TIS (dBm)
R	CH 0	-1.1	-84.9
	CH 39	-0.5	-85.3
	CH 78	0.2	-85.4

Headform	Channel	TRP (dBm)	TIS (dBm)
R	CH 0	-2.4	-82.5
	CH 39	-0.7	-84.8
	CH 78	-0.4	-84.6



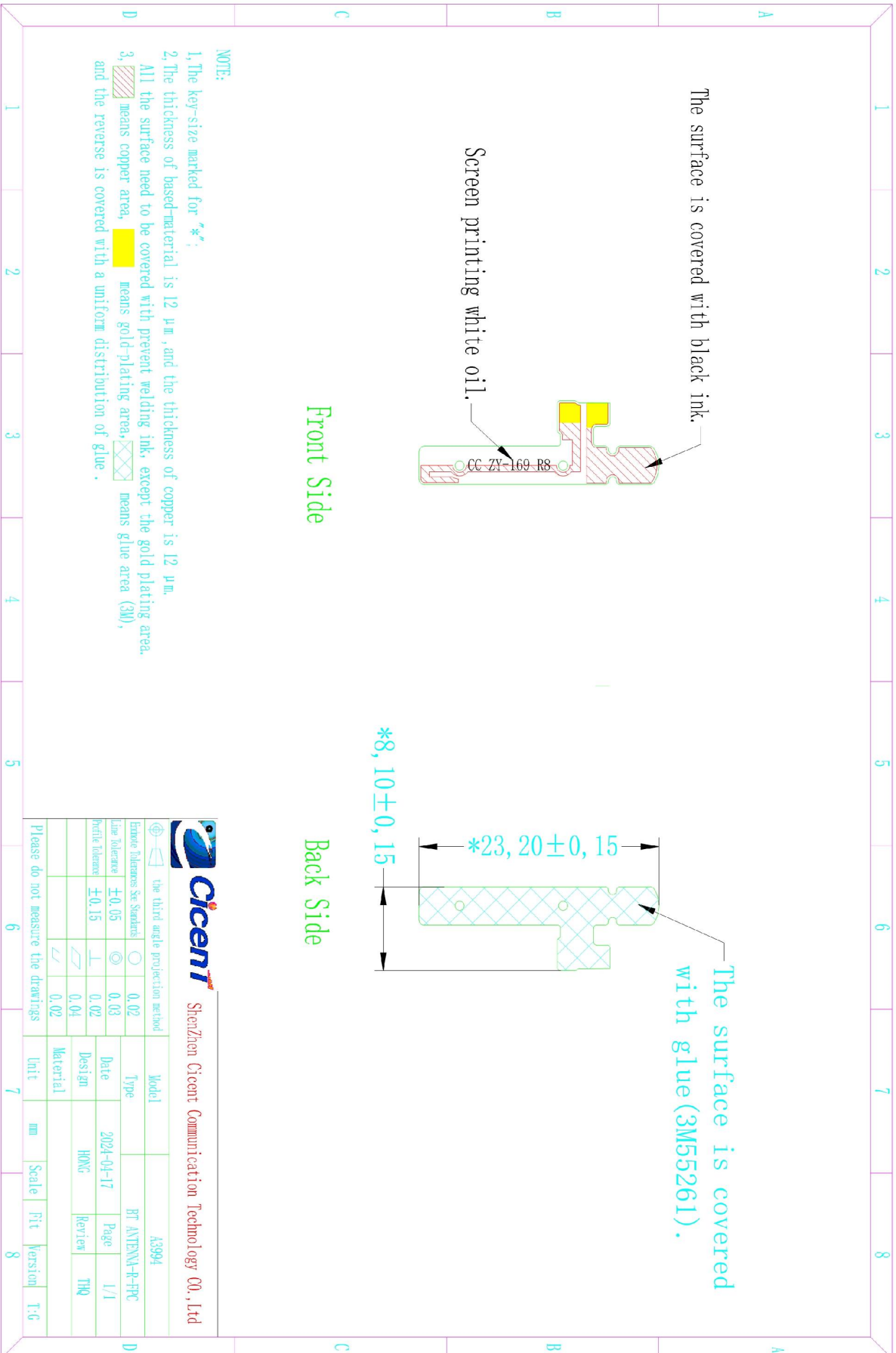
OTA Standard Chamber

III: Matching circuit





IV: Structure file:



cicent

Shenzhen Cicent Communication Technology CO., Ltd

the third angle projection method

Extreme flatness	See Standards								
Line tolerance	± 0.05		0.02	Type		Model	A3394		
Profile flatness	± 0.15		0.03	Date	2024-04-17	BT ANTENNA-R-FPC		Page	1/1
			0.02	Design	HONG	Review		THQ	
			0.04	Material					
			0.02	Unit	mm	Scale	Fit	Version	T:G

Please do not measure the drawings