

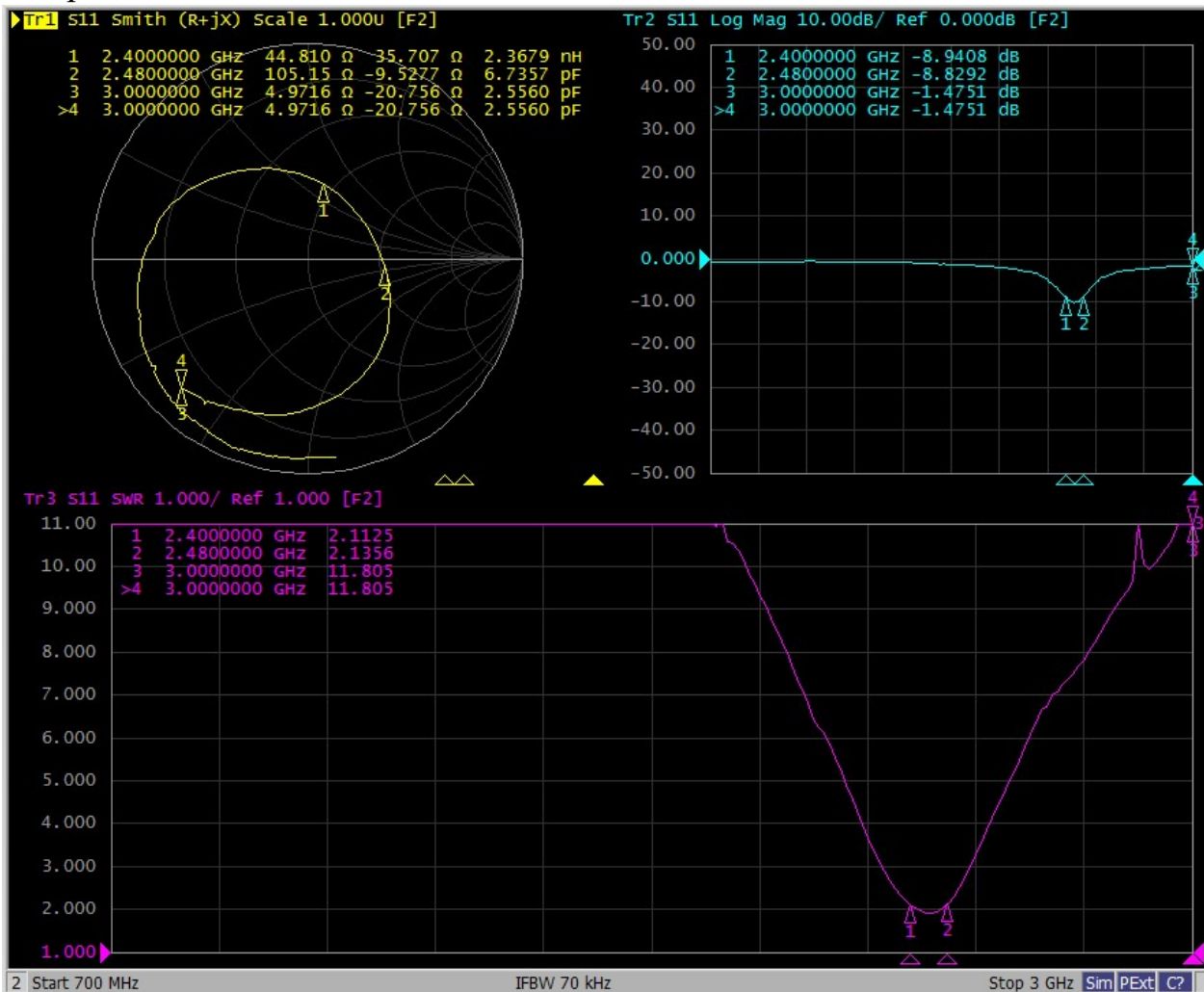


I: The report of passive data



Agilent E5071C

S11 parameter:

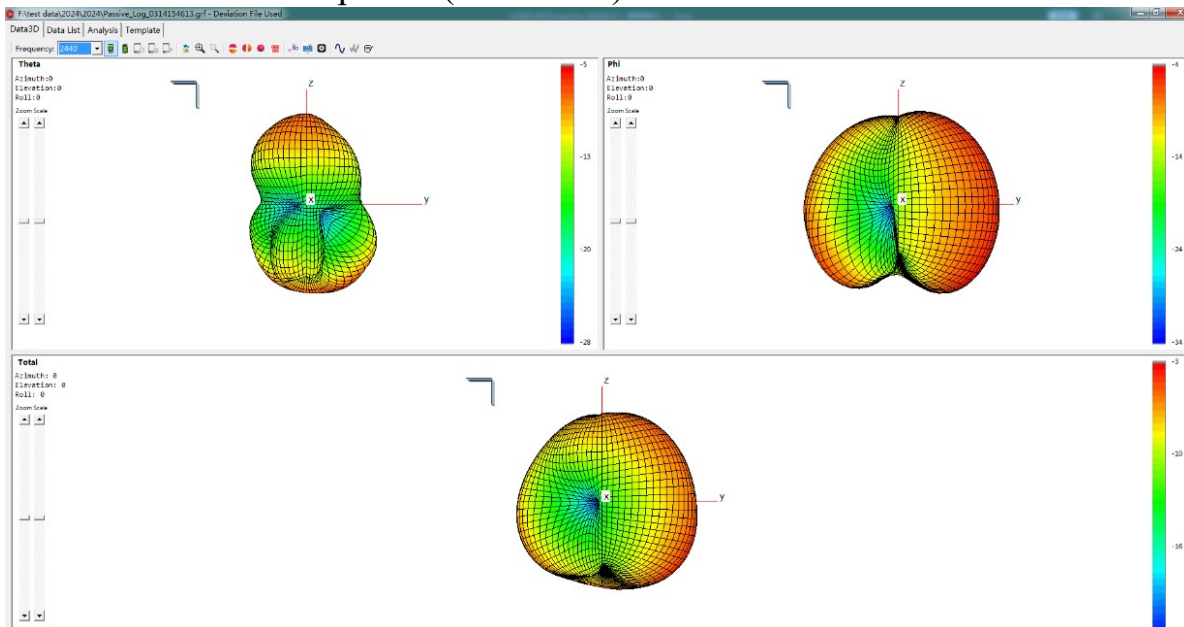




Efficiency:

L			
Frequency (MHz)	Efficiency	Efficiency (dB)	Gain (dBi)
2400	21%	-6.70	-3.44
2410	22%	-6.63	-3.37
2420	22%	-6.64	-3.36
2430	21%	-6.82	-3.52
2440	20%	-7.05	-3.68
2450	19%	-7.15	-3.70
2460	18%	-7.46	-3.87
2470	18%	-7.49	-3.75
2480	17%	-7.58	-3.75
Average value	19.76%	-7.06	-3.60

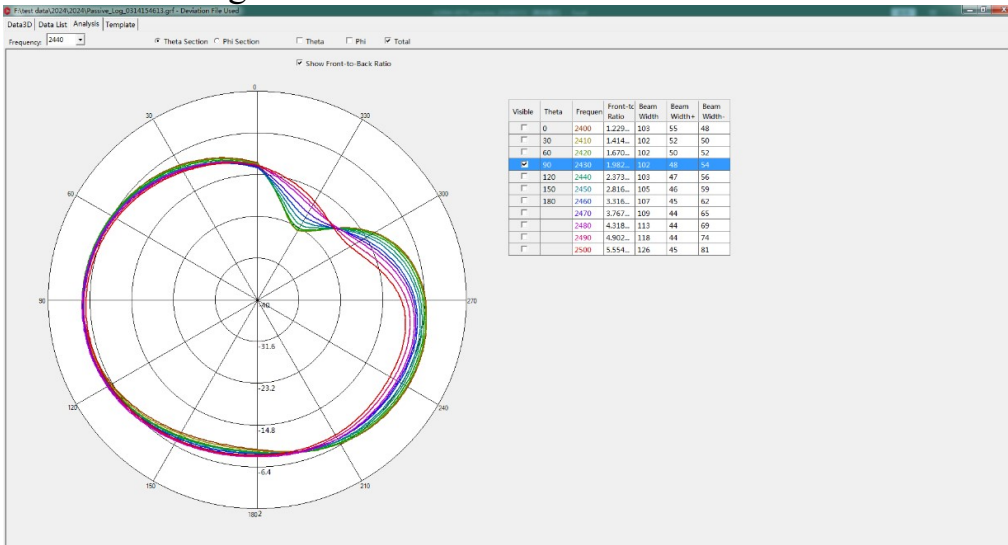
3D Antenna radiation pattern(Unit: dBi):



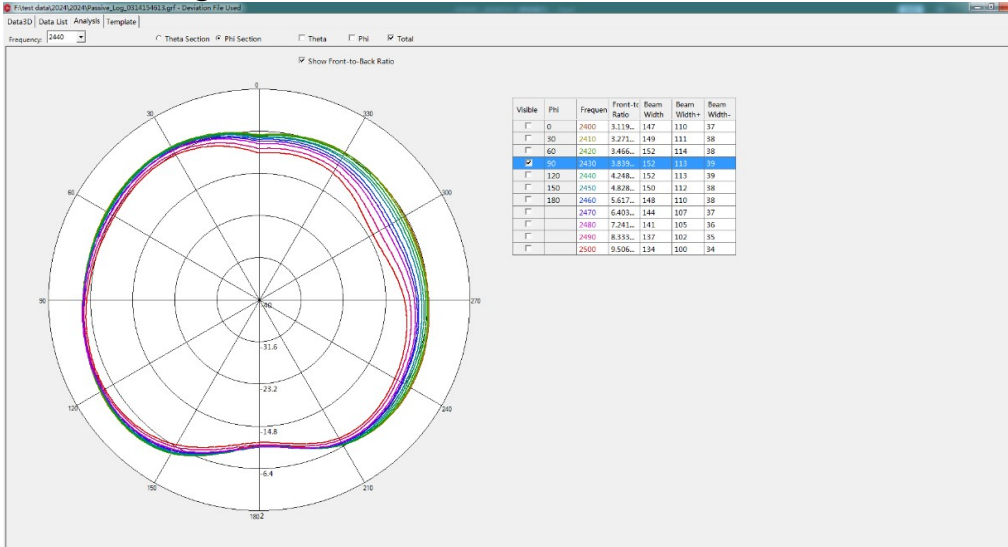


Antenna radiation pattern(Unit: dBi):

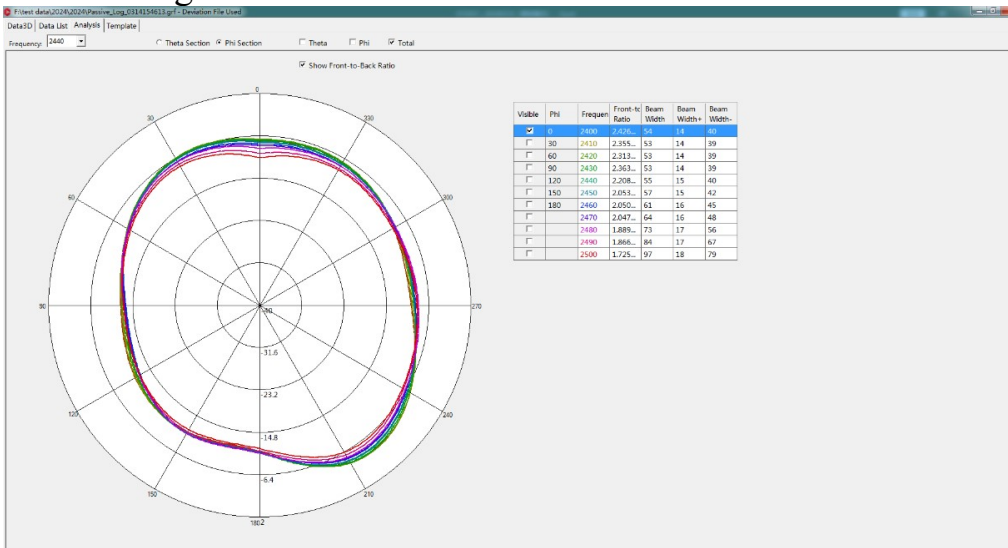
Theta=90.00deg



Phi=90.00deg



Phi=0.00deg





II: 3D Active test report of antenna

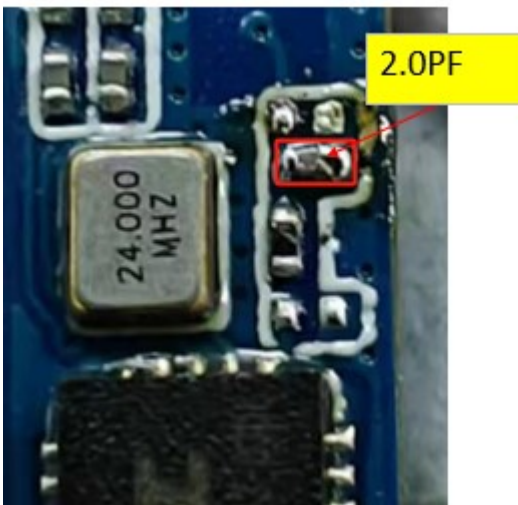
Free space	Channel	TRP (dBm)	TIS(dBm)
L	CH 0	-2.1	-82.9
	CH 39	0.2	-84.6
	CH 78	1.6	-85.9

Headform	Channel	TRP(dBm)	TIS (dBm)
L	CH 0	-0.5	-83.5
	CH 39	0.4	-84.9
	CH 78	-0.1	-84.5



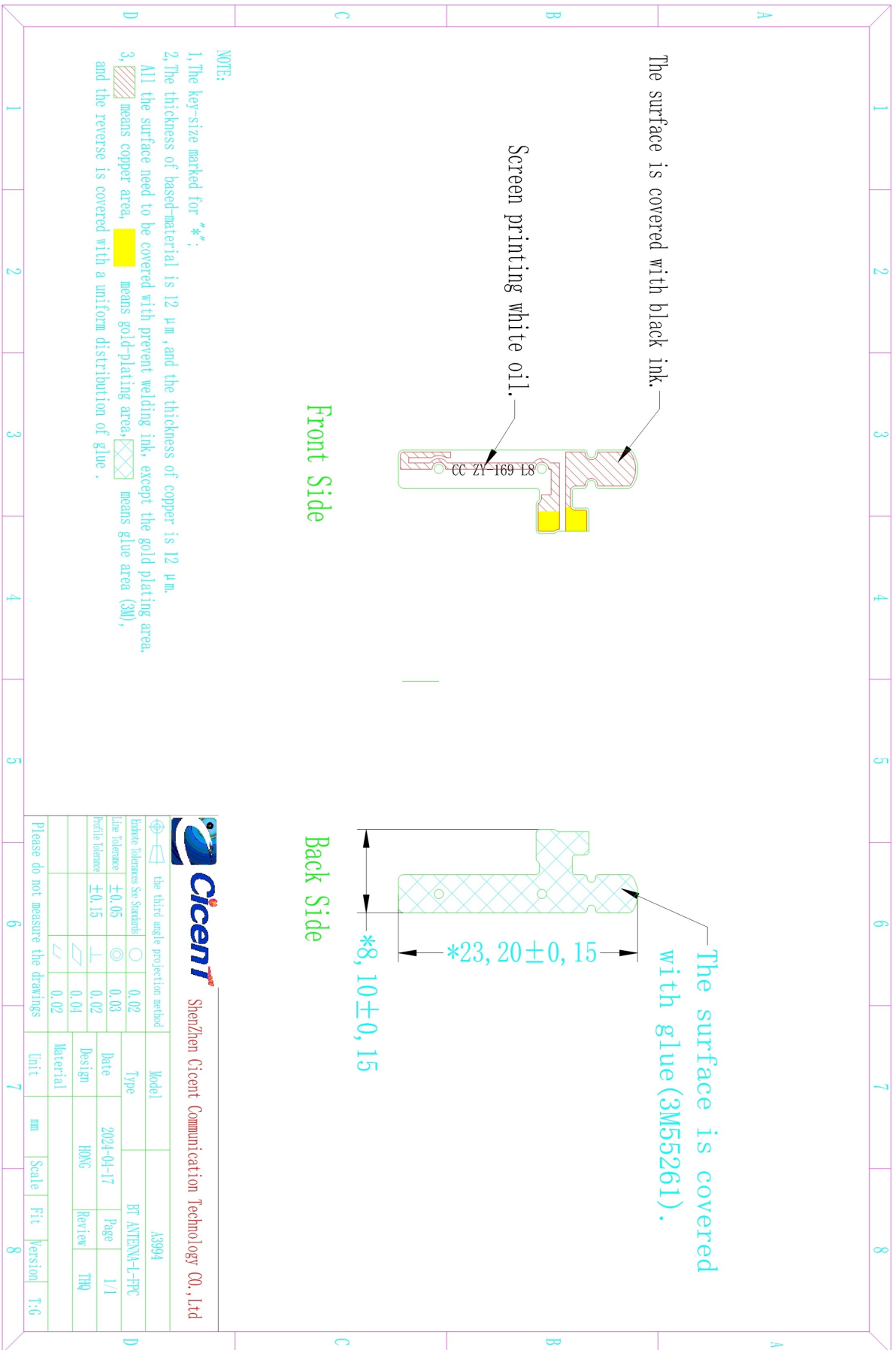
OTA Standard Chamber

III: Matching circuit





IV: Structure file:



NOTE:

- 1, The key-size marked for “*”;
- 2, The thickness of based-material is 12 μm, and the thickness of copper is 12 μm.
- 3, All the surface need to be covered with prevent welding ink, except the gold plating area.

Legend:

- ▨ means copper area,
- means gold-plating area,
- ▤ means glue area (3M),
- ▦ means glue area (3M),
- ▧ means glue area (3M),
- ▨ means glue area (3M),

and the reverse is covered with a uniform distribution of glue.

 the third angle projection method		 Shenzhen Cicent Communication Technology CO., Ltd	
Feature Tolerances See Standards	○	0.02	Model
Line Tolerances	⊙	0.03	Type
Profile Tolerances	⊥	0.02	Date
	∠	0.04	Design
	∠	0.02	Material
Please do not measure the drawings			
		Unit	mm
		Scale	1:1
		Fit	T:G
		Version	T:G