

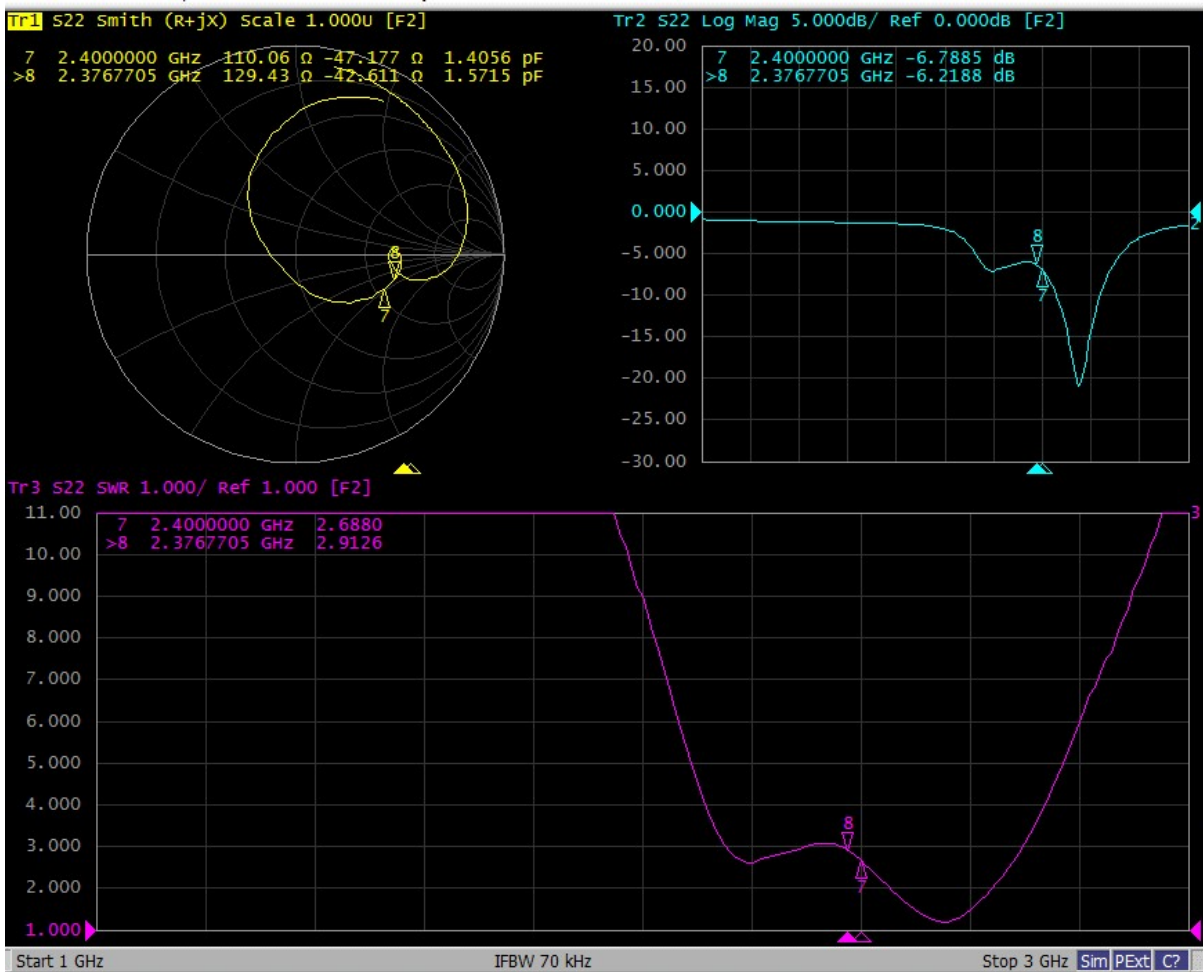


I: The report of passive data



Angilent E5071C

Left antenna VSWR(S11) parameter

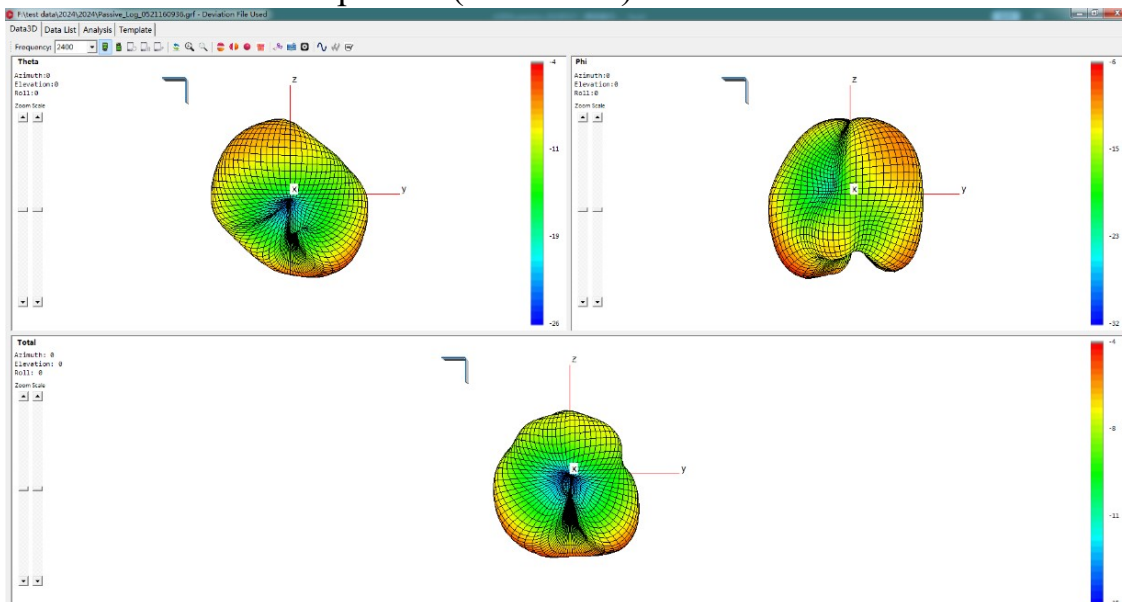




Passive efficiency and gain of left ear antenna

L			
Frequency (MHz)	Gain (dBi)	Efficiency (dB)	Efficiency(%)
2400	-4.09	-8.08	15.54
2410	-3.93	-7.93	16.09
2420	-3.83	-7.81	16.55
2430	-3.77	-7.86	16.38
2440	-3.84	-7.96	16.00
2450	-3.71	-7.79	16.62
2460	-3.75	-7.81	16.57
2470	-3.47	-7.51	17.76
2480	-3.19	-7.20	19.05
2490	-3.27	-7.32	18.53
2500	-3.35	-7.37	18.30
Average value	-3.66	-7.70	17.04

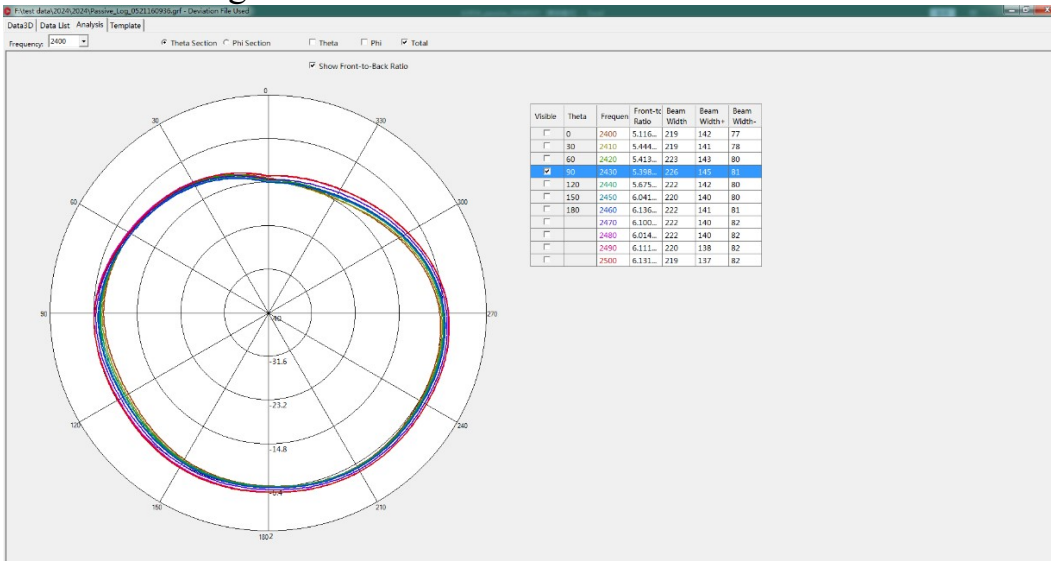
Antenna radiation 3D pattern (Unit: dBi)



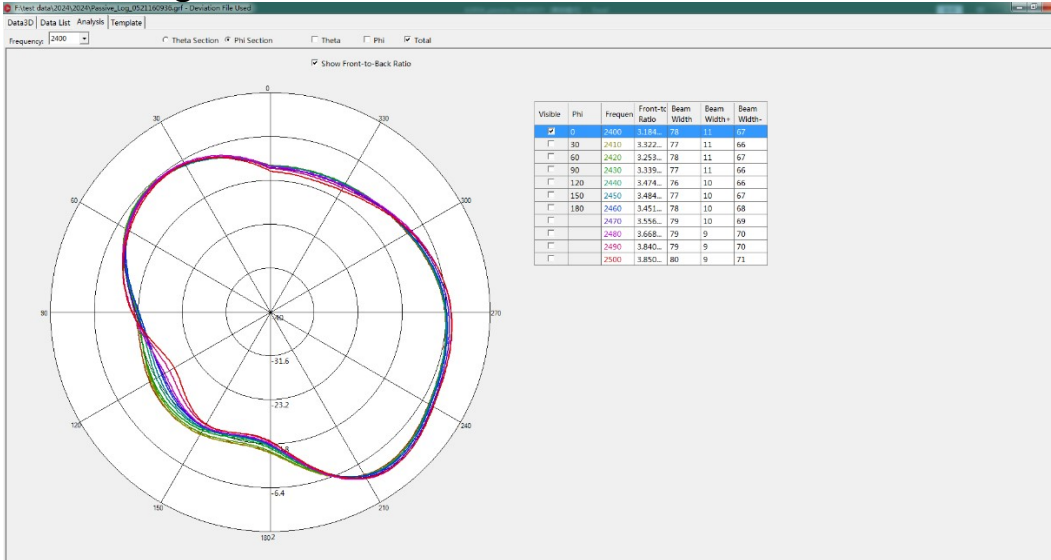


Antenna radiation 2D pattern(Unit: dBi)

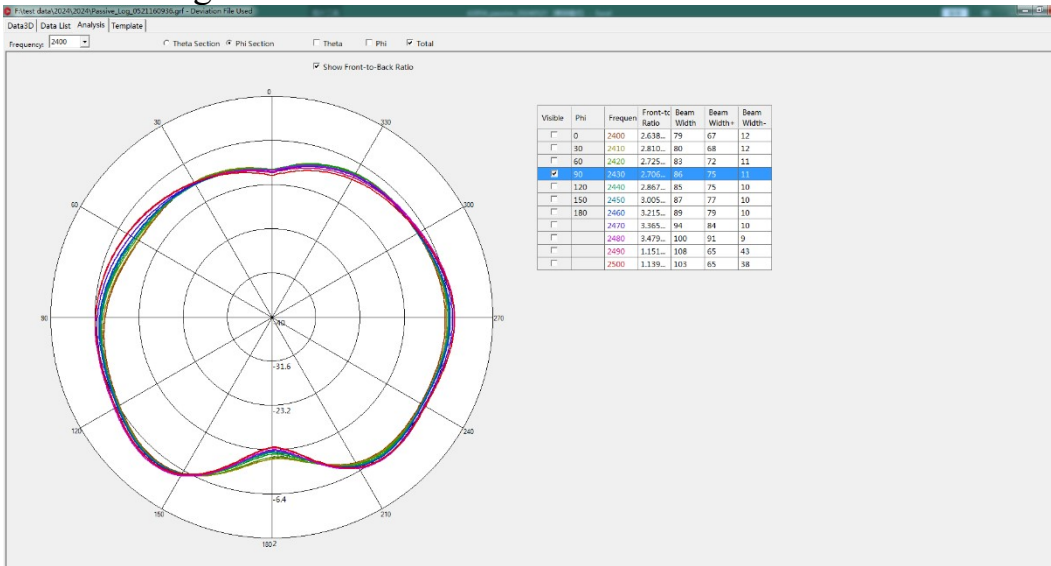
Theta=90.00deg



Phi=0.00deg



Phi=90.00deg





II: 3D Active test report of antenna

Free	Channel	TRP (dBm)	TIS (dBm)
BT	CH 0	6.4	-92.3
	CH 39	6.5	-92.8
	CH 78	6.6	-91.9

Headform	Channel	TRP (dBm)	TIS (dBm)
BT	CH 0	1.2	-88.5
	CH 39	2.2	-88.8
	CH 78	2.6	-87.6

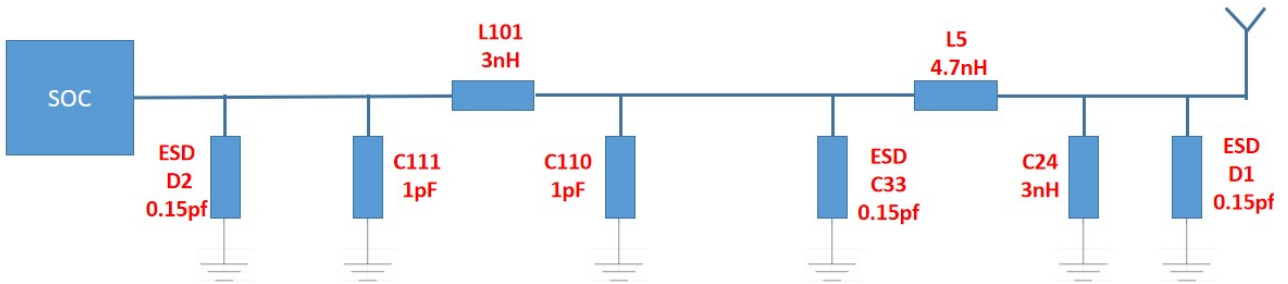
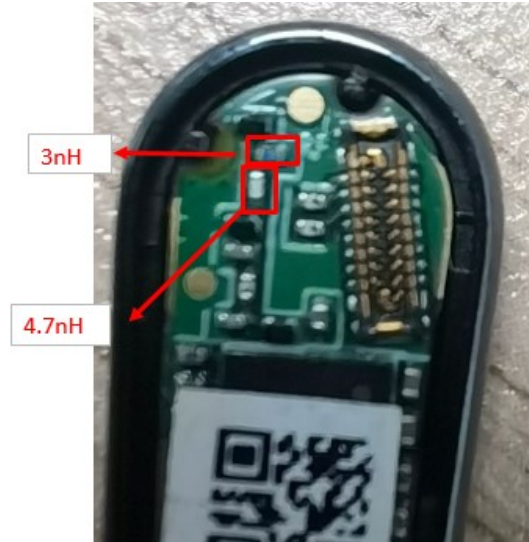


OTA Standard Chamber



III: Matching circuit

Element	Value
C24	3nH
L5	4.7nH
C33	ESD





IV: Structure file

