

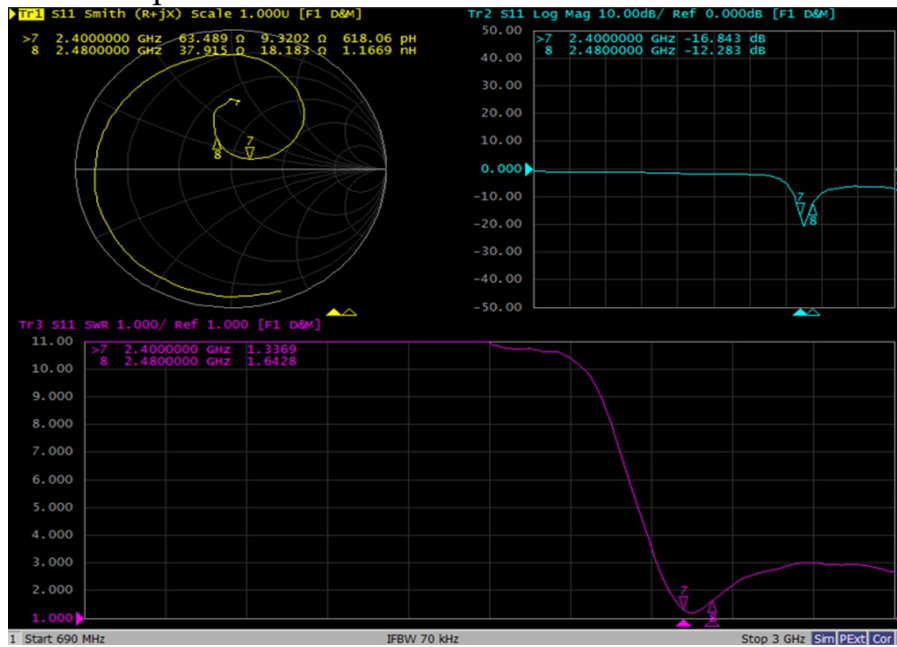


I: The report of passive data



Angilent E5071C

VSWR parameter (Left) :



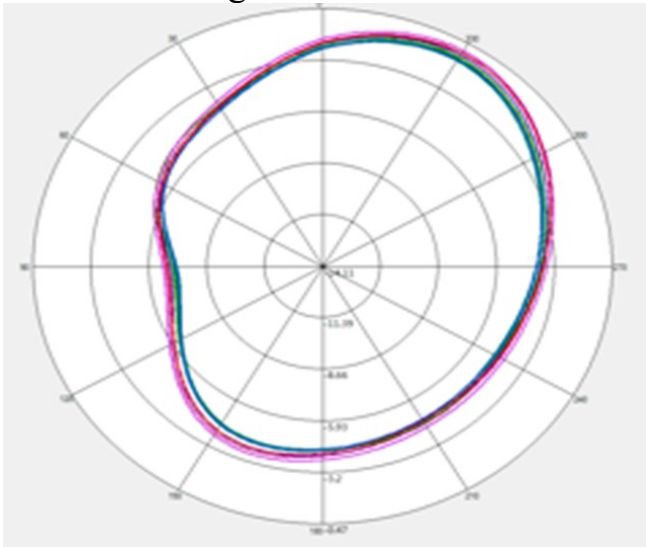
Efficiency:

L			
Frequency (MHz)	Efficiency	Efficiency (dB)	Gain (dBi)
2400	37.2%	-4.3	-1.0
2410	36.9%	-4.3	-1.0
2420	36.2%	-4.4	-1.1
2430	37.6%	-4.2	-0.9
2440	37.1%	-4.3	-1.0
2450	39.4%	-4.0	-0.7
2460	41.2%	-3.8	-0.5
2470	39.4%	-4.0	-0.8
2480	38.8%	-4.1	-0.9
Average value	38.20%	-4.18	-0.88

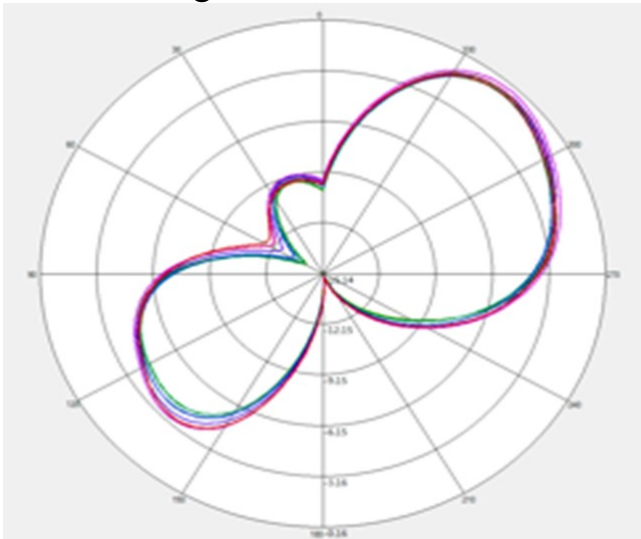


Antenna radiation pattern:

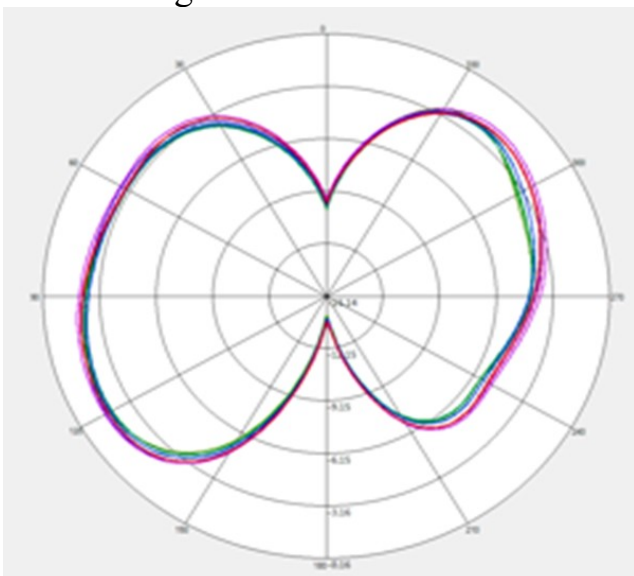
Theta=90.00deg



Phi=90.00deg

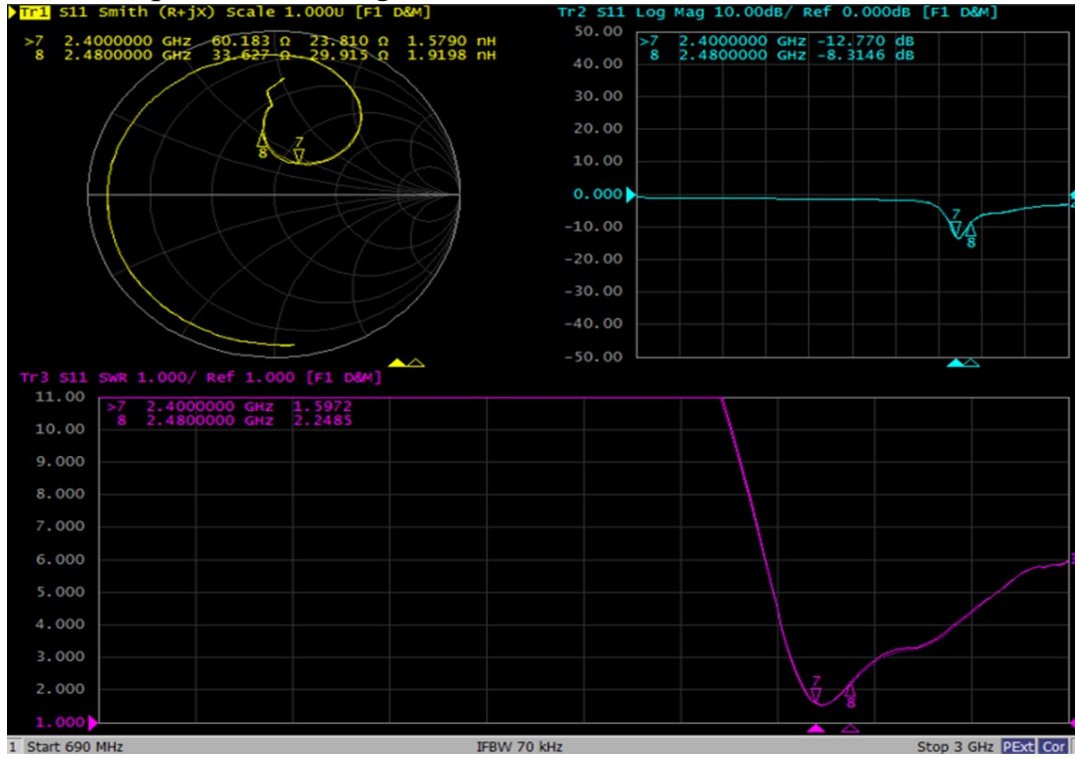


Phi=0.00deg





VSWR parameter (Right) :



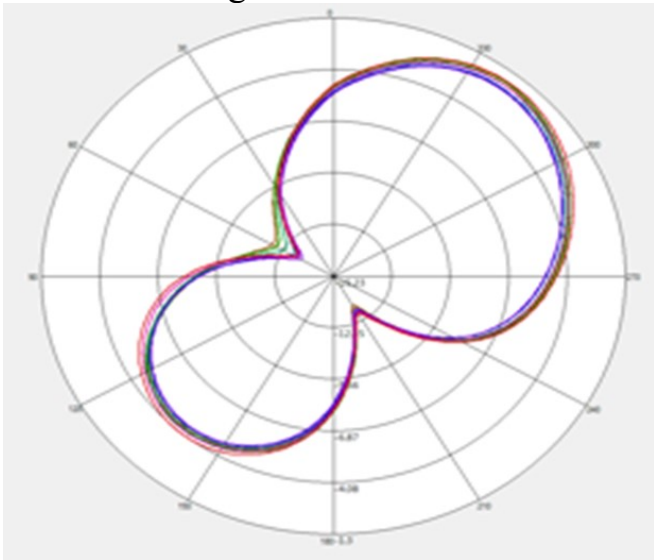
Efficiency:

R			
Frequency (MHz)	Efficiency	Efficiency (dB)	Gain (dBi)
2400	37.2%	-4.3	-1.0
2410	37.2%	-4.3	-0.9
2420	37.4%	-4.3	-0.9
2430	36.2%	-4.4	-1.0
2440	35.0%	-4.6	-1.2
2450	35.2%	-4.5	-1.1
2460	34.2%	-4.7	-1.3
2470	35.7%	-4.5	-1.1
2480	36.5%	-4.4	-1.1
Average value	36.06%	-4.43	-1.09

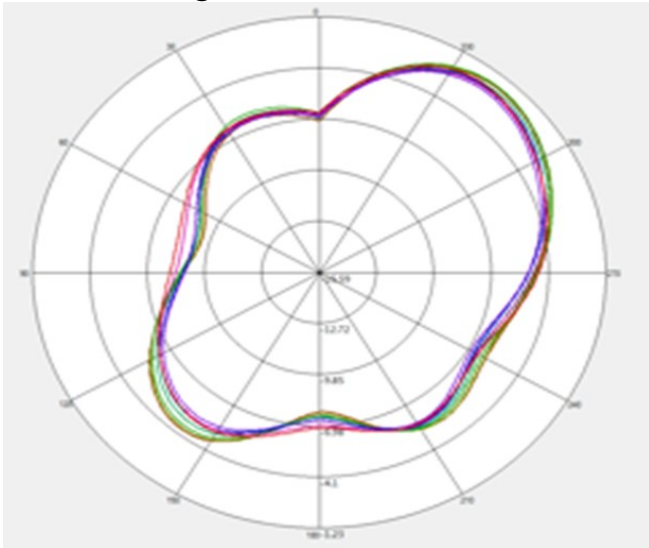


Antenna radiation pattern:

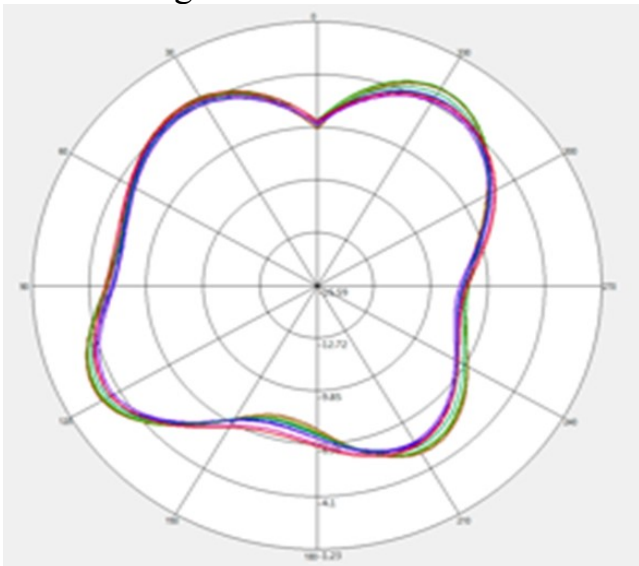
Theta=90.00deg



Phi=90.00deg



Phi=0.00deg





II: 3D Active test report of antenna

free space	Channel	TRP (dBm)	TIS (dBm)
L	CH 0	10.5	-93.8
	CH 39	10.5	-94.4
	CH 78	10.2	-94.9

free space	Channel	TRP (dBm)	TIS (dBm)
R	CH 0	11.7	-93.3
	CH 39	11.7	-94.5
	CH 78	11.4	-94.6

Headform	Channel	TRP (dBm)	TIS (dBm)
L	CH 0	3.6	-87.2
	CH 39	3.8	-87.3
	CH 78	3.8	-87.2

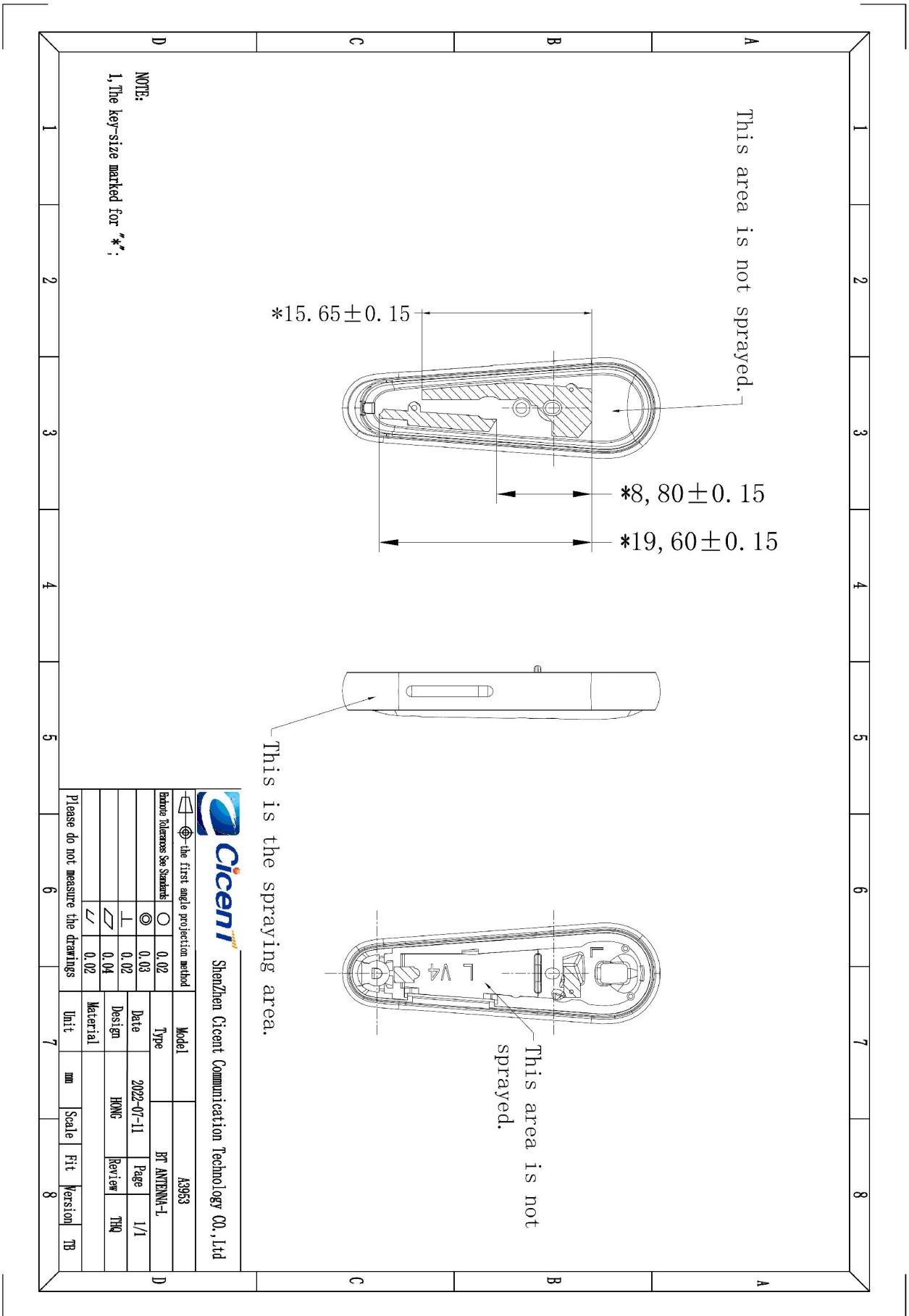
Headform	Channel	TRP (dBm)	TIS (dBm)
R	CH 0	4.0	-87.1
	CH 39	4.3	-87.4
	CH 78	4.5	-87.5

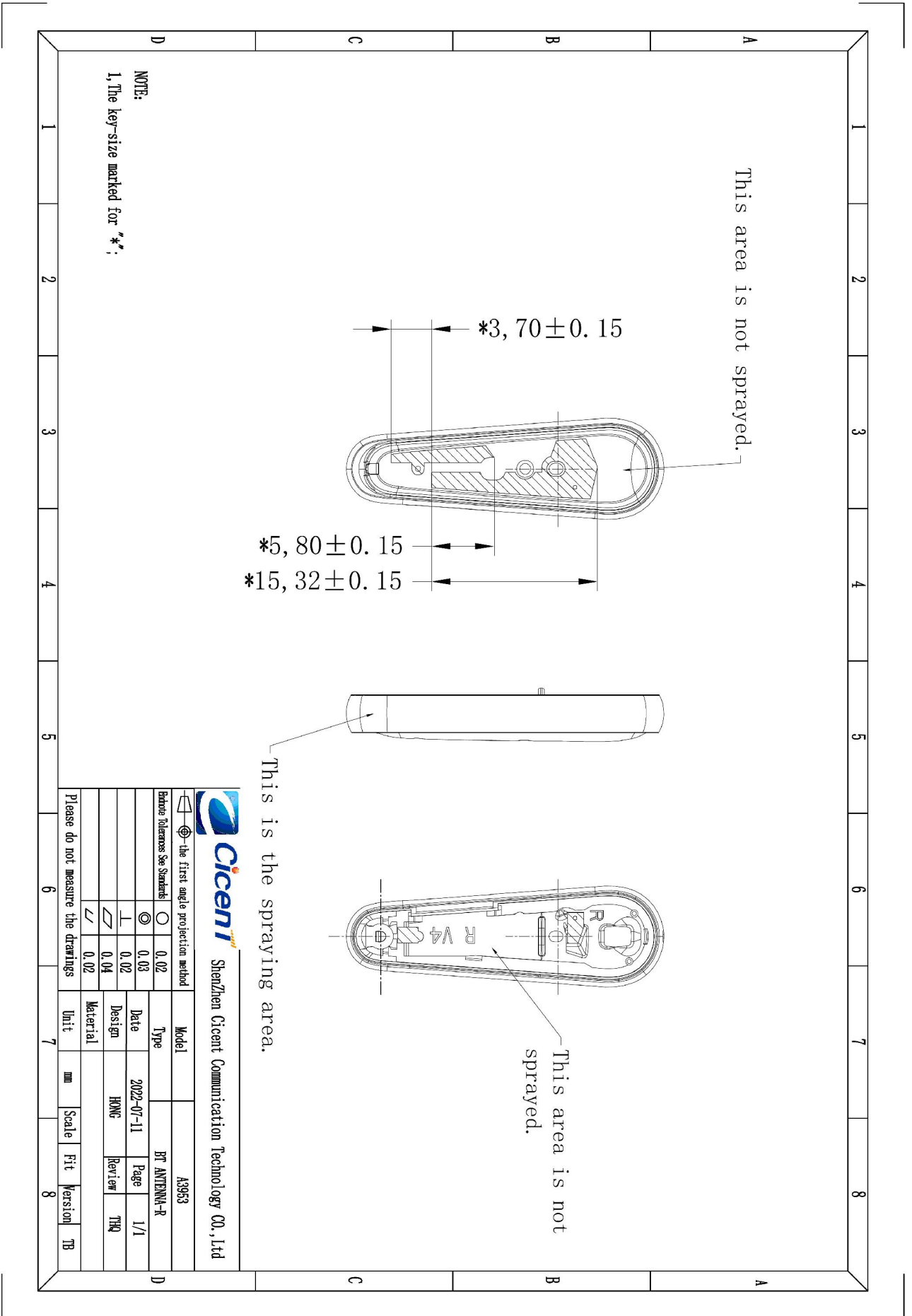


OTA Standard Chamber



IV: Structure file:





Shenzhen Cicent Communication Technology CO., Ltd

the first angle projection method

Factor	tolerance	See Standards	Model	A3953
Type	0.02	0.03	PT ANTENNA-R	
Date	2022-07-11	Page	1/1	
Design	HONG	Review	TRQ	
Material				
Unit	mm	Scale	Fit	Version
				TB

Please do not measure the drawings