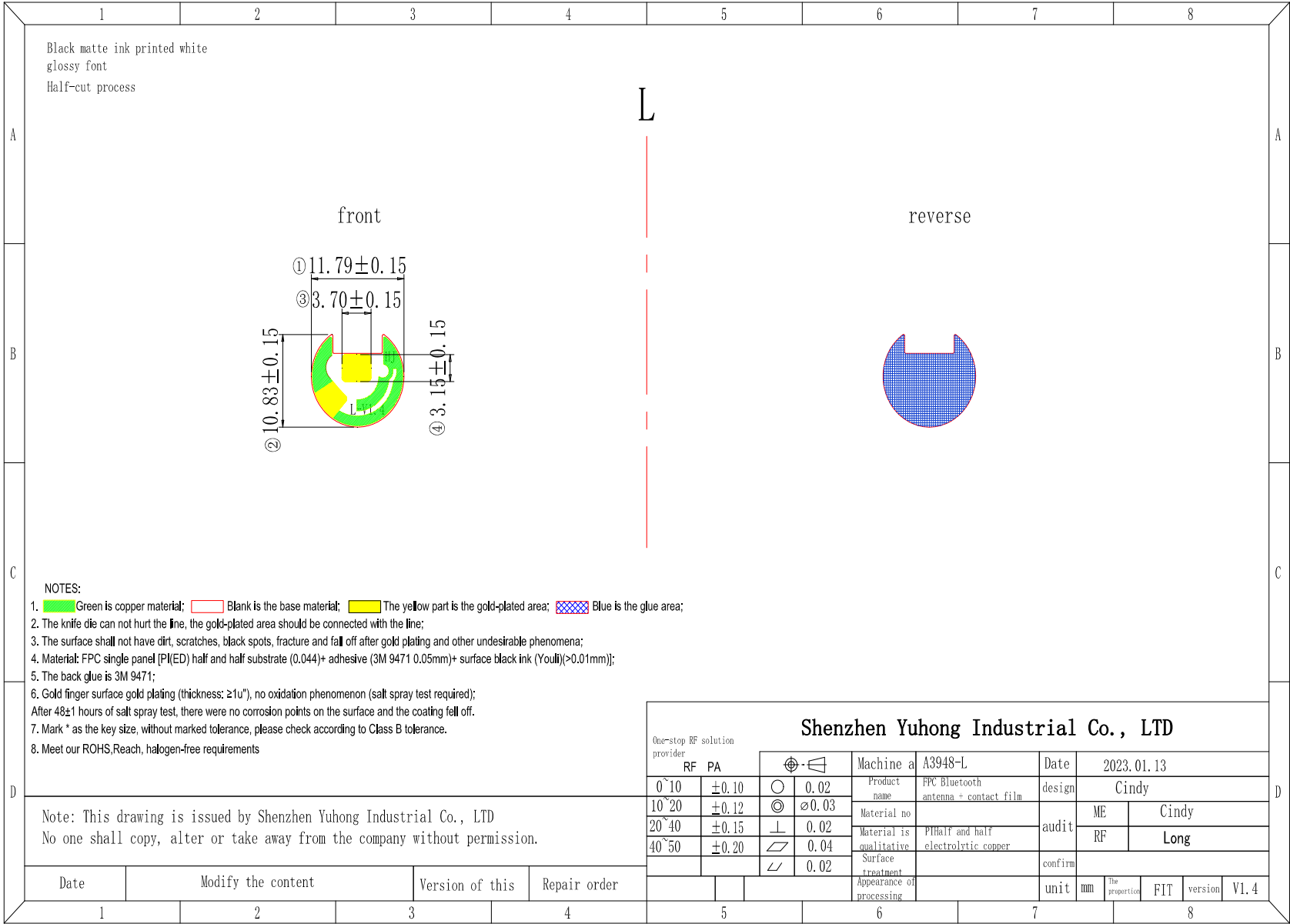
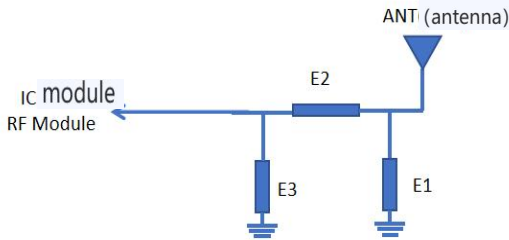


2、Product drawing



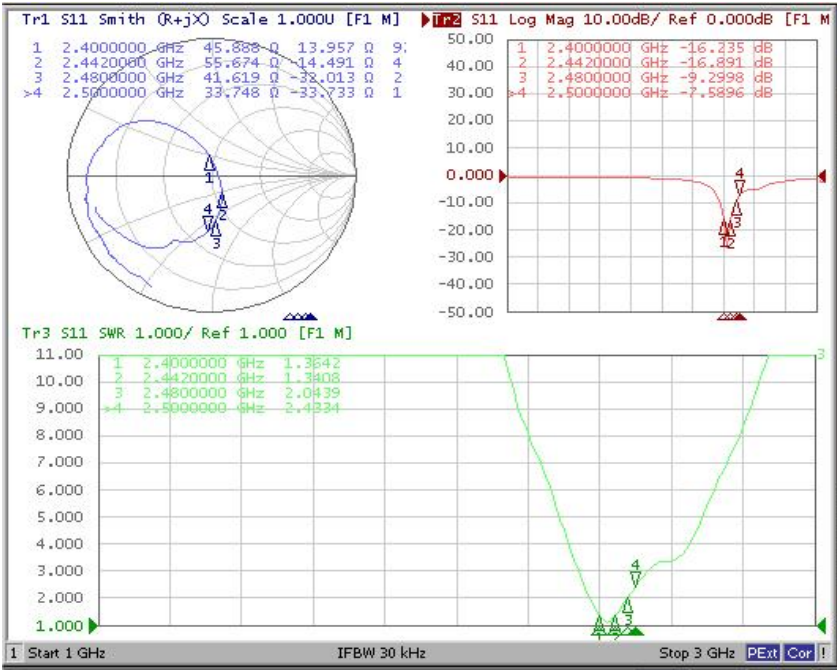
3、 Specification of electrical and mechanical properties

3.1、 Match the circuit diagram



L	
Main Antenna	
Element	
E1 (0201)	N/A
E2 (0201)	0Ω
E3 (0201)	2.4PF

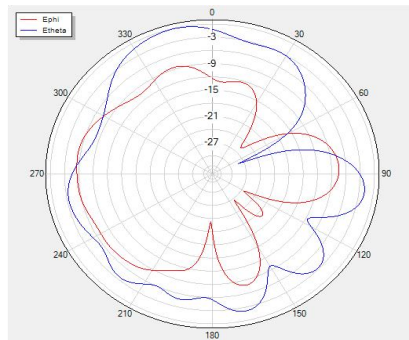
3.2. S11 parameter



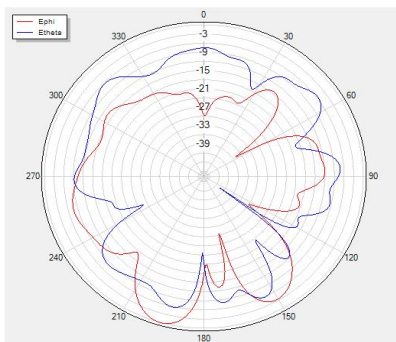
3.3 Passive efficiency

L				
	FS		Head&ear	
	gain(dBi)	efficiency (%)	gain(dBi)	efficiency (%)
2400	-1.65	25.24	-0.23	10.96
2410	-1.64	25.55	0.03	11.23
2420	-1.64	25.75	0.29	11.6
2430	-1.64	25.73	0.53	11.97
2440	-1.67	26.54	0.74	12.4
2450	-1.62	26.59	0.93	12.82
2460	-1.54	26.65	1.03	13.07
2470	-1.46	26.59	1.06	13.09
2480	-1.52	26.48	1.02	12.88
2490	-1.64	25.34	0.91	12.53
2500	-1.69	25.09	0.78	12.12

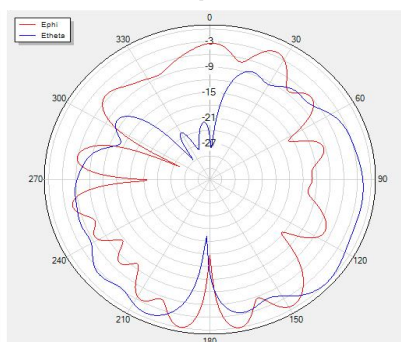
Theta=90 freq=2400MHz



Phi=90 freq=2400MHz



Phi=0 freq=2400MHz



3.4 Active data

L			
	channel	TRP (dbm)	TIS (dbm)
Free space	0	4.56	-88.96
	39	4.88	-89.69
	78	3.41	-88.96
	channel	TRP (dbm)	TIS (dbm)
Second generation head die	0	-3.32	-80.62
	39	-3.17	-81.58
	78	-4.08	-81.44

5. Environmental treatment



Horn wire length to do 20mm, twisted wire 4-5 laps after assembly



The length of the battery wire is 15mm, and the twisted wire is assembled after 3-4 turns