

2. FPC touch+antenna appearance

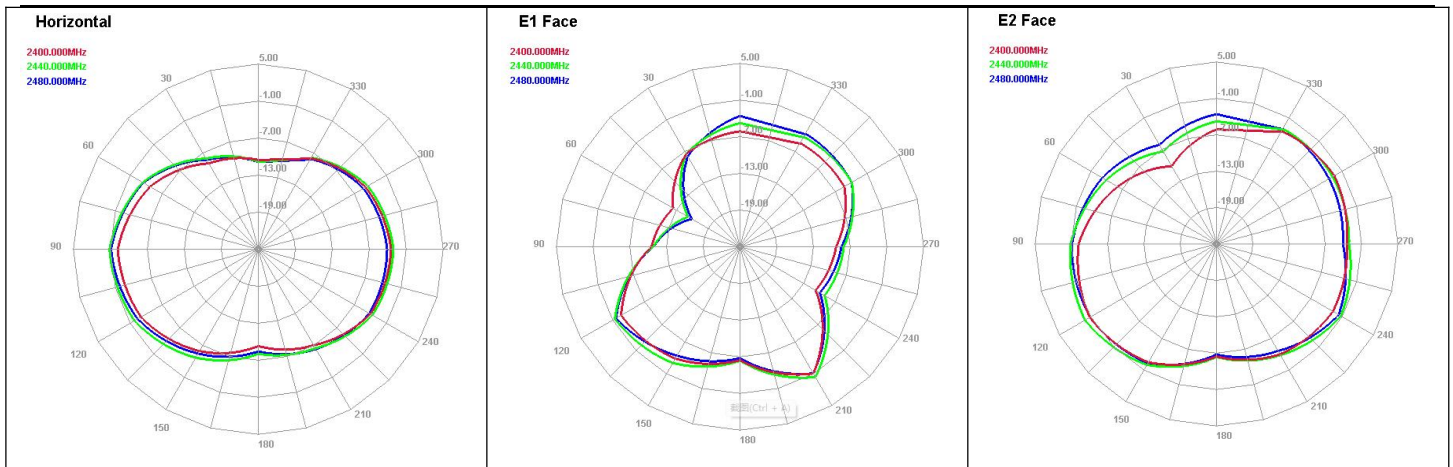


**3.3 Return loss**
**BT VSWR+ Return**

	Resonance point rang(MHz)	frequency point(MHz)/Maximum return loss(dB)		
			2400	2500
	2400-2500	VSWR	3.01	2.45
		Return loss	-6	-8

**3.4 无源效率**

Freq (MHz)	Effi (%)	Effi (dB)	Gain (dBi)
2400	35.77	-4.47	-0.62
2410	40.56	-3.92	-0.09
2420	41.71	-3.8	0.01
2430	43.99	-3.57	0.22
2440	43.81	-3.58	0.11
2450	42.14	-3.75	-0.17
2460	41.6	-3.81	-0.34
2470	41.46	-3.82	-0.3
2480	40.14	-3.96	-0.3
2490	39.07	-4.08	-0.31
2500	37.71	-4.24	-0.4



#### 4. Appearance structure

##### 4.1. FPC antenna material FPC

#### 5. Remarks

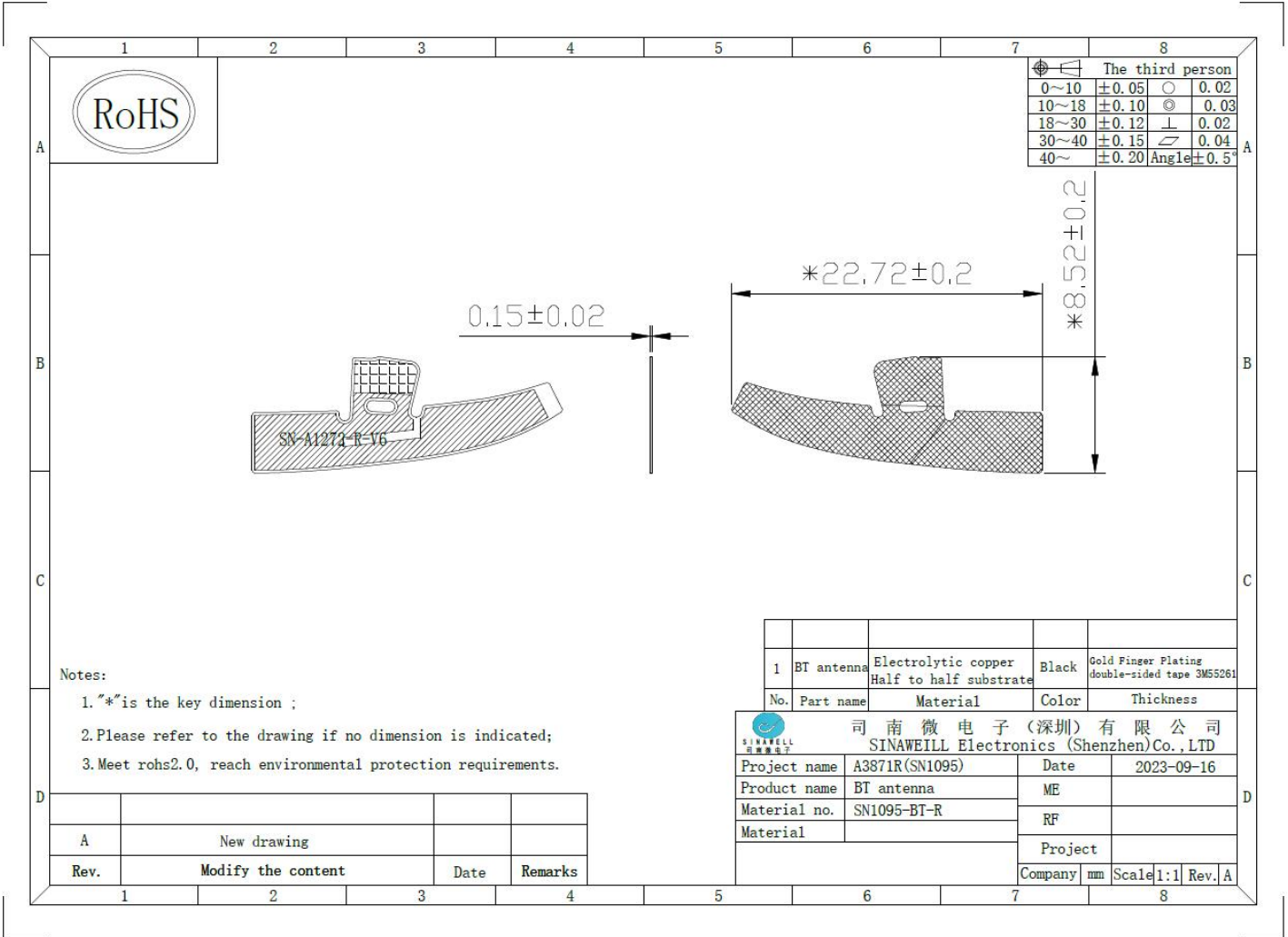
(Electrical Performance Test Report)

In the electrical performance test report, the 3D darkroom data provided for manufacturers,  
The following table format

Appendix 1: Structural Drawings

Appendix II (Electrical Performance Test Report)

**FPC structural drawings**



**Key size**

NO	measure(m m)	tolerance(m m)	remarks
1	22.72	±0.2	
2	8.52	±0.2	
3	0.1	±0.02	
4			
5			