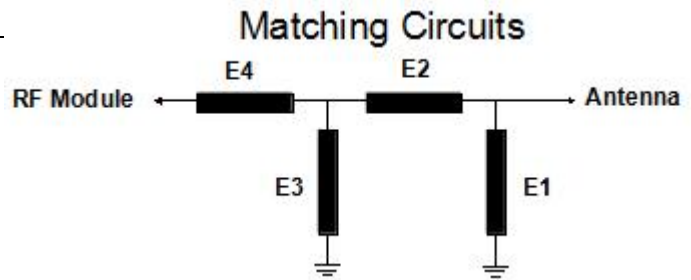


2. FPC antenna appearance



Element	Value
E1(0402)	1.8PF
E2(0402)	0 Ω
E3(0402)	NC
E4(0402)	0 Ω

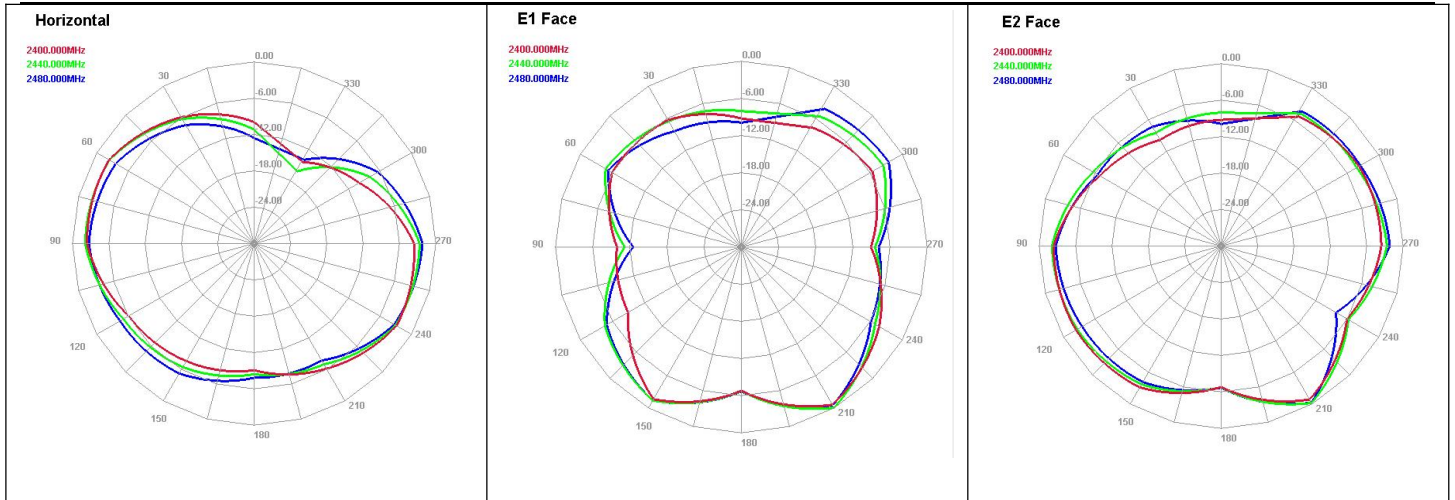


3.3. Return loss

BT VSWR+ Return

	Resonance point range(MHz)	frequency point(MHz)/Maximum return loss(dB)	
		2400	2500
	2400-2500	VSWR	1.29
		Return loss	-18
			1.92

Freq (MHz)	Effi (%)	Effi (dB)	Gain (dBi)
2400	36.32	-4.4	-0.33
2410	36.33	-4.4	-0.24
2420	40.91	-3.88	0.32
2430	40.51	-3.92	0.43
2440	41.14	-3.86	0.42
2450	42.54	-3.71	0.47
2460	40.51	-3.92	0.24
2470	36.08	-4.43	-0.18
2480	41.15	-3.86	0.66
2490	38.25	-4.17	0.16
2500	33	-4.82	-0.54



4. Appearance structure

4.1. FPC antenna material FPC

5. Remarks

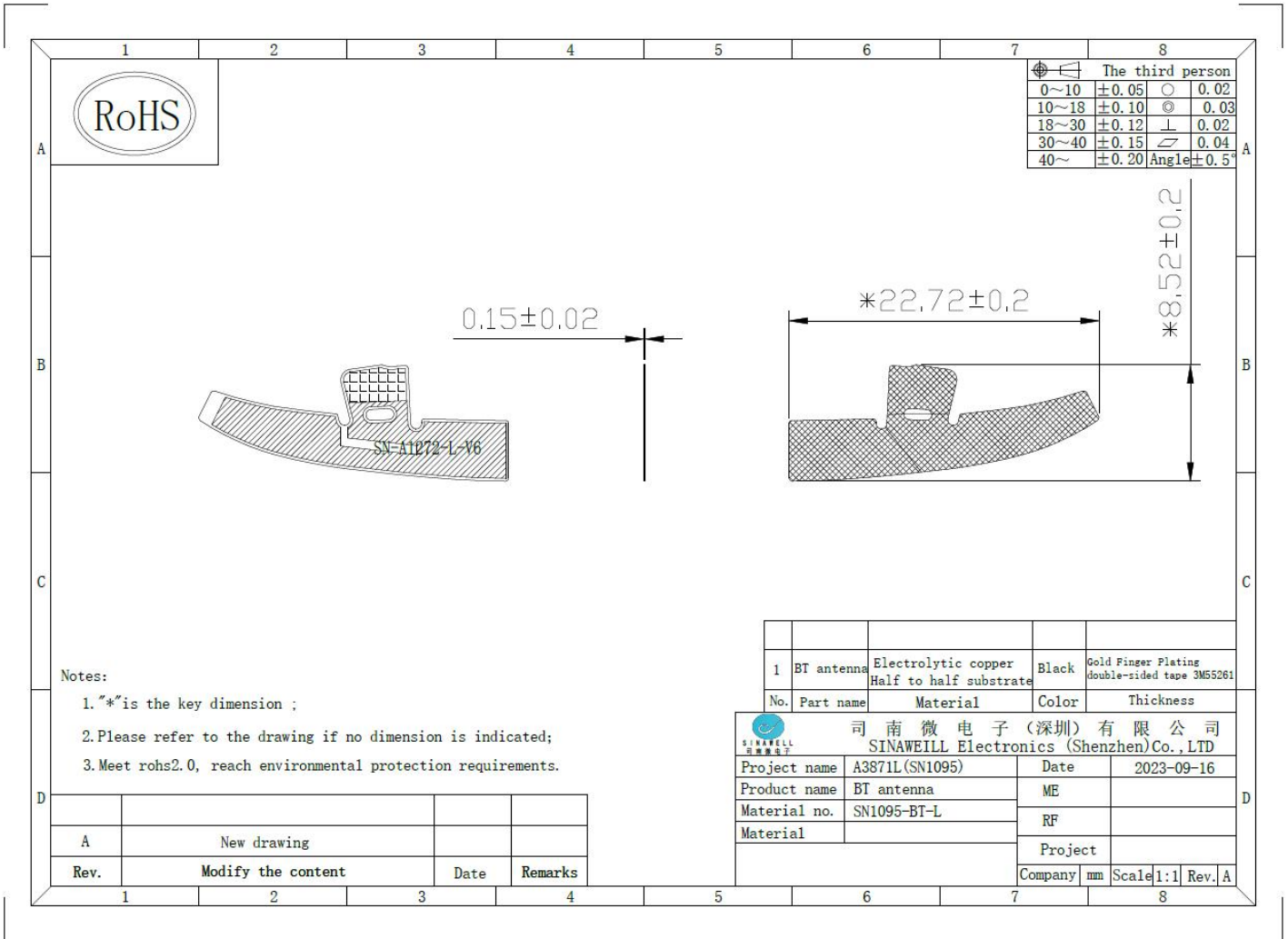
(Electrical Performance Test Report)

In the electrical performance test report, the 3D darkroom data provided for manufacturers,
The following table format

Appendix 1: Structural Drawings

Appendix II (Electrical Performance Test Report)

FPC structural drawings



Key size

NO	measure(m m)	tolerance(m m)	remarks
1	22.72	± 0.2	
2	8.52	± 0.2	
3	0.1	± 0.01	
4			
5			

3D test

report