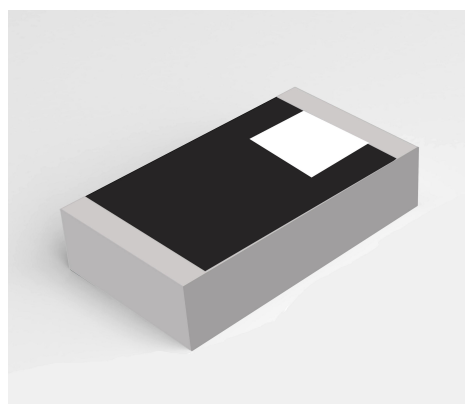


Feature

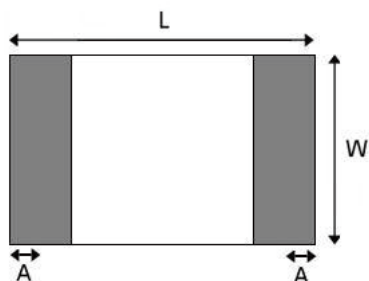
- Light weight, compact
- Wide bandwidth, low cost
- Built-in antenna with high gain



Application

- Bluetooth
- IEEE802.11g/b
- Zigbee systems
- etc...

Shapes And Dimensions Dimensions in mm



L	W	A	H
3.10±0.10	1.55±0.10	0.40±0.20	0.55±0.1

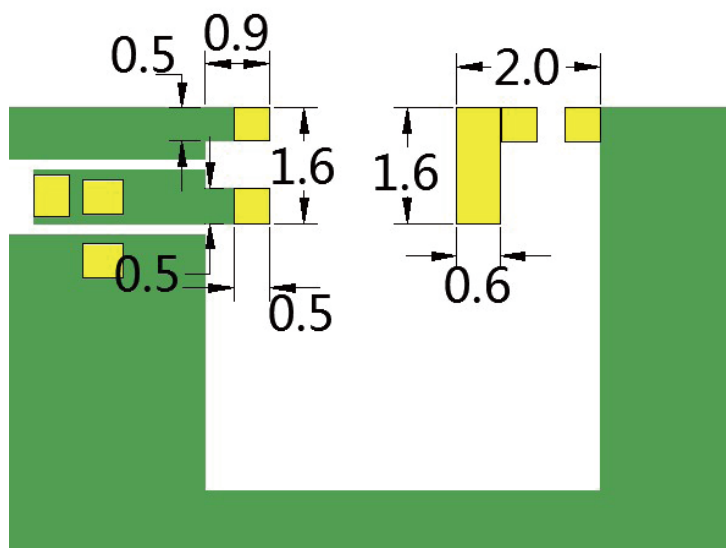


Electrical Characteristics per line(TA=25°C)

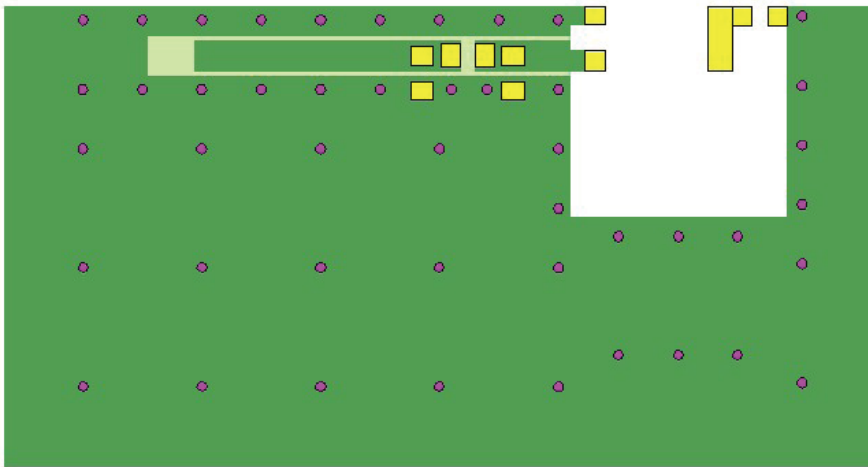
Parameter	Specification	Units
Frequency Band	2400~2480	MHz
Polarization	Line	
*Peak Gain	2.6	dBi
* Efficiency	72.30	%
Impedance	50	Ω

■ Part Numbering System

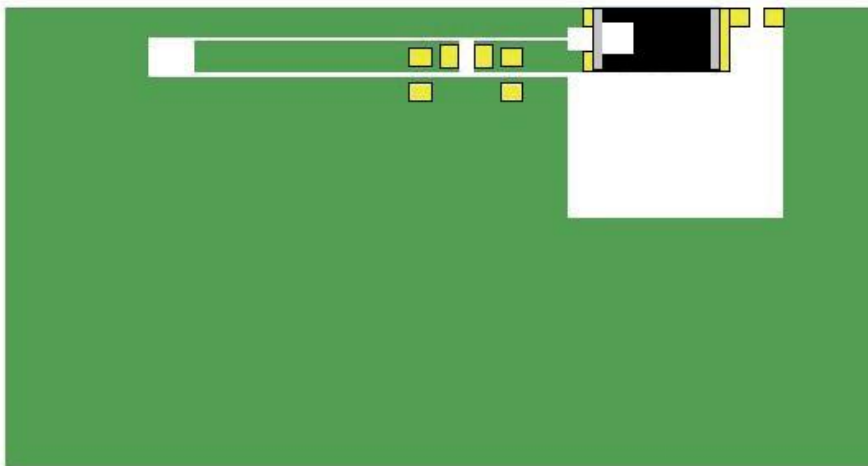
CS - 2450 - 31 - L
 Material Frequency Size Type



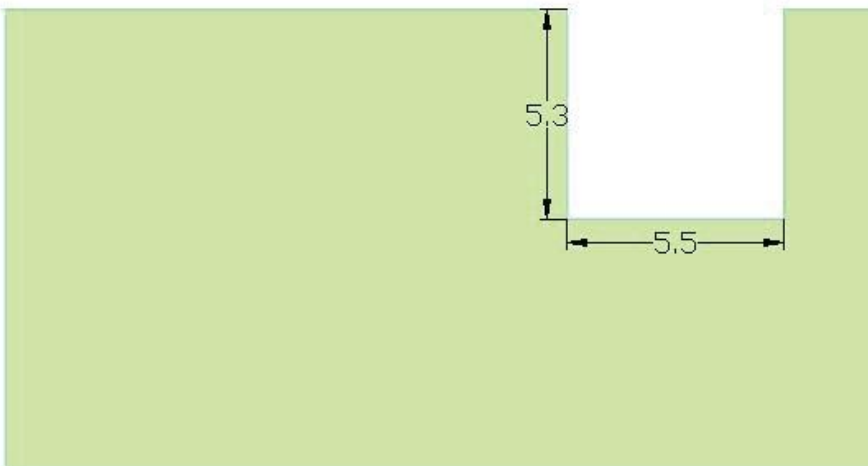
■ Evaluation Board



- ANT
- PAD
- TOP
- BOTTOM
- VIA



- ANT
- PAD
- TOP
- BOTTOM

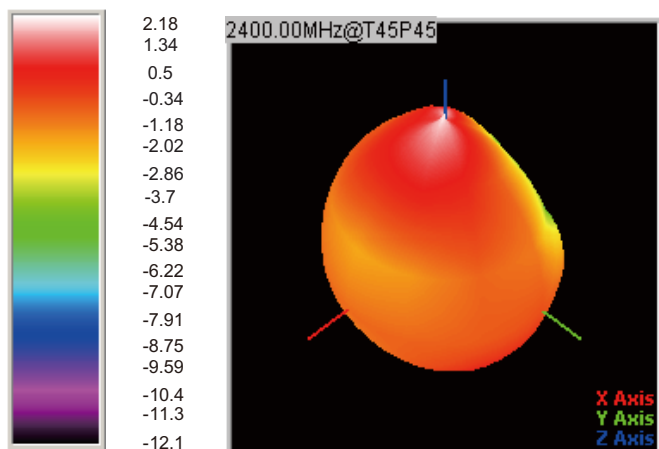


■ Radiation Patterns

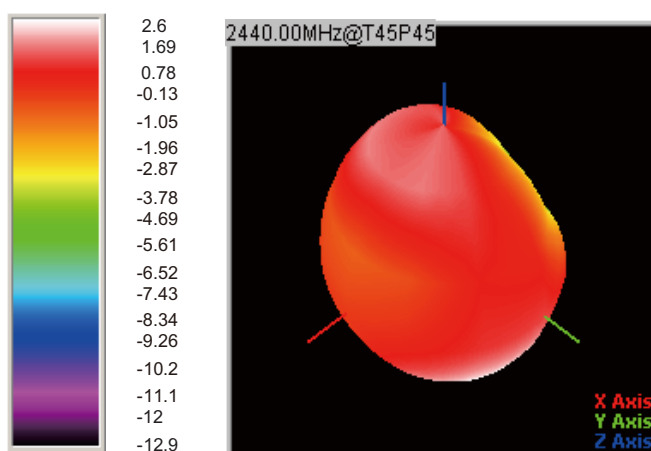
□ 2.4GHz WLAN BAND

⊙ 3D Gain Pattern (2400 MHz)

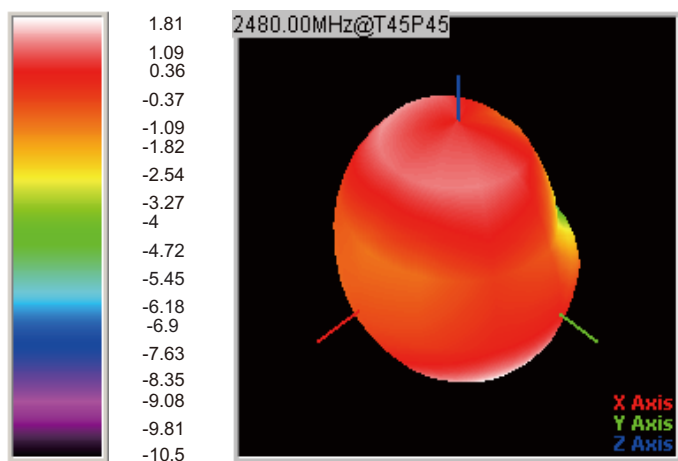
Units : dBi



⊙ 3D Gain Pattern (2440 MHz)



⊙ 3D Gain Pattern (2480 MHz)



■ Frequency Characteristics

□ EFFICIENCY AND VSWR

