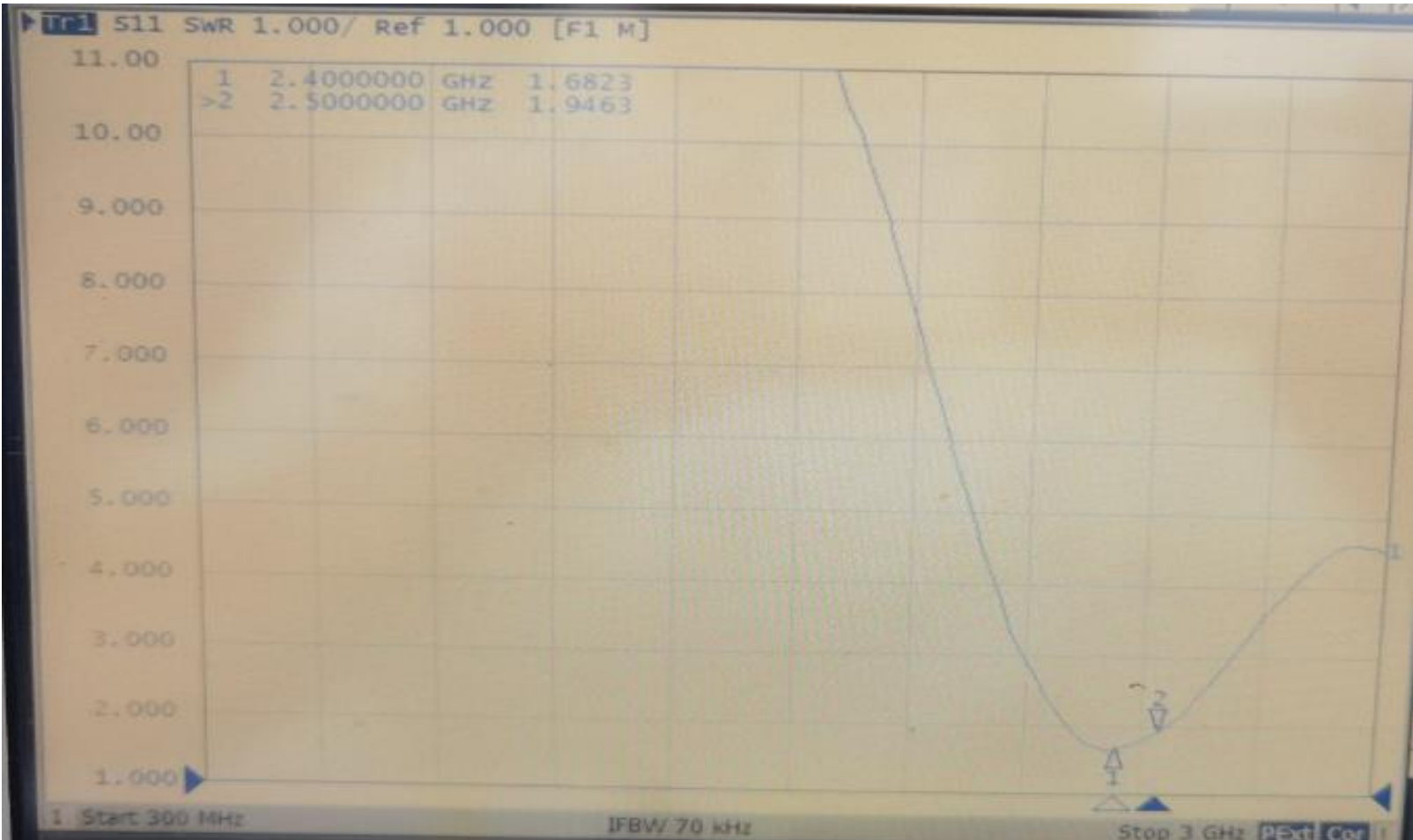


BT antenna (figure file LOGMAG + VSWR + SMITH)

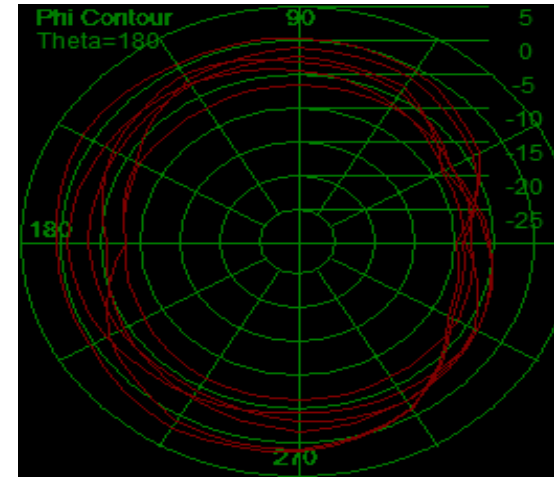
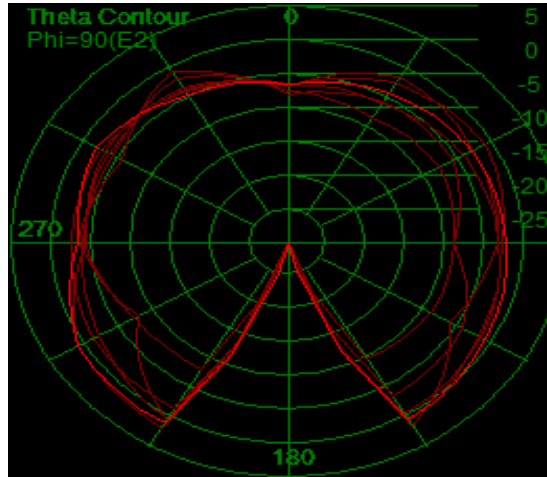
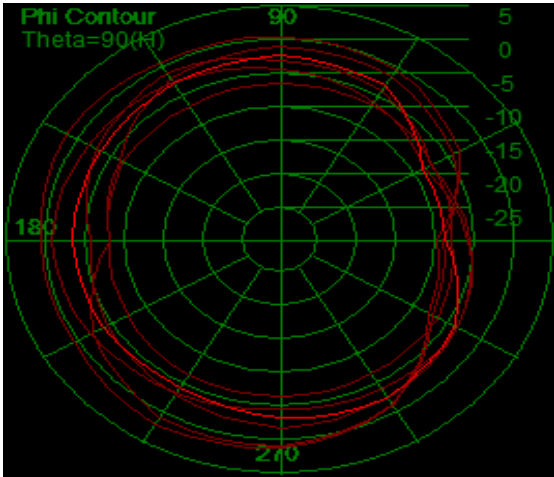
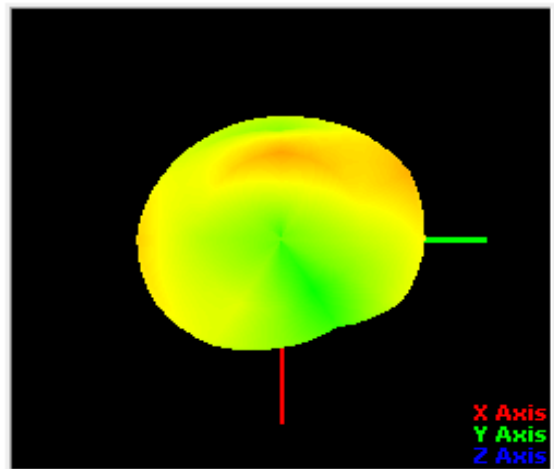
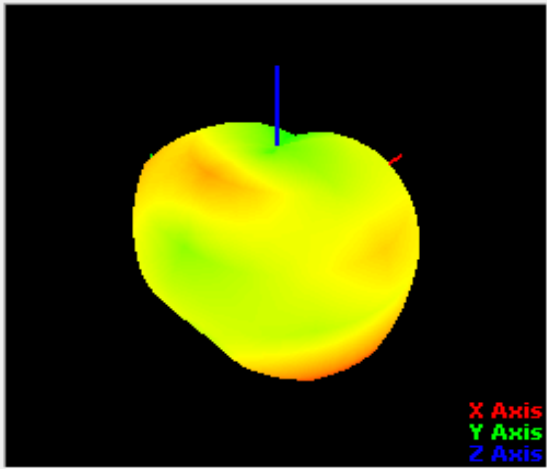
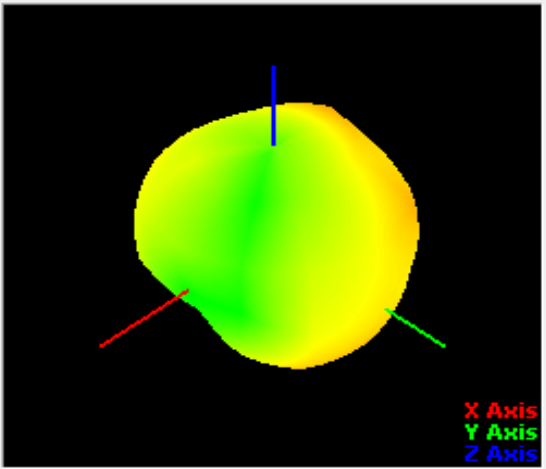




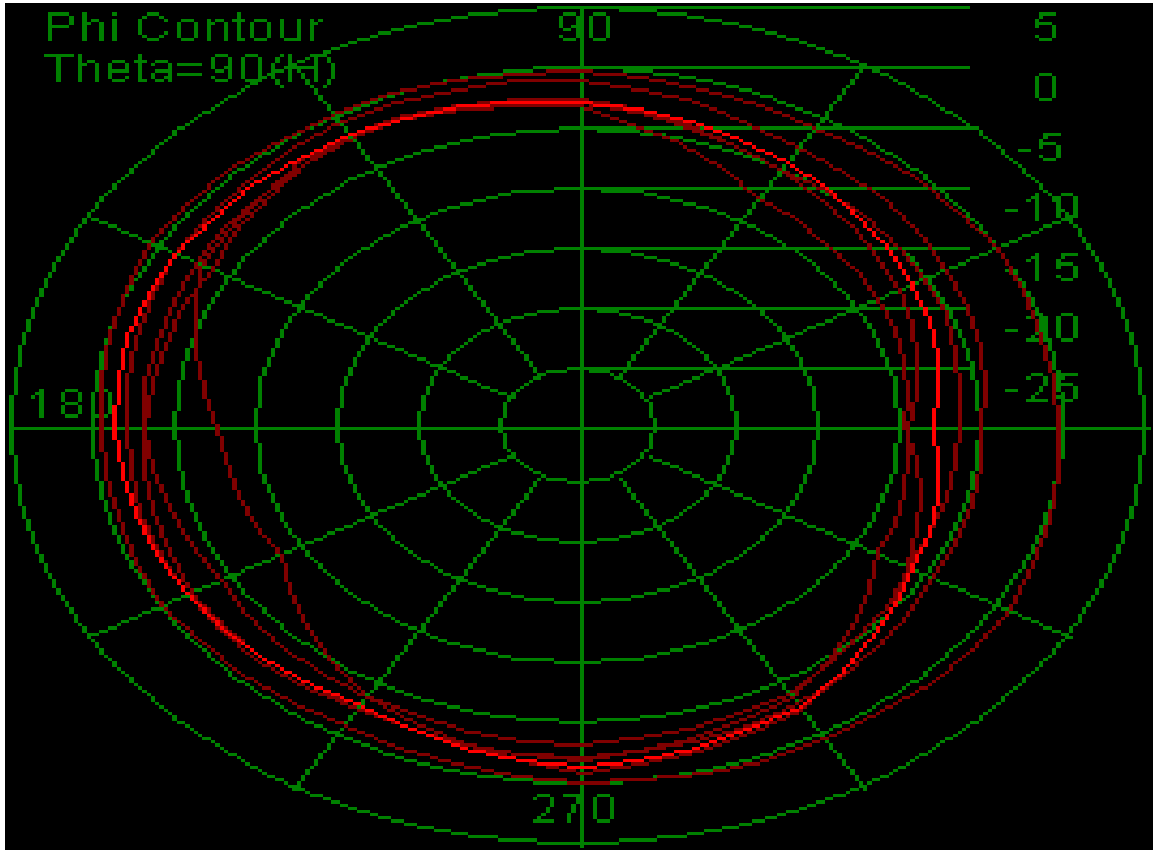
## BT-antenna efficiency and gain

Passive Test For 2400MHz~2500MHz				
Freq	Effi	Effi	Gain	
(MHz)	(%)	(dB)	(dBi )	
2400	46.0%	-3.37	0.51	
2410	48.2%	-3.17	0.93	
2420	50.0%	-3.01	1.29	
2430	53.3%	-2.73	1.62	
2440	56.1%	-2.51	1.78	
2450	57.0%	-2.44	1.72	
2460	51.9%	-2.85	1.85	
2470	47.0%	-3.28	1.24	
2480	50.6%	-2.96	1.44	
2490	52.4%	-2.81	1.19	
2500	46.8%	-3.30	1.06	

Radiation Pattern For BT Antenna (2450MHz) , Peak Gain : 1.85dbi

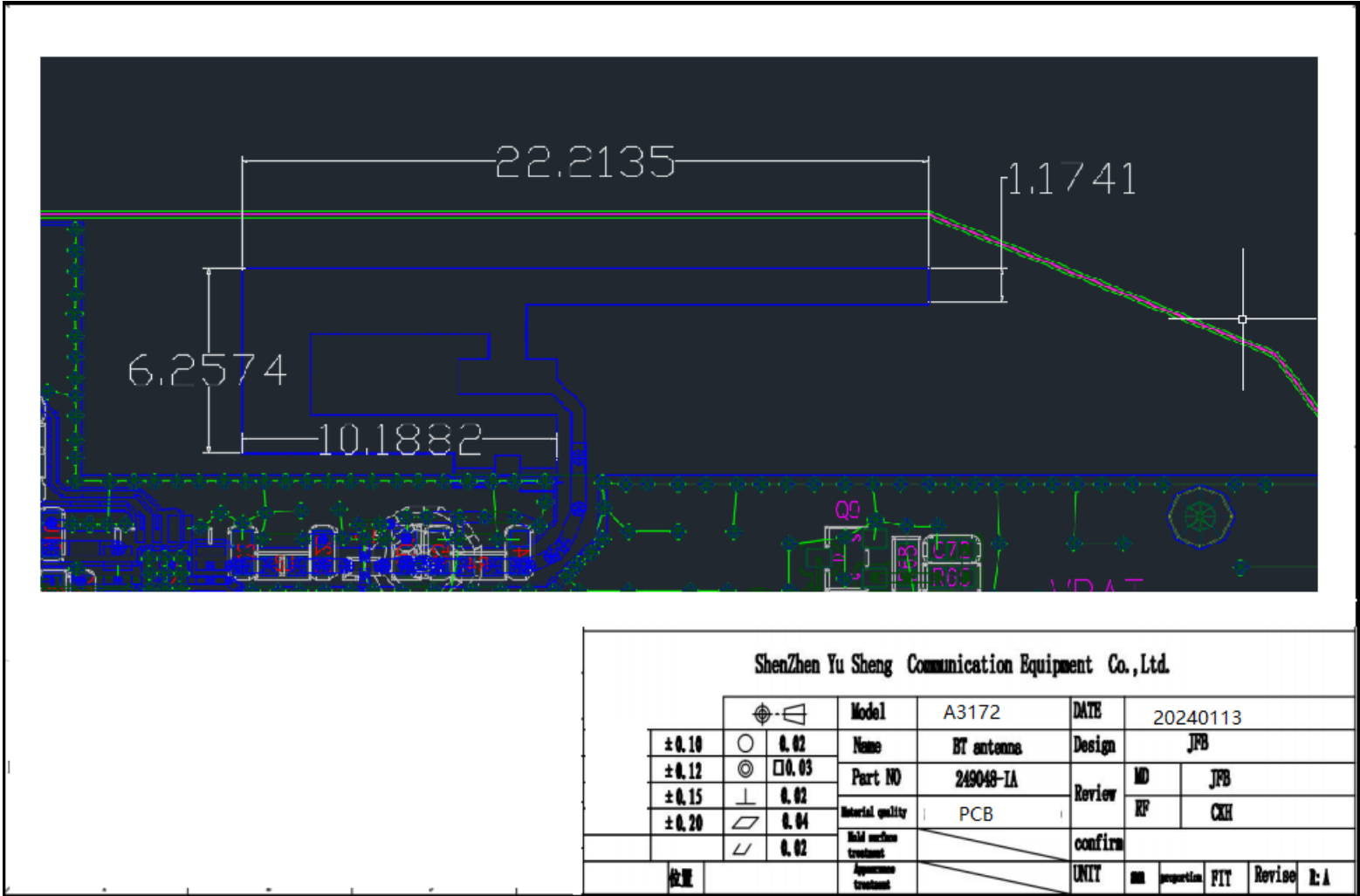


## Antenna passive parameters-BT, direction diagram



MIN= -6.89

## Antenna design



ShenZhen Yu Sheng Communication Equipment Co.,Ltd.

		Model	A3172	DATE	20240113	
±0.10		0.02	Name	BT antenna	Design	JFB
±0.12		0.03	Part NO	249048-1A	Review	MD JFB
±0.15		0.02	Material quality	PCB	RF	CKH
±0.20		0.04	Weld surface treatment		confirm	
		0.02	Appearance treatment		UNIT	mm proportion FIT Revise E:A