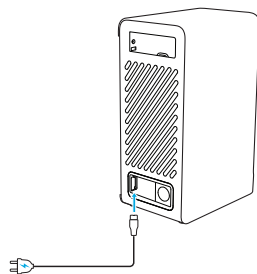
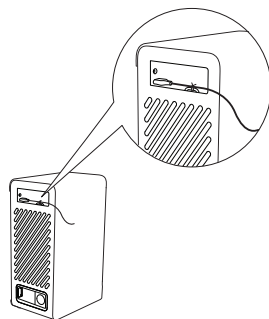


## Getting Started

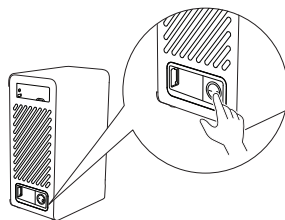
- 1 Plug one end of the AC adapter into the power port, and the other end into the power outlet.



- 2 Tie up the power cable and fix it.



- 3 Press the AC power button to power on the AnkerBox.



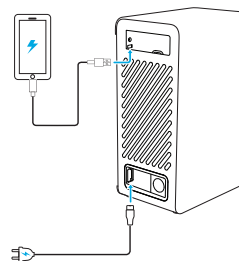
## Wi-Fi Settings

- 1 Download USR Simpleconfig App from the App Store (iOS devices running 10.0 and later versions).
- 2 Open the app and choose Configure New Device. Select the AP you want to configure, and connect.
- 3 Follow the onscreen instructions to finish the Wi-Fi setup.

QR code backlight	Off	Wi-Fi or 4G network disconnected
	Solid white	Connected to Wi-Fi / 4G network

## Loading the Ankerbox with PowerBank

- 1 Press Return button on the AnkerBox.
  - The corresponding LED indicator flashes green.
- 2 Insert the PowerBank into the slot with an indicator that flashes green.
- 3 Repeat the steps above to insert the PowerBank batteries into all the slots.



## Using the AnkerBox

## Rent a Battery

- 1 Scan the QR code to rent a battery. A battery will pop out, and the corresponding LED indicator will flash green.
- 2 Take the battery away. The LED indicator will go off.

## USER MANUAL

## ANKERBOX



Indicator	Status	Description
Slot indicator	All flash red	<ul style="list-style-type: none"> <li>AnkerBox exceeds the rated temperature</li> <li>AnkerBox self-test fails</li> <li>Over 3 malfunctions occur in the battery slot</li> </ul>
	Solid green	The AnkerBox works properly

### Return and Charge a Battery

- Press the "Return" button, the corresponding LED indicator flashes green, prompting the user to insert the battery.
- Insert the battery into the slot to charge the battery. Make sure the magnetic end faces inwards.
- After the battery is successfully returned:
  - The battery can be re-rented: the battery power level > 80%, and the corresponding LED indicator turns steady green.
  - The battery cannot be re-rented: the battery power level < 80%, and the corresponding LED indicator shows steady red.

Slot LED indicator	Description
Solid green	Fully charged
Solid red	Charging
Flashing red	Not properly charged

### Specifications

Input	100-240V $\equiv$ 1.5A 50-60Hz
Output	Slots Output: 5V $\equiv$ 1.6A $\times$ 4 USB-A Output: 5V $\equiv$ 1A
Size	362 $\times$ 156 $\times$ 240 mm / 14.3 $\times$ 6.1 $\times$ 9.4 in
Weight	5200 g / 183.4 oz

### Important Safety Instructions

When using this product, basic precautions should always be followed, including the following:

- Store product in a cool and dry place.
- Do not store the product in hot or humid environment, especially not expose it to rain or snow or extremely low air pressure.
- Use of a power supply or charger not recommended or sold by the product manufacturer may result in a risk of fire or injury to persons.
- Operating temperature should be between 32°F to 104°F / 0°C to 40°C.
- Do not disassemble the product. Take it to a qualified service person when service or repair is required. Incorrect reassembly may result in a risk of fire or injury to persons.
- If the product is not used for long periods of time, you should change and discharge once every three months.
- When charging a device, the product may feel warm, this is a normal operating condition and should not be cause for concern.
- In normal conditions, the battery performance will decline over several years.
- Do not dispose of the product in heat or fire. Exposure to fire or temperature above 100°C may cause explosion. The temperature of 100°C can be replaced by the temperature of 212°F.
- Do not clean the product with harmful chemicals or detergents. Clean its terminals with dry cloth if they become dirty.
- Misuse, dropping or excessive force may cause product damage.
- When disposing of secondary cells or batteries, keep cells or batteries of different electrochemical systems separate from each other.
- Be aware discharged battery may cause fire or smoke, tape the terminals to insulate them.
- Do not subject the product to mechanical shock, crushing or cutting.
- Do not short-circuit the product or be short-circuited by other metal objects.
- Do not use any cell or battery which is not designed for use with the equipment.
- Read all the instructions before using the product.
- To reduce the risk of injury, close supervision is

necessary when the product is used near children or keep the product out of the reach of children.

- Do not put fingers or hands into the product.
- Do not use the product in excess of its output rating. Overload outputs above rating may result in a risk of fire or injury to persons.
- Do not use the product that is damaged or modified. Damaged or modified batteries may exhibit unpredictable behavior resulting in fire, explosion or risk of injury.
- Have servicing performed by a qualified repair person using only identical replacement parts. This will ensure that the safety of the product is maintained.
- Switch off the power bank when not in use.

### SAVE THESE INSTRUCTIONS

CAUTION RISK OF EXPLOSION IF BATTERY IS REPLACED BY AN INCORRECT TYPE. DISPOSE OF USED BATTERIES ACCORDING TO THE INSTRUCTIONS

### Declaration of Conformity

Hereby, Anker Innovations Limited declares that the product type A2850 is in compliance with Directive 2014/30/EU.

The full text of the EU declaration of conformity is available at the following internet address:  
www.anker.com

Anker Innovations Limited

Room 1318-19, Hollywood Plaza, 610 Nathan Road, Mongkok, Kowloon, Hong Kong

This product complies with the radio interference requirements of the European Community.



CAUTION RISK OF EXPLOSION IF BATTERY IS REPLACED BY AN INCORRECT TYPE. DISPOSE OF USED BATTERIES ACCORDING TO THE INSTRUCTIONS.



This symbol means the product must not be discarded as household waste, and should be delivered to an appropriate collection facility for recycling. Proper disposal and recycling helps protect natural resources, human health and the environment. For more information on disposal and recycling of this product, contact your local municipality, disposal service, or the shop where you bought this product.

FCC ID: 2AOKB-A2850

Contains FCC ID: 2APJ4-SLM750

The following importer is the responsible party:

Company Name: Fantasia Trading LLC

Address: 5350 Ontario Mills Pkwy, Suite 100, Ontario, CA 91764

Telephone: 1-800-988-7973

### FCC Statement

This device complies with Part 15 of the FCC Rules. Operation is subject to the following two conditions: (1) This device may not cause harmful interference, and (2) this device must accept any interference received, including interference that may cause undesired operation.

**Warning:** Changes or modifications not expressly approved by the party responsible for compliance could void the user's authority to operate the equipment.

**Note:** This equipment has been tested and found to comply with the limits for a Class B digital device, pursuant to Part 15 of the FCC Rules. These limits are designed to provide reasonable protection against harmful interference in a residential installation.

This equipment generates, uses, and can radiate radio frequency energy and, if not installed and used in accordance with the instructions, may cause harmful interference to radio communications. However, there is no guarantee that interference will not occur in a particular installation. If this equipment does cause harmful interference to radio or television reception, which can be determined by turning the equipment off and on, the user is encouraged to try to correct the interference by one or more of the following measures:

- Reorient or relocate the receiving antenna.
- Increase the separation between the equipment and receiver.
- Connect the equipment into an outlet on a circuit different from that to which the receiver is connected.
- Consult the dealer or an experienced radio / TV technician for help.

### FCC Caution

Changes or modifications not expressly approved by the part responsible for compliance could void the user's authority to operate the equipment.

FCC RF Radiation Exposure Statement Caution: This Transmitter must be installed to provide a separation distance of at least 20 cm from all persons.