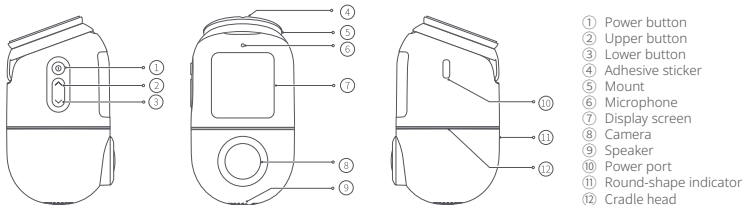


70mai Dash Cam Omni User Manual

70mai

Product overview

Please read this manual carefully before using the product and keep it in a safe place.



Specifications

Product: Dash Cam

Model: X200

Resolution: 1920×1080

Lens: FOV 140°/ F1.5

Battery capacity: 300mAh

Input: 5V $\overline{=}$ 2A

Power supply: Car cigarette lighter

Battery type: Lithium polymer battery

Packing list

1. Dash Cam × 1
2. Power cord × 1
3. Car charger × 1
4. Mount × 1
5. Electrostatic sticker × 2
6. Wiring crowbar × 1
7. Adhesive sticker × 2 (with 1 piece pre-applied to the mount)
8. User manual × 1

Installation

1. Installing the electrostatic sticker

Put the electrostatic sticker on the recommended area as shown in the figure. Make the gap on the electrostatic sticker face upwards.



Select the flat, smooth and clean area for the installation and avoid the edge of the windshield. Remove air bubbles between the sticker and the glass.

2. Installing the dash cam

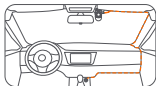
Peel off the protective film from the adhesive sticker and paste the dash cam on the electrostatic sticker in the dotted area.



Make sure the gap on the adhesive sticker aligns with that on the electrostatic sticker and the display screen faces the car interior.

3. Connecting the power supply

Run the power cord along the top of the windshield, down the A-pillar, and around the glove compartment. Connect the power cord to the car charger, then plug the charger into the cigarette lighter socket.



Notes:

- Use the included crowbar to hide the power cord underneath the vehicle's headliner and rubber seal along the A-pillar.
- Depending on the vehicle, the cigarette lighter socket may be located in a different position. The figure provided is for reference only.

4. Adjusting the dash cam angle

Hold the dash cam and turn the dash cam up and down to adjust the dash cam angle based on the preview screen.

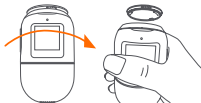


Installing/uninstalling the mount

The mount is pre-installed on the dash cam. If you need to uninstall it, follow the steps below:

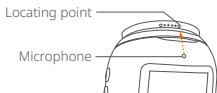
Uninstalling the

mount: Hold the dash cam and screw it clockwise and then the dash cam will separate with the dash cam.



Installing the mount:

1. Align the microphone with the big locating point on the right of the mount, and then the dash cam is inserted to the mount.



2. Hold the dash cam and screw counterclockwise until the microphone is aligned with the big locating point on the left of the mount, and then the dash cam is tighten up with the mount.



Connecting with 70mai app

This product needs to be used in conjunction with the 70mai app. You can download and install the app by scanning the QR code on the right or finding "70mai" in the app store.



Note: Android 4.4 & iOS 9.0 or above is required to connect to the dash cam's Wi-Fi hotspot with a mobile phone.

User guide

For more on product functions and FAQs, please see the user guide by scanning the QR code on the right.



Accessories (optional)

This product can also be used with the 70mai 4G Hardwire Kit. Scan the QR code to obtain the operation guide for the 70mai 4G Hardwire Kit.



Precautions

- Before using the dash cam, please read all the precautions and the user guide to ensure correct and safe use.
- The dash cam is intended to assist drivers with the purpose of recording the environment outside the vehicle. The dash cam does not guarantee the user's driving safety. We shall not be held liable for any accident, damage, or loss of information caused by operating the dash cam while driving.
- Due to differences in vehicle conditions, driving style, driving environment, etc., some functions may not work properly. A power failure, usage in environments outside the normal operating temperature or humidity range, or a collision may cause the dash cam to function abnormally. There is no guarantee that this dash cam will function normally under all circumstances. Videos

- recorded by this dash cam are for reference only.
- The eMMC (Embedded Multi Media Card) is built in the dash cam for storage. You can find the memory capacity information on the label of the dash cam and product box.
 - Install this dash cam correctly, and do not block the driver's line of sight, nor block the vehicle's airbag, in order to avoid product failure or personal injury.
 - Use the included car charger, power cord, and other accessories in order to avoid product failure due to non-conformance. We shall not be held liable for any loss or damage caused by the use of a non-genuine car charger or power cord.
 - The dash cam is equipped with a built-in battery that cannot be removed. Do not disassemble the dash cam. Do not expose batteries or battery packs to sunlight, fire, or environments where the ambient temperature is extreme heat. There is a risk of explosion if the battery is incorrectly installed, therefore only use and replace with the same or an equivalent type of battery.
 - Keep the dash cam away from water drops or splashes. Keep the device dry to avoid battery failure.
 - If the battery becomes deformed, swollen, or starts leaking during use or storage, stop using the dash cam immediately in order to avoid safety issues, and contact after-sales service.
 - Never wash the dash cam with chemical solvent or cleaner.
 - Keep the dash cam away from any strong magnetic fields, as they may cause damage to the dash cam.
 - Do not use the dash cam in environments with temperatures over 60°C or below -10°C.

- After working for a period of time, the case temperature of the dash cam will rise, please be careful when touching it.
- Only use this dash cam within the scope permitted by law.

Regulatory Compliance Information

WEEE Information



All products bearing this symbol are waste electrical and electronic equipment (WEEE as in directive 2012/19/EU) which should not be mixed with unsorted household waste. Instead, you should protect human health and the environment by handing over your waste equipment to a designated collection point for the recycling of waste electrical and electronic equipment, appointed by the government or local authorities. Correct disposal and recycling will help prevent potential negative consequences to the environment and human health. Please contact the installer or local authorities for more information about the location as well as terms and conditions of such collection points.

EU Declaration of Conformity



The manufacturer hereby, declares that this equipment is in compliance with the applicable Directives and European Norms, and amendments. The full text of

the EU declaration of conformity is available at the following internet address:

<https://help.70mai.asia/1193.html>

Cautions

- Disposal of a battery into fire or a hot oven, or mechanically crushing or cutting of a battery, that can result in an explosion.
- Leaving a battery in an extremely high temperature surrounding environment that can result in an explosion or the leakage of flammable liquid or gas.
- A battery subjected to extremely low air pressure that may result in an explosion or the leakage of flammable liquid or gas.
- This device is equipped with a built-in battery that cannot be removed or replaced. Do not disassemble or modify the battery by yourself.
- Replacement of a battery with an incorrect type can defeat a safeguard (for example, in the case of some lithium battery types).

FCC Caution

Changes or modifications not expressly approved by the party responsible for compliance could void the user's authority to operate the equipment.

This equipment has been tested and found to comply with the limits for a Class B digital device, pursuant to Part 15 of the FCC Rules. These limits are designed to provide reasonable protection against harmful interference in a residential installation. This equipment generates, uses and can radiate radio frequency energy and, if not installed and used in accordance with the instructions, may cause harmful interference to radio communications. However, there is no guarantee that interference will not occur in a particular installation.

If this equipment does cause harmful interference to radio or television reception, which can be determined by turning the equipment off and on, the user is encouraged to try to correct the interference by one or more of the following measures:

- Reorient or relocate the receiving antenna.
- Increase the separation between the equipment and receiver.
- Connect the equipment into an outlet on a circuit different from that to which the receiver is connected.
- Consult the dealer or an experienced radio/TV technician for help.

This device complies with Part 15 of the FCC Rules.

Operation is subject to the following two conditions: (1) this device may not cause harmful interference, and (2) this device must accept any interference received, including interference that may cause undesired operation.

This equipment complies with FCC radiation exposure limits set forth for an uncontrolled environment. This equipment should be installed and operated with a minimum distance of 20 cm between the radiator & your body. This

transmitter must not be co-located or operating in conjunction with any other antenna or transmitter.

Illustrations of the product, accessories, and user interface in the user manual are for reference purposes only. The actual product and functions may vary due to product enhancements.

Service: help@70mai.com

For further information, please go to www.70mai.com

Manufacturer: 70mai Co., Ltd.

Address: Room 2220, Building 2, No. 588, Zixing Road, Minhang District, Shanghai, China