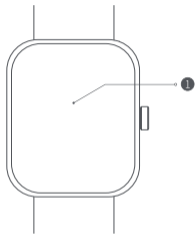


Maimo Watch User Manual

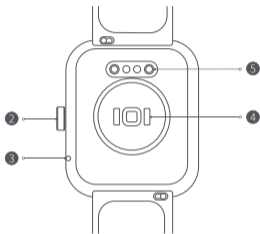
Maimo

Product overview

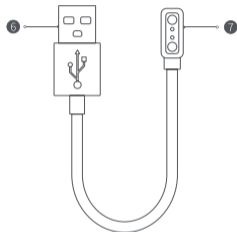
Read this manual carefully before use, and retain it for future reference.



- 1. Display screen
- 2. Power button
- 3. Microphone



- 4. Heart rate sensor area
- 5. Contact point



- 6. USB connector
- 7. Charging connector

Note: Illustrations of product, accessories, and user interface in the user manual are for reference purposes only. The actual product and functions may vary due to product enhancements.

How to connect

Download and install the Maimo Fit app to better manage your watch, and log in to your Maimo Fit account for more services.

1. Before first use, charge the watch to activate it.
2. When the watch is turned on, scan the QR code on the display screen with your phone, then download and install the Maimo Fit app.

You can also download and install the app from the app stores, or scan the QR code on the right.

Note: The version of the app might have been updated, please follow the instructions based on the current app version.

3. Log into your Maimo Fit account in the app, select **Add device** and follow the instructions to add your watch.
4. Allow the pairing request on the watch and then wait until the pairing process is completed on the app.

Note: During the pairing, make sure the Bluetooth is enabled on your phone and the watch is well connected with your phone.



How to use

Button instructions

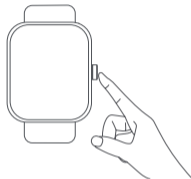
Press once

1. Enter the function list from the home screen.
2. Go back to the home screen on other pages.
3. Wake the screen when it is off.
4. Pause/resume during an exercise.

Press and hold

5. When the watch is turned off, press and hold for 2 seconds to turn it on.
6. While charging, press and hold for 5 seconds to force restart the watch.
7. On the home screen, press and hold for 2 second to wake Amazon Alexa.

Note: Amazon Alexa is not available in all countries and regions. For more details, please check in the Maimo Fit app or visit www.amazon.com/alexa-availability.



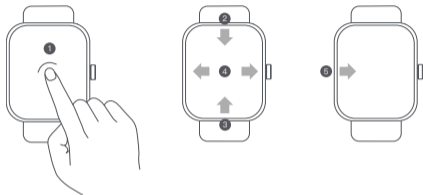
Screen instructions

On home screen

1. Press and hold for 2 seconds to change watch face.
2. Swipe down to view notifications.
3. Swipe up to open control panel.
4. Swipe left or right to switch widgets.

On other pages

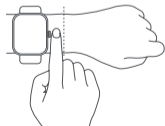
5. Swipe right to go back.



How to wear

For daily use, comfortably tighten the strap around your wrist about one-finger width away from your wrist bone. Ensure the heart rate sensor can collect data normally.

Note: Wearing the strap too loosely may impact the data collection by the heart rate sensor.

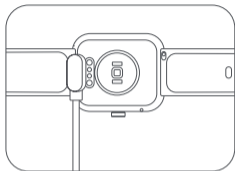


Charging

1. Hold the charging connector close to the contact points on the back of the watch, and then the charging connector will magnetically attach to the contact points of the watch.
2. Connect the USB connector of the charging base to a standard adapter at an output voltage of 5 V or higher.
3. The screen of the watch will light up and show the charging icon.

Notes:

- If the watch is unable to turn on after it has not been used for a while, it needs to be charged for about 1 minute before the charging icon is displayed.
- Wipe the watch's contact points clean before charging so as to avoid residual sweat or moisture.



User guide

Scan the QR code to access the online guide. The guide provides detailed product information including descriptions of functions. Please carefully read this guide before use in order to avoid damage due to incorrect use.



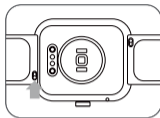
Adjusting & disassembling/assembling the strap

Adjusting the strap

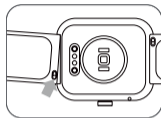
Adjust the position of the buckle according to the circumference of your wrist.

Disassembling/Assembling the strap

1. Slide the spring pin and hold it to remove the strap.
2. Insert the strap to the watch, slide the spring pin and then release it. The strap is well installed.
3. You can pull the strap to see if it is installed securely.



Remove the strap



Install the strap

Specifications

Name: Maimo Watch

Model: WT2105

FCC ID: 2AOK9-WT2105

Product: Smart Watch

Display screen: 1.69-inch color screen

Battery capacity: 300 mAh

Charging voltage: 5 V \pm 0.2 V

Charging time: About 2.5 hours

Weight of product: 40g (Including strap)

Wireless connectivity: Bluetooth 5.0 BLE

Bluetooth frequency: 2402-2480 MHz

Max. transmission power consumption: 4 dBm

Compatible with: Android 6.0 & iOS 9.0 or above

Safety precautions

- When using the watch to measure your heart rate, please hold your wrist still.
- The watch has a water resistance rating of 5 ATM. However, this function is not permanent and may decline over time. The watch can be worn in the cold shower, swimming pool, or while swimming near the shore. However, it cannot be used in a sauna or while scuba diving.
- The screen of the watch does not support underwater operations. When the watch comes into contact with water, use a soft cloth to wipe away excess water from its surface before use.
- During daily use, avoid wearing the watch too tightly. Keep its contact area dry and regularly clean the strap with water. Immediately stop using the watch and seek medical assistance if the contact area on your skin shows signs of redness or swelling. Due to friction, wearing the watch for a long time during high-intensity exercise may cause skin irritation. If this is the case, please stop wearing the watch.
- Use the included charging base to charge the watch. Only use qualified or certified power adapter supplied by qualified manufacturers.
- Keep the power adapter, charging base, and watch in a dry environment while charging. Do not touch the power adapter or charging base with wet hands. Do not expose the power adapter, charging base, and watch to rain or other liquids.
- Please use the watch within a temperature range of -20°C to 50°C and store the watch within a temperature range of -30°C to 70°C. When the ambient temperature is too high or too low, the watch may malfunction.
- This watch is equipped with a built-in battery that cannot be removed. Do not disassemble the watch. Do not expose batteries or battery packs to sunlight, fire, or other conditions with extreme heat. There's a risk of explosion if the battery is incorrectly installed. Only replace with the same or an equivalent type of battery.
- Do not disassemble, puncture, strike, crush or throw the battery into a fire.
- Never throw the watch or its battery into a fire so as to avoid an explosion.
- This watch is not a medical device, any data or information provided by the watch should not be used as a basis for diagnosis, treatment, and prevention of diseases.
- The watch and its accessories may contain small parts. To avoid choking or other hazards or damages caused by the children, keep the watch out of the reach of children.
- This watch is not a toy and should only be used by children under adult supervision.

Regulatory compliance information

WEEE information



All products bearing this symbol are waste electrical and electronic equipment (WEEE as in directive 2012/19/EU) which should not be mixed with unsorted household waste. Instead, you should protect human health and the environment by handing over your waste equipment to a designated collection point for the recycling of waste electrical and electronic equipment, appointed by the government or local authorities. Correct disposal and recycling will help prevent potential negative consequences to the environment and human health. Please contact the installer or local authorities for more information about the location as well as terms and conditions of such collection points.

EU declaration of conformity



The manufacturer hereby, declares that this equipment is in compliance with the applicable Directives and European Norms, and amendments. The full text of the EU declaration of conformity is available at the following internet address: <https://help.70mai.asia/1193.html>

Battery Safety

- Disposal of a battery into fire or a hot oven, or mechanically crushing or cutting of a battery, that can result in an explosion.
- Leaving a battery in an extremely high temperature surrounding environment that can result in an explosion or the leakage of flammable liquid or gas.
- A battery subjected to extremely low air pressure that may result in an explosion or the leakage of flammable liquid or gas.
- This device is equipped with a built-in battery that cannot be removed or replaced. Do not disassemble or modify the battery by yourself.

Safety information

Caution

Battery abuse or mishandling can cause overheating, liquid leakage, or an explosion. To avoid possible injury, do the following:

- Do not open, disassemble, or service any battery.
- Do not attempt to replace the internal rechargeable lithium batteries.
- Do not crush or puncture the battery.
- Do not short-circuit the battery, or expose it to water or other liquids.
- Keep the battery away from children.
- Keep the battery away from fire.
- Do not leave the battery in an extremely high-temperature environment or an extremely low air pressure environment.
- Stop using the battery if it is damaged, or if you notice any discharge or the buildup of foreign materials on the battery leads. We recommend that the batteries be charged about once every three months to prevent overcharge.
- Do not put the battery in trash that is disposed of in landfills. When disposing of the battery, comply with local laws or regulations.

FCC

Changes or modifications not expressly approved by the party responsible for compliance could void the user's authority to operate the equipment.

This equipment has been tested and found to comply with the limits for a Class B digital device, pursuant to Part 15 of the FCC Rules. These limits are designed to provide reasonable protection against harmful interference in a residential installation. This equipment generates, uses and can radiate radio frequency energy and, if not installed and used in accordance with the instructions, may cause harmful interference to radio communications. However, there is no guarantee that interference will not occur in a particular installation.

If this equipment does cause harmful interference to radio or television reception, which can be determined by turning the equipment off and on, the user is encouraged to try to correct the interference by one or more of the following measures:

- Reorient or relocate the receiving antenna.
- Increase the separation between the equipment and receiver.
- Connect the equipment into an outlet on a circuit different from that to which the receiver is connected.
- Consult the dealer or an experienced radio/TV technician for help.

This device complies with Part 15 of the FCC Rules. Operation is subject to the following two conditions: (1) this device may not cause harmful interference, and (2) this device must accept any interference received, including interference that may cause undesired operation.

This equipment complies with FCC radiation exposure limits set forth for an uncontrolled environment. This transmitter must not be co-located or operating in conjunction with any other antenna or transmitter.

Service: help@maimo.co

For further information, please go to www.maimo.co

Manufacturer: 70mai Co., Ltd.

Address: Room 2220, Building 2, No. 588, Zixing Road, Minhang District, Shanghai, China