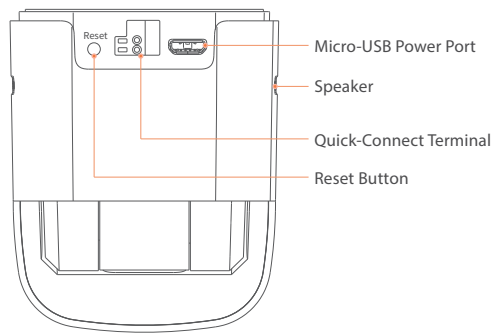
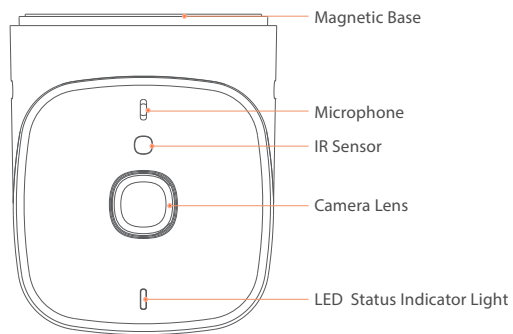




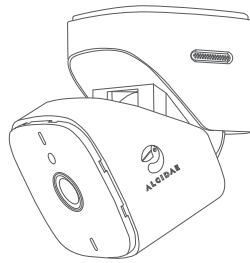
Garager 2

QUICK START GUIDE

Product Description



| What's In The Box



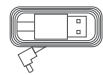
Alcidae Garager 2



20' Connector Wire



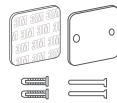
Wire Cutter



6' USB Cable



Power Adapter










Optional Installation Kits

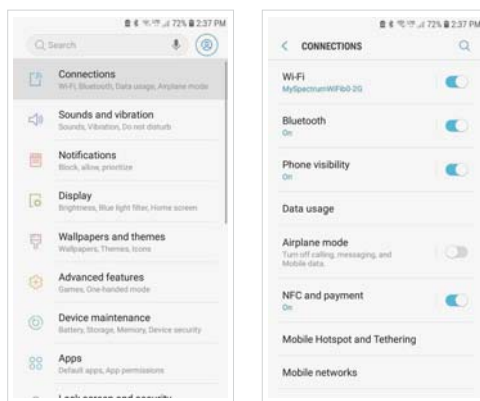


Quick Start Guide

I LED Status Indicator Light

-  **Full red:** Device is starting up
-  **Flash red:** Waiting for network allocation
-  **Flash blue:** Connecting the internet
-  **Full blue:** Connected to the internet
-  **Flash green:** Connected to the motor
-  **Full green:** Proper functioning
-  **Flash Red&Blue:** Device is upgrading, do not disconnect the power supply

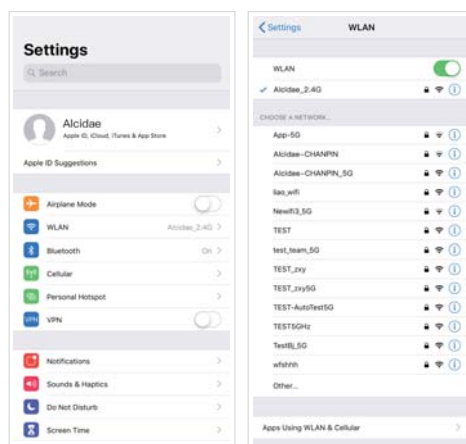
Connect Phone to 2.4 GHz Wi-Fi (Android)



To connect your Android device to a 2.4 GHz network:

1. Unlock your device and tap the Settings app.
2. Tap Network & Internet > Wi-Fi.
3. Turn on Wi-Fi by tapping Use Wi-Fi at the top.
4. Select a 2.4 GHz Wi-Fi network.
5. This is commonly indicated by a 2, 2.4, or 2G at the end of the network name or SSID.
6. If prompted, enter the password for the network.
7. When you are connected to the Wi-Fi network, the word Connected appears under the network name.

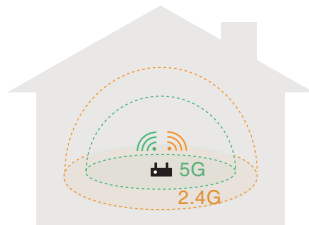
I Connect Phone to 2.4 GHz Wi-Fi (iPhone)



To connect your iOS (Apple) device to a 2.4 GHz network

1. Unlock your device and tap the Settings app.
2. Tap Wi-Fi, near the top of the list of settings options.
3. Turn on Wi-Fi by tapping the switch next to Wi-Fi at the top.
4. Note: Wi-Fi is activated when the switch is green.
5. Select a 2.4 GHz Wi-Fi network.
6. This is commonly indicated by a 2, 2.4, or 2G at the end of the network name or SSID.
7. If prompted, enter the password for the network.
8. When you are connected to the Wi-Fi network, a blue checkmark appears to the left of the network name.

Connect Phone to 2.4GHz Wi-Fi Using a Mesh Router

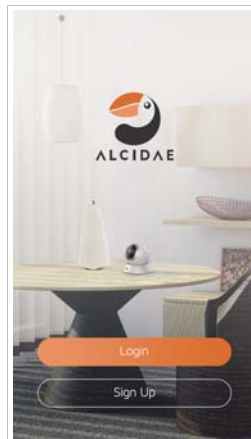


- A mesh network is a group of devices that act as a single Wi-Fi network: so, there are multiple sources of Wi-Fi around the house, instead of just a single router. These additional Wi-Fi sources are called points.
- Mesh network uses the same name for both the 2.4 and 5GHz bands. Both radio bands are active simultaneously. Keep in mind: your personal devices (a smartphone, tablet, laptop, etc.) will connect to only one radio band at any given time.
- This method is different from many routers. Some other routers have two separate Wi-Fi networks (one for the 2.4GHz band and another for the 5GHz band), which require you to manually connect to the band you want.
- **TIP:** The waves of the 2.4 GHz band can travel a greater distance than those of the 5GHz band. If your phone does not have the ability to switch Wi-Fi bands, try moving farther away from your router and points until your phone moves to the 2.4GHz band. The proceed with setting up your Alcidae smart home devices.

Step 1 **Download the Alcidae APP**
Where: Inside Home near Wi-Fi Router



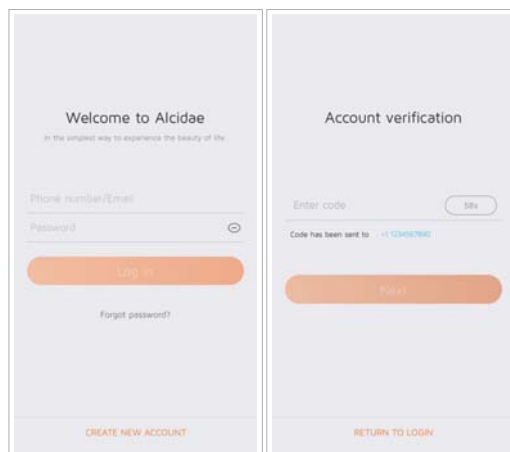
Alcidae
Alcidae Inc.
4.4 (4.5k) · 100% Free



1. Download the **Alcidae APP**
2. Scan the QR code below or visit your smart phone Apple APP Store or Google Play Store



Step 2 **Create an Account**
Where: Inside Home near Wi-Fi Router



1. **Sign up** for a new account.
2. Once you've finished entering your information, you will receive an **email or text verification code**.
3. Type the verification code on the screen to **activate your account**.

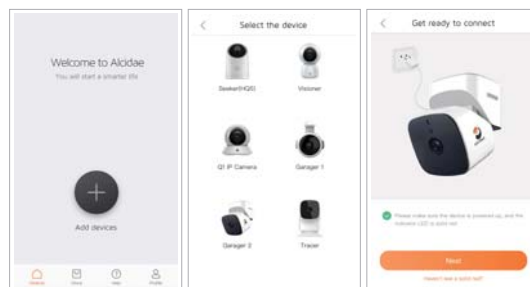
Step 3 **Plug in Garager 2**
Where: Inside Home near Wi-Fi Router



1. **Connect the Micro-USB cable** to the back of the Garager power port and the USB end into the USB AC Adapter.
2. **Plug in the USB AC Adapter** into a wall outlet for power.
3. When plugged in and powered on the Garager LED status indicator light will begin to:


 **Full red:** Device is starting up

Step 4 **Pair Garager 2**
Where: Inside Home near Wi-Fi Router



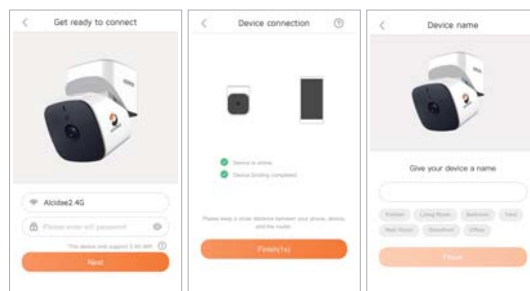
Reminder: Verify your mobile device is connected to a 2.4GHz **Wi-Fi network** during the installation steps.

1. From the Alcidae app, select **Add devices**.
2. Select the **Garager 2** from the list of devices.
3. Press and hold the Garager reset button for 6-10 seconds, you will hear the camera say, "Camera reset complete".
4. After reset, the LED status indicator light will start to:

 **Flash red:** Waiting for network allocation

Step 5 Connect to Wi-Fi Network

Where: Inside Home near Wi-Fi Router



1. You will be directed to a network configuration screen.
2. Your Wi-Fi network will auto load in the field.
3. Enter your network password in the field.
4. The Garager LED status indicator light will begin to:
 - **Flash blue:** Connecting the internet
5. Once connected the Garager LED status indicator light will turn:
 - **Full blue:** Connected to the internet

(If your Wi-Fi network did not show up, that means your mobile device is either not connected to a Wi-Fi network or your location permission might be turned off.)

I Garager 2 Pre-Mount Planning

Where: In the Garage

Factors to consider before mounting the Garager 2

- 1. Garager 2 Location strength of Home Wi-Fi signal.** Pre-check your home Wi-Fi signal strength into the garage with your smart phone device. If your Wi-Fi strength appears to be weak, consider moving the home Wi-Fi router closer toward your garage, or installing a Wi-Fi range extender. (Available from most electronic retailer)
- 2. Determine your ideal Garager 2 location.**
 - On garage door motor (recommended)
 - On garage door motor railing (recommended)
 - On drywall ceiling/walls, or wooden placement (good)
- 3. Access to 110V AC outlet within 6 feet.**

Step 6 **Mount Garager**
Where: In the Garage

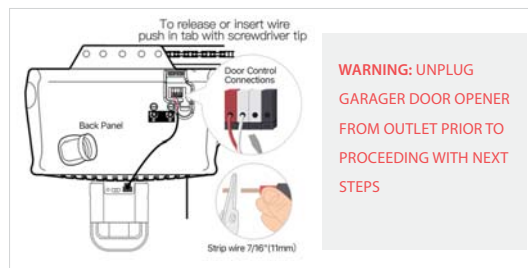


Choose Surface Installation Requirement

- 1. Garager 2 built-in Magnetic Base Mount** ideal for metallic surfaces.
- 2. Double-sided Adhesive 2x2 pad + Metal 2x2 Plate** ideal for plastic and smooth wood surfaces.
- 3. Wood Screws, drywall anchors + Metal 2x2 Plate** ideal for drywall and rough wood surfaces.
4. It is recommended to position the Garager 2 upside-down from the bottom of your garage door opener or alternating surfaces. The surveillance camera can be manually vertically adjusted to your ideal viewing angle.

Step 7 Connecting Controller Wiring to Door Motor

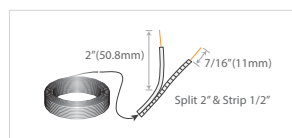
Where: In the Garage



1. Leave garage door opener unplugged until Step 9.

2. Take your **Wiring Spool**, and while leaving intact, take one end and split apart the dual strands approximately 2".

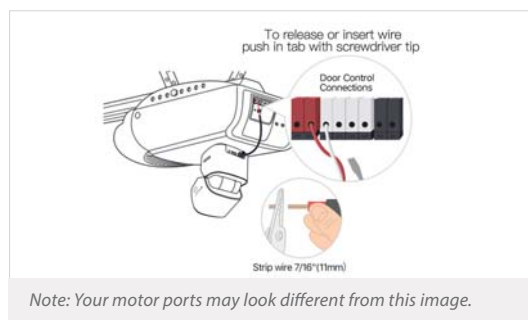
3. Take your **Wire Stripping Tool**, position the small hole 1/2" below the end of wire, and clamp down while rotating the tool in a full circular motion, which will remove the outer installation.



4. Locate your **current garage door opener button**. The garage door opener button is usually located on a side wall and notice the controller wiring that leads out towards the input terminals located on the motor housing.

Step 7 (Continued)

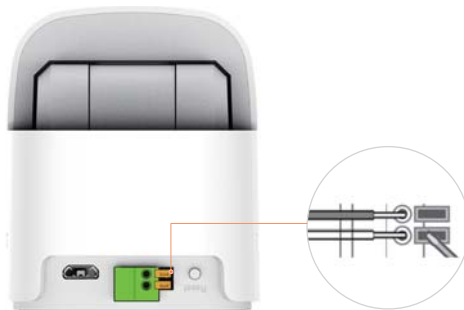
Where: In the Garage




5. Note: Your garage door motor may use push slot fastening or screw fastening.
6. Note: Identify the Slot or Screw positioning of your controller wiring, and particularly the positioning of the White (neutral) and Colored (hot) wiring. The Colored wiring will be Black or Red.
7. **Disconnect** the two wires from the garage door motor. For Slot positioning you may need a pointed tool to disengage the clamp.
8. **Twist together** the ends of the wall controller wire with your spool wiring, ensuring White on White, and Color on Color. The Garager 2 wiring ends are both neutral for your knowledge.
9. **Re-insert or Connect** the now twisted pairs of wiring back into their original positioning. This may require loosening the tabs or screws depending on your garage door model.

Step 8 Connect Wires to Garager 2

Where: In the Garage

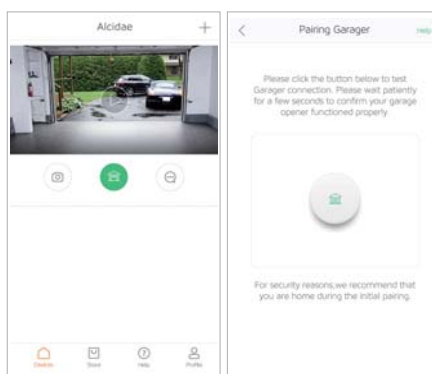


1. Unwind your Garage Spool Wiring just enough to reach the back of your Garager 2 model, while leaving the remaining wire intact.
2. Take the loose end of your Garage Spool Wiring and repeat Step 7 instructions for 7.1 and 7.2.
3. Insert the now exposed wires into the 1st and 2nd terminals on the back of the Garager 2 device. Again, you may need a small pointed tool to push down on the buttons to release and insert the wiring.
4. Once inserted properly, the LED status indicator light will turn from Blue to  **Full green:** Proper functioning

*Note: Both wires are neutral, so it doesn't matter which color wire goes into which of the two ports. However, **make sure the open wire ends are not touching each other.***

Step 9 Sync Garager 2 to GDO

Where: In the Garage



1. PLUG BACK IN YOUR GARAGE DOOR OPENER INTO THE AC OUTLET

2. Observe if your garage door is currently in the open or closed position.
3. **Take your Alcidae APP** and select the Green garage open/close button in your **first attempt** to pair the garage door opener controls with the Garager 2.
4. **If successful** on the **first attempt** the garage door will either open or close based on Step 9.1.
5. **Don't worry**, the Garager 2 works with over 1200+ garage door motors, which operates on several codes, we may need to repeat Step 9.3 upwards to five (5) attempts before we're successful.
6. **Ready, let's begin repeating Step 9.3 again.**
7. Once you've confirmed the controls are working your set up is complete.

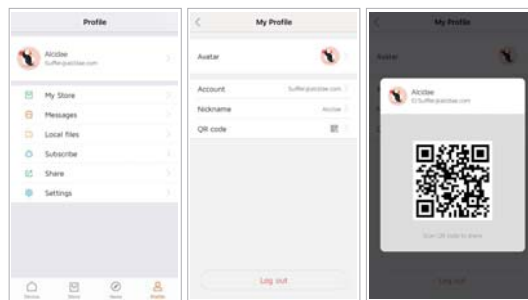
Step 9 (Continued)

Where: In the Garage

8. In the unusual and awkward dilemma of not being successful after several attempts, then we want to help you through the process. Please call our professional customer service team who will be eager to assist you. Find our contact information in the Troubleshooting section.

Share the APP Controls with Another User

How-To



1. Download the Alcidae APP onto the phone you wish to give access to.
2. Create a new account on that APP using the phone number or email address as the ID.
3. On the phone you are trying to give access to, do the following:
 - Tap "Profile" on the lower right corner of the screen.
 - Tap your user name.
 - Then tap "QR code" in the middle of the screen. A large QR code should appear at the center of the screen.

I Share the APP Controls with Another User

How-To (Continued)

On the phone that has access do the following:

1. Tap the "Profile" icon in the lower right corner of the screen.
2. Tap "Share".
3. Choose the device you want to share, then tap "Add User". Input the user's ID you want to provide access to or tap the QR code icon. If using the QR code, the "Scan QR code" screen will appear. Use this to scan the other user's "QR code" generated from their phone.
4. Select the device access you want to share with.
5. **On the phone you wish to give access to:** You should have a message. On the "Profile" screen tap "Messages". Then tap the newly arrived "System Message". Accept the invite and you should be good to go.

I Helpful Hints

1. Settings Menu

- Can be found by double tapping Live View Screen and Setting Icon will appear in top right-hand corner. Tap Icon to access Menu screen options.

2. Alerts & Notifications

- Detects all sound and motion
- Settings: Off, Low, Med, High

Make sure to customize and/or adjust the Alerts & Notifications you receive based on your sensitivity preference.

3. Night Vision

- IR sensors detect when it is day or night.
- Automatically switches to night vision mode when there is a low light setting for better viewing option.

| Notice

1. Do not place the device near heat sources or exposed fire sources, such as electric heaters, ovens, stoves, candles, or other places where high temperatures may occur.
2. Do not let children or pets swallow accessories to avoid injury or equipment failure.
3. The application working temperature of this product is -5 C ~ 40 C. Do not use it in an environment where the temperature is too high or too low.
4. This product is a precision electronic device. Do not use this produce in an environment where water might get inside or humidity is above 90%, so as not to affect normal operation.

| Garager 2 Purchase Warranty Policy

Within 12 months of purchase if you encountered any issues with our product, you are eligible for our product repair and maintenance service with a valid purchase receipt.

Alcidae will incur no liability whatsoever to provide packaging for warranty items. Upon receipt of the warrantied item, should it be determined that the packaging is insufficient, or the unit failed by a non-manufactured defect, Alcidae may at its discretion, void the warranty. The customer is responsible for the shipping cost. A nominal handling fee may apply. You must contact customer service first before sending a unit in for service; you can email us at support@alcidae.com or call **1-800-988-5498**.

| Things not covered by Warranty Policy

1. No credentials or if warranty expired.
2. Damage caused by failure to use or store according to product instructions.
3. Damage caused by disassembly without Alcidæ authorization.
4. Damage due to force majeure.
5. Normal wear and tear, including some discoloration.

| Troubleshooting

If you are having trouble connecting or using your device, please contact our customer service team.

Customer Support Line: 1-800-988-5498

Business Hours: 8AM-6PM Pacific Time Zone

E-mail: Support@alcidæ.com

Support Website: <https://www.alcidæ.com/pages/support>

Here you can find:

- Quick Start Guide
- FAQ's
- Garage Door Opener Compatibility Checker
- Amazon Alexa / Google Assistant Instructions
- Product Warranty

I FCC Statement

This device complies with Part 15 of the FCC Rules. Operation is subject to the following two conditions:

- (1) This device may not cause harmful interference.
- (2) This device must accept any interference received, including interference that may cause undesired operation.

2. Changes or modifications not expressly approved by the party responsible for compliance could void the user's authority to operate the equipment.

Note: This equipment has been tested and found to comply with the limits for a class B digital device, pursuant to Part 15 of the FCC Rules. These limits are designed to provide reasonable protection against harmful interference in a residential installation.

This equipment generates uses and can radiate radio frequency energy and, if not installed and used in accordance with the instructions, may cause harmful interference to radio communications. However, there is no guarantee that interference will not occur in a particular installation. If this equipment does cause harmful interference to radio or television reception, which can be determined by turning the equipment off and on, the user is encouraged to try to correct the interference by one or more of the following measures:

- Reorient or relocate the receiving antenna.
- Increase the separation between the equipment and receiver.
- Connect the equipment into an outlet on a circuit different from that to which the receiver is connected.
- Consult the dealer or an experienced radio/TV technician for help.

This equipment should be installed and operated with a minimum distance of 20 cm between the radiator and your body.



ALCIDAE

MAKE YOUR HOME SMART

www.alcidae.com