

Internal Photos of MARK 2

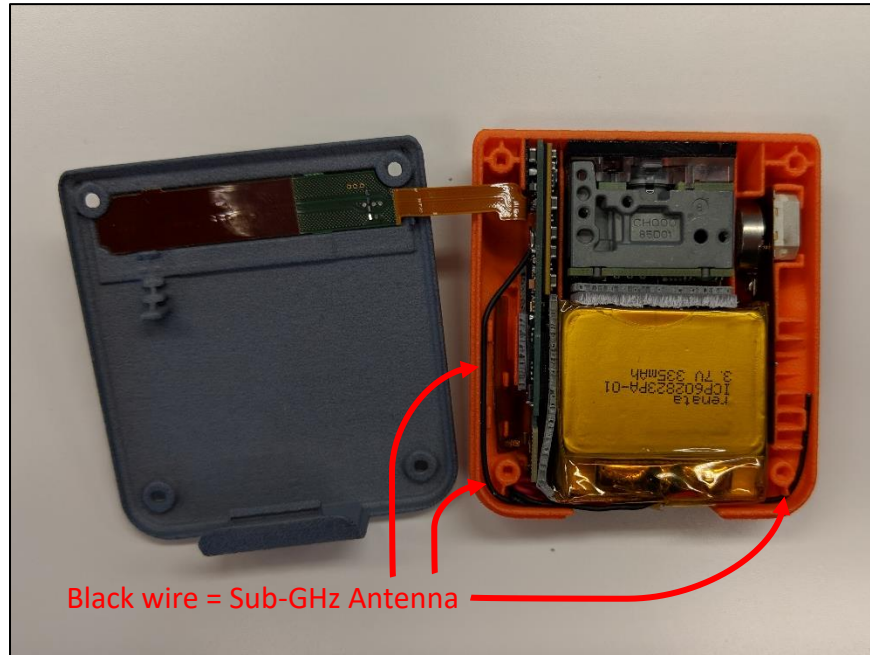


Figure 1: Bottom view with bottom enclosure removed

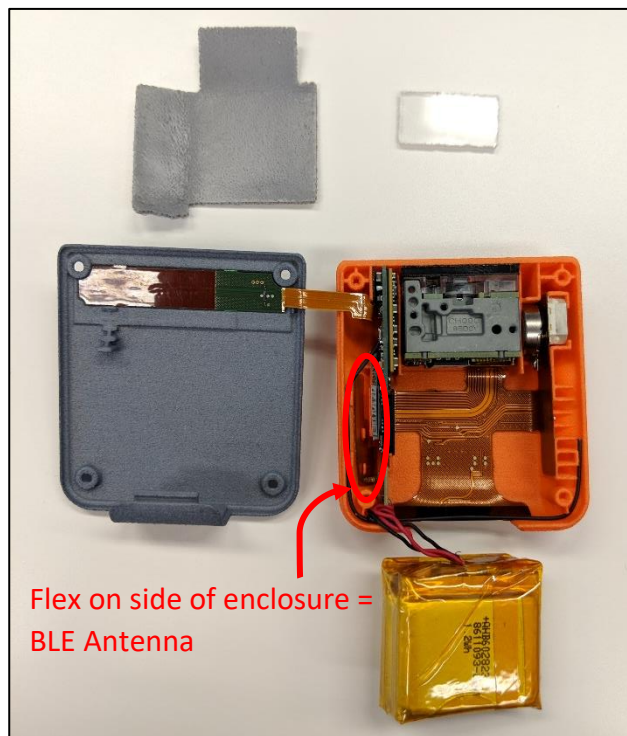


Figure 2: Bottom view with bottom enclosure and battery removed



Figure 3: Top View, BLE Antenna

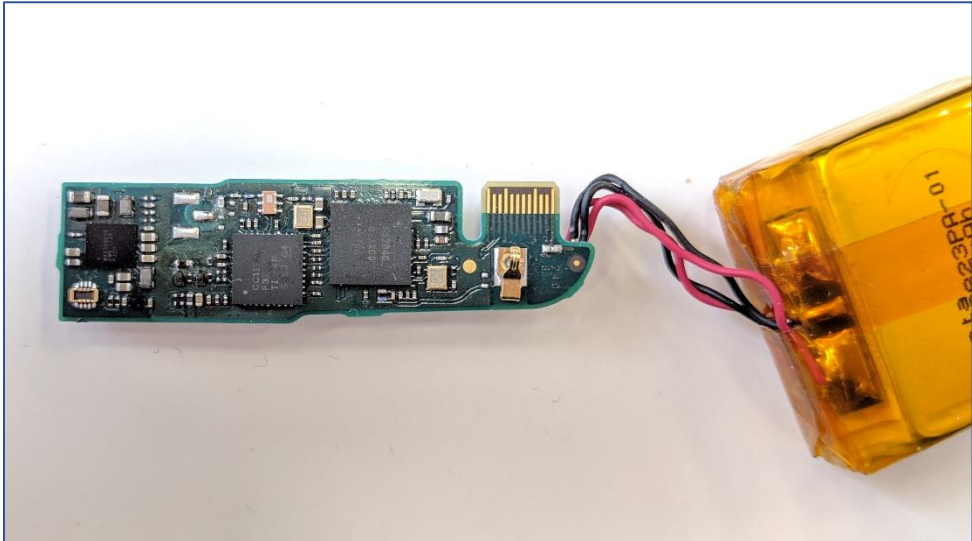


Figure 4: Top View, Main PCB

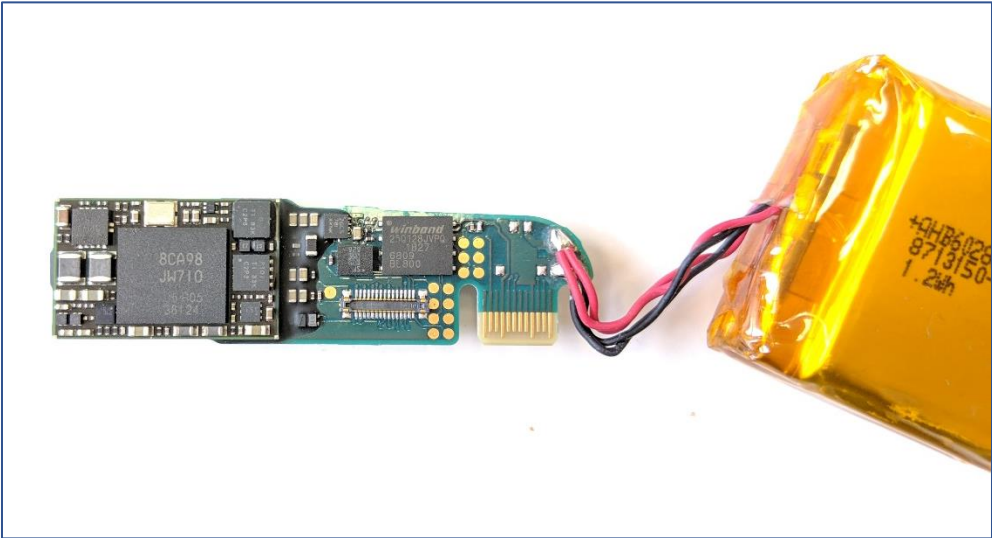


Figure 5: Bottom View, Main PCB

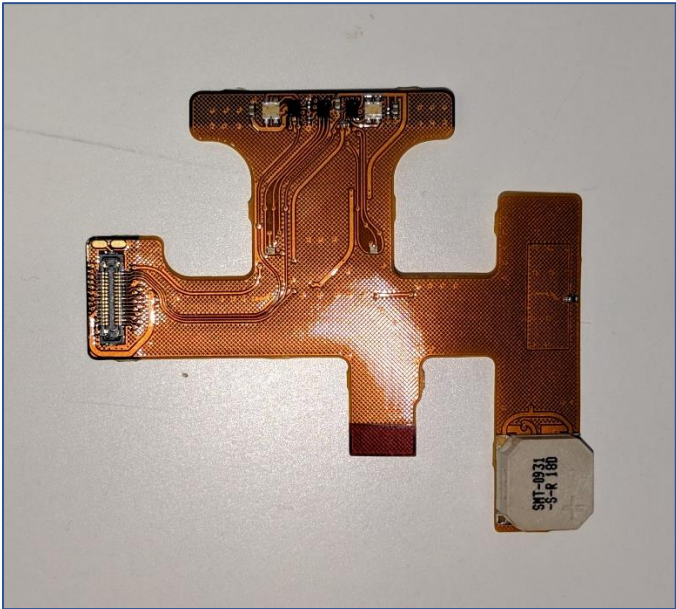


Figure 6: Top View, ScanFlex PCB

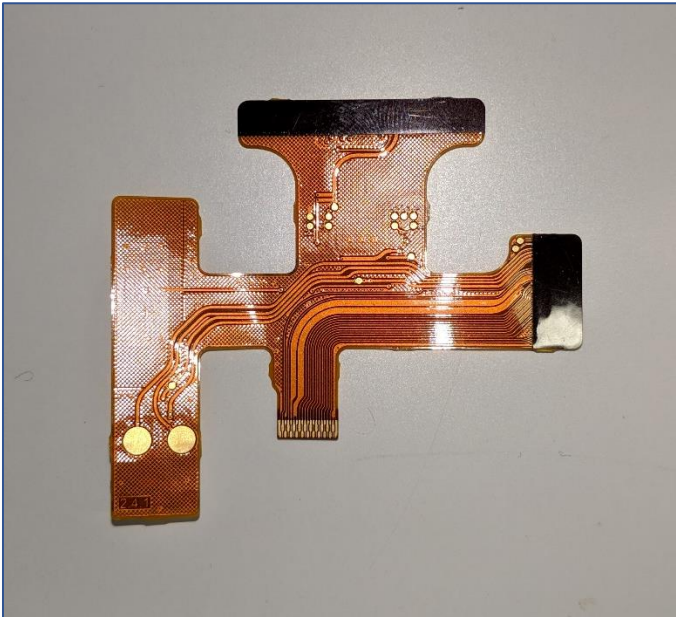


Figure 7: Bottom View, ScanFlex PCB

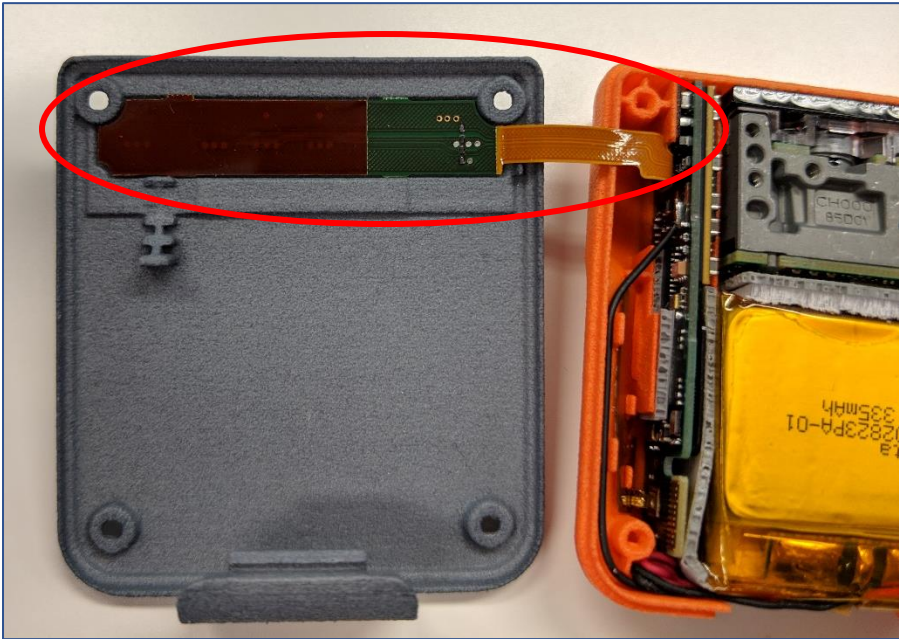


Figure 8: Top View, PinFlex PCB

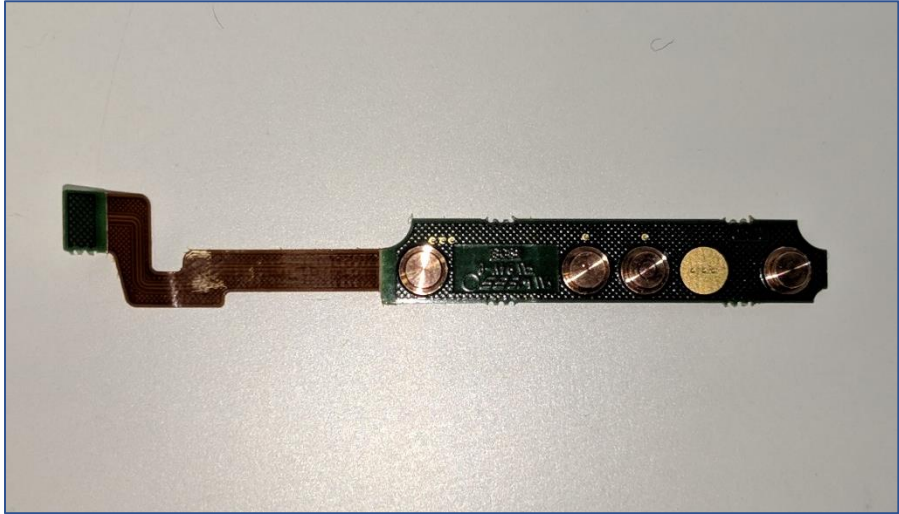


Figure 9: Bottom View, PinFlex PCB