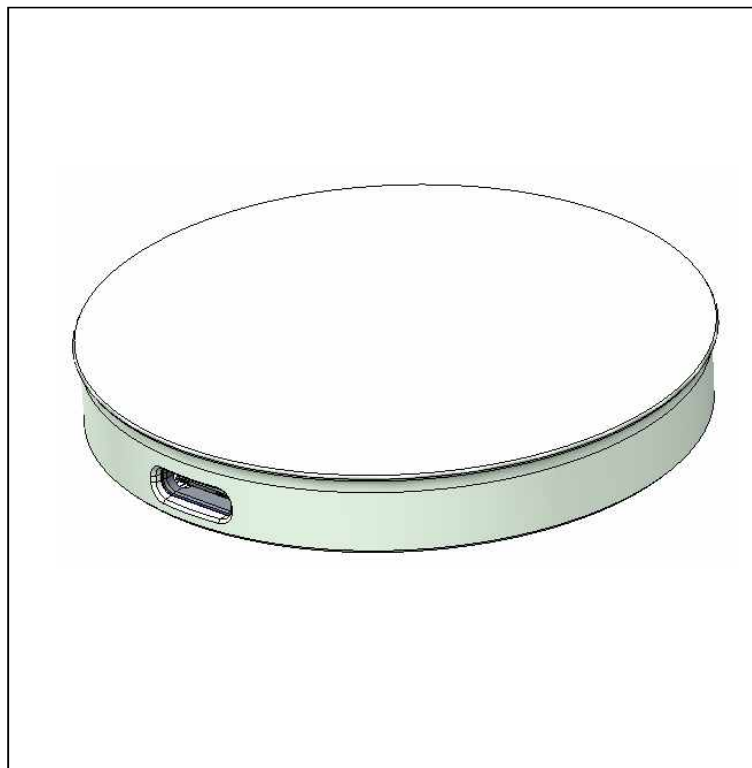


PNTELECOM

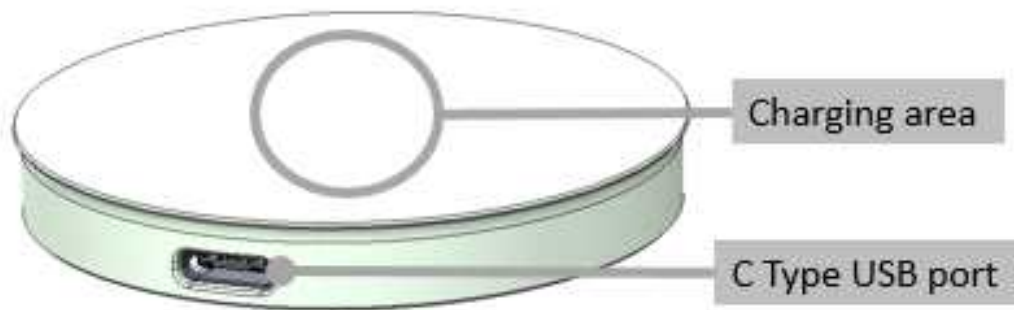
WIRELESS FAST CHARGER

PWC-1 USER MANUAL



Note: For best results, please read these instructions completely before using the PWC-1. Failure to follow the instructions can lead to product damage.

Description of parts



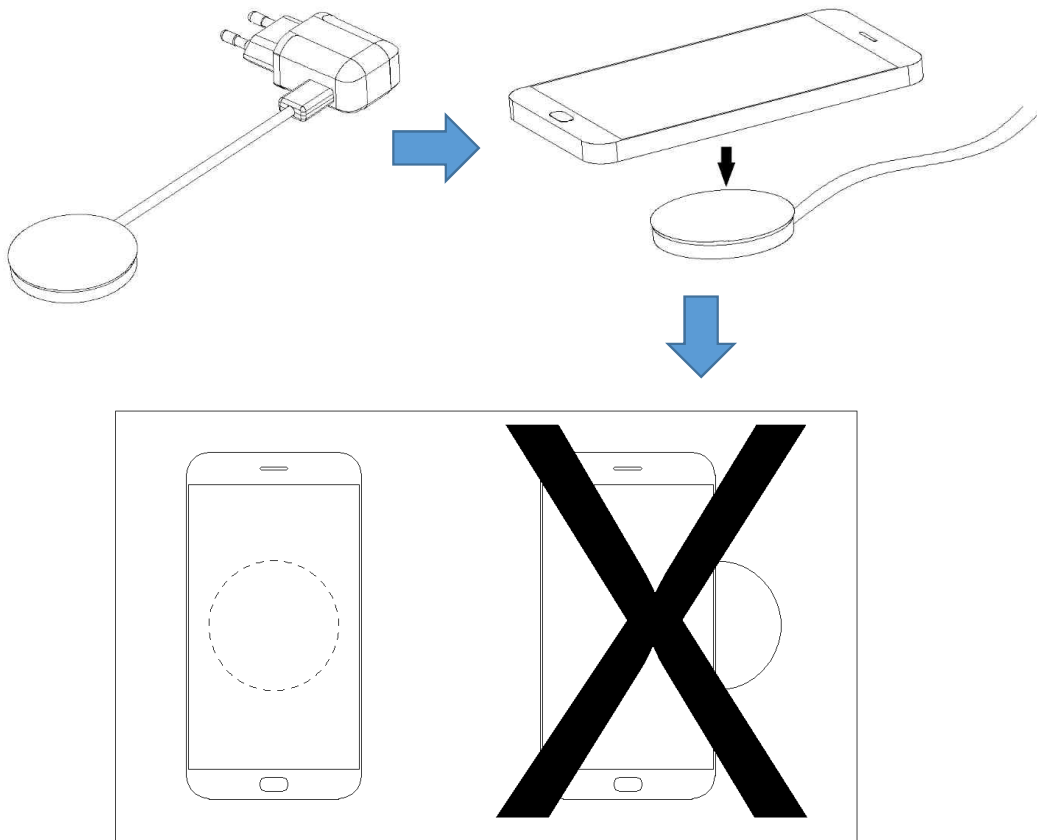
To prevent damage to PWC-1 :

- Do not drop it or knock it off an elevated surface.
- Do not modify, repair, or take it apart.
- Do not clean with alcohol or benzene.
- Keep it away from humidity and dust.
- Do not place heavy objects on it.

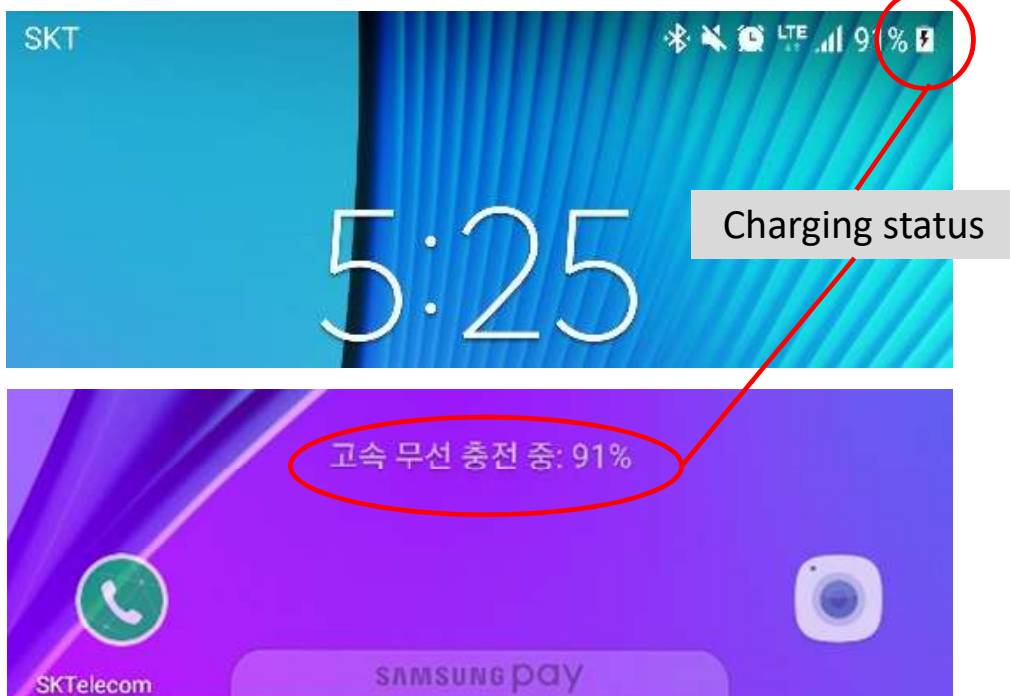
Specification

ITEM	DESCRIPTION
INPUT	DC 5V/1.8A, DC 9V/1.67A
OUTPUT	DC 5V/1A, DC 9V/1A
OPERATION TEMPERATURE	0°C ~40°C
CHARGING DISTANCE	0~5mm
EFFICIENCY	≥72%
Protection	Over voltage protection Over current protection
Charging Indication	Stand by : off Charging : on Error : blinking
Dimension	Ø56.9mm x 7.9mm
Color	White

How to use



To check charging status, look at your phone. If the phone's a sleep, touch the power/Lock key to wake it up. For example, the lock screen includes these indicators:



To prevent damage to PWC-1 :

- Do not drop it or knock it off an elevated surface.
- Do not modify, repair, or take it apart.
- Do not clean with alcohol or benzene.
- Keep it away from humidity and dust.
- Do not place heavy objects on it.

Specification

ITEM	DESCRIPTION
INPUT	DC 5V/1.8A, DC 9V/1.67A
OUTPUT	DC 5V/1A, DC 9V/1A
OPERATION TEMPERATURE	0°C ~40°C
CHARGING DISTANCE	0~5mm
EFFICIENCY	≥72%
Protection	Over voltage protection Over current protection
Charging Indication	Stand by : off Charging : on Error : blinking
Dimension	Ø56.9mm x 7.9mm
Color	White
Frequency	121KHz~205KHz

Use Adapter List

- Use only power supplies listed in the user instructions

Model	Manufacturer
MCS-H06WP, MCS-H06EP, MCS-H06KP, MCS-H06AP, MCS-H06TP, MCS-H06GP, MCS-H06CP, MCS-H07WP, MCS-H07EP, MCS-H07CP, MCS-H07KP, MCS-H07AP, MCS-H07TP, MCS-H07GP.	WEIHAI PNTELECO CO.,LTD

Safety Instruction

- When disconnecting the power supply, always pull On the plug, never on the wire itself.
- Never handle the power plug with wet hands.
- Doing so can lead to fire or electric shock.
- Use certified technicians to service or repair your product.
- Do not open the housing of the device.
- Do not twist or pinch the USB Type C Cable.
- Unplug the device during lightning storms and when unused for extended periods of time.
- Wash hands after handling.
- The user must remain at least 10cm away during charging. The safety test is done at a distance of 10cm. This distance is the safety distance.

- FCC Compliance Statement

This device complies with part 15 of the FCC rules. Operation is subject to the following two conditions: (1) This device may not cause harmful interference, and (2) this device must accept any interference received, including interference that may cause undesired operation.

- FCC Interference Statement

This equipment has been tested and found to comply with the limits for a Class B digital device, pursuant to part 15 of the FCC Rules. These limits are designed to provide reasonable protection against harmful interference in a residential installation. This equipment generates, uses and can radiate radio frequency energy and, if not installed and used in accordance with the instructions, may cause harmful interference to radio communications. However, there is no guarantee that interference will not occur in a particular installation. If this equipment does cause harmful interference to radio or television reception, which can be determined by turning the equipment off and on, the user is encouraged to correct the interference by one of the following measures:

- Reorient or relocate the receiving antenna.
- Increase the separation between the equipment and receiver.
- Connect the equipment into an outlet on a circuit different from which the receiver is connected.
- Consult the dealer or an experienced radio/TV technician for help.

- FCC Caution

Any changes or modifications not expressly approved by the party responsible for compliance could void the user's authority to operate this equipment. This transmitter must not be co-located or operating in conjunction with any other antenna or transmitter.

- FCC Radiation Exposure Statement

This equipment complies with FCC radiation exposure limits set forth for an uncontrolled environment. This equipment should be installed and operated with minimum distance 10 cm between the radiator and your body. This transmitter must not be co-located or operating in conjunction with any other antenna or transmitter.

DANGER: To reduce the risk of electric shock

- Do not plug into an extension cord.
- Supervise children closely. Do not let them play with the device.
- Use this device only for its intended use as described in this manual. Do not use with unauthorized accessories or devices.
- Never operate this device if it has a damaged cord, plug, cable, or housing. If it is not working properly or has been dropped or damaged, return it to the PNTELECOM Service Center for examination and repair.
- keep cord away from heated surfaces.
- This device is designed for indoor use only. Do not use outdoors.
- Place the device on dry surfaces only. After washing the surface, make sure that it is completely dry before replacing the device.
- Do not place metal objects, such as coins or paper clips, on the charger, They can lead to overheating, product damage, or fire.

Manufacturer Information

Model	PWC-1
Manufacturer	WEIHAI PNTELECO CO.,LTD
Homepage	www.pntelecom.co.kr
Address	130, Anyangcheondong-ro, Dongan-gu, Anyang-si, Gyeonggi-do, korea [14040]
TEL	82-31-448-8880
FAX	82-31-448-8882