

# POCKETALK

## VOICE TRANSLATOR POCKETALK

Safety Precautions & FCC Statement

Please check the web for  
the latest information.

<https://rd.snxt.jp/PS537>





# Safety precautions

**WARNING!** Failure to follow these safety instructions could result in fire, electric shock, injury, or damage to the unit or other property. Read all safety instructions before use.

## Before use

Precautions are categorized as "Warning" or "Caution". Follow the precautions during use.

 <b>WARNING</b>	This indicates a description that, if not followed and not properly handled, may result in death or severe injury.
 <b>CAUTION</b>	This indicates a description that, if not followed and not properly handled, may result in minor injury.
<b>NOTICE</b>	This indicates a description that, if not followed and not properly handled, may result in product failure, material damage, or loss of data.

## Handling

### **WARNING**

- Do not operate while walking or driving a car, motorbike, or bicycle.
- Never disassemble, repair, or modify the product.
- Do not apply excessive force.
  - Do not step on or place heavy objects on the product.
  - Do not drop or throw the product.
- Keep the product away from liquids such as water (or drinking water, sweat, seawater, pet urine, etc.).
- Do not allow conductive foreign objects (such as pieces of metal or pencil lead) to enter or come into contact with the USB port of the unit or the connector of the included USB cable. Also, do not allow dust to collect inside.
- Do not damage the included USB cable.
- If there is an abnormality such as odor, noise, smoke, or heat, turn off the product immediately and discontinue use.

### CAUTION

- Do not use, charge, or store in humid, dusty, or extremely hot or cold places.
- Do not touch the product for prolonged periods during use or charging.

### NOTICE

- Do not press the touchscreen display with excessive force or operate it with pointed objects.

## Built-in battery

### WARNING

- Do not leave or store in places of high temperature such as near fire.
- Do not prod with sharp objects (such as nails) or strike with hard objects (such as a hammer).
- If the built-in battery leaks or emits a strange odor, discontinue use immediately and keep it away from fire.
- If the built-in battery leaks, keep it away from clothing or your skin such as your face or hands.
  - Failure to do so may cause damage to your eyes and skin.

## Safety precautions

- Do not attempt to replace the built-in battery yourself. Improper replacement or repair could damage the battery, cause overheating, or result in injury.
- Do not dispose battery in normal trash. The battery must be recycled or disposed of separately from household waste. Do not incinerate battery.
- Make sure that the battery does not get exposed to very cold conditions beyond its operating range, either during use, storage or transporting.
- Avoid areas with low atmospheric pressure such as high altitudes.

## Electromagnetic interference

### WARNING

- Use the product properly in aircraft according to the instructions of the airline.
- In hospitals and places with electronic devices that require high-precision control and weak signals, use the product properly according to the instructions of the administrator.

## Safety precautions

- If you wear electronic medical devices, or use electronic medical devices other than implantable medical devices for home treatment, confirm the effects of electromagnetic waves with the electronic medical device manufacturer or distributor before use.

## When charging

### WARNING

- Use the included USB cable and charge using the specified procedure.
  - Charging with an unspecified procedure may cause battery leakage, heating, or rupture. Also, when charging overseas, use a USB charger that is compatible overseas.
- Using damaged cables or chargers, or charging when moisture is present, can cause fire, electric shock, injury, or damage to the unit or other property.

## When cleaning

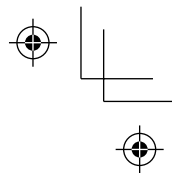
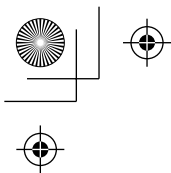
### NOTICE

- Do not use benzene, thinner, or alcohol.
    - Doing so may deteriorate the exterior or dissolve the parts.
- If the product is dirty, wipe it with a soft, dry cloth (such as a cloth for glasses).

## When disposing

### WARNING

- Do not throw away the product with normal trash.
  - This product uses lithium-ion battery, and throwing it away with normal trash may cause a fire. Dispose products that are no longer used according to the ordinances or regulations related to waste disposal of your local authority.



# FCC Statement for the USA

This device complies with Part 15 of the FCC rules. Operation is subject to the following two conditions:

- (1) This device may not cause harmful interference.
- (2) This device must accept any interference received, including interference that may cause undesired operation.

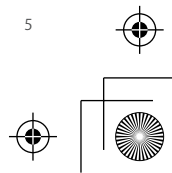
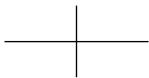
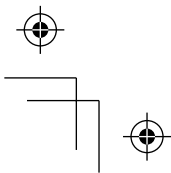
Changes or modifications not expressly approved by the party responsible for compliance could void the user's authority to operate the equipment. This equipment has been tested and found to comply with the limits for a Class B digital device, pursuant to part 15 of the FCC Rules. These limits are designed to provide reasonable protection against harmful interference in a residential installation. This equipment generates, uses and can radiate radio frequency energy and, if not installed and used in accordance with the instructions, may cause harmful interference to radio communications. However, there is no guarantee that interference will not occur in a particular installation. If this equipment does cause harmful interference to radio or television reception, which can be determined by turning the equipment off and on, the user is encouraged to try to correct the interference by one or more of the following measures:

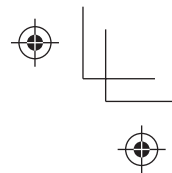
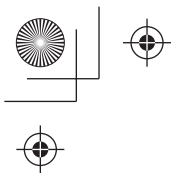
- Reorient or relocate the receiving antenna.
- Increase the separation between the equipment and receiver.
- Connect the equipment into an outlet on a circuit different from that to which the receiver is connected.
- Consult the dealer or an experienced radio/TV technician for help.

This transmitter must not be co-located or operated in conjunction with any other antenna or transmitter.

Please use this product by keeping it more than 5 mm away from your body.

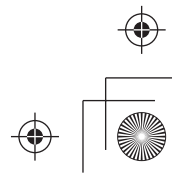
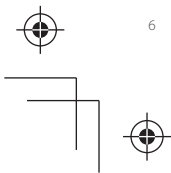
FCC ID: 2AOJA-PTS

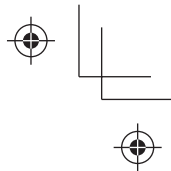
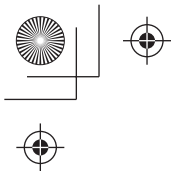




## Radio Wave Exposure and Specific Absorption Rate (SAR) Information

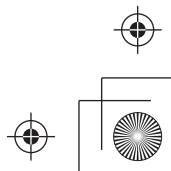
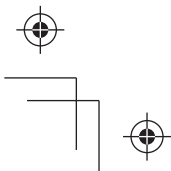
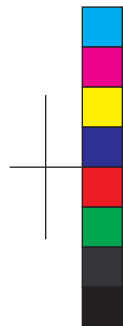
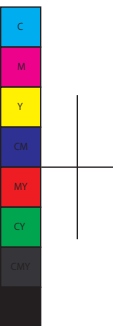
The available scientific evidence does not show that any health problems are associated with using low power wireless devices. There is no proof, however, that these low power wireless devices are absolutely safe. Low power Wireless devices emit low levels of radio frequency energy (RF) in the microwave range while being used. Whereas high levels of RF can produce health effects (by heating tissue), exposure of low-level RF that does not produce heating effects causes no known adverse health effects. Many studies of low-level RF exposures have not found any biological effects. Some studies have suggested that some biological effects might occur, but such findings have not been confirmed by additional research. This equipment has been tested and found to comply with FCC radiation exposure limits set forth for an uncontrolled environment and meets the FCC radio frequency (RF) Exposure Guidelines.

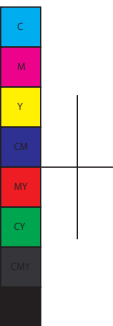
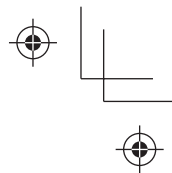
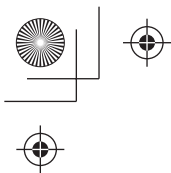




Memo

A series of horizontal lines for writing, starting with a ruler-like scale at the top and ending with another ruler-like scale at the bottom.





### Revision history

Version	Date-of-issue	Detail of revision
PS-191213-1-US	12/13/2019	First edition

