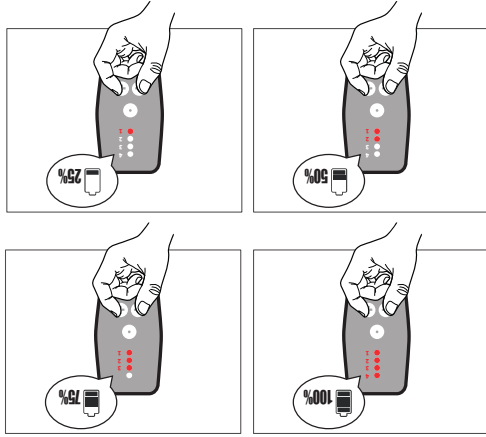
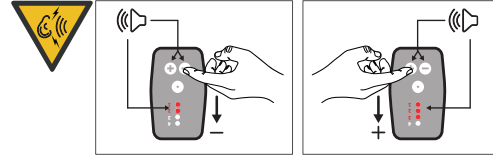


SPECIFICATIONS
 Battery: 3.7V 500mAh rechargeable
 Battery duration in use: 8h
 Battery duration on stock: 50 days
 Recharge time: 2h depending on the charger
 Max communication distance: 300m/1000ft



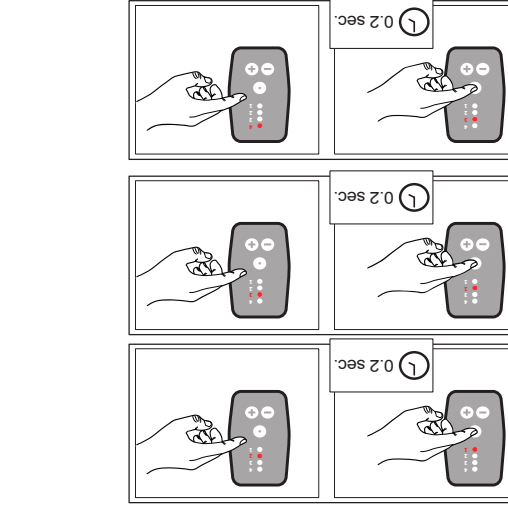
Checking unit Charge Level
 Unit ON, press Button 2 and Button 3 at the same time, the LEDs will show battery charge status (4 LEDs on > battery fully charged, 1 LED on > battery needs to be recharged).



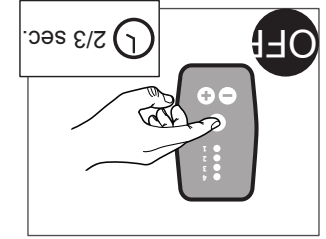
Turn Up/down the Volume:
 ST has 4 volume levels. Press Button 2 to turn up the volume, press Button 3 to lower it. If you hold one of the volume buttons you will see the corresponding level shown by the LEDs. When you turn OFF your ST the last volume level will be remembered.

Once turned OFF/ON, Snorkie Talkie will remember the last selected channel. Snorkie Talkie will also remember last selected volume.

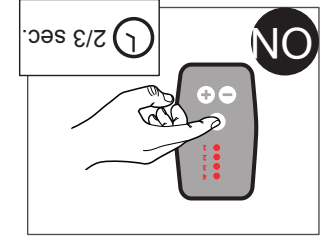
ST CHANNEL	RADIO CHANNEL	FREQUENCY [MHz]
1	8	467.5625
2	9	467.5875
3	10	467.6125
4	11	467.6375
1	2	446.01875
2	4	446.04375
3	6	446.06875
4	8	446.09375



Changing Channel
 When the unit is ON the selected channel is displayed (one LED only per time), Press Button 1 quickly to switch to a different channel. Your ST operates in FRS or PMR446 radio band following the table below.
 • Button 1: – CHANNEL CHANGE



Turn Off the ST:
 Press Button 1 for 2 seconds. The LEDs will turn off, indicating the device is not operating.



Turn On the ST:
 Press Button 1 for 2 seconds. The 4 LEDs will blink in sequence three times. Now ST is ready to operate.

Snorkeling Communication System Instruction Manual

- OCEAN REEF Snorkie-Talkie is a radio communication system to be used in combination with OCEAN REEF – made Full Face snorkeling masks (Aria, SeaVuDry, Sport and UNO masks). **(Not suitable for other brand masks)**
- It's a UHF system like a walkie talkie. As it is working on standard frequencies, it may communicate with most of other radio systems using the same frequencies check Snorkie Talkie operation frequencies at page: ___? Or on our website.
- **⚠ WARNING!** Respect local regulations regarding free-to-use frequencies when traveling outside of country of purchase. .
- You can communicate with any other Snorkie Talkie, Snorkie Talkie land unit, or standard radio, as long as the units are all on the same frequency, within 900ft – 300m radius .

WHAT'S INCLUDED



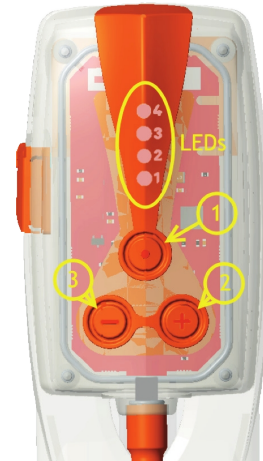
Snorkie Talkie Unit



MICRO USB Cable

OPERATING

- Button 1: ON / OFF
- Button 1: – CHANNEL CHANGE
- Button 2: VOLUME UP
- Button 3: VOLUME DOWN



WARNINGS
 This equipment has been tested and found to comply with the limits for a Class B digital device, pursuant to part 15 of the FCC Rules. These limits are designed to provide reasonable protection against harmful interference in a residential installation. This equipment generates, uses and can radiate radio frequency energy and, if not installed and used in accordance with the instructions, may cause harmful interference to radio communications. However, there is no guarantee that interference will not occur in a particular installation. If this equipment does cause harmful interference to radio or television reception, which can be determined by turning the equipment off and on, the user is encouraged to try to correct the interference by one or more of the following measures:
 - Reorient or relocate the receiving antenna.
 - Increase the separation between the equipment and receiver.
 - Connect the equipment into an outlet on a circuit different from that to which the receiver is connected.
 - Consult the dealer or an experienced radio/TV technician for help.

Modifications: Any modifications made to this device that are not approved by Mestel Safety Srl may void the authority granted to the user by the FCC to operate this equipment.

This device complies with Part 95 of the FCC Rules. Operation is subject to the following two conditions: (1) this device may not cause harmful interference, and (2) this device must accept any interference received, including interference that may cause undesired operations.

This device is designed and tested to comply with a number of international standards and guidelines for human exposure to radio frequency electromagnetic energy. It has been authorized by FCC, so no violation of FCC rules is allowed. Any adjustment and/or modification must be performed only by the manufacturer under the supervision and responsibility of a certified body. No replacement of any transmitter component resulting on a violation of the FCC rules is permitted. Snorkie-Talkie must be safely used following the instructions collected in this manual.

FCC ID: 2A0IS020816

snorkie-talkie

by **OCEANREEF®**
 underwater, naturally.

Instruction Manual



Ocean Reef Group



OCEANREEF
 underwater, naturally.
 SAFETY



protection equipment
 engineering
 electronics

MESTEL SAFETY Srl
 Via Arvigo, 2
 16010 Sant'Olcese
 Genova (Italia)
 Tel. +39 010 7082011
 Fax +39 010 7082099

OCEAN REEF Inc
 1699 La Costa Meadows Dr. Suite 101
 San Marcos, CA 92078
 Phone +1 760 744 9430
 Fax +1 760 744 9525
 Toll free 1 800 922 1764



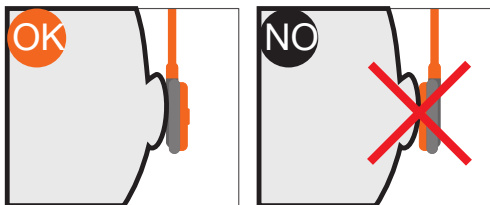
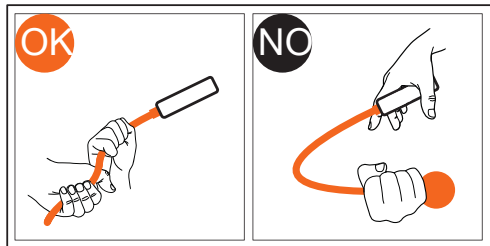
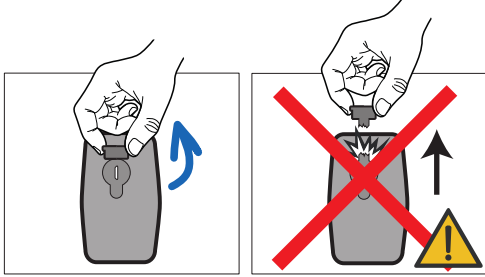
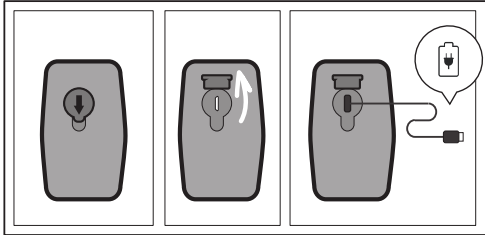
snorkeling.oceanreefgroup.com
 oceanreefgroup.com



Charging the Unit

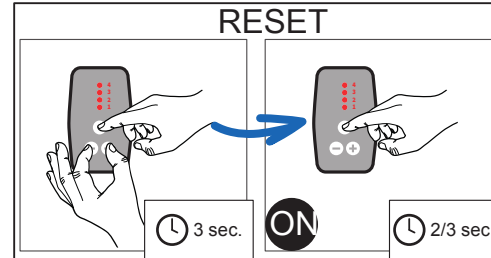
In the back part of the ST open the black rubber plug (check the arrow for direction), connect micro USB socket underneath to USB cable, connect the USB cable to a 5v power supply.

The LEDs will blink in sequence until the battery will be fully charged than they will turn off.

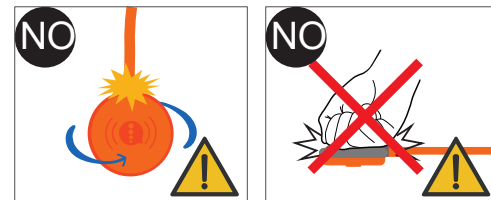
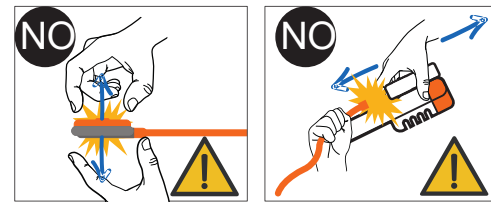


RESET the unit.

Sometimes after a charging cycle, or after being discharged for a long period of time, the unit might behave strangely. If this is the case you can proceed with Resetting the Unit. Press Button 1,2,3 at the same time for 3 seconds than turn on the unit.



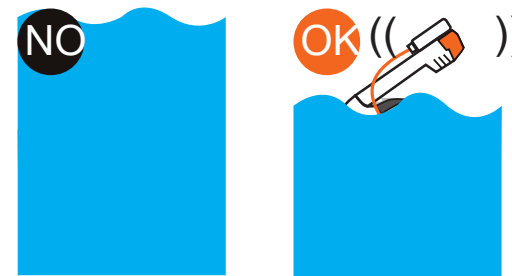
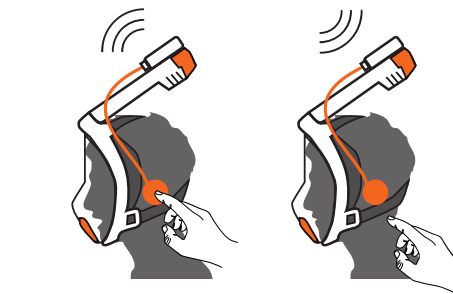
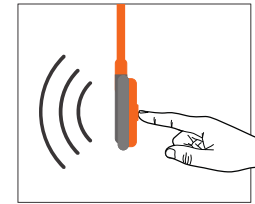
Do NOT try to remove the Hear piece from the main unit and the flexible tube.



TALKING AND LISTENING

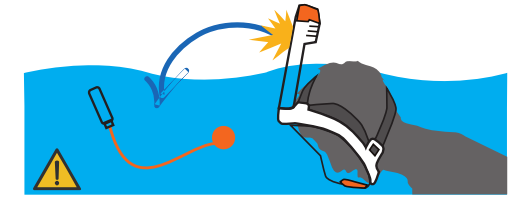
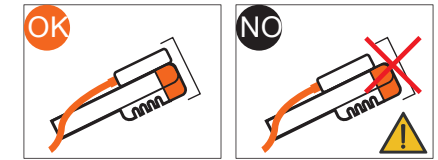
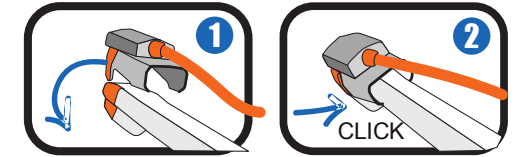
Unit ON, default = listening mode.

Pushing the hear piece on the external orange rubber cap will activate the PTT (Push To Talk) button, press it and hold it down until you finish your speech and then release it, it will take you automatically back to the receiving mode.



The Hear piece with the Speaker and PTT button is connected to the main body with a flexible tube with a special silicone cover, this is allowing to place the speaker both on the right or on the left hear.

Always bend the tube by handling the two extremities and NOT by the main unit and the speaker.



- ⚠ **WARNING!** NOT FOR DIVING! Waterproof to 3m/10ft.
- ⚠ **WARNING!** Communication clarity and distance may depend on environment.
- ⚠ **WARNING!** Not a cellular phone, expect to speak slowly and clearly for maximum intelligibility. Sounds of the water may make it difficult to hear perfectly. Talk slowly and take your time. Signal end of your communication to tell your listeners they are now free to reply by pressing their button.
- ⚠ **WARNING!** Being it a Push To Talk system, like all walkie-talkie units, if one talks, all other units can only listen. 1 at a time talking.
- ⚠ **WARNING!** It is not a safety product. Always rely on fins and vest if unsecure about buoyancy. Rely on information given by Lifeguards.
- ⚠ **WARNING!** This product will not be connected to lifeguard frequencies automatically.
- ⚠ **WARNING!** Before normal snorkeling session use, check battery level!

