

GRYPHON

Love the Connection

Quick Start Guide

Gryphon: Secure WiFi Router Setup Guide

What's Inside:

- 1 Gryphon WiFi Router
- 1 12V Power Supply
- 1 Ethernet Cable



Installation

Step 1

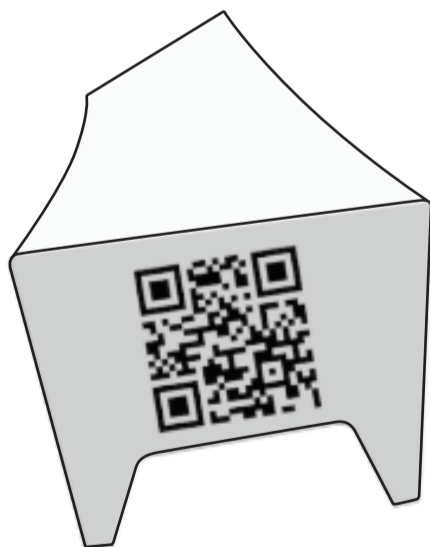


Download the Gryphon Connect App from the iOS or Android store

Step 2

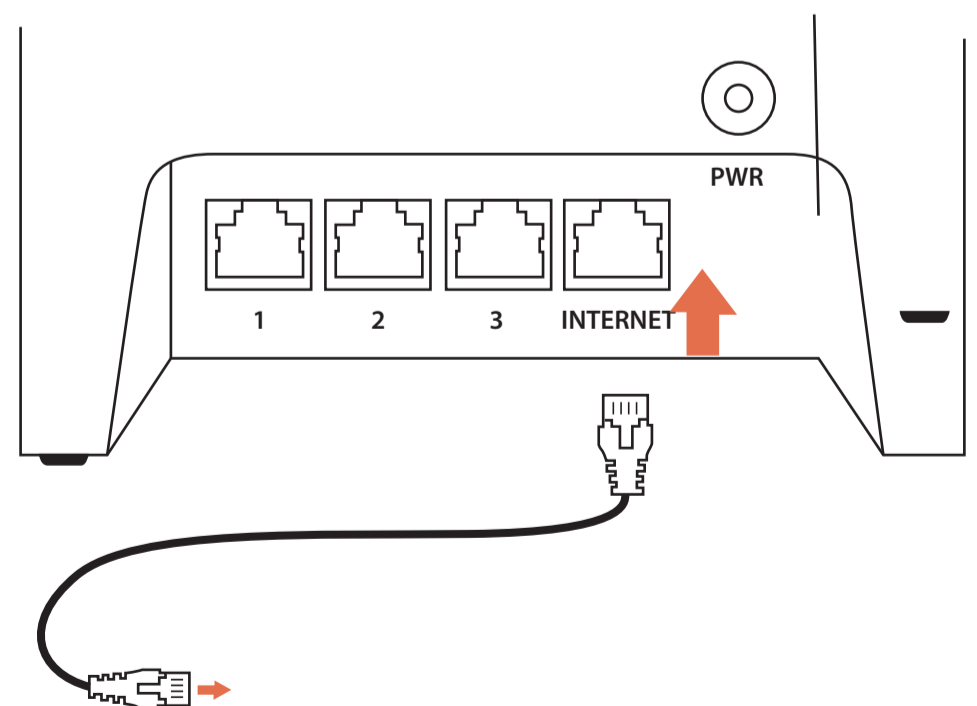
Open the App, create a login, and follow the instructions

Step 3



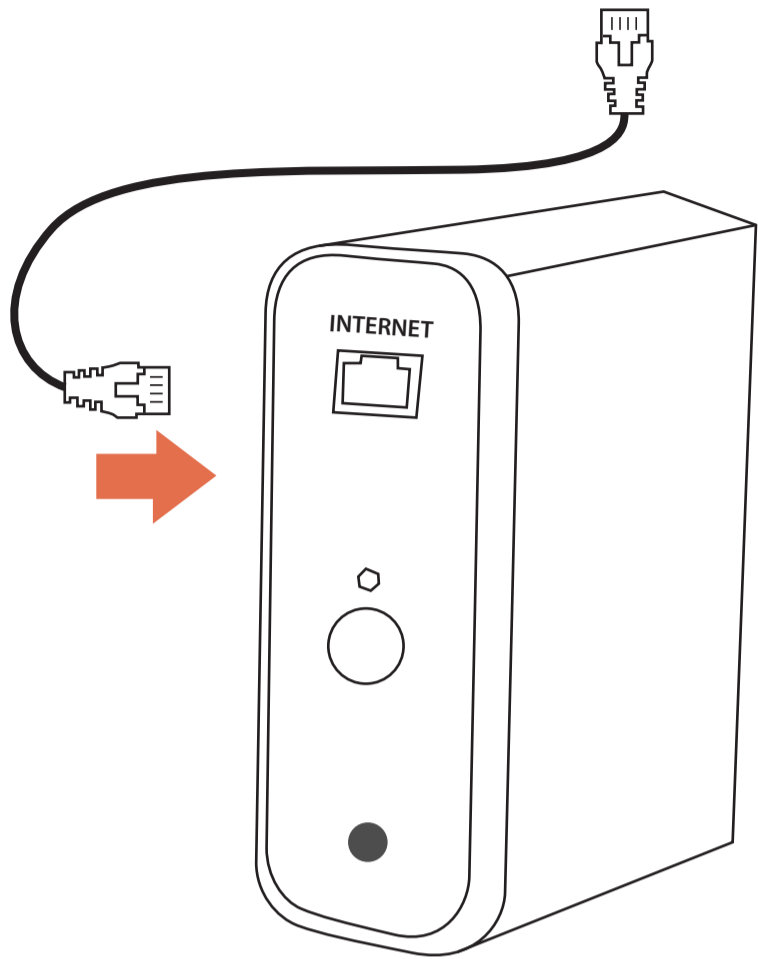
Your QR code can be found on the bottom of the Gryphon router

Step 4



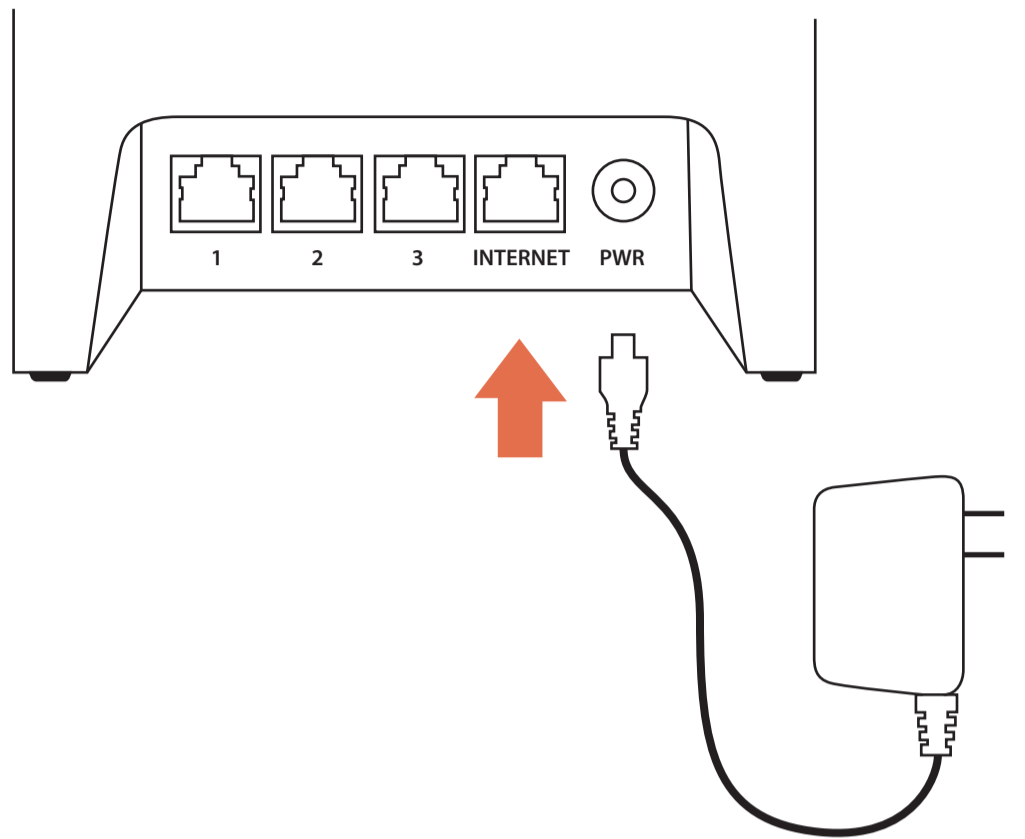
Plug one end of the Ethernet cable to Gryphon's Internet port.

Step 5



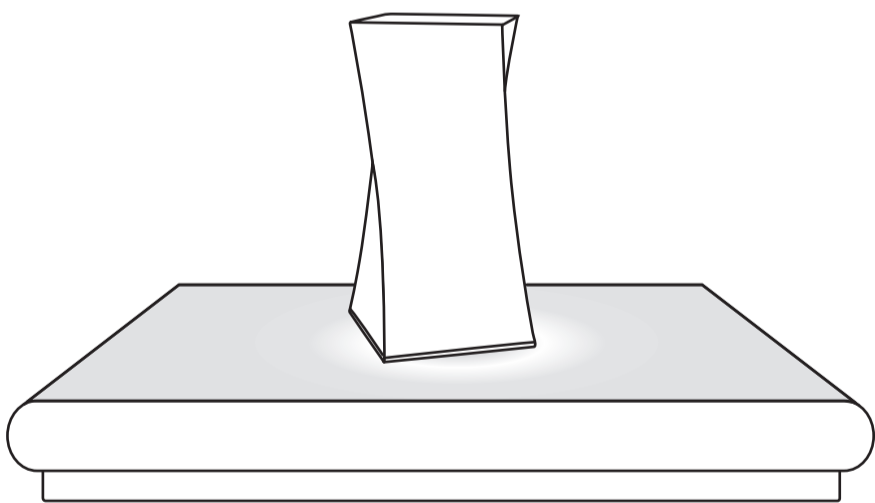
Plug the other end of the Ethernet cable to the Ethernet port of your cable or DSL modem.

Step 6



Plug in the 12V power adaptor for Gryphon

Step 7



Wait for the light on the bottom of Gryphon to start flashing and pair with the Gryphonrouter.

Step 8

Set the SSID and WiFi password. Click done and you can start using the App to manage your Gryphon network.

Specifications

WiFi

- * 802.11bgn and AC
- * 3Gbps overall throughput
- * Comprehensive WiFi security
- * Simultaneous tri-band radios (2.4GHz, 2x 5GHz)
- * 4x4 MU-MIMO
- * Antenna beamforming
- * Wireless mesh (with double pack)
- * 6 high power internal antennas
- * Guest WiFi

Others

- Power Supply
12vDC
- Memory
512MB RAM, 4GB Flash
- Smartphone App:
iOS, Android

Federal Communication Commission Interference Statement

This device complies with Part 15 of the FCC Rules. Operation is subject to the following two conditions: (1) This device may not cause harmful interference, and (2) this device must accept any interference received, including interference that may cause undesired operation.

This equipment has been tested and found to comply with the limits for a Class B digital device, pursuant to Part 15 of the FCC Rules. These limits are designed to provide reasonable protection against harmful interference in a residential installation. This equipment generates, uses and can radiate radio frequency energy and, if not installed and used in accordance with the instructions, may cause harmful interference to radio communications. However, there is no guarantee that interference will not occur in a particular installation. If this equipment does cause harmful interference to radio or television reception, which can be determined by turning the equipment off and on, the user is encouraged to try to correct the interference by one of the following measures:

- Reorient or relocate the receiving antenna.
- Increase the separation between the equipment and receiver.
- Connect the equipment into an outlet on a circuit different from that to which the receiver is connected.
- Consult the dealer or an experienced radio/TV technician for help.

FCC Caution: Any changes or modifications not expressly approved by the party responsible for compliance could void the user's authority to operate this equipment.

This transmitter must not be co-located or operating in conjunction with any other antenna or transmitter.

Operations in the 5.15-5.25GHz band are restricted to indoor usage only.

FOR MOBILE DEVICE USAGE (>20cm/low power)

Radiation Exposure Statement:

This equipment complies with FCC radiation exposure limits set forth for an uncontrolled environment. This equipment should be installed and operated with minimum distance 38cm between the radiator & your body.