



EX3DV4- SN:3759

December 16, 2016

10081-CAB	CDMA2000 (1xRTT, RC3)	X	0.80	65.24	12.08	0.00	150.0	± 9.6 %
		Y	0.85	65.56	12.59		150.0	
		Z	0.82	65.35	12.34		150.0	
10082-CAB	IS-54 / IS-136 FDD (TDMA/FDM, PI/4-DQPSK, Fullrate)	X	0.68	58.27	3.79	4.77	80.0	± 9.6 %
		Y	0.86	60.00	4.99		80.0	
		Z	0.80	58.87	4.46		80.0	
10090-DAC	GPRS-FDD (TDMA, GMSK, TN 0-4)	X	100.00	110.24	24.94	6.56	60.0	± 9.6 %
		Y	100.00	111.45	25.55		60.0	
		Z	61.75	105.66	24.37		60.0	
10097-CAB	UMTS-FDD (HSDPA)	X	1.80	67.24	15.39	0.00	150.0	± 9.6 %
		Y	1.81	67.18	15.46		150.0	
		Z	1.80	67.11	15.37		150.0	
10098-CAB	UMTS-FDD (HSUPA, Sublest 2)	X	1.76	67.18	15.35	0.00	150.0	± 9.6 %
		Y	1.78	67.13	15.43		150.0	
		Z	1.76	67.04	15.33		150.0	
10099-DAC	EDGE-FDD (TDMA, 8PSK, TN 0-4)	X	8.51	87.74	30.17	9.56	60.0	± 9.6 %
		Y	11.43	95.53	33.48		60.0	
		Z	8.91	87.61	29.83		60.0	
10100-CAC	LTE-FDD (SC-FDMA, 100% RB, 20 MHz, QPSK)	X	3.05	69.78	16.46	0.00	150.0	± 9.6 %
		Y	3.13	70.04	16.53		150.0	
		Z	3.07	69.82	16.43		150.0	
10101-CAC	LTE-FDD (SC-FDMA, 100% RB, 20 MHz, 16-QAM)	X	3.21	67.25	15.78	0.00	150.0	± 9.6 %
		Y	3.26	67.38	15.84		150.0	
		Z	3.23	67.28	15.77		150.0	
10102-CAC	LTE-FDD (SC-FDMA, 100% RB, 20 MHz, 64-QAM)	X	3.31	67.26	15.89	0.00	150.0	± 9.6 %
		Y	3.37	67.35	15.94		150.0	
		Z	3.34	67.28	15.89		150.0	
10103-CAC	LTE-TDD (SC-FDMA, 100% RB, 20 MHz, QPSK)	X	5.95	73.98	19.42	3.98	65.0	± 9.6 %
		Y	6.46	75.28	20.05		65.0	
		Z	5.88	73.30	19.04		65.0	
10104-CAC	LTE-TDD (SC-FDMA, 100% RB, 20 MHz, 16-QAM)	X	6.15	72.74	19.68	3.98	65.0	± 9.6 %
		Y	6.50	73.70	20.23		65.0	
		Z	6.36	72.92	19.68		65.0	
10105-CAC	LTE-TDD (SC-FDMA, 100% RB, 20 MHz, 64-QAM)	X	5.78	71.44	19.39	3.98	65.0	± 9.6 %
		Y	6.20	72.69	20.09		65.0	
		Z	6.26	72.53	19.82		65.0	
10108-CAD	LTE-FDD (SC-FDMA, 100% RB, 10 MHz, QPSK)	X	2.66	69.02	16.27	0.00	150.0	± 9.6 %
		Y	2.74	69.24	16.34		150.0	
		Z	2.69	69.04	16.24		150.0	
10109-CAD	LTE-FDD (SC-FDMA, 100% RB, 10 MHz, 16-QAM)	X	2.86	67.09	15.67	0.00	150.0	± 9.6 %
		Y	2.92	67.19	15.74		150.0	
		Z	2.89	67.10	15.67		150.0	
10110-CAD	LTE-FDD (SC-FDMA, 100% RB, 5 MHz, QPSK)	X	2.15	68.08	15.82	0.00	150.0	± 9.6 %
		Y	2.23	68.29	15.94		150.0	
		Z	2.18	68.07	15.80		150.0	
10111-CAD	LTE-FDD (SC-FDMA, 100% RB, 5 MHz, 16-QAM)	X	2.58	67.97	15.95	0.00	150.0	± 9.6 %
		Y	2.63	67.86	15.99		150.0	
		Z	2.60	67.91	15.97		150.0	



EX3DV4- SN:3759

December 16, 2016

10112-CAD	LTE-FDD (SC-FDMA, 100% RB, 10 MHz, 64-QAM)	X	2.99	67.13	15.75	0.00	150.0	± 9.6 %
		Y	3.05	67.18	15.80		150.0	
		Z	3.01	67.13	15.74		150.0	
10113-CAD	LTE-FDD (SC-FDMA, 100% RB, 5 MHz, 64-QAM)	X	2.73	68.15	16.11	0.00	150.0	± 9.6 %
		Y	2.78	68.00	16.13		150.0	
		Z	2.76	68.09	16.12		150.0	
10114-CAB	IEEE 802.11n (HT Greenfield, 13.5 Mbps, BPSK)	X	5.12	67.14	16.40	0.00	150.0	± 9.6 %
		Y	5.16	67.11	16.38		150.0	
		Z	5.14	67.13	16.37		150.0	
10115-CAB	IEEE 802.11n (HT Greenfield, 81 Mbps, 16-QAM)	X	5.39	67.23	16.45	0.00	150.0	± 9.6 %
		Y	5.47	67.32	16.49		150.0	
		Z	5.43	67.27	16.45		150.0	
10116-CAB	IEEE 802.11n (HT Greenfield, 135 Mbps, 64-QAM)	X	5.20	67.31	16.41	0.00	150.0	± 9.6 %
		Y	5.26	67.33	16.42		150.0	
		Z	5.23	67.32	16.39		150.0	
10117-CAB	IEEE 802.11n (HT Mixed, 13.5 Mbps, BPSK)	X	5.08	66.99	16.34	0.00	150.0	± 9.6 %
		Y	5.13	67.01	16.35		150.0	
		Z	5.10	67.00	16.32		150.0	
10118-CAB	IEEE 802.11n (HT Mixed, 81 Mbps, 16-QAM)	X	5.47	67.43	16.56	0.00	150.0	± 9.6 %
		Y	5.55	67.51	16.60		150.0	
		Z	5.51	67.48	16.56		150.0	
10119-CAB	IEEE 802.11n (HT Mixed, 135 Mbps, 64-QAM)	X	5.19	67.27	16.40	0.00	150.0	± 9.6 %
		Y	5.23	67.26	16.40		150.0	
		Z	5.21	67.26	16.38		150.0	
10140-CAC	LTE-FDD (SC-FDMA, 100% RB, 15 MHz, 16-QAM)	X	3.35	67.26	15.81	0.00	150.0	± 9.6 %
		Y	3.41	67.36	15.86		150.0	
		Z	3.37	67.28	15.80		150.0	
10141-CAC	LTE-FDD (SC-FDMA, 100% RB, 15 MHz, 64-QAM)	X	3.47	67.39	16.00	0.00	150.0	± 9.6 %
		Y	3.53	67.45	16.03		150.0	
		Z	3.50	67.41	15.99		150.0	
10142-CAD	LTE-FDD (SC-FDMA, 100% RB, 3 MHz, QPSK)	X	1.92	68.04	15.43	0.00	150.0	± 9.6 %
		Y	2.00	68.21	15.62		150.0	
		Z	1.95	68.01	15.47		150.0	
10143-CAD	LTE-FDD (SC-FDMA, 100% RB, 3 MHz, 16-QAM)	X	2.43	68.67	15.60	0.00	150.0	± 9.6 %
		Y	2.48	68.53	15.74		150.0	
		Z	2.46	68.63	15.70		150.0	
10144-CAD	LTE-FDD (SC-FDMA, 100% RB, 3 MHz, 64-QAM)	X	2.19	66.27	13.92	0.00	150.0	± 9.6 %
		Y	2.28	66.45	14.25		150.0	
		Z	2.23	66.33	14.07		150.0	
10145-CAD	LTE-FDD (SC-FDMA, 100% RB, 1.4 MHz, QPSK)	X	1.16	64.50	11.31	0.00	150.0	± 9.6 %
		Y	1.29	65.42	12.29		150.0	
		Z	1.24	65.05	11.89		150.0	
10146-CAD	LTE-FDD (SC-FDMA, 100% RB, 1.4 MHz, 16-QAM)	X	1.75	64.91	10.68	0.00	150.0	± 9.6 %
		Y	2.10	66.86	12.19		150.0	
		Z	1.85	65.40	11.22		150.0	
10147-CAD	LTE-FDD (SC-FDMA, 100% RB, 1.4 MHz, 64-QAM)	X	1.99	66.41	11.55	0.00	150.0	± 9.6 %
		Y	2.48	68.95	13.31		150.0	
		Z	2.12	67.01	12.15		150.0	



EX3DV4- SN:3759

December 16, 2016

10149-CAC	LTE-FDD (SC-FDMA, 50% RB, 20 MHz, 16-QAM)	X	2.87	67.16	15.72	0.00	150.0	± 9.6 %
		Y	2.93	67.25	15.78		150.0	
		Z	2.90	67.17	15.71		150.0	
10150-CAC	LTE-FDD (SC-FDMA, 50% RB, 20 MHz, 64-QAM)	X	3.00	67.19	15.79	0.00	150.0	± 9.6 %
		Y	3.05	67.23	15.84		150.0	
		Z	3.02	67.19	15.79		150.0	
10151-CAC	LTE-TDD (SC-FDMA, 50% RB, 20 MHz, QPSK)	X	6.19	76.09	20.32	3.98	65.0	± 9.6 %
		Y	6.72	77.39	20.98		65.0	
		Z	6.36	75.98	20.19		65.0	
10152-CAC	LTE-TDD (SC-FDMA, 50% RB, 20 MHz, 16-QAM)	X	5.64	72.49	19.24	3.98	65.0	± 9.6 %
		Y	6.02	73.58	19.91		65.0	
		Z	5.85	72.65	19.26		65.0	
10153-CAC	LTE-TDD (SC-FDMA, 50% RB, 20 MHz, 64-QAM)	X	6.03	73.53	20.06	3.98	65.0	± 9.6 %
		Y	6.38	74.47	20.65		65.0	
		Z	6.24	73.66	20.07		65.0	
10154-CAD	LTE-FDD (SC-FDMA, 50% RB, 10 MHz, QPSK)	X	2.20	68.51	16.09	0.00	150.0	± 9.6 %
		Y	2.28	68.70	16.20		150.0	
		Z	2.23	68.51	16.09		150.0	
10155-CAD	LTE-FDD (SC-FDMA, 50% RB, 10 MHz, 16-QAM)	X	2.58	67.98	15.97	0.00	150.0	± 9.6 %
		Y	2.63	67.87	16.01		150.0	
		Z	2.61	67.92	15.98		150.0	
10156-CAD	LTE-FDD (SC-FDMA, 50% RB, 5 MHz, QPSK)	X	1.76	68.06	15.17	0.00	150.0	± 9.6 %
		Y	1.85	68.29	15.45		150.0	
		Z	1.80	68.08	15.26		150.0	
10157-CAD	LTE-FDD (SC-FDMA, 50% RB, 5 MHz, 16-QAM)	X	2.02	66.77	13.91	0.00	150.0	± 9.6 %
		Y	2.12	66.99	14.30		150.0	
		Z	2.07	66.86	14.11		150.0	
10158-CAD	LTE-FDD (SC-FDMA, 50% RB, 10 MHz, 64-QAM)	X	2.74	68.22	16.16	0.00	150.0	± 9.6 %
		Y	2.79	68.06	16.17		150.0	
		Z	2.77	68.16	16.17		150.0	
10159-CAD	LTE-FDD (SC-FDMA, 50% RB, 5 MHz, 64-QAM)	X	2.12	67.25	14.20	0.00	150.0	± 9.6 %
		Y	2.23	67.45	14.59		150.0	
		Z	2.18	67.37	14.42		150.0	
10160-CAC	LTE-FDD (SC-FDMA, 50% RB, 15 MHz, QPSK)	X	2.69	68.25	16.09	0.00	150.0	± 9.6 %
		Y	2.75	68.31	16.13		150.0	
		Z	2.71	68.19	16.05		150.0	
10161-CAC	LTE-FDD (SC-FDMA, 50% RB, 15 MHz, 16-QAM)	X	2.89	67.14	15.71	0.00	150.0	± 9.6 %
		Y	2.95	67.16	15.77		150.0	
		Z	2.92	67.13	15.72		150.0	
10162-CAC	LTE-FDD (SC-FDMA, 50% RB, 15 MHz, 64-QAM)	X	3.00	67.31	15.83	0.00	150.0	± 9.6 %
		Y	3.06	67.29	15.87		150.0	
		Z	3.03	67.28	15.83		150.0	
10166-CAD	LTE-FDD (SC-FDMA, 50% RB, 1.4 MHz, QPSK)	X	3.52	69.26	18.89	3.01	150.0	± 9.6 %
		Y	3.63	69.41	18.97		150.0	
		Z	3.54	68.96	18.65		150.0	
10167-CAD	LTE-FDD (SC-FDMA, 50% RB, 1.4 MHz, 16-QAM)	X	4.34	72.30	19.40	3.01	150.0	± 9.6 %
		Y	4.53	72.61	19.56		150.0	
		Z	4.33	71.71	19.05		150.0	





EX3DV4- SN:3759

December 16, 2016

10168-CAD	LTE-FDD (SC-FDMA, 50% RB, 1.4 MHz, 64-QAM)	X	4.92	75.00	20.95	3.01	150.0	± 9.6 %
		Y	5.05	74.92	20.91		150.0	
		Z	4.86	74.20	20.52		150.0	
10169-CAC	LTE-FDD (SC-FDMA, 1 RB, 20 MHz, QPSK)	X	2.94	68.69	18.63	3.01	150.0	± 9.6 %
		Y	3.06	69.43	19.00		150.0	
		Z	2.97	68.51	18.42		150.0	
10170-CAC	LTE-FDD (SC-FDMA, 1 RB, 20 MHz, 16-QAM)	X	4.15	75.29	21.28	3.01	150.0	± 9.6 %
		Y	4.43	76.35	21.68		150.0	
		Z	4.11	74.52	20.83		150.0	
10171-AAC	LTE-FDD (SC-FDMA, 1 RB, 20 MHz, 64-QAM)	X	3.30	70.50	18.18	3.01	150.0	± 9.6 %
		Y	3.54	71.68	18.72		150.0	
		Z	3.31	70.02	17.86		150.0	
10172-CAC	LTE-TDD (SC-FDMA, 1 RB, 20 MHz, QPSK)	X	5.72	82.17	24.47	6.02	65.0	± 9.6 %
		Y	9.41	91.72	28.09		65.0	
		Z	7.05	84.62	25.03		65.0	
10173-CAC	LTE-TDD (SC-FDMA, 1 RB, 20 MHz, 16-QAM)	X	10.09	89.06	25.03	6.02	65.0	± 9.6 %
		Y	16.80	97.79	27.98		65.0	
		Z	9.48	86.64	24.01		65.0	
10174-CAC	LTE-TDD (SC-FDMA, 1 RB, 20 MHz, 64-QAM)	X	7.37	83.04	22.50	6.02	65.0	± 9.6 %
		Y	11.94	90.83	25.28		65.0	
		Z	6.31	79.38	21.04		65.0	
10175-CAD	LTE-FDD (SC-FDMA, 1 RB, 10 MHz, QPSK)	X	2.90	68.35	18.36	3.01	150.0	± 9.6 %
		Y	3.02	69.11	18.74		150.0	
		Z	2.93	68.17	18.15		150.0	
10176-CAD	LTE-FDD (SC-FDMA, 1 RB, 10 MHz, 16-QAM)	X	4.15	75.31	21.29	3.01	150.0	± 9.6 %
		Y	4.43	76.38	21.69		150.0	
		Z	4.12	74.55	20.84		150.0	
10177-CAF	LTE-FDD (SC-FDMA, 1 RB, 5 MHz, QPSK)	X	2.92	68.51	18.47	3.01	150.0	± 9.6 %
		Y	3.05	69.27	18.84		150.0	
		Z	2.95	68.34	18.26		150.0	
10178-CAD	LTE-FDD (SC-FDMA, 1 RB, 5 MHz, 16-QAM)	X	4.11	75.05	21.16	3.01	150.0	± 9.6 %
		Y	4.38	76.11	21.55		150.0	
		Z	4.07	74.28	20.70		150.0	
10179-CAD	LTE-FDD (SC-FDMA, 1 RB, 10 MHz, 64-QAM)	X	3.67	72.68	19.56	3.01	150.0	± 9.6 %
		Y	3.93	73.84	20.04		150.0	
		Z	3.66	72.05	19.16		150.0	
10180-CAD	LTE-FDD (SC-FDMA, 1 RB, 5 MHz, 64-QAM)	X	3.29	70.43	18.13	3.01	150.0	± 9.6 %
		Y	3.53	71.60	18.66		150.0	
		Z	3.30	69.94	17.80		150.0	
10181-CAC	LTE-FDD (SC-FDMA, 1 RB, 15 MHz, QPSK)	X	2.92	68.49	18.46	3.01	150.0	± 9.6 %
		Y	3.04	69.25	18.83		150.0	
		Z	2.95	68.32	18.25		150.0	
10182-CAC	LTE-FDD (SC-FDMA, 1 RB, 15 MHz, 16-QAM)	X	4.10	75.03	21.14	3.01	150.0	± 9.6 %
		Y	4.37	76.08	21.54		150.0	
		Z	4.06	74.26	20.69		150.0	
10183-AAB	LTE-FDD (SC-FDMA, 1 RB, 15 MHz, 64-QAM)	X	3.29	70.40	18.12	3.01	150.0	± 9.6 %
		Y	3.52	71.58	18.65		150.0	
		Z	3.30	69.92	17.79		150.0	



EX3DV4- SN:3759

December 16, 2016

10184-CAD	LTE-FDD (SC-FDMA, 1 RB, 3 MHz, QPSK)	X	2.93	68.54	18.48	3.01	150.0	± 9.6 %
		Y	3.05	69.29	18.86		150.0	
		Z	2.96	68.36	18.28		150.0	
10185-CAD	LTE-FDD (SC-FDMA, 1 RB, 3 MHz, 16-QAM)	X	4.12	75.11	21.19	3.01	150.0	± 9.6 %
		Y	4.39	76.16	21.58		150.0	
		Z	4.08	74.34	20.73		150.0	
10186-AAD	LTE-FDD (SC-FDMA, 1 RB, 3 MHz, 64-QAM)	X	3.30	70.47	18.15	3.01	150.0	± 9.6 %
		Y	3.54	71.65	18.69		150.0	
		Z	3.31	69.98	17.83		150.0	
10187-CAD	LTE-FDD (SC-FDMA, 1 RB, 1.4 MHz, QPSK)	X	2.94	68.60	18.55	3.01	150.0	± 9.6 %
		Y	3.06	69.34	18.92		150.0	
		Z	2.97	68.41	18.34		150.0	
10188-CAD	LTE-FDD (SC-FDMA, 1 RB, 1.4 MHz, 16-QAM)	X	4.28	75.90	21.62	3.01	150.0	± 9.6 %
		Y	4.56	76.93	22.00		150.0	
		Z	4.23	75.10	21.16		150.0	
10189-AAD	LTE-FDD (SC-FDMA, 1 RB, 1.4 MHz, 64-QAM)	X	3.38	70.93	18.45	3.01	150.0	± 9.6 %
		Y	3.63	72.12	18.98		150.0	
		Z	3.39	70.42	18.11		150.0	
10193-CAB	IEEE 802.11n (HT Greenfield, 6.5 Mbps, BPSK)	X	4.51	66.56	16.08	0.00	150.0	± 9.6 %
		Y	4.56	66.52	16.10		150.0	
		Z	4.53	66.54	16.07		150.0	
10194-CAB	IEEE 802.11n (HT Greenfield, 39 Mbps, 16-QAM)	X	4.67	66.86	16.21	0.00	150.0	± 9.6 %
		Y	4.74	66.84	16.22		150.0	
		Z	4.71	66.85	16.19		150.0	
10195-CAB	IEEE 802.11n (HT Greenfield, 65 Mbps, 64-QAM)	X	4.71	66.89	16.23	0.00	150.0	± 9.6 %
		Y	4.78	66.87	16.24		150.0	
		Z	4.75	66.88	16.21		150.0	
10196-CAB	IEEE 802.11n (HT Mixed, 6.5 Mbps, BPSK)	X	4.51	66.61	16.10	0.00	150.0	± 9.6 %
		Y	4.57	66.59	16.12		150.0	
		Z	4.54	66.60	16.09		150.0	
10197-CAB	IEEE 802.11n (HT Mixed, 39 Mbps, 16-QAM)	X	4.68	66.88	16.22	0.00	150.0	± 9.6 %
		Y	4.75	66.87	16.23		150.0	
		Z	4.72	66.87	16.21		150.0	
10198-CAB	IEEE 802.11n (HT Mixed, 65 Mbps, 64-QAM)	X	4.71	66.91	16.24	0.00	150.0	± 9.6 %
		Y	4.78	66.89	16.25		150.0	
		Z	4.75	66.90	16.22		150.0	
10219-CAB	IEEE 802.11n (HT Mixed, 7.2 Mbps, BPSK)	X	4.45	66.63	16.06	0.00	150.0	± 9.6 %
		Y	4.52	66.60	16.08		150.0	
		Z	4.49	66.61	16.05		150.0	
10220-CAB	IEEE 802.11n (HT Mixed, 43.3 Mbps, 16-QAM)	X	4.68	66.85	16.21	0.00	150.0	± 9.6 %
		Y	4.75	66.84	16.23		150.0	
		Z	4.71	66.84	16.20		150.0	
10221-CAB	IEEE 802.11n (HT Mixed, 72.2 Mbps, 64-QAM)	X	4.72	66.84	16.22	0.00	150.0	± 9.6 %
		Y	4.79	66.82	16.24		150.0	
		Z	4.76	66.83	16.21		150.0	
10222-CAB	IEEE 802.11n (HT Mixed, 15 Mbps, BPSK)	X	5.05	67.00	16.34	0.00	150.0	± 9.6 %
		Y	5.11	67.02	16.35		150.0	
		Z	5.08	67.01	16.32		150.0	



EX3DV4- SN:3759

December 16, 2016

10223-CAB	IEEE 802.11n (HT Mixed, 90 Mbps, 16-QAM)	X	5.36	67.23	16.47	0.00	150.0	± 9.6 %
		Y	5.41	67.21	16.46		150.0	
		Z	5.38	67.21	16.44		150.0	
10224-CAB	IEEE 802.11n (HT Mixed, 150 Mbps, 64-QAM)	X	5.10	67.11	16.32	0.00	150.0	± 9.6 %
		Y	5.15	67.13	16.33		150.0	
		Z	5.13	67.12	16.30		150.0	
10225-CAB	UMTS-FDD (HSPA+)	X	2.77	65.98	15.15	0.00	150.0	± 9.6 %
		Y	2.83	65.95	15.28		150.0	
		Z	2.80	65.95	15.20		150.0	
10226-CAA	LTE-TDD (SC-FDMA, 1 RB, 1.4 MHz, 16-QAM)	X	10.78	90.30	25.53	6.02	65.0	± 9.6 %
		Y	18.21	99.33	28.54		65.0	
		Z	10.03	87.70	24.46		65.0	
10227-CAA	LTE-TDD (SC-FDMA, 1 RB, 1.4 MHz, 64-QAM)	X	10.09	87.96	24.17	6.02	65.0	± 9.6 %
		Y	15.63	95.15	26.65		65.0	
		Z	9.34	85.43	23.15		65.0	
10228-CAA	LTE-TDD (SC-FDMA, 1 RB, 1.4 MHz, QPSK)	X	7.31	87.01	26.28	6.02	65.0	± 9.6 %
		Y	10.95	94.84	29.18		65.0	
		Z	7.62	86.37	25.74		65.0	
10229-CAB	LTE-TDD (SC-FDMA, 1 RB, 3 MHz, 16-QAM)	X	10.17	89.17	25.07	6.02	65.0	± 9.6 %
		Y	16.93	97.90	28.02		65.0	
		Z	9.55	86.74	24.06		65.0	
10230-CAB	LTE-TDD (SC-FDMA, 1 RB, 3 MHz, 64-QAM)	X	9.50	86.91	23.74	6.02	65.0	± 9.6 %
		Y	14.60	93.92	26.19		65.0	
		Z	8.89	84.56	22.78		65.0	
10231-CAB	LTE-TDD (SC-FDMA, 1 RB, 3 MHz, QPSK)	X	7.01	86.13	25.89	6.02	65.0	± 9.6 %
		Y	10.42	93.80	28.76		65.0	
		Z	7.31	85.54	25.36		65.0	
10232-CAC	LTE-TDD (SC-FDMA, 1 RB, 5 MHz, 16-QAM)	X	10.15	89.15	25.07	6.02	65.0	± 9.6 %
		Y	16.90	97.89	28.02		65.0	
		Z	9.53	86.72	24.05		65.0	
10233-CAC	LTE-TDD (SC-FDMA, 1 RB, 5 MHz, 64-QAM)	X	9.48	86.89	23.74	6.02	65.0	± 9.6 %
		Y	14.57	93.90	26.19		65.0	
		Z	8.87	84.54	22.78		65.0	
10234-CAC	LTE-TDD (SC-FDMA, 1 RB, 5 MHz, QPSK)	X	6.75	85.32	25.48	6.02	65.0	± 9.6 %
		Y	9.96	92.79	28.31		65.0	
		Z	7.05	84.75	24.97		65.0	
10235-CAC	LTE-TDD (SC-FDMA, 1 RB, 10 MHz, 16-QAM)	X	10.16	89.18	25.07	6.02	65.0	± 9.6 %
		Y	16.93	97.93	28.03		65.0	
		Z	9.53	86.74	24.06		65.0	
10236-CAC	LTE-TDD (SC-FDMA, 1 RB, 10 MHz, 64-QAM)	X	9.56	87.00	23.77	6.02	65.0	± 9.6 %
		Y	14.74	94.06	26.23		65.0	
		Z	8.94	84.63	22.80		65.0	
10237-CAC	LTE-TDD (SC-FDMA, 1 RB, 10 MHz, QPSK)	X	7.01	86.17	25.90	6.02	65.0	± 9.6 %
		Y	10.44	93.88	28.79		65.0	
		Z	7.31	85.57	25.38		65.0	
10238-CAC	LTE-TDD (SC-FDMA, 1 RB, 15 MHz, 16-QAM)	X	10.13	89.13	25.06	6.02	65.0	± 9.6 %
		Y	16.87	97.87	28.01		65.0	
		Z	9.51	86.70	24.04		65.0	





EX3DV4-- SN:3759

December 16, 2016

10239-CAC	LTE-TDD (SC-FDMA, 1 RB, 15 MHz, 64-QAM)	X	9.45	86.85	23.73	6.02	65.0	± 9.6 %
		Y	14.53	93.88	26.18		65.0	
		Z	8.85	84.51	22.77		65.0	
10240-CAC	LTE-TDD (SC-FDMA, 1 RB, 15 MHz, QPSK)	X	6.99	86.13	25.89	6.02	65.0	± 9.6 %
		Y	10.41	93.83	28.77		65.0	
		Z	7.29	85.53	25.36		65.0	
10241-CAA	LTE-TDD (SC-FDMA, 50% RB, 1.4 MHz, 16-QAM)	X	7.79	79.73	24.31	6.98	65.0	± 9.6 %
		Y	8.42	81.17	25.17		65.0	
		Z	7.92	79.16	23.95		65.0	
10242-CAA	LTE-TDD (SC-FDMA, 50% RB, 1.4 MHz, 64-QAM)	X	6.94	77.37	23.25	6.98	65.0	± 9.6 %
		Y	7.74	79.42	24.37		65.0	
		Z	7.57	78.24	23.48		65.0	
10243-CAA	LTE-TDD (SC-FDMA, 50% RB, 1.4 MHz, QPSK)	X	5.66	74.09	22.69	6.98	65.0	± 9.6 %
		Y	6.19	75.82	23.73		65.0	
		Z	6.21	75.30	23.08		65.0	
10244-CAB	LTE-TDD (SC-FDMA, 50% RB, 3 MHz, 16-QAM)	X	4.96	72.07	16.30	3.98	65.0	± 9.6 %
		Y	5.84	74.71	17.98		65.0	
		Z	5.20	72.29	16.57		65.0	
10245-CAB	LTE-TDD (SC-FDMA, 50% RB, 3 MHz, 64-QAM)	X	4.88	71.59	16.05	3.98	65.0	± 9.6 %
		Y	5.75	74.21	17.72		65.0	
		Z	5.14	71.89	16.35		65.0	
10246-CAB	LTE-TDD (SC-FDMA, 50% RB, 3 MHz, QPSK)	X	4.47	73.89	17.41	3.98	65.0	± 9.6 %
		Y	5.47	77.07	19.20		65.0	
		Z	4.77	74.32	17.73		65.0	
10247-CAC	LTE-TDD (SC-FDMA, 50% RB, 5 MHz, 16-QAM)	X	4.63	71.67	17.14	3.98	65.0	± 9.6 %
		Y	5.15	73.39	18.35		65.0	
		Z	4.89	72.04	17.43		65.0	
10248-CAC	LTE-TDD (SC-FDMA, 50% RB, 5 MHz, 64-QAM)	X	4.65	71.25	16.95	3.98	65.0	± 9.6 %
		Y	5.17	72.96	18.15		65.0	
		Z	4.91	71.65	17.25		65.0	
10249-CAC	LTE-TDD (SC-FDMA, 50% RB, 5 MHz, QPSK)	X	5.53	77.21	19.69	3.98	65.0	± 9.6 %
		Y	6.51	79.92	21.12		65.0	
		Z	5.73	77.18	19.73		65.0	
10250-CAC	LTE-TDD (SC-FDMA, 50% RB, 10 MHz, 16-QAM)	X	5.62	74.50	20.04	3.98	65.0	± 9.6 %
		Y	6.03	75.68	20.80		65.0	
		Z	5.84	74.62	20.08		65.0	
10251-CAC	LTE-TDD (SC-FDMA, 50% RB, 10 MHz, 64-QAM)	X	5.39	72.60	18.87	3.98	65.0	± 9.6 %
		Y	5.81	73.80	19.68		65.0	
		Z	5.61	72.77	18.95		65.0	
10252-CAC	LTE-TDD (SC-FDMA, 50% RB, 10 MHz, QPSK)	X	6.09	77.92	20.96	3.98	65.0	± 9.6 %
		Y	6.81	79.77	21.91		65.0	
		Z	6.26	77.73	20.83		65.0	
10253-CAC	LTE-TDD (SC-FDMA, 50% RB, 15 MHz, 16-QAM)	X	5.55	72.06	19.02	3.98	65.0	± 9.6 %
		Y	5.89	73.04	19.68		65.0	
		Z	5.75	72.20	19.06		65.0	
10254-CAC	LTE-TDD (SC-FDMA, 50% RB, 15 MHz, 64-QAM)	X	5.90	73.00	19.76	3.98	65.0	± 9.6 %
		Y	6.23	73.89	20.36		65.0	
		Z	6.10	73.13	19.78		65.0	



EX3DV4-- SN:3759

December 16, 2016

10255-CAC	LTE-TDD (SC-FDMA, 50% RB, 15 MHz, QPSK)	X	5.95	75.57	20.30	3.98	65.0	± 9.6 %
		Y	6.42	76.79	20.97		65.0	
		Z	6.12	75.49	20.20		65.0	
10256-CAA	LTE-TDD (SC-FDMA, 100% RB, 1.4 MHz, 16-QAM)	X	3.81	68.27	13.54	3.98	65.0	± 9.6 %
		Y	4.62	71.09	15.45		65.0	
		Z	4.13	68.93	14.09		65.0	
10257-CAA	LTE-TDD (SC-FDMA, 100% RB, 1.4 MHz, 64-QAM)	X	3.75	67.76	13.21	3.98	65.0	± 9.6 %
		Y	4.53	70.48	15.09		65.0	
		Z	4.08	68.47	13.80		65.0	
10258-CAA	LTE-TDD (SC-FDMA, 100% RB, 1.4 MHz, QPSK)	X	3.43	69.78	14.77	3.98	65.0	± 9.6 %
		Y	4.26	73.06	16.79		65.0	
		Z	3.77	70.67	15.39		65.0	
10259-CAB	LTE-TDD (SC-FDMA, 100% RB, 3 MHz, 16-QAM)	X	5.02	72.74	18.20	3.98	65.0	± 9.6 %
		Y	5.50	74.25	19.24		65.0	
		Z	5.25	72.99	18.38		65.0	
10260-CAB	LTE-TDD (SC-FDMA, 100% RB, 3 MHz, 64-QAM)	X	5.06	72.55	18.12	3.98	65.0	± 9.6 %
		Y	5.54	74.03	19.16		65.0	
		Z	5.30	72.82	18.32		65.0	
10261-CAB	LTE-TDD (SC-FDMA, 100% RB, 3 MHz, QPSK)	X	5.53	76.85	19.97	3.98	65.0	± 9.6 %
		Y	6.33	79.10	21.18		65.0	
		Z	5.72	76.78	19.95		65.0	
10262-CAC	LTE-TDD (SC-FDMA, 100% RB, 5 MHz, 16-QAM)	X	5.61	74.44	19.99	3.98	65.0	± 9.6 %
		Y	6.02	75.63	20.76		65.0	
		Z	5.82	74.57	20.04		65.0	
10263-CAC	LTE-TDD (SC-FDMA, 100% RB, 5 MHz, 64-QAM)	X	5.38	72.58	18.86	3.98	65.0	± 9.6 %
		Y	5.80	73.78	19.67		65.0	
		Z	5.60	72.75	18.94		65.0	
10264-CAC	LTE-TDD (SC-FDMA, 100% RB, 5 MHz, QPSK)	X	6.03	77.74	20.87	3.98	65.0	± 9.6 %
		Y	6.76	79.60	21.82		65.0	
		Z	6.20	77.56	20.75		65.0	
10265-CAC	LTE-TDD (SC-FDMA, 100% RB, 10 MHz, 16-QAM)	X	5.64	72.49	19.24	3.98	65.0	± 9.6 %
		Y	6.02	73.58	19.91		65.0	
		Z	5.85	72.65	19.26		65.0	
10266-CAC	LTE-TDD (SC-FDMA, 100% RB, 10 MHz, 64-QAM)	X	6.02	73.52	20.05	3.98	65.0	± 9.6 %
		Y	6.38	74.46	20.65		65.0	
		Z	6.24	73.65	20.06		65.0	
10267-CAC	LTE-TDD (SC-FDMA, 100% RB, 10 MHz, QPSK)	X	6.18	76.05	20.30	3.98	65.0	± 9.6 %
		Y	6.71	77.35	20.96		65.0	
		Z	6.35	75.94	20.17		65.0	
10268-CAC	LTE-TDD (SC-FDMA, 100% RB, 15 MHz, 16-QAM)	X	6.32	72.70	19.77	3.98	65.0	± 9.6 %
		Y	6.64	73.53	20.28		65.0	
		Z	6.53	72.85	19.78		65.0	
10269-CAC	LTE-TDD (SC-FDMA, 100% RB, 15 MHz, 64-QAM)	X	6.32	72.36	19.68	3.98	65.0	± 9.6 %
		Y	6.62	73.14	20.18		65.0	
		Z	6.52	72.52	19.69		65.0	
10270-CAC	LTE-TDD (SC-FDMA, 100% RB, 15 MHz, QPSK)	X	6.25	74.18	19.71	3.98	65.0	± 9.6 %
		Y	6.62	75.06	20.19		65.0	
		Z	6.43	74.17	19.63		65.0	





EX3DV4- SN:3759

December 16, 2016

10274-CAB	UMTS-FDD (HSUPA, Subtest 5, 3GPP Rel8.10)	X	2.56	66.31	15.06	0.00	150.0	± 9.6 %
		Y	2.60	66.23	15.15		150.0	
		Z	2.58	66.22	15.07		150.0	
10275-CAB	UMTS-FDD (HSUPA, Subtest 5, 3GPP Rel8.4)	X	1.56	67.20	15.15	0.00	150.0	± 9.6 %
		Y	1.60	67.39	15.30		150.0	
		Z	1.57	67.13	15.13		150.0	
10277-CAA	PHS (QPSK)	X	2.51	62.11	7.79	9.03	50.0	± 9.6 %
		Y	2.65	62.75	8.40		50.0	
		Z	2.82	62.87	8.60		50.0	
10278-CAA	PHS (QPSK, BW 884MHz, Rolloff 0.5)	X	4.25	69.59	14.12	9.03	50.0	± 9.6 %
		Y	5.28	73.26	16.24		50.0	
		Z	4.70	70.64	14.97		50.0	
10279-CAA	PHS (QPSK, BW 884MHz, Rolloff 0.38)	X	4.36	69.82	14.27	9.03	50.0	± 9.6 %
		Y	5.43	73.55	16.40		50.0	
		Z	4.80	70.86	15.10		50.0	
10290-AAB	CDMA2000, RC1, SO55, Full Rate	X	1.34	67.70	13.35	0.00	150.0	± 9.6 %
		Y	1.45	68.27	13.99		150.0	
		Z	1.39	67.96	13.69		150.0	
10291-AAB	CDMA2000, RC3, SO55, Full Rate	X	0.79	65.05	11.96	0.00	150.0	± 9.6 %
		Y	0.83	65.36	12.46		150.0	
		Z	0.81	65.16	12.22		150.0	
10292-AAB	CDMA2000, RC3, SO32, Full Rate	X	0.99	68.85	14.23	0.00	150.0	± 9.6 %
		Y	1.02	68.99	14.65		150.0	
		Z	1.00	68.77	14.41		150.0	
10293-AAB	CDMA2000, RC3, SO3, Full Rate	X	1.54	75.17	17.42	0.00	150.0	± 9.6 %
		Y	1.47	74.27	17.42		150.0	
		Z	1.49	74.55	17.40		150.0	
10295-AAB	CDMA2000, RC1, SO3, 1/8th Rate 25 fr.	X	7.71	79.88	21.20	9.03	50.0	± 9.6 %
		Y	8.10	81.66	22.53		50.0	
		Z	7.32	78.59	20.91		50.0	
10297-AAB	LTE-FDD (SC-FDMA, 50% RB, 20 MHz, QPSK)	X	2.67	69.12	16.34	0.00	150.0	± 9.6 %
		Y	2.75	69.34	16.40		150.0	
		Z	2.70	69.14	16.31		150.0	
10298-AAC	LTE-FDD (SC-FDMA, 50% RB, 3 MHz, QPSK)	X	1.48	66.88	13.56	0.00	150.0	± 9.6 %
		Y	1.59	67.41	14.16		150.0	
		Z	1.54	67.14	13.88		150.0	
10299-AAC	LTE-FDD (SC-FDMA, 50% RB, 3 MHz, 16-QAM)	X	2.42	68.39	13.40	0.00	150.0	± 9.6 %
		Y	2.73	69.76	14.46		150.0	
		Z	2.44	68.28	13.57		150.0	
10300-AAC	LTE-FDD (SC-FDMA, 50% RB, 3 MHz, 64-QAM)	X	1.84	64.34	10.71	0.00	150.0	± 9.6 %
		Y	2.07	65.41	11.70		150.0	
		Z	1.91	64.53	11.04		150.0	
10301-AAA	IEEE 802.16e WiMAX (29:18, 5ms, 10MHz, QPSK, PUSC)	X	4.69	65.32	17.32	4.17	50.0	± 9.6 %
		Y	4.87	65.71	17.64		50.0	
		Z	4.69	65.00	17.16		50.0	
10302-AAA	IEEE 802.16e WiMAX (29:18, 5ms, 10MHz, QPSK, PUSC, 3 CTRL symbols)	X	5.14	65.80	17.95	4.96	50.0	± 9.6 %
		Y	5.30	66.07	18.21		50.0	
		Z	5.24	65.91	18.01		50.0	



EX3DV4- SN:3759

December 16, 2016

10303-AAA	IEEE 802.16e WiMAX (31:15, 5ms, 10MHz, 64QAM, PUSC)	X	4.90	65.45	17.79	4.96	50.0	± 9.6 %
		Y	5.05	65.75	18.08		50.0	
		Z	5.00	65.59	17.87		50.0	
10304-AAA	IEEE 802.16e WiMAX (29:18, 5ms, 10MHz, 64QAM, PUSC)	X	4.70	65.32	17.29	4.17	50.0	± 9.6 %
		Y	4.84	65.53	17.51		50.0	
		Z	4.79	65.41	17.35		50.0	
10305-AAA	IEEE 802.16e WiMAX (31:15, 10ms, 10MHz, 64QAM, PUSC, 15 symbols)	X	4.47	67.68	19.47	6.02	35.0	± 9.6 %
		Y	4.61	68.07	20.00		35.0	
		Z	4.68	68.32	19.86		35.0	
10306-AAA	IEEE 802.16e WiMAX (29:18, 10ms, 10MHz, 64QAM, PUSC, 18 symbols)	X	4.73	66.49	18.99	6.02	35.0	± 9.6 %
		Y	4.86	66.77	19.40		35.0	
		Z	4.88	66.88	19.24		35.0	
10307-AAA	IEEE 802.16e WiMAX (29:18, 10ms, 10MHz, QPSK, PUSC, 18 symbols)	X	4.64	66.69	18.98	6.02	35.0	± 9.6 %
		Y	4.78	67.05	19.42		35.0	
		Z	4.81	67.17	19.27		35.0	
10308-AAA	IEEE 802.16e WiMAX (29:18, 10ms, 10MHz, 16QAM, PUSC)	X	4.62	66.91	19.13	6.02	35.0	± 9.6 %
		Y	4.76	67.26	19.56		35.0	
		Z	4.80	67.40	19.42		35.0	
10309-AAA	IEEE 802.16e WiMAX (29:18, 10ms, 10MHz, 16QAM, AMC 2x3, 18 symbols)	X	4.77	66.66	19.12	6.02	35.0	± 9.6 %
		Y	4.93	67.03	19.56		35.0	
		Z	4.94	67.08	19.38		35.0	
10310-AAA	IEEE 802.16e WiMAX (29:18, 10ms, 10MHz, QPSK, AMC 2x3, 18 symbols)	X	4.68	66.58	18.98	6.02	35.0	± 9.6 %
		Y	4.82	66.87	19.39		35.0	
		Z	4.85	67.00	19.24		35.0	
10311-AAB	LTE-FDD (SC-FDMA, 100% RB, 15 MHz, QPSK)	X	3.03	68.47	16.02	0.00	150.0	± 9.6 %
		Y	3.11	68.68	16.08		150.0	
		Z	3.06	68.51	16.00		150.0	
10313-AAA	iDEN 1:3	X	3.20	70.67	15.02	6.99	70.0	± 9.6 %
		Y	3.67	72.42	15.81		70.0	
		Z	3.35	70.57	14.98		70.0	
10314-AAA	iDEN 1:6	X	4.25	75.97	19.87	10.00	30.0	± 9.6 %
		Y	4.80	78.08	20.77		30.0	
		Z	4.31	75.23	19.53		30.0	
10315-AAB	IEEE 802.11b WiFi 2.4 GHz (DSSS, 1 Mbps, 96pc duty cycle)	X	1.08	63.30	14.76	0.17	150.0	± 9.6 %
		Y	1.09	63.43	14.89		150.0	
		Z	1.09	63.30	14.74		150.0	
10316-AAB	IEEE 802.11g WiFi 2.4 GHz (ERP-OFDM, 6 Mbps, 96pc duty cycle)	X	4.54	66.52	16.14	0.17	150.0	± 9.6 %
		Y	4.61	66.53	16.19		150.0	
		Z	4.58	66.51	16.12		150.0	
10317-AAB	IEEE 802.11a WiFi 5 GHz (OFDM, 6 Mbps, 96pc duty cycle)	X	4.54	66.52	16.14	0.17	150.0	± 9.6 %
		Y	4.61	66.53	16.19		150.0	
		Z	4.58	66.51	16.12		150.0	
10400-AAC	IEEE 802.11ac WiFi (20MHz, 64-QAM, 99pc duty cycle)	X	4.65	66.89	16.19	0.00	150.0	± 9.6 %
		Y	4.73	66.90	16.22		150.0	
		Z	4.69	66.88	16.17		150.0	
10401-AAC	IEEE 802.11ac WiFi (40MHz, 64-QAM, 99pc duty cycle)	X	5.37	67.10	16.37	0.00	150.0	± 9.6 %
		Y	5.42	67.08	16.37		150.0	
		Z	5.40	67.08	16.34		150.0	



EX3DV4- SN:3759

December 16, 2016

10402-AAC	IEEE 802.11ac WiFi (80MHz, 64-QAM, 99pc duty cycle)	X	5.62	67.39	16.39	0.00	150.0	± 9.6 %
		Y	5.68	67.44	16.41		150.0	
		Z	5.65	67.42	16.38		150.0	
10403-AAB	CDMA2000 (1xEV-DO, Rev. 0)	X	1.34	67.70	13.35	0.00	115.0	± 9.6 %
		Y	1.45	68.27	13.99		115.0	
		Z	1.39	67.96	13.69		115.0	
10404-AAB	CDMA2000 (1xEV-DO, Rev. A)	X	1.34	67.70	13.35	0.00	115.0	± 9.6 %
		Y	1.45	68.27	13.99		115.0	
		Z	1.39	67.96	13.69		115.0	
10406-AAB	CDMA2000, RC3, SO32, SCH0, Full Rate	X	100.00	119.44	29.25	0.00	100.0	± 9.6 %
		Y	100.00	119.94	29.56		100.0	
		Z	22.65	100.63	25.07		100.0	
10410-AAB	LTE-TDD (SC-FDMA, 1 RB, 10 MHz, QPSK, UL Subframe=2,3,4,7,8,9)	X	9.31	88.57	21.07	3.23	80.0	± 9.6 %
		Y	31.52	104.08	25.47		80.0	
		Z	6.87	83.66	19.48		80.0	
10415-AAA	IEEE 802.11b WiFi 2.4 GHz (DSSS, 1 Mbps, 99pc duty cycle)	X	1.02	62.66	14.35	0.00	150.0	± 9.6 %
		Y	1.01	62.70	14.40		150.0	
		Z	1.01	62.61	14.31		150.0	
10416-AAA	IEEE 802.11g WiFi 2.4 GHz (ERP-OFDM, 6 Mbps, 99pc duty cycle)	X	4.51	66.59	16.15	0.00	150.0	± 9.6 %
		Y	4.56	66.56	16.16		150.0	
		Z	4.54	66.57	16.14		150.0	
10417-AAA	IEEE 802.11a/h WiFi 5 GHz (OFDM, 6 Mbps, 99pc duty cycle)	X	4.51	66.59	16.15	0.00	150.0	± 9.6 %
		Y	4.56	66.56	16.16		150.0	
		Z	4.54	66.57	16.14		150.0	
10418-AAA	IEEE 802.11g WiFi 2.4 GHz (DSSS-OFDM, 6 Mbps, 99pc duty cycle, Long preamble)	X	4.50	66.76	16.18	0.00	150.0	± 9.6 %
		Y	4.55	66.71	16.17		150.0	
		Z	4.53	66.73	16.15		150.0	
10419-AAA	IEEE 802.11g WiFi 2.4 GHz (DSSS-OFDM, 6 Mbps, 99pc duty cycle, Short preamble)	X	4.52	66.71	16.18	0.00	150.0	± 9.6 %
		Y	4.57	66.66	16.18		150.0	
		Z	4.55	66.68	16.16		150.0	
10422-AAA	IEEE 802.11n (HT Greenfield, 7.2 Mbps, BPSK)	X	4.63	66.70	16.19	0.00	150.0	± 9.6 %
		Y	4.69	66.67	16.20		150.0	
		Z	4.67	66.68	16.17		150.0	
10423-AAA	IEEE 802.11n (HT Greenfield, 43.3 Mbps, 16-QAM)	X	4.79	67.00	16.30	0.00	150.0	± 9.6 %
		Y	4.87	66.99	16.32		150.0	
		Z	4.83	66.99	16.29		150.0	
10424-AAA	IEEE 802.11n (HT Greenfield, 72.2 Mbps, 64-QAM)	X	4.71	66.95	16.27	0.00	150.0	± 9.6 %
		Y	4.78	66.94	16.29		150.0	
		Z	4.75	66.94	16.26		150.0	
10425-AAA	IEEE 802.11n (HT Greenfield, 15 Mbps, BPSK)	X	5.32	67.24	16.45	0.00	150.0	± 9.6 %
		Y	5.38	67.26	16.47		150.0	
		Z	5.35	67.25	16.44		150.0	
10426-AAA	IEEE 802.11n (HT Greenfield, 90 Mbps, 16-QAM)	X	5.33	67.30	16.48	0.00	150.0	± 9.6 %
		Y	5.38	67.27	16.47		150.0	
		Z	5.35	67.28	16.45		150.0	





EX3DV4- SN:3759

December 16, 2016

10427-AAA	IEEE 802.11n (HT Greenfield, 150 Mbps, 64-QAM)	X	5.34	67.25	16.45	0.00	150.0	± 9.6 %
		Y	5.40	67.26	16.46		150.0	
		Z	5.37	67.26	16.43		150.0	
10430-AAA	LTE-FDD (OFDMA, 5 MHz, E-TM 3.1)	X	4.31	71.33	18.36	0.00	150.0	± 9.6 %
		Y	4.26	70.45	18.05		150.0	
		Z	4.35	71.18	18.37		150.0	
10431-AAA	LTE-FDD (OFDMA, 10 MHz, E-TM 3.1)	X	4.17	67.12	16.11	0.00	150.0	± 9.6 %
		Y	4.25	67.08	16.16		150.0	
		Z	4.21	67.09	16.11		150.0	
10432-AAA	LTE-FDD (OFDMA, 15 MHz, E-TM 3.1)	X	4.48	67.00	16.21	0.00	150.0	± 9.6 %
		Y	4.55	66.97	16.23		150.0	
		Z	4.51	66.98	16.20		150.0	
10433-AAA	LTE-FDD (OFDMA, 20 MHz, E-TM 3.1)	X	4.73	66.99	16.29	0.00	150.0	± 9.6 %
		Y	4.80	66.98	16.31		150.0	
		Z	4.76	66.98	16.28		150.0	
10434-AAA	W-CDMA (BS Test Model 1, 64 DPCH)	X	4.44	72.28	18.34	0.00	150.0	± 9.6 %
		Y	4.35	71.26	18.02		150.0	
		Z	4.47	72.13	18.38		150.0	
10435-AAB	LTE-TDD (SC-FDMA, 1 RB, 20 MHz, QPSK, UL Subframe=2,3,4,7,8,9)	X	8.80	87.73	20.77	3.23	80.0	± 9.6 %
		Y	28.63	102.67	25.07		80.0	
		Z	6.61	83.07	19.24		80.0	
10447-AAA	LTE-FDD (OFDMA, 5 MHz, E-TM 3.1, Clipping 44%)	X	3.44	67.05	15.33	0.00	150.0	± 9.6 %
		Y	3.54	67.05	15.51		150.0	
		Z	3.49	67.04	15.41		150.0	
10448-AAA	LTE-FDD (OFDMA, 10 MHz, E-TM 3.1, Clipping 44%)	X	4.01	66.90	15.97	0.00	150.0	± 9.6 %
		Y	4.09	66.85	16.02		150.0	
		Z	4.05	66.87	15.97		150.0	
10449-AAA	LTE-FDD (OFDMA, 15 MHz, E-TM 3.1, Clipping 44%)	X	4.29	66.83	16.11	0.00	150.0	± 9.6 %
		Y	4.36	66.80	16.13		150.0	
		Z	4.33	66.81	16.10		150.0	
10450-AAA	LTE-FDD (OFDMA, 20 MHz, E-TM 3.1, Clipping 44%)	X	4.50	66.75	16.15	0.00	150.0	± 9.6 %
		Y	4.55	66.74	16.16		150.0	
		Z	4.53	66.74	16.13		150.0	
10451-AAA	W-CDMA (BS Test Model 1, 64 DPCH, Clipping 44%)	X	3.31	67.15	14.88	0.00	150.0	± 9.6 %
		Y	3.44	67.23	15.15		150.0	
		Z	3.38	67.19	15.02		150.0	
10456-AAA	IEEE 802.11ac WiFi (160MHz, 64-QAM, 99pc duty cycle)	X	6.20	67.82	16.62	0.00	150.0	± 9.6 %
		Y	6.24	67.83	16.62		150.0	
		Z	6.21	67.82	16.60		150.0	
10457-AAA	UMTS-FDD (DC-HSDPA)	X	3.79	65.25	15.85	0.00	150.0	± 9.6 %
		Y	3.81	65.20	15.87		150.0	
		Z	3.80	65.22	15.84		150.0	
10458-AAA	CDMA2000 (1xEV-DO, Rev. B, 2 carriers)	X	3.12	66.40	14.19	0.00	150.0	± 9.6 %
		Y	3.27	66.59	14.61		150.0	
		Z	3.20	66.49	14.40		150.0	
10459-AAA	CDMA2000 (1xEV-DO, Rev. B, 3 carriers)	X	4.15	64.59	15.15	0.00	150.0	± 9.6 %
		Y	4.37	64.97	15.56		150.0	
		Z	4.34	65.08	15.49		150.0	



EX3DV4- SN:3759

December 16, 2016

10460-AAA	UMTS-FDD (WCDMA, AMR)	X	0.86	66.78	15.35	0.00	150.0	± 9.6 %
		Y	0.87	67.12	15.55		150.0	
		Z	0.85	66.64	15.28		150.0	
10461-AAA	LTE-TDD (SC-FDMA, 1 RB, 1.4 MHz, QPSK, UL Subframe=2,3,4,7,8,9)	X	3.92	79.50	19.11	3.29	80.0	± 9.6 %
		Y	11.43	93.56	23.62		80.0	
		Z	3.33	76.15	17.77		80.0	
10462-AAA	LTE-TDD (SC-FDMA, 1 RB, 1.4 MHz, 16-QAM, UL Subframe=2,3,4,7,8,9)	X	1.13	61.41	8.85	3.23	80.0	± 9.6 %
		Y	1.51	63.93	10.23		80.0	
		Z	1.26	61.69	9.13		80.0	
10463-AAA	LTE-TDD (SC-FDMA, 1 RB, 1.4 MHz, 64-QAM, UL Subframe=2,3,4,7,8,9)	X	0.98	60.00	7.66	3.23	80.0	± 9.6 %
		Y	1.14	61.02	8.38		80.0	
		Z	1.07	60.00	7.84		80.0	
10464-AAA	LTE-TDD (SC-FDMA, 1 RB, 3 MHz, QPSK, UL Subframe=2,3,4,7,8,9)	X	3.04	75.75	17.25	3.23	80.0	± 9.6 %
		Y	8.41	88.42	21.50		80.0	
		Z	2.68	73.06	16.13		80.0	
10465-AAA	LTE-TDD (SC-FDMA, 1 RB, 3 MHz, 16-QAM, UL Subframe=2,3,4,7,8,9)	X	1.07	60.96	8.56	3.23	80.0	± 9.6 %
		Y	1.39	63.13	9.80		80.0	
		Z	1.20	61.26	8.86		80.0	
10466-AAA	LTE-TDD (SC-FDMA, 1 RB, 3 MHz, 64-QAM, UL Subframe=2,3,4,7,8,9)	X	0.99	60.00	7.61	3.23	80.0	± 9.6 %
		Y	1.10	60.63	8.14		80.0	
		Z	1.07	60.00	7.79		80.0	
10467-AAB	LTE-TDD (SC-FDMA, 1 RB, 5 MHz, QPSK, UL Subframe=2,3,4,7,8,9)	X	3.20	76.51	17.55	3.23	80.0	± 9.6 %
		Y	9.35	89.88	21.96		80.0	
		Z	2.78	73.61	16.36		80.0	
10468-AAB	LTE-TDD (SC-FDMA, 1 RB, 5 MHz, 16-QAM, UL Subframe=2,3,4,7,8,9)	X	1.08	61.07	8.64	3.23	80.0	± 9.6 %
		Y	1.41	63.32	9.90		80.0	
		Z	1.21	61.36	8.93		80.0	
10469-AAB	LTE-TDD (SC-FDMA, 1 RB, 5 MHz, 64-QAM, UL Subframe=2,3,4,7,8,9)	X	0.98	60.00	7.61	3.23	80.0	± 9.6 %
		Y	1.10	60.64	8.14		80.0	
		Z	1.07	60.00	7.79		80.0	
10470-AAB	LTE-TDD (SC-FDMA, 1 RB, 10 MHz, QPSK, UL Subframe=2,3,4,7,8,9)	X	3.20	76.50	17.54	3.23	80.0	± 9.6 %
		Y	9.36	89.91	21.97		80.0	
		Z	2.77	73.60	16.35		80.0	
10471-AAB	LTE-TDD (SC-FDMA, 1 RB, 10 MHz, 16-QAM, UL Subframe=2,3,4,7,8,9)	X	1.08	61.04	8.61	3.23	80.0	± 9.6 %
		Y	1.41	63.27	9.86		80.0	
		Z	1.21	61.33	8.90		80.0	
10472-AAB	LTE-TDD (SC-FDMA, 1 RB, 10 MHz, 64-QAM, UL Subframe=2,3,4,7,8,9)	X	0.98	60.00	7.60	3.23	80.0	± 9.6 %
		Y	1.09	60.60	8.11		80.0	
		Z	1.07	60.00	7.78		80.0	
10473-AAB	LTE-TDD (SC-FDMA, 1 RB, 15 MHz, QPSK, UL Subframe=2,3,4,7,8,9)	X	3.19	76.46	17.52	3.23	80.0	± 9.6 %
		Y	9.33	89.85	21.94		80.0	
		Z	2.77	73.57	16.34		80.0	
10474-AAB	LTE-TDD (SC-FDMA, 1 RB, 15 MHz, 16-QAM, UL Subframe=2,3,4,7,8,9)	X	1.08	61.02	8.60	3.23	80.0	± 9.6 %
		Y	1.40	63.25	9.85		80.0	
		Z	1.20	61.32	8.89		80.0	
10475-AAB	LTE-TDD (SC-FDMA, 1 RB, 15 MHz, 64-QAM, UL Subframe=2,3,4,7,8,9)	X	0.98	60.00	7.60	3.23	80.0	± 9.6 %
		Y	1.09	60.59	8.10		80.0	
		Z	1.07	60.00	7.78		80.0	





EX3DV4- SN:3759

December 16, 2016

10477-AAB	LTE-TDD (SC-FDMA, 1 RB, 20 MHz, 16-QAM, UL Subframe=2,3,4,7,8,9)	X	1.06	60.92	8.53	3.23	80.0	± 9.6 %
		Y	1.38	63.07	9.75		80.0	
		Z	1.19	61.22	8.82		80.0	
10478-AAB	LTE-TDD (SC-FDMA, 1 RB, 20 MHz, 64-QAM, UL Subframe=2,3,4,7,8,9)	X	0.98	60.00	7.59	3.23	80.0	± 9.6 %
		Y	1.09	60.56	8.08		80.0	
		Z	1.07	60.00	7.77		80.0	
10479-AAA	LTE-TDD (SC-FDMA, 50% RB, 1.4 MHz, QPSK, UL Subframe=2,3,4,7,8,9)	X	4.14	76.27	18.98	3.23	80.0	± 9.6 %
		Y	4.79	78.30	20.13		80.0	
		Z	3.76	74.09	18.13		80.0	
10480-AAA	LTE-TDD (SC-FDMA, 50% RB, 1.4 MHz, 16-QAM, UL Subframe=2,3,4,7,8,9)	X	3.67	71.15	15.30	3.23	80.0	± 9.6 %
		Y	4.79	74.51	17.04		80.0	
		Z	3.56	70.15	15.03		80.0	
10481-AAA	LTE-TDD (SC-FDMA, 50% RB, 1.4 MHz, 64-QAM, UL Subframe=2,3,4,7,8,9)	X	3.10	68.67	13.94	3.23	80.0	± 9.6 %
		Y	4.07	71.92	15.71		80.0	
		Z	3.13	68.19	13.89		80.0	
10482-AAA	LTE-TDD (SC-FDMA, 50% RB, 3 MHz, QPSK, UL Subframe=2,3,4,7,8,9)	X	2.13	66.78	14.04	2.23	80.0	± 9.6 %
		Y	2.63	69.43	15.68		80.0	
		Z	2.28	67.25	14.40		80.0	
10483-AAA	LTE-TDD (SC-FDMA, 50% RB, 3 MHz, 16-QAM, UL Subframe=2,3,4,7,8,9)	X	2.80	67.01	13.58	2.23	80.0	± 9.6 %
		Y	3.57	70.12	15.47		80.0	
		Z	2.93	67.15	13.81		80.0	
10484-AAA	LTE-TDD (SC-FDMA, 50% RB, 3 MHz, 64-QAM, UL Subframe=2,3,4,7,8,9)	X	2.73	66.47	13.34	2.23	80.0	± 9.6 %
		Y	3.45	69.45	15.20		80.0	
		Z	2.87	66.70	13.61		80.0	
10485-AAB	LTE-TDD (SC-FDMA, 50% RB, 5 MHz, QPSK, UL Subframe=2,3,4,7,8,9)	X	2.55	68.83	15.94	2.23	80.0	± 9.6 %
		Y	2.98	70.92	17.16		80.0	
		Z	2.67	68.99	16.05		80.0	
10486-AAB	LTE-TDD (SC-FDMA, 50% RB, 5 MHz, 16-QAM, UL Subframe=2,3,4,7,8,9)	X	2.67	66.45	14.37	2.23	80.0	± 9.6 %
		Y	3.02	67.96	15.47		80.0	
		Z	2.81	66.75	14.64		80.0	
10487-AAB	LTE-TDD (SC-FDMA, 50% RB, 5 MHz, 64-QAM, UL Subframe=2,3,4,7,8,9)	X	2.70	66.22	14.25	2.23	80.0	± 9.6 %
		Y	3.04	67.69	15.34		80.0	
		Z	2.84	66.54	14.53		80.0	
10488-AAB	LTE-TDD (SC-FDMA, 50% RB, 10 MHz, QPSK, UL Subframe=2,3,4,7,8,9)	X	3.02	69.31	16.93	2.23	80.0	± 9.6 %
		Y	3.39	70.86	17.76		80.0	
		Z	3.14	69.41	16.93		80.0	
10489-AAB	LTE-TDD (SC-FDMA, 50% RB, 10 MHz, 16-QAM, UL Subframe=2,3,4,7,8,9)	X	3.17	67.21	16.05	2.23	80.0	± 9.6 %
		Y	3.40	68.06	16.65		80.0	
		Z	3.28	67.32	16.10		80.0	
10490-AAB	LTE-TDD (SC-FDMA, 50% RB, 10 MHz, 64-QAM, UL Subframe=2,3,4,7,8,9)	X	3.27	67.16	16.05	2.23	80.0	± 9.6 %
		Y	3.50	67.96	16.63		80.0	
		Z	3.38	67.27	16.11		80.0	
10491-AAB	LTE-TDD (SC-FDMA, 50% RB, 15 MHz, QPSK, UL Subframe=2,3,4,7,8,9)	X	3.39	68.71	16.86	2.23	80.0	± 9.6 %
		Y	3.69	69.88	17.49		80.0	
		Z	3.50	68.83	16.85		80.0	
10492-AAB	LTE-TDD (SC-FDMA, 50% RB, 15 MHz, 16-QAM, UL Subframe=2,3,4,7,8,9)	X	3.59	66.97	16.31	2.23	80.0	± 9.6 %
		Y	3.79	67.64	16.77		80.0	
		Z	3.69	67.09	16.34		80.0	





EX3DV4- SN:3759

December 16, 2016

10493-AAB	LTE-TDD (SC-FDMA, 50% RB, 15 MHz, 64-QAM, UL Subframe=2,3,4,7,8,9)	X	3.66	66.91	16.30	2.23	80.0	± 9.6 %
		Y	3.86	67.55	16.75		80.0	
		Z	3.77	67.03	16.34		80.0	
10494-AAB	LTE-TDD (SC-FDMA, 50% RB, 20 MHz, QPSK, UL Subframe=2,3,4,7,8,9)	X	3.57	69.75	17.16	2.23	80.0	± 9.6 %
		Y	3.95	71.16	17.86		80.0	
		Z	3.69	69.87	17.14		80.0	
10495-AAB	LTE-TDD (SC-FDMA, 50% RB, 20 MHz, 16-QAM, UL Subframe=2,3,4,7,8,9)	X	3.60	67.26	16.48	2.23	80.0	± 9.6 %
		Y	3.81	68.00	16.94		80.0	
		Z	3.71	67.39	16.50		80.0	
10496-AAB	LTE-TDD (SC-FDMA, 50% RB, 20 MHz, 64-QAM, UL Subframe=2,3,4,7,8,9)	X	3.70	67.12	16.46	2.23	80.0	± 9.6 %
		Y	3.90	67.79	16.90		80.0	
		Z	3.81	67.25	16.48		80.0	
10497-AAA	LTE-TDD (SC-FDMA, 100% RB, 1.4 MHz, QPSK, UL Subframe=2,3,4,7,8,9)	X	1.56	63.22	11.36	2.23	80.0	± 9.6 %
		Y	1.97	65.90	13.24		80.0	
		Z	1.73	64.01	11.99		80.0	
10498-AAA	LTE-TDD (SC-FDMA, 100% RB, 1.4 MHz, 16-QAM, UL Subframe=2,3,4,7,8,9)	X	1.39	60.03	8.67	2.23	80.0	± 9.6 %
		Y	1.73	61.98	10.36		80.0	
		Z	1.57	60.86	9.43		80.0	
10499-AAA	LTE-TDD (SC-FDMA, 100% RB, 1.4 MHz, 64-QAM, UL Subframe=2,3,4,7,8,9)	X	1.41	60.00	8.53	2.23	80.0	± 9.6 %
		Y	1.69	61.56	10.00		80.0	
		Z	1.54	60.51	9.11		80.0	
10500-AAA	LTE-TDD (SC-FDMA, 100% RB, 3 MHz, QPSK, UL Subframe=2,3,4,7,8,9)	X	2.73	68.91	16.30	2.23	80.0	± 9.6 %
		Y	3.11	70.67	17.33		80.0	
		Z	2.84	69.01	16.36		80.0	
10501-AAA	LTE-TDD (SC-FDMA, 100% RB, 3 MHz, 16-QAM, UL Subframe=2,3,4,7,8,9)	X	2.90	66.88	15.08	2.23	80.0	± 9.6 %
		Y	3.20	68.06	15.95		80.0	
		Z	3.02	67.06	15.24		80.0	
10502-AAA	LTE-TDD (SC-FDMA, 100% RB, 3 MHz, 64-QAM, UL Subframe=2,3,4,7,8,9)	X	2.96	66.81	14.99	2.23	80.0	± 9.6 %
		Y	3.26	67.97	15.86		80.0	
		Z	3.09	67.00	15.16		80.0	
10503-AAB	LTE-TDD (SC-FDMA, 100% RB, 5 MHz, QPSK, UL Subframe=2,3,4,7,8,9)	X	2.99	69.14	16.84	2.23	80.0	± 9.6 %
		Y	3.36	70.70	17.68		80.0	
		Z	3.11	69.25	16.84		80.0	
10504-AAB	LTE-TDD (SC-FDMA, 100% RB, 5 MHz, 16-QAM, UL Subframe=2,3,4,7,8,9)	X	3.16	67.12	15.99	2.23	80.0	± 9.6 %
		Y	3.39	67.99	16.60		80.0	
		Z	3.26	67.23	16.05		80.0	
10505-AAB	LTE-TDD (SC-FDMA, 100% RB, 5 MHz, 64-QAM, UL Subframe=2,3,4,7,8,9)	X	3.26	67.07	15.99	2.23	80.0	± 9.6 %
		Y	3.49	67.88	16.58		80.0	
		Z	3.36	67.18	16.05		80.0	
10506-AAB	LTE-TDD (SC-FDMA, 100% RB, 10 MHz, QPSK, UL Subframe=2,3,4,7,8,9)	X	3.54	69.63	17.10	2.23	80.0	± 9.6 %
		Y	3.92	71.03	17.79		80.0	
		Z	3.67	69.75	17.08		80.0	
10507-AAB	LTE-TDD (SC-FDMA, 100% RB, 10 MHz, 16-QAM, UL Subframe=2,3,4,7,8,9)	X	3.59	67.20	16.44	2.23	80.0	± 9.6 %
		Y	3.80	67.94	16.91		80.0	
		Z	3.70	67.33	16.46		80.0	



EX3DV4- SN:3759

December 16, 2016

10508-AAB	LTE-TDD (SC-FDMA, 100% RB, 10 MHz, 64-QAM, UL Subframe=2,3,4,7,8,9)	X	3.69	67.05	16.42	2.23	80.0	± 9.6 %
		Y	3.89	67.73	16.86		80.0	
		Z	3.79	67.18	16.44		80.0	
10509-AAB	LTE-TDD (SC-FDMA, 100% RB, 15 MHz, QPSK, UL Subframe=2,3,4,7,8,9)	X	4.00	69.12	16.94	2.23	80.0	± 9.6 %
		Y	4.31	70.17	17.46		80.0	
		Z	4.11	69.24	16.92		80.0	
10510-AAB	LTE-TDD (SC-FDMA, 100% RB, 15 MHz, 16-QAM, UL Subframe=2,3,4,7,8,9)	X	4.11	67.23	16.60	2.23	80.0	± 9.6 %
		Y	4.31	67.87	16.99		80.0	
		Z	4.22	67.38	16.62		80.0	
10511-AAB	LTE-TDD (SC-FDMA, 100% RB, 15 MHz, 64-QAM, UL Subframe=2,3,4,7,8,9)	X	4.18	67.07	16.58	2.23	80.0	± 9.6 %
		Y	4.37	67.66	16.94		80.0	
		Z	4.28	67.21	16.60		80.0	
10512-AAB	LTE-TDD (SC-FDMA, 100% RB, 20 MHz, QPSK, UL Subframe=2,3,4,7,8,9)	X	4.04	70.10	17.19	2.23	80.0	± 9.6 %
		Y	4.44	71.46	17.84		80.0	
		Z	4.16	70.23	17.17		80.0	
10513-AAB	LTE-TDD (SC-FDMA, 100% RB, 20 MHz, 16-QAM, UL Subframe=2,3,4,7,8,9)	X	3.98	67.37	16.64	2.23	80.0	± 9.6 %
		Y	4.19	68.10	17.06		80.0	
		Z	4.09	67.53	16.66		80.0	
10514-AAB	LTE-TDD (SC-FDMA, 100% RB, 20 MHz, 64-QAM, UL Subframe=2,3,4,7,8,9)	X	4.03	67.08	16.58	2.23	80.0	± 9.6 %
		Y	4.22	67.73	16.97		80.0	
		Z	4.13	67.24	16.60		80.0	
10515-AAA	IEEE 802.11b WiFi 2.4 GHz (DSSS, 2 Mbps, 99pc duty cycle)	X	0.98	62.80	14.38	0.00	150.0	± 9.6 %
		Y	0.97	62.85	14.44		150.0	
		Z	0.97	62.75	14.34		150.0	
10516-AAA	IEEE 802.11b WiFi 2.4 GHz (DSSS, 5.5 Mbps, 99pc duty cycle)	X	0.54	67.42	15.76	0.00	150.0	± 9.6 %
		Y	0.55	68.23	16.12		150.0	
		Z	0.53	67.19	15.61		150.0	
10517-AAA	IEEE 802.11b WiFi 2.4 GHz (DSSS, 11 Mbps, 99pc duty cycle)	X	0.81	64.28	14.78	0.00	150.0	± 9.6 %
		Y	0.82	64.48	14.91		150.0	
		Z	0.81	64.21	14.72		150.0	
10518-AAA	IEEE 802.11a/h WiFi 5 GHz (OFDM, 9 Mbps, 99pc duty cycle)	X	4.50	66.67	16.13	0.00	150.0	± 9.6 %
		Y	4.56	66.63	16.14		150.0	
		Z	4.53	66.65	16.11		150.0	
10519-AAA	IEEE 802.11a/h WiFi 5 GHz (OFDM, 12 Mbps, 99pc duty cycle)	X	4.67	66.89	16.24	0.00	150.0	± 9.6 %
		Y	4.75	66.87	16.26		150.0	
		Z	4.71	66.88	16.23		150.0	
10520-AAA	IEEE 802.11a/h WiFi 5 GHz (OFDM, 18 Mbps, 99pc duty cycle)	X	4.52	66.84	16.16	0.00	150.0	± 9.6 %
		Y	4.60	66.83	16.18		150.0	
		Z	4.56	66.83	16.15		150.0	
10521-AAA	IEEE 802.11a/h WiFi 5 GHz (OFDM, 24 Mbps, 99pc duty cycle)	X	4.46	66.82	16.14	0.00	150.0	± 9.6 %
		Y	4.53	66.83	16.17		150.0	
		Z	4.50	66.82	16.13		150.0	
10522-AAA	IEEE 802.11a/h WiFi 5 GHz (OFDM, 36 Mbps, 99pc duty cycle)	X	4.52	66.94	16.24	0.00	150.0	± 9.6 %
		Y	4.59	66.90	16.25		150.0	
		Z	4.56	66.92	16.22		150.0	





EX3DV4- SN:3759

December 16, 2016

10523-AAA	IEEE 802.11a/h WiFi 5 GHz (OFDM, 48 Mbps, 99pc duty cycle)	X	4.41	66.82	16.10	0.00	150.0	± 9.6 %
		Y	4.47	66.77	16.09		150.0	
		Z	4.44	66.79	16.07		150.0	
10524-AAA	IEEE 802.11a/h WiFi 5 GHz (OFDM, 54 Mbps, 99pc duty cycle)	X	4.46	66.85	16.20	0.00	150.0	± 9.6 %
		Y	4.53	66.82	16.21		150.0	
		Z	4.50	66.83	16.19		150.0	
10525-AAA	IEEE 802.11ac WiFi (20MHz, MCS0, 99pc duty cycle)	X	4.46	65.92	15.81	0.00	150.0	± 9.6 %
		Y	4.51	65.87	15.81		150.0	
		Z	4.49	65.89	15.79		150.0	
10526-AAA	IEEE 802.11ac WiFi (20MHz, MCS1, 99pc duty cycle)	X	4.61	66.26	15.94	0.00	150.0	± 9.6 %
		Y	4.69	66.24	15.95		150.0	
		Z	4.65	66.25	15.92		150.0	
10527-AAA	IEEE 802.11ac WiFi (20MHz, MCS2, 99pc duty cycle)	X	4.54	66.22	15.88	0.00	150.0	± 9.6 %
		Y	4.61	66.20	15.89		150.0	
		Z	4.57	66.21	15.87		150.0	
10528-AAA	IEEE 802.11ac WiFi (20MHz, MCS3, 99pc duty cycle)	X	4.55	66.23	15.91	0.00	150.0	± 9.6 %
		Y	4.62	66.22	15.92		150.0	
		Z	4.59	66.22	15.90		150.0	
10529-AAA	IEEE 802.11ac WiFi (20MHz, MCS4, 99pc duty cycle)	X	4.55	66.23	15.91	0.00	150.0	± 9.6 %
		Y	4.62	66.22	15.92		150.0	
		Z	4.59	66.22	15.90		150.0	
10531-AAA	IEEE 802.11ac WiFi (20MHz, MCS6, 99pc duty cycle)	X	4.54	66.31	15.91	0.00	150.0	± 9.6 %
		Y	4.62	66.33	15.94		150.0	
		Z	4.58	66.32	15.90		150.0	
10532-AAA	IEEE 802.11ac WiFi (20MHz, MCS7, 99pc duty cycle)	X	4.40	66.17	15.85	0.00	150.0	± 9.6 %
		Y	4.48	66.18	15.87		150.0	
		Z	4.44	66.17	15.84		150.0	
10533-AAA	IEEE 802.11ac WiFi (20MHz, MCS8, 99pc duty cycle)	X	4.56	66.29	15.91	0.00	150.0	± 9.6 %
		Y	4.63	66.26	15.91		150.0	
		Z	4.60	66.27	15.89		150.0	
10534-AAA	IEEE 802.11ac WiFi (40MHz, MCS0, 99pc duty cycle)	X	5.10	66.34	15.99	0.00	150.0	± 9.6 %
		Y	5.15	66.35	15.99		150.0	
		Z	5.13	66.34	15.97		150.0	
10535-AAA	IEEE 802.11ac WiFi (40MHz, MCS1, 99pc duty cycle)	X	5.16	66.51	16.07	0.00	150.0	± 9.6 %
		Y	5.22	66.51	16.06		150.0	
		Z	5.19	66.51	16.04		150.0	
10536-AAA	IEEE 802.11ac WiFi (40MHz, MCS2, 99pc duty cycle)	X	5.03	66.46	16.02	0.00	150.0	± 9.6 %
		Y	5.09	66.47	16.02		150.0	
		Z	5.06	66.46	16.00		150.0	
10537-AAA	IEEE 802.11ac WiFi (40MHz, MCS3, 99pc duty cycle)	X	5.09	66.43	16.01	0.00	150.0	± 9.6 %
		Y	5.15	66.44	16.01		150.0	
		Z	5.12	66.43	15.99		150.0	
10538-AAA	IEEE 802.11ac WiFi (40MHz, MCS4, 99pc duty cycle)	X	5.17	66.44	16.05	0.00	150.0	± 9.6 %
		Y	5.24	66.47	16.07		150.0	
		Z	5.21	66.45	16.04		150.0	
10540-AAA	IEEE 802.11ac WiFi (40MHz, MCS6, 99pc duty cycle)	X	5.10	66.43	16.07	0.00	150.0	± 9.6 %
		Y	5.17	66.48	16.08		150.0	
		Z	5.14	66.46	16.06		150.0	





EX3DV4- SN:3759

December 16, 2016

10541-AAA	IEEE 802.11ac WiFi (40MHz, MCS7, 99pc duty cycle)	X	5.08	66.33	16.00	0.00	150.0	± 9.6 %
		Y	5.14	66.35	16.01		150.0	
		Z	5.11	66.34	15.99		150.0	
10542-AAA	IEEE 802.11ac WiFi (40MHz, MCS8, 99pc duty cycle)	X	5.24	66.41	16.06	0.00	150.0	± 9.6 %
		Y	5.30	66.42	16.06		150.0	
		Z	5.27	66.42	16.04		150.0	
10543-AAA	IEEE 802.11ac WiFi (40MHz, MCS9, 99pc duty cycle)	X	5.31	66.43	16.09	0.00	150.0	± 9.6 %
		Y	5.38	66.46	16.10		150.0	
		Z	5.34	66.45	16.08		150.0	
10544-AAA	IEEE 802.11ac WiFi (80MHz, MCS0, 99pc duty cycle)	X	5.42	66.46	15.99	0.00	150.0	± 9.6 %
		Y	5.46	66.47	15.99		150.0	
		Z	5.44	66.47	15.97		150.0	
10545-AAA	IEEE 802.11ac WiFi (80MHz, MCS1, 99pc duty cycle)	X	5.60	66.86	16.14	0.00	150.0	± 9.6 %
		Y	5.65	66.87	16.14		150.0	
		Z	5.62	66.86	16.11		150.0	
10546-AAA	IEEE 802.11ac WiFi (80MHz, MCS2, 99pc duty cycle)	X	5.47	66.63	16.04	0.00	150.0	± 9.6 %
		Y	5.53	66.69	16.07		150.0	
		Z	5.50	66.67	16.03		150.0	
10547-AAA	IEEE 802.11ac WiFi (80MHz, MCS3, 99pc duty cycle)	X	5.54	66.68	16.06	0.00	150.0	± 9.6 %
		Y	5.60	66.73	16.07		150.0	
		Z	5.57	66.71	16.05		150.0	
10548-AAA	IEEE 802.11ac WiFi (80MHz, MCS4, 99pc duty cycle)	X	5.75	67.47	16.43	0.00	150.0	± 9.6 %
		Y	5.84	67.61	16.49		150.0	
		Z	5.78	67.52	16.42		150.0	
10550-AAA	IEEE 802.11ac WiFi (80MHz, MCS6, 99pc duty cycle)	X	5.50	66.68	16.08	0.00	150.0	± 9.6 %
		Y	5.55	66.69	16.07		150.0	
		Z	5.53	66.68	16.05		150.0	
10551-AAA	IEEE 802.11ac WiFi (80MHz, MCS7, 99pc duty cycle)	X	5.50	66.70	16.05	0.00	150.0	± 9.6 %
		Y	5.56	66.74	16.06		150.0	
		Z	5.53	66.73	16.04		150.0	
10552-AAA	IEEE 802.11ac WiFi (80MHz, MCS8, 99pc duty cycle)	X	5.43	66.53	15.97	0.00	150.0	± 9.6 %
		Y	5.47	66.54	15.97		150.0	
		Z	5.45	66.54	15.95		150.0	
10553-AAA	IEEE 802.11ac WiFi (80MHz, MCS9, 99pc duty cycle)	X	5.50	66.55	16.01	0.00	150.0	± 9.6 %
		Y	5.56	66.59	16.02		150.0	
		Z	5.53	66.58	16.00		150.0	
10554-AAA	IEEE 1602.11ac WiFi (160MHz, MCS0, 99pc duty cycle)	X	5.83	66.82	16.08	0.00	150.0	± 9.6 %
		Y	5.86	66.84	16.08		150.0	
		Z	5.85	66.83	16.06		150.0	
10555-AAA	IEEE 1602.11ac WiFi (160MHz, MCS1, 99pc duty cycle)	X	5.95	67.09	16.20	0.00	150.0	± 9.6 %
		Y	5.99	67.13	16.20		150.0	
		Z	5.97	67.11	16.18		150.0	
10556-AAA	IEEE 1602.11ac WiFi (160MHz, MCS2, 99pc duty cycle)	X	5.97	67.15	16.22	0.00	150.0	± 9.6 %
		Y	6.01	67.18	16.22		150.0	
		Z	5.99	67.16	16.20		150.0	
10557-AAA	IEEE 1602.11ac WiFi (160MHz, MCS3, 99pc duty cycle)	X	5.93	67.04	16.18	0.00	150.0	± 9.6 %
		Y	5.98	67.10	16.20		150.0	
		Z	5.95	67.07	16.17		150.0	



EX3DV4- SN:3759

December 16, 2016

10558-AAA	IEEE 1602.11ac WiFi (160MHz, MCS4, 99pc duty cycle)	X	5.98	67.19	16.27	0.00	150.0	± 9.6 %
		Y	6.03	67.25	16.30		150.0	
		Z	6.00	67.22	16.26		150.0	
10560-AAA	IEEE 1602.11ac WiFi (160MHz, MCS6, 99pc duty cycle)	X	5.97	67.05	16.24	0.00	150.0	± 9.6 %
		Y	6.03	67.11	16.26		150.0	
		Z	6.00	67.09	16.23		150.0	
10561-AAA	IEEE 1602.11ac WiFi (160MHz, MCS7, 99pc duty cycle)	X	5.90	67.03	16.26	0.00	150.0	± 9.6 %
		Y	5.95	67.07	16.28		150.0	
		Z	5.92	67.05	16.25		150.0	
10562-AAA	IEEE 1602.11ac WiFi (160MHz, MCS8, 99pc duty cycle)	X	6.00	67.34	16.42	0.00	150.0	± 9.6 %
		Y	6.07	67.46	16.47		150.0	
		Z	6.03	67.39	16.42		150.0	
10563-AAA	IEEE 1602.11ac WiFi (160MHz, MCS9, 99pc duty cycle)	X	6.12	67.33	16.37	0.00	150.0	± 9.6 %
		Y	6.33	67.84	16.62		150.0	
		Z	6.22	67.58	16.47		150.0	
10564-AAA	IEEE 802.11g WiFi 2.4 GHz (DSSS-OFDM, 9 Mbps, 99pc duty cycle)	X	4.82	66.72	16.26	0.46	150.0	± 9.6 %
		Y	4.88	66.71	16.29		150.0	
		Z	4.85	66.70	16.25		150.0	
10565-AAA	IEEE 802.11g WiFi 2.4 GHz (DSSS-OFDM, 12 Mbps, 99pc duty cycle)	X	5.04	67.16	16.59	0.46	150.0	± 9.6 %
		Y	5.12	67.16	16.62		150.0	
		Z	5.08	67.16	16.58		150.0	
10566-AAA	IEEE 802.11g WiFi 2.4 GHz (DSSS-OFDM, 18 Mbps, 99pc duty cycle)	X	4.87	66.99	16.39	0.46	150.0	± 9.6 %
		Y	4.95	67.00	16.43		150.0	
		Z	4.91	66.99	16.38		150.0	
10567-AAA	IEEE 802.11g WiFi 2.4 GHz (DSSS-OFDM, 24 Mbps, 99pc duty cycle)	X	4.91	67.40	16.77	0.46	150.0	± 9.6 %
		Y	4.98	67.39	16.78		150.0	
		Z	4.95	67.42	16.77		150.0	
10568-AAA	IEEE 802.11g WiFi 2.4 GHz (DSSS-OFDM, 36 Mbps, 99pc duty cycle)	X	4.78	66.73	16.14	0.46	150.0	± 9.6 %
		Y	4.86	66.77	16.20		150.0	
		Z	4.82	66.72	16.12		150.0	
10569-AAA	IEEE 802.11g WiFi 2.4 GHz (DSSS-OFDM, 48 Mbps, 99pc duty cycle)	X	4.87	67.52	16.84	0.46	150.0	± 9.6 %
		Y	4.92	67.45	16.82		150.0	
		Z	4.90	67.50	16.82		150.0	
10570-AAA	IEEE 802.11g WiFi 2.4 GHz (DSSS-OFDM, 54 Mbps, 99pc duty cycle)	X	4.90	67.36	16.78	0.46	150.0	± 9.6 %
		Y	4.97	67.31	16.76		150.0	
		Z	4.94	67.35	16.75		150.0	
10571-AAA	IEEE 802.11b WiFi 2.4 GHz (DSSS, 1 Mbps, 90pc duty cycle)	X	1.15	63.68	14.91	0.46	130.0	± 9.6 %
		Y	1.16	63.96	15.15		130.0	
		Z	1.16	63.74	14.90		130.0	
10572-AAA	IEEE 802.11b WiFi 2.4 GHz (DSSS, 2 Mbps, 90pc duty cycle)	X	1.16	64.17	15.22	0.46	130.0	± 9.6 %
		Y	1.18	64.46	15.46		130.0	
		Z	1.17	64.22	15.21		130.0	
10573-AAA	IEEE 802.11b WiFi 2.4 GHz (DSSS, 5.5 Mbps, 90pc duty cycle)	X	1.12	74.63	18.77	0.46	130.0	± 9.6 %
		Y	1.36	77.97	20.13		130.0	
		Z	1.14	74.59	18.64		130.0	
10574-AAA	IEEE 802.11b WiFi 2.4 GHz (DSSS, 11 Mbps, 90pc duty cycle)	X	1.20	68.65	17.56	0.46	130.0	± 9.6 %
		Y	1.24	69.24	17.90		130.0	
		Z	1.22	68.76	17.56		130.0	





EX3DV4- SN:3759

December 16, 2016

10575-AAA	IEEE 802.11g WiFi 2.4 GHz (DSSS-OFDM, 6 Mbps, 90pc duty cycle)	X	4.59	66.43	16.23	0.46	130.0	± 9.6 %
		Y	4.66	66.45	16.30		130.0	
		Z	4.63	66.42	16.22		130.0	
10576-AAA	IEEE 802.11g WiFi 2.4 GHz (DSSS-OFDM, 9 Mbps, 90pc duty cycle)	X	4.62	66.61	16.31	0.46	130.0	± 9.6 %
		Y	4.68	66.61	16.36		130.0	
		Z	4.65	66.59	16.29		130.0	
10577-AAA	IEEE 802.11g WiFi 2.4 GHz (DSSS-OFDM, 12 Mbps, 90pc duty cycle)	X	4.81	66.89	16.48	0.46	130.0	± 9.6 %
		Y	4.89	66.92	16.54		130.0	
		Z	4.85	66.89	16.47		130.0	
10578-AAA	IEEE 802.11g WiFi 2.4 GHz (DSSS-OFDM, 18 Mbps, 90pc duty cycle)	X	4.71	67.05	16.59	0.46	130.0	± 9.6 %
		Y	4.79	67.06	16.63		130.0	
		Z	4.75	67.05	16.58		130.0	
10579-AAA	IEEE 802.11g WiFi 2.4 GHz (DSSS-OFDM, 24 Mbps, 90pc duty cycle)	X	4.46	66.25	15.84	0.46	130.0	± 9.6 %
		Y	4.55	66.36	15.95		130.0	
		Z	4.50	66.26	15.83		130.0	
10580-AAA	IEEE 802.11g WiFi 2.4 GHz (DSSS-OFDM, 36 Mbps, 90pc duty cycle)	X	4.51	66.30	15.86	0.46	130.0	± 9.6 %
		Y	4.60	66.39	15.97		130.0	
		Z	4.55	66.30	15.85		130.0	
10581-AAA	IEEE 802.11g WiFi 2.4 GHz (DSSS-OFDM, 48 Mbps, 90pc duty cycle)	X	4.60	67.07	16.52	0.46	130.0	± 9.6 %
		Y	4.68	67.08	16.55		130.0	
		Z	4.64	67.07	16.50		130.0	
10582-AAA	IEEE 802.11g WiFi 2.4 GHz (DSSS-OFDM, 54 Mbps, 90pc duty cycle)	X	4.40	66.00	15.61	0.46	130.0	± 9.6 %
		Y	4.50	66.13	15.74		130.0	
		Z	4.45	66.01	15.61		130.0	
10583-AAA	IEEE 802.11a/h WiFi 5 GHz (OFDM, 6 Mbps, 90pc duty cycle)	X	4.59	66.43	16.23	0.46	130.0	± 9.6 %
		Y	4.66	66.45	16.30		130.0	
		Z	4.63	66.42	16.22		130.0	
10584-AAA	IEEE 802.11a/h WiFi 5 GHz (OFDM, 9 Mbps, 90pc duty cycle)	X	4.62	66.61	16.31	0.46	130.0	± 9.6 %
		Y	4.68	66.61	16.36		130.0	
		Z	4.65	66.59	16.29		130.0	
10585-AAA	IEEE 802.11a/h WiFi 5 GHz (OFDM, 12 Mbps, 90pc duty cycle)	X	4.81	66.89	16.48	0.46	130.0	± 9.6 %
		Y	4.89	66.92	16.54		130.0	
		Z	4.85	66.89	16.47		130.0	
10586-AAA	IEEE 802.11a/h WiFi 5 GHz (OFDM, 18 Mbps, 90pc duty cycle)	X	4.71	67.05	16.59	0.46	130.0	± 9.6 %
		Y	4.79	67.06	16.63		130.0	
		Z	4.75	67.05	16.58		130.0	
10587-AAA	IEEE 802.11a/h WiFi 5 GHz (OFDM, 24 Mbps, 90pc duty cycle)	X	4.46	66.25	15.84	0.46	130.0	± 9.6 %
		Y	4.55	66.36	15.95		130.0	
		Z	4.50	66.26	15.83		130.0	
10588-AAA	IEEE 802.11a/h WiFi 5 GHz (OFDM, 36 Mbps, 90pc duty cycle)	X	4.51	66.30	15.86	0.46	130.0	± 9.6 %
		Y	4.60	66.39	15.97		130.0	
		Z	4.55	66.30	15.85		130.0	
10589-AAA	IEEE 802.11a/h WiFi 5 GHz (OFDM, 48 Mbps, 90pc duty cycle)	X	4.60	67.07	16.52	0.46	130.0	± 9.6 %
		Y	4.68	67.08	16.55		130.0	
		Z	4.64	67.07	16.50		130.0	
10590-AAA	IEEE 802.11a/h WiFi 5 GHz (OFDM, 54 Mbps, 90pc duty cycle)	X	4.40	66.00	15.61	0.46	130.0	± 9.6 %
		Y	4.50	66.13	15.74		130.0	
		Z	4.45	66.01	15.61		130.0	



EX3DV4- SN:3759

December 16, 2016

10591-AAA	IEEE 802.11n (HT Mixed, 20MHz, MCS0, 90pc duty cycle)	X	4.75	66.52	16.35	0.46	130.0	± 9.6 %
		Y	4.81	66.52	16.40		130.0	
		Z	4.78	66.51	16.34		130.0	
10592-AAA	IEEE 802.11n (HT Mixed, 20MHz, MCS1, 90pc duty cycle)	X	4.89	66.84	16.48	0.46	130.0	± 9.6 %
		Y	4.97	66.86	16.53		130.0	
		Z	4.93	66.84	16.47		130.0	
10593-AAA	IEEE 802.11n (HT Mixed, 20MHz, MCS2, 90pc duty cycle)	X	4.81	66.73	16.35	0.46	130.0	± 9.6 %
		Y	4.89	66.77	16.41		130.0	
		Z	4.85	66.73	16.34		130.0	
10594-AAA	IEEE 802.11n (HT Mixed, 20MHz, MCS3, 90pc duty cycle)	X	4.86	66.91	16.51	0.46	130.0	± 9.6 %
		Y	4.94	66.93	16.56		130.0	
		Z	4.90	66.91	16.50		130.0	
10595-AAA	IEEE 802.11n (HT Mixed, 20MHz, MCS4, 90pc duty cycle)	X	4.83	66.85	16.40	0.46	130.0	± 9.6 %
		Y	4.91	66.88	16.46		130.0	
		Z	4.87	66.85	16.39		130.0	
10596-AAA	IEEE 802.11n (HT Mixed, 20MHz, MCS5, 90pc duty cycle)	X	4.76	66.83	16.40	0.46	130.0	± 9.6 %
		Y	4.85	66.87	16.46		130.0	
		Z	4.80	66.83	16.38		130.0	
10597-AAA	IEEE 802.11n (HT Mixed, 20MHz, MCS6, 90pc duty cycle)	X	4.71	66.72	16.27	0.46	130.0	± 9.6 %
		Y	4.79	66.78	16.35		130.0	
		Z	4.75	66.73	16.26		130.0	
10598-AAA	IEEE 802.11n (HT Mixed, 20MHz, MCS7, 90pc duty cycle)	X	4.70	66.97	16.55	0.46	130.0	± 9.6 %
		Y	4.78	67.01	16.60		130.0	
		Z	4.74	66.98	16.54		130.0	
10599-AAA	IEEE 802.11n (HT Mixed, 40MHz, MCS0, 90pc duty cycle)	X	5.41	67.02	16.56	0.46	130.0	± 9.6 %
		Y	5.48	67.08	16.61		130.0	
		Z	5.45	67.06	16.56		130.0	
10600-AAA	IEEE 802.11n (HT Mixed, 40MHz, MCS1, 90pc duty cycle)	X	5.53	67.40	16.73	0.46	130.0	± 9.6 %
		Y	5.61	67.47	16.78		130.0	
		Z	5.56	67.40	16.70		130.0	
10601-AAA	IEEE 802.11n (HT Mixed, 40MHz, MCS2, 90pc duty cycle)	X	5.43	67.18	16.64	0.46	130.0	± 9.6 %
		Y	5.50	67.24	16.68		130.0	
		Z	5.46	67.19	16.61		130.0	
10602-AAA	IEEE 802.11n (HT Mixed, 40MHz, MCS3, 90pc duty cycle)	X	5.54	67.27	16.59	0.46	130.0	± 9.6 %
		Y	5.59	67.24	16.60		130.0	
		Z	5.55	67.21	16.54		130.0	
10603-AAA	IEEE 802.11n (HT Mixed, 40MHz, MCS4, 90pc duty cycle)	X	5.60	67.54	16.87	0.46	130.0	± 9.6 %
		Y	5.68	67.57	16.90		130.0	
		Z	5.63	67.52	16.83		130.0	
10604-AAA	IEEE 802.11n (HT Mixed, 40MHz, MCS5, 90pc duty cycle)	X	5.46	67.15	16.66	0.46	130.0	± 9.6 %
		Y	5.48	67.04	16.62		130.0	
		Z	5.46	67.05	16.58		130.0	
10605-AAA	IEEE 802.11n (HT Mixed, 40MHz, MCS6, 90pc duty cycle)	X	5.53	67.33	16.74	0.46	130.0	± 9.6 %
		Y	5.59	67.35	16.77		130.0	
		Z	5.55	67.31	16.70		130.0	
10606-AAA	IEEE 802.11n (HT Mixed, 40MHz, MCS7, 90pc duty cycle)	X	5.26	66.63	16.24	0.46	130.0	± 9.6 %
		Y	5.35	66.76	16.34		130.0	
		Z	5.30	66.67	16.24		130.0	





EX3DV4- SN:3759

December 16, 2016

10607-AAA	IEEE 802.11ac WiFi (20MHz, MCS0, 90pc duty cycle)	X	4.58	65.82	15.97	0.46	130.0	± 9.6 %	
		Y	4.64	65.82	16.01			130.0	
		Z	4.61	65.80	15.95			130.0	
10608-AAA	IEEE 802.11ac WiFi (20MHz, MCS1, 90pc duty cycle)	X	4.75	66.20	16.13	0.46	130.0	± 9.6 %	
		Y	4.83	66.22	16.18			130.0	
		Z	4.79	66.19	16.11			130.0	
10609-AAA	IEEE 802.11ac WiFi (20MHz, MCS2, 90pc duty cycle)	X	4.64	66.03	15.95	0.46	130.0	± 9.6 %	
		Y	4.72	66.07	16.02			130.0	
		Z	4.68	66.02	15.94			130.0	
10610-AAA	IEEE 802.11ac WiFi (20MHz, MCS3, 90pc duty cycle)	X	4.69	66.20	16.12	0.46	130.0	± 9.6 %	
		Y	4.77	66.23	16.17			130.0	
		Z	4.73	66.19	16.11			130.0	
10611-AAA	IEEE 802.11ac WiFi (20MHz, MCS4, 90pc duty cycle)	X	4.61	65.99	15.96	0.46	130.0	± 9.6 %	
		Y	4.69	66.03	16.02			130.0	
		Z	4.64	65.99	15.95			130.0	
10612-AAA	IEEE 802.11ac WiFi (20MHz, MCS5, 90pc duty cycle)	X	4.61	66.12	16.00	0.46	130.0	± 9.6 %	
		Y	4.70	66.18	16.06			130.0	
		Z	4.65	66.12	15.98			130.0	
10613-AAA	IEEE 802.11ac WiFi (20MHz, MCS6, 90pc duty cycle)	X	4.61	65.99	15.87	0.46	130.0	± 9.6 %	
		Y	4.70	66.08	15.96			130.0	
		Z	4.65	66.00	15.86			130.0	
10614-AAA	IEEE 802.11ac WiFi (20MHz, MCS7, 90pc duty cycle)	X	4.56	66.21	16.12	0.46	130.0	± 9.6 %	
		Y	4.64	66.25	16.18			130.0	
		Z	4.60	66.21	16.11			130.0	
10615-AAA	IEEE 802.11ac WiFi (20MHz, MCS8, 90pc duty cycle)	X	4.60	65.81	15.72	0.46	130.0	± 9.6 %	
		Y	4.69	65.87	15.81			130.0	
		Z	4.64	65.79	15.71			130.0	
10616-AAA	IEEE 802.11ac WiFi (40MHz, MCS0, 90pc duty cycle)	X	5.23	66.28	16.18	0.46	130.0	± 9.6 %	
		Y	5.29	66.33	16.22			130.0	
		Z	5.26	66.29	16.17			130.0	
10617-AAA	IEEE 802.11ac WiFi (40MHz, MCS1, 90pc duty cycle)	X	5.29	66.46	16.24	0.46	130.0	± 9.6 %	
		Y	5.36	66.48	16.27			130.0	
		Z	5.32	66.45	16.21			130.0	
10618-AAA	IEEE 802.11ac WiFi (40MHz, MCS2, 90pc duty cycle)	X	5.18	66.47	16.26	0.46	130.0	± 9.6 %	
		Y	5.24	66.50	16.29			130.0	
		Z	5.21	66.46	16.24			130.0	
10619-AAA	IEEE 802.11ac WiFi (40MHz, MCS3, 90pc duty cycle)	X	5.19	66.25	16.09	0.46	130.0	± 9.6 %	
		Y	5.26	66.32	16.14			130.0	
		Z	5.22	66.26	16.07			130.0	
10620-AAA	IEEE 802.11ac WiFi (40MHz, MCS4, 90pc duty cycle)	X	5.28	66.29	16.16	0.46	130.0	± 9.6 %	
		Y	5.36	66.37	16.22			130.0	
		Z	5.31	66.31	16.14			130.0	
10621-AAA	IEEE 802.11ac WiFi (40MHz, MCS5, 90pc duty cycle)	X	5.29	66.47	16.37	0.46	130.0	± 9.6 %	
		Y	5.35	66.48	16.39			130.0	
		Z	5.32	66.47	16.35			130.0	
10622-AAA	IEEE 802.11ac WiFi (40MHz, MCS6, 90pc duty cycle)	X	5.30	66.62	16.44	0.46	130.0	± 9.6 %	
		Y	5.36	66.63	16.45			130.0	
		Z	5.33	66.61	16.41			130.0	



EX3DV4– SN:3759

December 16, 2016

10623-AAA	IEEE 802.11ac WiFi (40MHz, MCS7, 90pc duty cycle)	X	5.18	66.12	16.05	0.46	130.0	± 9.6 %
		Y	5.24	66.18	16.11		130.0	
		Z	5.21	66.13	16.03		130.0	
10624-AAA	IEEE 802.11ac WiFi (40MHz, MCS8, 90pc duty cycle)	X	5.37	66.33	16.23	0.46	130.0	± 9.6 %
		Y	5.43	66.38	16.27		130.0	
		Z	5.40	66.34	16.21		130.0	
10625-AAA	IEEE 802.11ac WiFi (40MHz, MCS9, 90pc duty cycle)	X	5.66	67.10	16.66	0.46	130.0	± 9.6 %
		Y	5.80	67.35	16.80		130.0	
		Z	5.73	67.22	16.70		130.0	
10626-AAA	IEEE 802.11ac WiFi (80MHz, MCS0, 90pc duty cycle)	X	5.54	66.36	16.15	0.46	130.0	± 9.6 %
		Y	5.58	66.40	16.18		130.0	
		Z	5.56	66.37	16.13		130.0	
10627-AAA	IEEE 802.11ac WiFi (80MHz, MCS1, 90pc duty cycle)	X	5.76	66.90	16.39	0.46	130.0	± 9.6 %
		Y	5.82	66.93	16.41		130.0	
		Z	5.78	66.89	16.35		130.0	
10628-AAA	IEEE 802.11ac WiFi (80MHz, MCS2, 90pc duty cycle)	X	5.55	66.39	16.06	0.46	130.0	± 9.6 %
		Y	5.62	66.51	16.13		130.0	
		Z	5.58	66.43	16.05		130.0	
10629-AAA	IEEE 802.11ac WiFi (80MHz, MCS3, 90pc duty cycle)	X	5.63	66.46	16.09	0.46	130.0	± 9.6 %
		Y	5.71	66.59	16.17		130.0	
		Z	5.65	66.47	16.07		130.0	
10630-AAA	IEEE 802.11ac WiFi (80MHz, MCS4, 90pc duty cycle)	X	5.98	67.71	16.72	0.46	130.0	± 9.6 %
		Y	6.12	68.01	16.88		130.0	
		Z	6.03	67.80	16.73		130.0	
10631-AAA	IEEE 802.11ac WiFi (80MHz, MCS5, 90pc duty cycle)	X	5.93	67.68	16.90	0.46	130.0	± 9.6 %
		Y	6.03	67.84	16.98		130.0	
		Z	5.98	67.75	16.91		130.0	
10632-AAA	IEEE 802.11ac WiFi (80MHz, MCS6, 90pc duty cycle)	X	5.74	67.01	16.58	0.46	130.0	± 9.6 %
		Y	5.79	67.00	16.58		130.0	
		Z	5.76	66.99	16.55		130.0	
10633-AAA	IEEE 802.11ac WiFi (80MHz, MCS7, 90pc duty cycle)	X	5.62	66.59	16.20	0.46	130.0	± 9.6 %
		Y	5.68	66.67	16.24		130.0	
		Z	5.65	66.62	16.18		130.0	
10634-AAA	IEEE 802.11ac WiFi (80MHz, MCS8, 90pc duty cycle)	X	5.60	66.63	16.28	0.46	130.0	± 9.6 %
		Y	5.67	66.70	16.32		130.0	
		Z	5.64	66.66	16.27		130.0	
10635-AAA	IEEE 802.11ac WiFi (80MHz, MCS9, 90pc duty cycle)	X	5.47	65.91	15.63	0.46	130.0	± 9.6 %
		Y	5.56	66.05	15.73		130.0	
		Z	5.51	65.94	15.62		130.0	
10636-AAA	IEEE 1602.11ac WiFi (160MHz, MCS0, 90pc duty cycle)	X	5.95	66.72	16.24	0.46	130.0	± 9.6 %
		Y	5.99	66.78	16.28		130.0	
		Z	5.97	66.73	16.22		130.0	
10637-AAA	IEEE 1602.11ac WiFi (160MHz, MCS1, 90pc duty cycle)	X	6.10	67.09	16.41	0.46	130.0	± 9.6 %
		Y	6.14	67.14	16.44		130.0	
		Z	6.11	67.09	16.38		130.0	
10638-AAA	IEEE 1602.11ac WiFi (160MHz, MCS2, 90pc duty cycle)	X	6.10	67.06	16.37	0.46	130.0	± 9.6 %
		Y	6.15	67.12	16.41		130.0	
		Z	6.12	67.07	16.35		130.0	





EX3DV4– SN:3759

December 16, 2016

10639-AAA	IEEE 1602.11ac WiFi (160MHz, MCS3, 90pc duty cycle)	X	6.07	67.01	16.39	0.46	130.0	± 9.6 %
		Y	6.13	67.09	16.44		130.0	
		Z	6.10	67.03	16.38		130.0	
10640-AAA	IEEE 1602.11ac WiFi (160MHz, MCS4, 90pc duty cycle)	X	6.07	66.99	16.32	0.46	130.0	± 9.6 %
		Y	6.14	67.11	16.39		130.0	
		Z	6.09	67.02	16.31		130.0	
10641-AAA	IEEE 1602.11ac WiFi (160MHz, MCS5, 90pc duty cycle)	X	6.13	66.94	16.31	0.46	130.0	± 9.6 %
		Y	6.17	66.99	16.35		130.0	
		Z	6.14	66.93	16.28		130.0	
10642-AAA	IEEE 1602.11ac WiFi (160MHz, MCS6, 90pc duty cycle)	X	6.17	67.20	16.62	0.46	130.0	± 9.6 %
		Y	6.22	67.26	16.65		130.0	
		Z	6.19	67.22	16.61		130.0	
10643-AAA	IEEE 1602.11ac WiFi (160MHz, MCS7, 90pc duty cycle)	X	6.00	66.86	16.34	0.46	130.0	± 9.6 %
		Y	6.05	66.94	16.39		130.0	
		Z	6.02	66.87	16.31		130.0	
10644-AAA	IEEE 1602.11ac WiFi (160MHz, MCS8, 90pc duty cycle)	X	6.13	67.25	16.56	0.46	130.0	± 9.6 %
		Y	6.22	67.46	16.67		130.0	
		Z	6.17	67.33	16.57		130.0	
10645-AAA	IEEE 1602.11ac WiFi (160MHz, MCS9, 90pc duty cycle)	X	6.30	67.39	16.59	0.46	130.0	± 9.6 %
		Y	6.61	68.18	16.99		130.0	
		Z	6.44	67.75	16.73		130.0	
10646-AAC	LTE-TDD (SC-FDMA, 1 RB, 5 MHz, QPSK, UL Subframe=2,7)	X	11.76	96.35	31.88	9.30	60.0	± 9.6 %
		Y	19.05	107.46	35.85		60.0	
		Z	11.88	94.80	30.95		60.0	
10647-AAB	LTE-TDD (SC-FDMA, 1 RB, 20 MHz, QPSK, UL Subframe=2,7)	X	10.62	94.79	31.49	9.30	60.0	± 9.6 %
		Y	16.98	105.61	35.43		60.0	
		Z	10.96	93.72	30.71		60.0	
10648-AAA	CDMA2000 (1x Advanced)	X	0.66	63.03	10.35	0.00	150.0	± 9.6 %
		Y	0.70	63.32	10.86		150.0	
		Z	0.69	63.19	10.65		150.0	

<sup>E</sup> Uncertainty is determined using the max. deviation from linear response applying rectangular distribution and is expressed for the square of the field value.



Product Service

## **ANNEX B**

### **DIPOLE CALIBRATION REPORTS**





Product Service

**Calibration Laboratory of  
Schmid & Partner  
Engineering AG**  
Zeughausstrasse 43, 8004 Zurich, Switzerland



**S** Schweizerischer Kalibrierdienst  
**S** Service suisse d'étalonnage  
**C** Servizio svizzero di taratura  
**S** Swiss Calibration Service

Accredited by the Swiss Accreditation Service (SAS)  
The Swiss Accreditation Service is one of the signatories to the EA  
Multilateral Agreement for the recognition of calibration certificates

Accreditation No.: **SCS 0108**

Client **TÜV SÜD UK**

Certificate No: **D450V3-1094\_Dec16**

**CALIBRATION CERTIFICATE**

Object **D450V3 - SN: 1094**

Calibration procedure(s) **QA CAL-15.v8  
Calibration procedure for dipole validation kits below 700 MHz**

Calibration date: **December 08, 2016**

This calibration certificate documents the traceability to national standards, which realize the physical units of measurements (SI).  
The measurements and the uncertainties with confidence probability are given on the following pages and are part of the certificate.

All calibrations have been conducted in the closed laboratory facility: environment temperature (22 ± 3)°C and humidity < 70%.

Calibration Equipment used (M&TE critical for calibration)

Primary Standards	ID #	Cal Date (Certificate No.)	Scheduled Calibration
Power meter NRP	SN: 104778	06-Apr-16 (No. 217-02288/02289)	Apr-17
Power sensor NRP-Z91	SN: 103244	06-Apr-16 (No. 217-02288)	Apr-17
Power sensor NRP-Z91	SN: 103245	06-Apr-16 (No. 217-02289)	Apr-17
Reference 20 dB Attenuator	SN: 5277 (20x)	05-Apr-16 (No. 217-02293)	Apr-17
Type-N mismatch combination	SN: 5047.2 / 06327	05-Apr-16 (No. 217-02295)	Apr-17
Reference Probe ET3DV6	SN: 1507	31-Dec-15 (No. ET3-1507_Dec15)	Dec-16
DAE4	SN: 654	12-Aug-16 (No. DAE4-654_Aug16)	Aug-17
Secondary Standards	ID #	Check Date (in house)	Scheduled Check
Power meter E4419B	SN: GB41293874	06-Apr-16 (No. 217-02285/02284)	In house check: Jun-18
Power sensor E4412A	SN: MY41498087	06-Apr-16 (No. 217-02285)	In house check: Jun-18
Power sensor E4412A	SN: 000110210	06-Apr-16 (No. 217-02284)	In house check: Jun-18
RF generator HP 8648C	SN: US3642U01700	04-Aug-99 (in house check Jun-16)	In house check: Jun-18
Network Analyzer HP 8753E	SN: US37390585	18-Oct-01 (in house check Oct-16)	In house check: Oct-17

Calibrated by: **Name: Michael Weber, Function: Laboratory Technician, Signature: [Signature]**

Approved by: **Name: Katja Pokovic, Function: Technical Manager, Signature: [Signature]**

Issued: December 9, 2016

This calibration certificate shall not be reproduced except in full without written approval of the laboratory.



Product Service

**Calibration Laboratory of**  
Schmid & Partner  
Engineering AG  
Zeughausstrasse 43, 8004 Zurich, Switzerland



**S** Schweizerischer Kalibrierdienst  
**C** Service suisse d'étalonnage  
**S** Servizio svizzero di taratura  
**S** Swiss Calibration Service

Accredited by the Swiss Accreditation Service (SAS)  
The Swiss Accreditation Service is one of the signatories to the EA  
Multilateral Agreement for the recognition of calibration certificates

Accreditation No.: SCS 0108

**Glossary:**

TSL	tissue simulating liquid
ConvF	sensitivity in TSL / NORM x,y,z
N/A	not applicable or not measured

**Calibration is Performed According to the Following Standards:**

- IEEE Std 1528-2013, "IEEE Recommended Practice for Determining the Peak Spatial-Averaged Specific Absorption Rate (SAR) in the Human Head from Wireless Communications Devices: Measurement Techniques", June 2013
- IEC 62209-1, "Procedure to measure the Specific Absorption Rate (SAR) for hand-held devices used in close proximity to the ear (frequency range of 300 MHz to 3 GHz)", February 2005
- IEC 62209-2, "Procedure to determine the Specific Absorption Rate (SAR) for wireless communication devices used in close proximity to the human body (frequency range of 30 MHz to 6 GHz)", March 2010
- KDB 865664, "SAR Measurement Requirements for 100 MHz to 6 GHz"

**Additional Documentation:**

- DASY4/5 System Handbook

**Methods Applied and Interpretation of Parameters:**

- Measurement Conditions:** Further details are available from the Validation Report at the end of the certificate. All figures stated in the certificate are valid at the frequency indicated.
- Antenna Parameters with TSL:** The dipole is mounted with the spacer to position its feed point exactly below the center marking of the flat phantom section, with the arms oriented parallel to the body axis.
- Feed Point Impedance and Return Loss:** These parameters are measured with the dipole positioned under the liquid filled phantom. The impedance stated is transformed from the measurement at the SMA connector to the feed point. The Return Loss ensures low reflected power. No uncertainty required.
- Electrical Delay:** One-way delay between the SMA connector and the antenna feed point. No uncertainty required.
- SAR measured:** SAR measured at the stated antenna input power.
- SAR normalized:** SAR as measured, normalized to an input power of 1 W at the antenna connector.
- SAR for nominal TSL parameters:** The measured TSL parameters are used to calculate the nominal SAR result.

The reported uncertainty of measurement is stated as the standard uncertainty of measurement multiplied by the coverage factor  $k=2$ , which for a normal distribution corresponds to a coverage probability of approximately 95%.



### Measurement Conditions

DASY system configuration, as far as not given on page 1.

DASY Version	DASY5	V52.8.8
Extrapolation	Advanced Extrapolation	
Phantom	ELI4 Flat Phantom	Shell thickness: $2 \pm 0.2$ mm
Distance Dipole Center - TSL	15 mm	with Spacer
Zoom Scan Resolution	dx, dy, dz = 5 mm	
Frequency	450 MHz $\pm$ 1 MHz	

### Head TSL parameters

The following parameters and calculations were applied.

	Temperature	Permittivity	Conductivity
Nominal Head TSL parameters	22.0 °C	43.5	0.87 mho/m
Measured Head TSL parameters	(22.0 $\pm$ 0.2) °C	43.4 $\pm$ 6 %	0.87 mho/m $\pm$ 6 %
Head TSL temperature change during test	< 0.5 °C	----	----

### SAR result with Head TSL

SAR averaged over 1 cm <sup>3</sup> (1 g) of Head TSL	Condition	
SAR measured	250 mW input power	1.11 W/kg
SAR for nominal Head TSL parameters	normalized to 1W	<b>4.44 W/kg <math>\pm</math> 18.1 % (k=2)</b>

SAR averaged over 10 cm <sup>3</sup> (10 g) of Head TSL	condition	
SAR measured	250 mW input power	0.748 W/kg
SAR for nominal Head TSL parameters	normalized to 1W	<b>2.99 W/kg <math>\pm</math> 17.6 % (k=2)</b>

### Body TSL parameters

The following parameters and calculations were applied.

	Temperature	Permittivity	Conductivity
Nominal Body TSL parameters	22.0 °C	56.7	0.94 mho/m
Measured Body TSL parameters	(22.0 $\pm$ 0.2) °C	57.6 $\pm$ 6 %	0.96 mho/m $\pm$ 6 %
Body TSL temperature change during test	< 0.5 °C	----	----

### SAR result with Body TSL

SAR averaged over 1 cm <sup>3</sup> (1 g) of Body TSL	Condition	
SAR measured	250 mW input power	1.18 W/kg
SAR for nominal Body TSL parameters	normalized to 1W	<b>4.66 W/kg <math>\pm</math> 18.1 % (k=2)</b>

SAR averaged over 10 cm <sup>3</sup> (10 g) of Body TSL	condition	
SAR measured	250 mW input power	0.798 W/kg
SAR for nominal Body TSL parameters	normalized to 1W	<b>3.15 W/kg <math>\pm</math> 17.6 % (k=2)</b>





### Appendix (Additional assessments outside the scope of SCS 0108)

#### Antenna Parameters with Head TSL

Impedance, transformed to feed point	60.5 $\Omega$ - 2.3 j $\Omega$
Return Loss	- 20.2 dB

#### Antenna Parameters with Body TSL

Impedance, transformed to feed point	57.3 $\Omega$ - 7.5 j $\Omega$
Return Loss	- 20.2 dB

#### General Antenna Parameters and Design

Electrical Delay (one direction)	1.349 ns
----------------------------------	----------

After long term use with 100W radiated power, only a slight warming of the dipole near the feedpoint can be measured.

The dipole is made of standard semirigid coaxial cable. The center conductor of the feeding line is directly connected to the second arm of the dipole. The antenna is therefore short-circuited for DC-signals. On some of the dipoles, small end caps are added to the dipole arms in order to improve matching when loaded according to the position as explained in the "Measurement Conditions" paragraph. The SAR data are not affected by this change. The overall dipole length is still according to the Standard.

No excessive force must be applied to the dipole arms, because they might bend or the soldered connections near the feedpoint may be damaged.

#### Additional EUT Data

Manufactured by	SPEAG
Manufactured on	September 15, 2015



**DASY5 Validation Report for Head TSL**

Date: 08.12.2016

Test Laboratory: SPEAG, Zurich, Switzerland

**DUT: Dipole 450 MHz; Type: D450V3; Serial: D450V3 - SN: 1094**

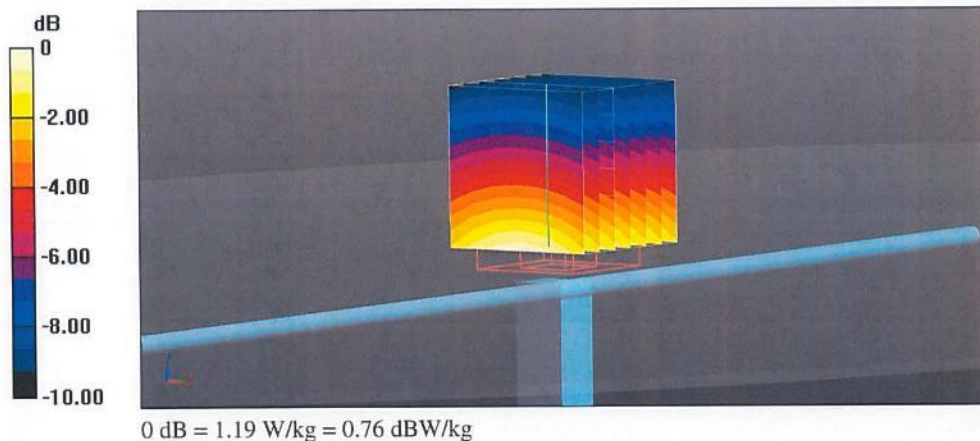
Communication System: UID 0 - CW; Frequency: 450 MHz  
 Medium parameters used:  $f = 450 \text{ MHz}$ ;  $\sigma = 0.87 \text{ S/m}$ ;  $\epsilon_r = 43.4$ ;  $\rho = 1000 \text{ kg/m}^3$   
 Phantom section: Flat Section  
 Measurement Standard: DASY5 (IEEE/IEC/ANSI C63.19-2011)

**DASY52 Configuration:**

- Probe: ET3DV6 - SN1507; ConvF(6.58, 6.58, 6.58); Calibrated: 31.12.2015;
- Sensor-Surface: 4mm (Mechanical Surface Detection)
- Electronics: DAE4 Sn654; Calibrated: 12.08.2016
- Phantom: ELI v4.0; Type: QDOVA001BB; Serial: TP:1003
- DASY52 52.8.8(1258); SEMCAD X 14.6.10(7372)

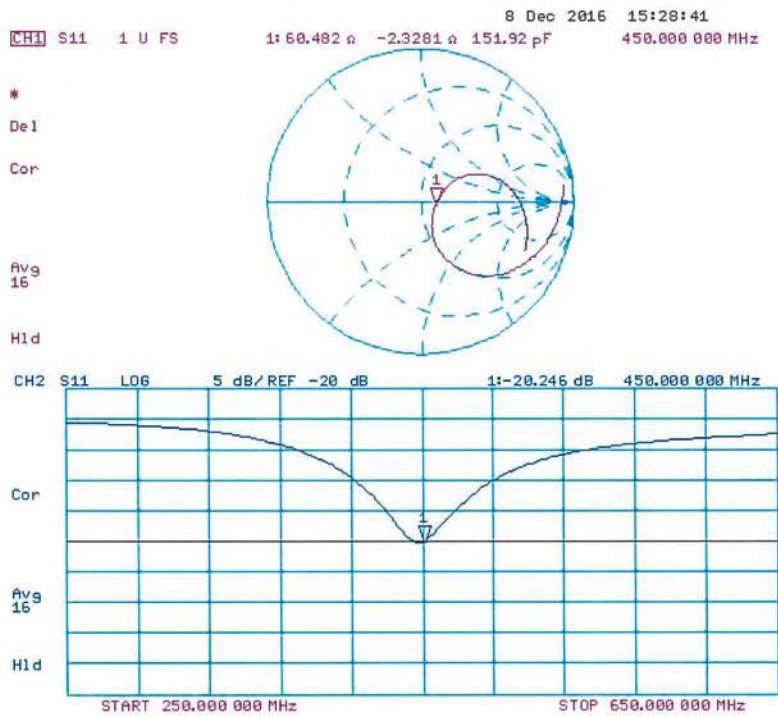
**Dipole Calibration for Head Tissue/d=15mm, Pin=250mW/Zoom Scan (7x7x7)/Cube 0:**

Measurement grid:  $dx=5\text{mm}$ ,  $dy=5\text{mm}$ ,  $dz=5\text{mm}$   
 Reference Value = 39.10 V/m; Power Drift = -0.02 dB  
 Peak SAR (extrapolated) = 1.58 W/kg  
**SAR(1 g) = 1.11 W/kg; SAR(10 g) = 0.748 W/kg**  
 Maximum value of SAR (measured) = 1.19 W/kg





Impedance Measurement Plot for Head TSL







## DASY5 Validation Report for Body TSL

Date: 08.12.2016

Test Laboratory: SPEAG, Zurich, Switzerland

**DUT: Dipole 450 MHz D450V3; Type: D450V3; Serial: D450V3 - SN: 1094**

Communication System: UID 0 - CW; Frequency: 450 MHz

Medium parameters used:  $f = 450$  MHz;  $\sigma = 0.96$  S/m;  $\epsilon_r = 57.6$ ;  $\rho = 1000$  kg/m<sup>3</sup>

Phantom section: Flat Section

Measurement Standard: DASY5 (IEEE/IEC/ANSI C63.19-2011)

DASY52 Configuration:

- Probe: ET3DV6 - SN1507; ConvF(6.99, 6.99, 6.99); Calibrated: 31.12.2015;
- Sensor-Surface: 4mm (Mechanical Surface Detection)
- Electronics: DAE4 Sn654; Calibrated: 12.08.2016
- Phantom: ELI v4.0; Type: QDOVA001BB; Serial: TP:1003
- DASY52 52.8.8(1258); SEMCAD X 14.6.10(7372)

### Dipole Calibration for Body Tissue/d=15mm, Pin=250mW/Zoom Scan (7x7x7)/Cube 0:

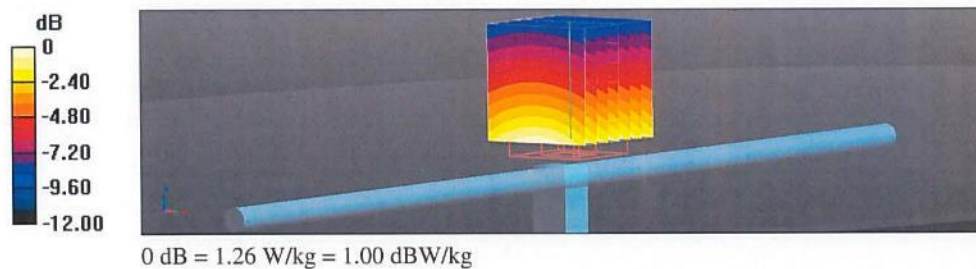
Measurement grid: dx=5mm, dy=5mm, dz=5mm

Reference Value = 37.12 V/m; Power Drift = -0.01 dB

Peak SAR (extrapolated) = 1.81 W/kg

**SAR(1 g) = 1.18 W/kg; SAR(10 g) = 0.798 W/kg**

Maximum value of SAR (measured) = 1.26 W/kg





Product Service

### Impedance Measurement Plot for Body TSL

