

Antenna Specification

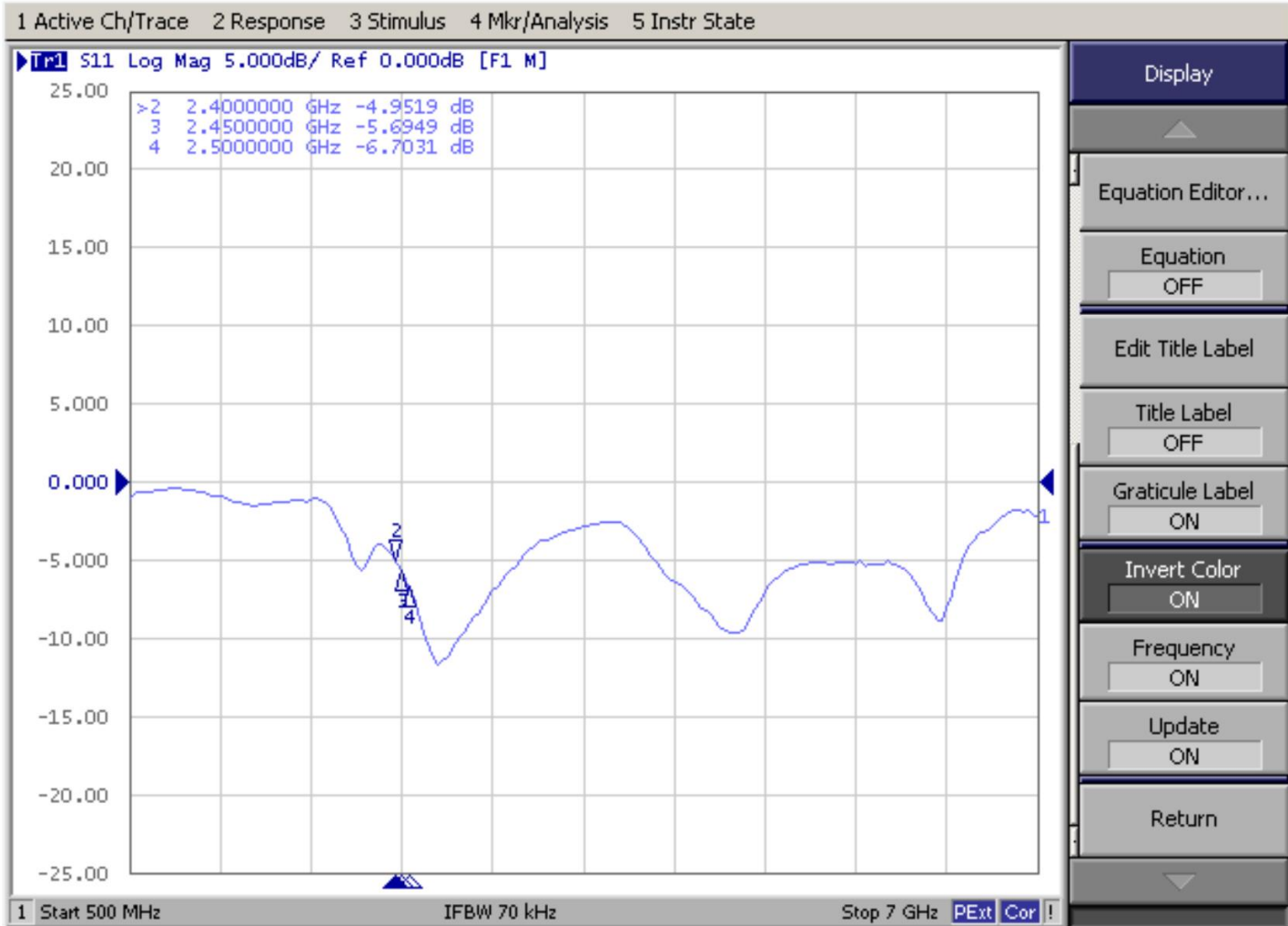
Summary

| ITEM | ANT SPEC |
|----------------------|----------------------------------|
| Model Name | B171PQA0A01 |
| MAX. Gain | 1.61 |
| Polarization | X Y Z |
| Azimuth Beam Pattern | Omni-directional |
| Impedance | 50 Ohm |
| Manufacture | Thundercomm Technology Co., Ltd. |

Antenna Photo & Length (mm)



Return loss (standing wave)

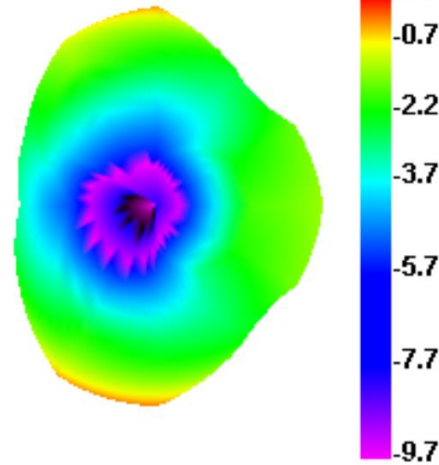


Efficiency and Gain

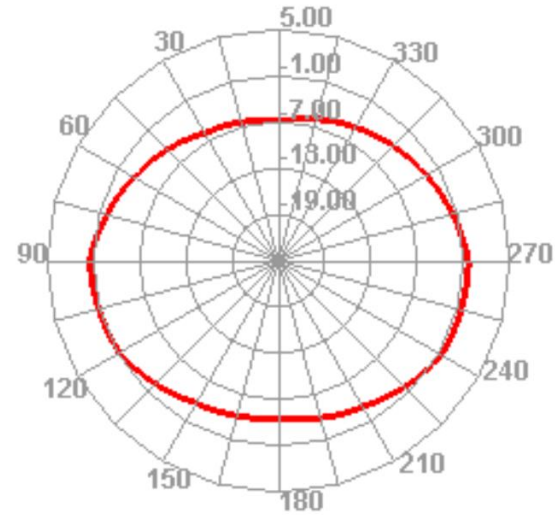
| Freq (MHz) | Effi (%) | Gain (dBi) |
|---------------|-------------|---------------|
| 2400 | 41.68 | 0.28 |
| 2410 | 40.64 | -0.35 |
| 2420 | 40.23 | -0.55 |
| 2430 | 40.57 | -0.63 |
| 2440 | 42.57 | -0.19 |
| 2450 | 42.71 | -0.12 |
| 2460 | 43.36 | 0.09 |
| 2470 | 43.05 | 0.27 |
| 2480 | 49.38 | 0.97 |
| 2490 | 57.73 | 1.61 |
| 2500 | 60.19 | 1.61 |

Antenna Pattern

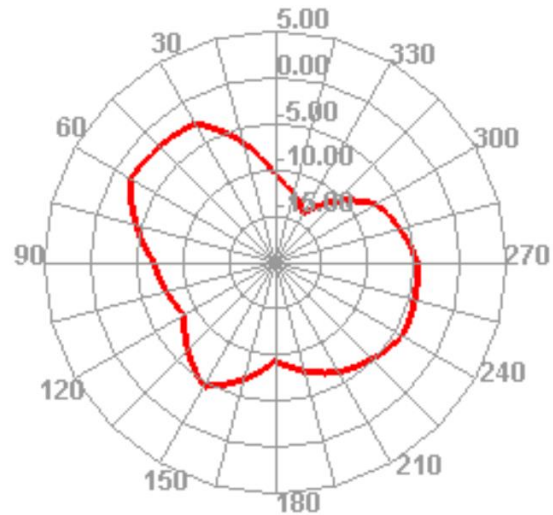
2400.000MHz



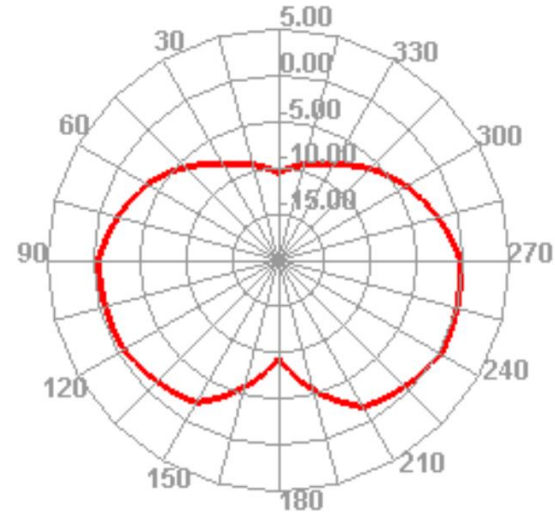
2400.000MHz H



2400.000MHz E1

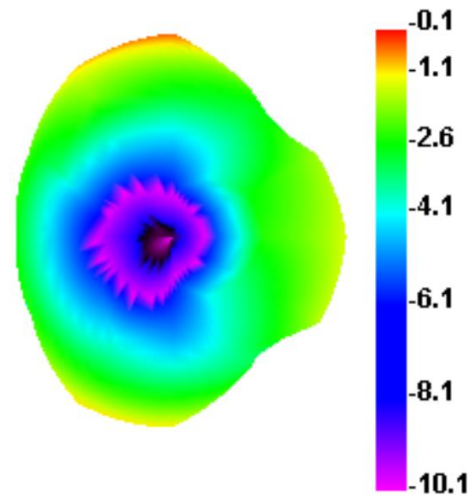


2400.000MHz E2

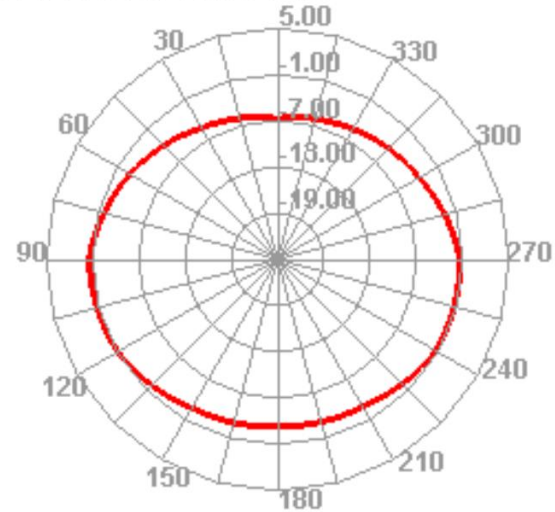


Antenna Pattern

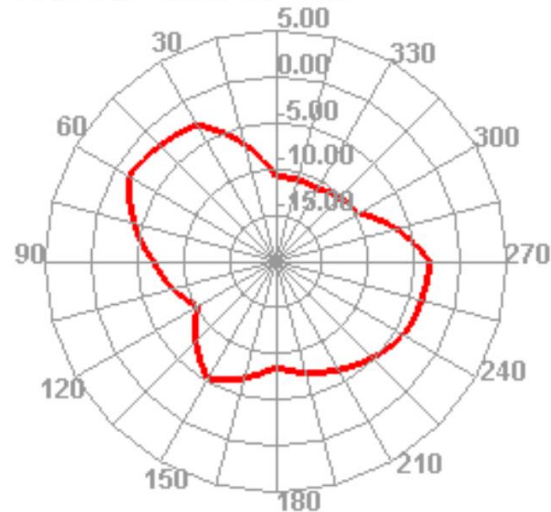
2450.000MHz



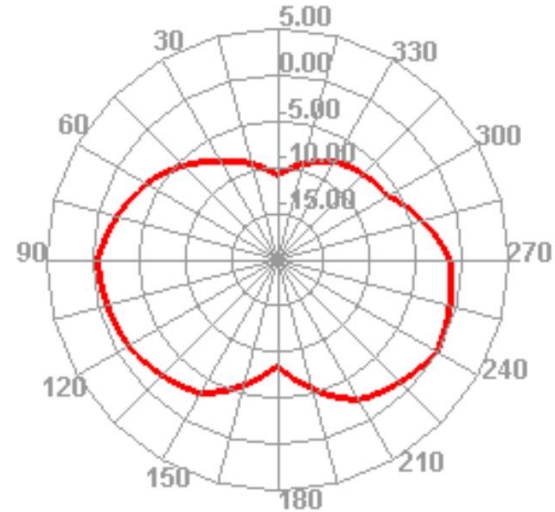
2450.000MHz H



2450.000MHz E1

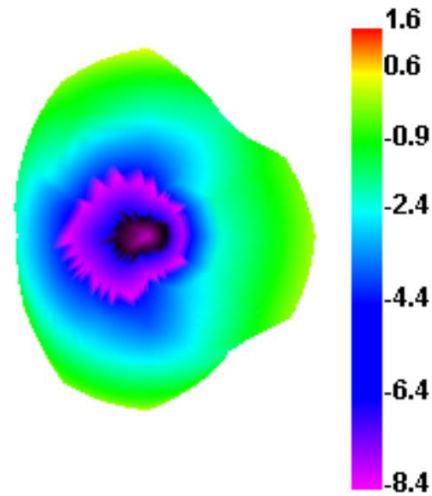


2450.000MHz E2

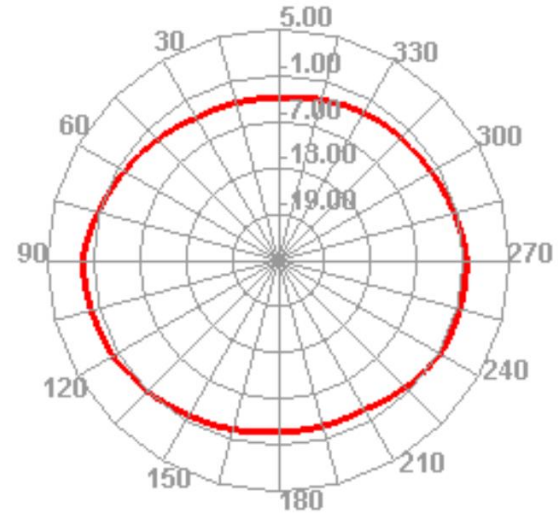


Antenna Pattern

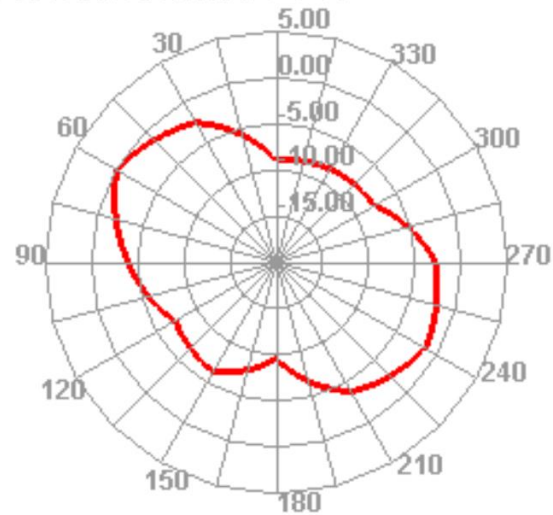
2500.000MHz



2500.000MHz H



2500.000MHz E1



2500.000MHz E2

