

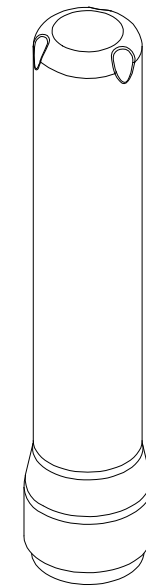
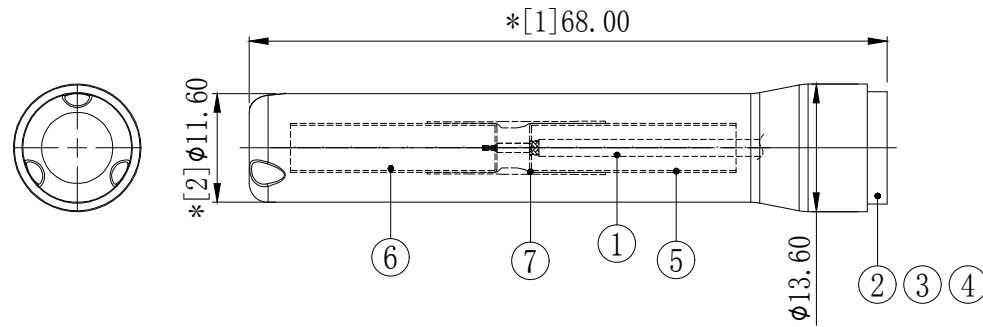
SPECIFICATION FOR APPROVAL

CUSTOMER	Chengdu Accsoon Technology Co., LTD.
CUS. CODE	
CUS. MODEL	
HJ-Tech CODE	3D4001BK00-001
PRO. NAME	External direct connection antenna
SPECIFICATION	2.5dBi wifi dual-band antenna
DESCRIPTION	RG178 wire + SMA male and female pin, G40 black rod sleeve OD: 13.6*L68mm
DATE	2022/4/23

/ SUPPLIER		
PREPARED	CHECKER	APPROVER
S. He	何修明	

/ CUSTOMER		
TRANSCTOR	CHECKER	APPROVER

6	7	8
REVISION	DESCRIPTION	DATE
A0	FIRST RELEASE	22. 04. 23
		DRAFTER
		SQW



7	2TB050BK1-020	OD: 5.0*L20.0mm, 无卤阻燃, 超薄型热缩套管黑色	1	---
6	2YG099	铜管: OD5.2**0.8*L22.00mm, 双频信号铜管	1	---
5	2YG098	铜管: OD5.2**1.55*L22.00mm, 双频信号铜管	1	---
4	2SBKG4000	内六角短天线杆套, OD13.6*L68.0mm, TPEE, 黑色	1	---
3	2LC15PF804-5	SMA母针OD1.5*L6.2, 镀金	1	---
2	2LC15PM034-8	SMA公头, H8.00-L15.00mm, 主体镀镍	1	---
1	2C5R17811BN1	微细同轴电缆, RG178, 银锡线, 棕色	1	---
No.	PART NUMBER	PART NAME & DESCRIPTION	Q' TY	REMARKS

GENERAL TOLERANCE:

LINEAR:	
X	±2.00
X.X	±1.00
X.XX	±0.50
X.XXX	±0.30
ANGLE:	
X°	±4.00°
X.X°	±3.00°
X.XX°	±2.00°
X.XXX°	±1.00°

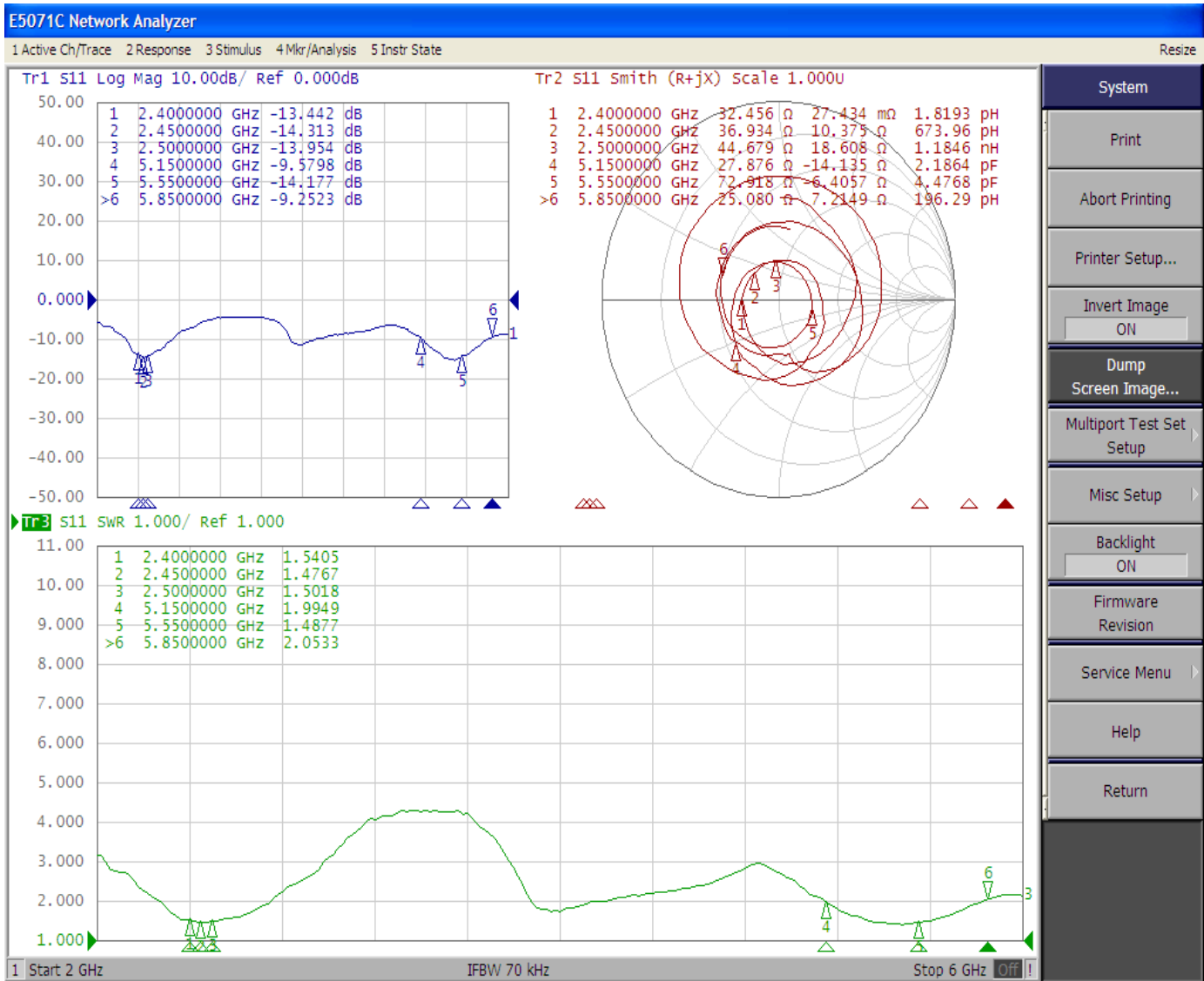
HJ-Tech		东莞市皇捷通讯科技有限公司		
FILE NAME:	产品图	TITLE:	射频天线组件	
ENG/DATE:	SQW/21.04.06		2Bi WiFi双频天线	
CHE/DATE:		P/N:	RG178线+SMA公头母针, G40黑色杆套OD: 13.6*L68mm	
APP/DATE:			3D4001BK00-001	
UNIT:	mm	SCALE:	1:1	REVISION: A0
				SHEET: 1/1

H525

COMPLIANCE WITH THE REQUIREMENT: RoHS; HF; SONY SS-00259; OTHERS
*NO USING ESTRICED AND BANNED SUBSTANCE

1	2	3	4	5	6	7	8
A							
B							
C							
D							
E							
F							
G							
H							

DONGGUAN HUANGJIE COMMUNICATION TECHNOLOGY CO., LTD.



System

Print

Abort Printing

Printer Setup...

Invert Image

ON

Dump Screen Image...

Multiport Test Set Setup

Misc Setup

Backlight

ON

Firmware Revision

Service Menu

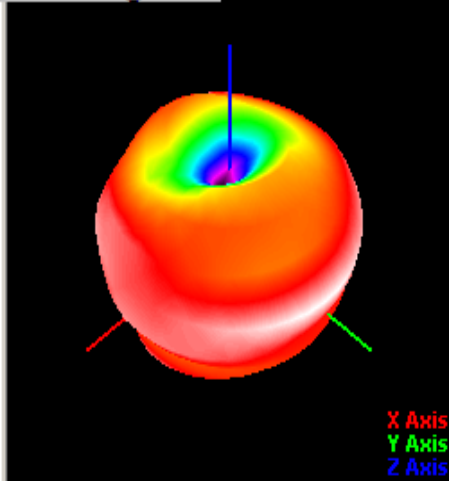
Help

Return

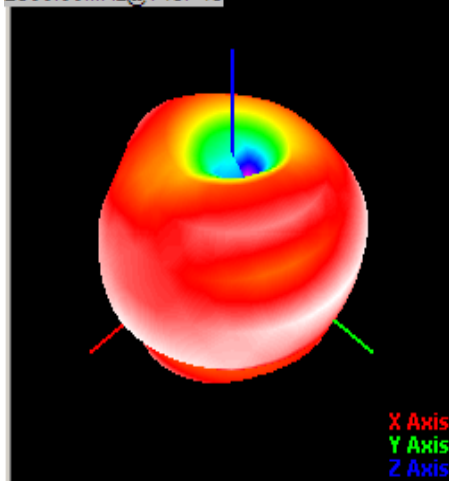
DONGGUAN HUANGJIE COMMUNICATION TECHNOLOGY CO., LTD.

Frequency ID	1	2	3	4	5	6	7	8	9	10	11	12	13	14	15	16	17	18	19
Frequency (MHz)	2400.0	2410.0	2420.0	2430.0	2440.0	2450.0	2460.0	2470.0	2480.0	2490.0	2500.0	5150.0	5250.0	5350.0	5450.0	5550.0	5650.0	5750.0	5850.0
Point Values																			
Ant. Port Input Pwr. (dBm)	0.00	0.00	0.00	0.00	0.00	0.00	0.00	0.00	0.00	0.00	0.00	0.00	0.00	0.00	0.00	0.00	0.00	0.00	0.00
Tot. Rad. Pwr. (dBm)	-1.95	-1.64	-1.58	-1.43	-1.59	-1.72	-1.68	-1.52	-1.69	-1.56	-1.35	-4.14	-3.39	-3.65	-3.99	-3.48	-4.19	-3.46	-4.19
Peak EIRP (dBm)	1.42	1.77	1.83	1.95	1.80	1.67	1.67	1.75	1.45	1.48	1.61	1.57	1.99	1.94	1.80	1.74	1.74	1.23	1.51
Gain(dBi)	1.37	1.41	2.48	0.38	0.39	1.39	1.35	-0.26	0.14	0.04	-2.97	-5.71	0.38	1.59	1.79	2.53	1.93	1.69	0.71
Efficiency (dB)	-1.95	-1.64	-1.58	-1.43	-1.59	-1.72	-1.68	-1.52	-1.69	-1.56	-1.35	-4.14	-3.39	-3.65	-3.99	-3.48	-4.19	-3.46	-4.19
Efficiency (%)	63.80	68.60	69.60	71.90	69.40	67.30	67.90	70.50	67.70	69.80	73.20	48.50	49.80	53.20	53.90	54.90	50.10	49.10	48.10

2400.00MHz@T45P45



2500.00MHz@T45P45



5550.00MHz@T45P45

