



# Item 12 Xiphos Micro External Photographs

## 1 Xiphos Micro Overview

The Xiphos 4G LTE Micro product is an LTE system, complete with all radio and core functionalities that go into a telecom system. The Micro components of Xiphos are:

- Micro LTE eNodeB with 2X5W RF output
- Server Platform for Evolved Packet Core (EPC), Home Subscriber Server (HSS), and O&M SW, with virtualized Space for Local Applications.
- GPS
- Two options for powering the Xiphos Micro unit: battery power and external power

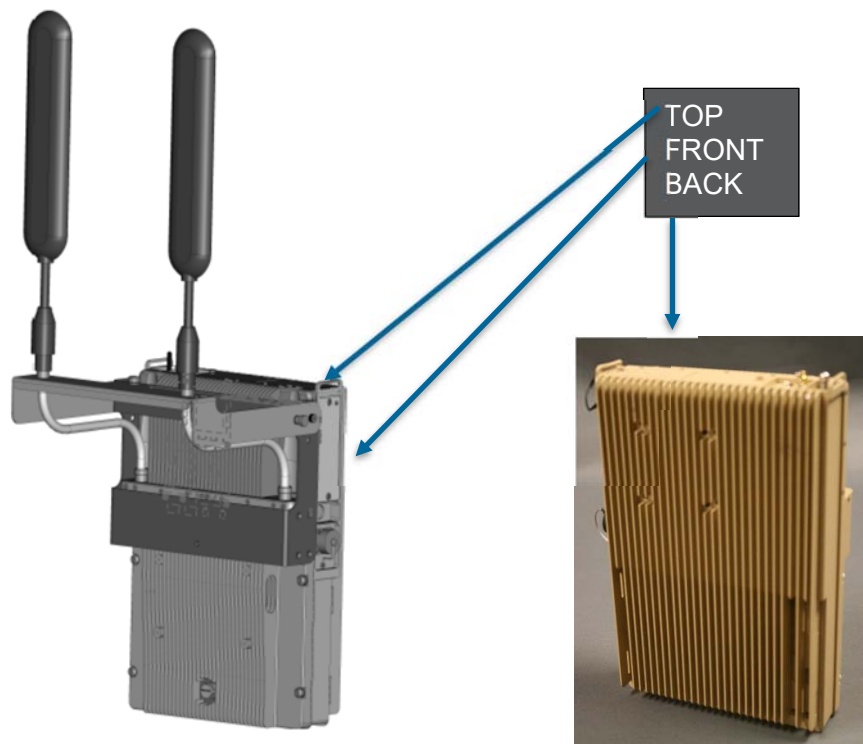


Figure 1: Xiphos Micro

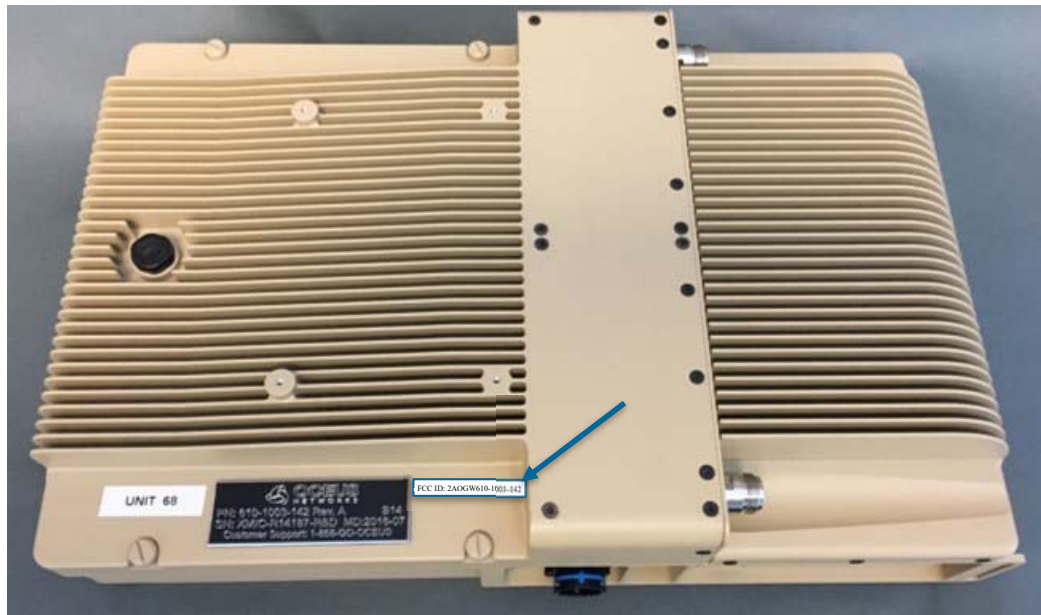


Figure 2: Xiphos Micro Front (where intended FCC label goes)

## 1.1 External Interfaces

The Xiphos Micro includes two LTE Antenna ports, front panel and side panel interfaces as shown below.

External Interfaces	
Front Panel	Side Panel
ON/OFF Switch	Power Input
GPS Antenna Port	Zero Button
Three LEDs: PWR, RADIO, USER	VGA Port
LED Activate Button	Two USB ports
RUI - Remote User Interface USB Port	Console – Serial COMM port to core processor
POE (Power Over Ethernet) Port	ENB – eNodeB Console Port
VMNIC Ethernet Ports 1-4	

The figures below show these interface ports.

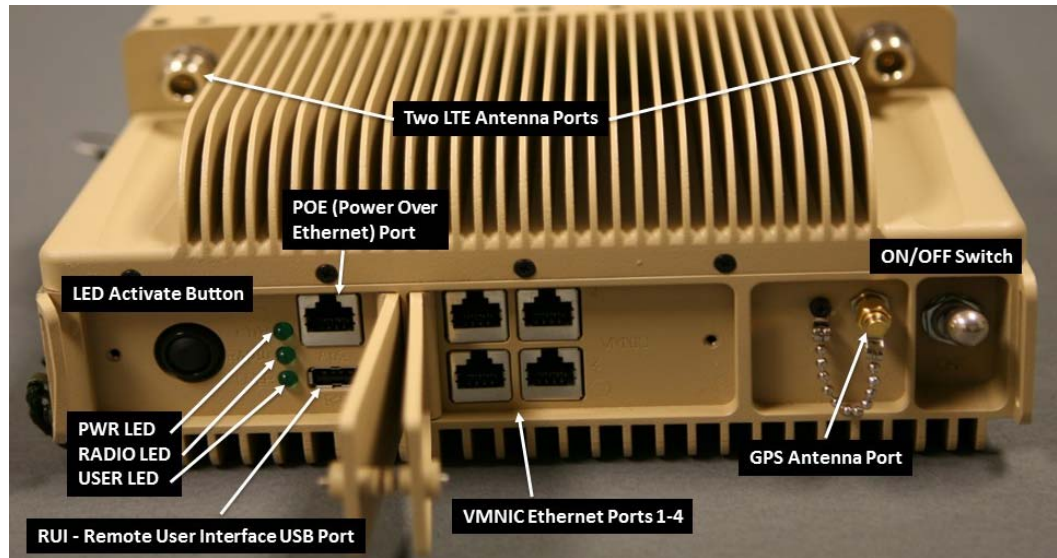


Figure 3: TOP: LTE Antenna and Front Panel Interfaces



Figure 4: RIGHT SIDE: Panel Interfaces

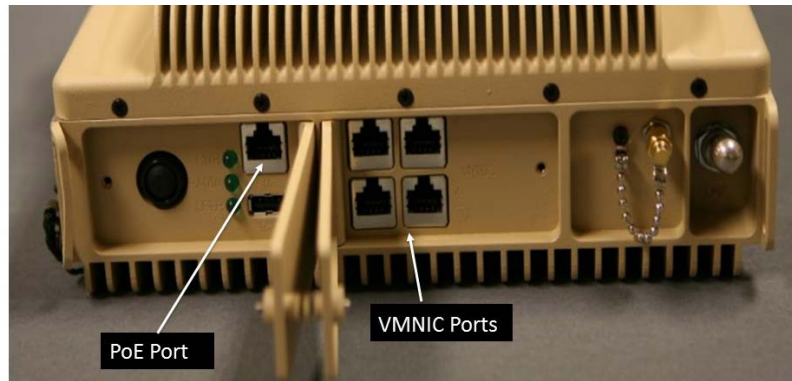


Figure 5: TOP Customer Network Connections

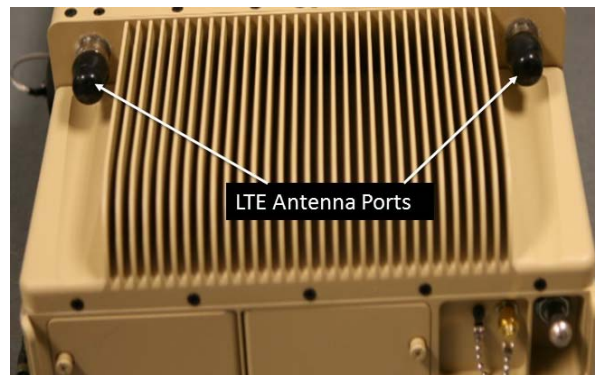


Figure 6: TOP Micro LTE Antenna Connectors



Figure 7: Xiphos Micro Bottom