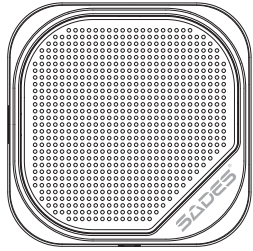
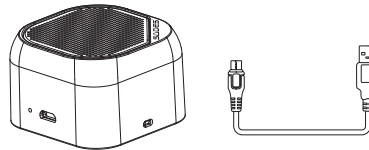


SADES®
Q3

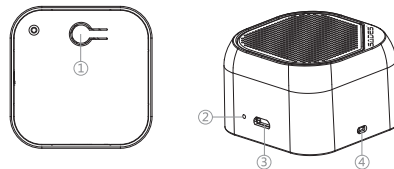


BLUETOOTH SPEAKER

What's Included



At a Glance

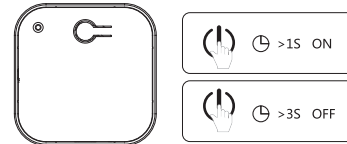


- 1. Multi-function button
- 2. LED indicator
- 3. Micro USB charging port
- 4. Microphone

01

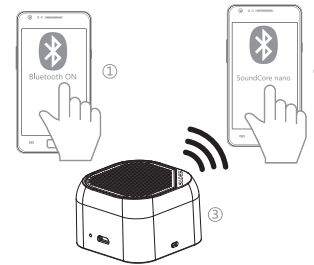
Using Your SoundCore

1. Turn on-off



SoundCore will automatically turn off after 10 minutes if no device is connected.

2. Pair with your device



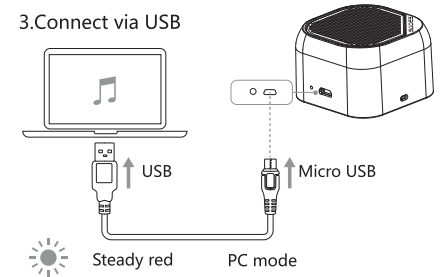
02

- Rapidly flashing blue Pairing mode
- Steady blue Connected to a device

When turned on, SoundCore will automatically connect to the last connected device if available. If not, SoundCore will enter pairing mode.

To pair a different device, first disable Bluetooth on the connected device and then repeat the pairing steps. Having connection problems? Remove SoundCore from your device's Bluetooth history, ensure it's less than 3 feet away then try pairing again.

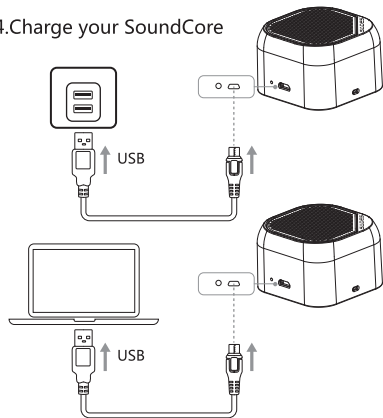
3. Connect via USB



03

Turn on the PC after inserting the headset into your PC via USB plug, then the computer will install the USB 2.0 driver automatically. When the installing is finished, the headset will work.

4. Charge your SoundCore



04

- Flashing red Low power
- Steady red Charging
- Off Fully charged

Use the included USB cable to charge your SoundCore and make sure it is fully charged before first use.

Controls

- x1 Play/pause
- x2 Skip forward
- x1 Answer/end call
- >1s Reject call

05

Specifications

Input:	5V/0.5A
Audio Output	3W
Battery Capacity	400mAh
Charging Time	1.5 hours
Play Time (varies by volume level and content)	4-5 hours
Size	54x54x33 mm 2.1x2.1x1.3 in
Weight	82g/2.9 oz
Range	10m/33ft

FCC Statement

This device complies with Part 15 of the FCC Rules. Operation is subject to the following two conditions: (1) This device may not cause harmful interference, and (2) this device must accept any interference received, including interference that may cause undesired operation. Warning: Changes or modifications not expressly approved by the party responsible for compliance could void the user's authority to operate the equipment.

06

Note: This equipment has been tested and found to comply with the limits for a Class B digital device, pursuant to Part 15 of the FCC Rules. These limits are designed to provide reasonable protection against harmful interference in a residential installation.

This equipment generates uses and can radiate radio frequency energy and, if not installed and used in accordance with the instructions, may cause harmful interference to radio communications. However, there is no guarantee that interference will not occur in a particular installation. If this equipment does cause harmful interference to radio or television reception, which can be determined by turning the equipment off and on, the user is encouraged to try to correct the interference by one or more of the following measures: (1) Reorient or relocate the receiving antenna.

- (2) Increase the separation between the equipment and receiver.
- (3) Connect the equipment into an outlet on a circuit different from that to which the receiver is connected
- (4) Consult the dealer or an experienced radio/TV technician for help.

RF Warning Statement

The device has been evaluated to meet general RF exposure requirements. The device can be used in portable exposure conditions without restriction.

07

FCC Warning

This device complies with Part 15 of the FCC Rules. Operation is subject to the following two conditions:

(1) This device may not cause harmful interference, and (2) this device must accept any interference received, including interference that may cause undesired operation.

NOTE: Any changes or modifications to this unit not expressly approved by the party responsible for compliance could void the user's authority to operate the equipment.