



## ISY994zw Quick Setup Guide

This product is a security enabled Z-Wave product that is able to use encrypted Z-Wave messages to communicate with other security enabled Z-Wave products.

This product can be included and operated in any Z-Wave network with other Z-Wave certified devices from any other manufacturers. All constantly powered nodes in the same network will act as repeaters regardless of the vendor in order to increase reliability of the network.

### 1. ISY Installation

1. Connect one of the included Cat5e cable to ISY's **Network Port** and to your network hub.

**Note:** the network must *initially* be DHCP enabled. If DHCP is not enabled, please configure ISY with a static IP address the instructions for which you will find [here](#).

### 2. Host Computer Configuration

1. If you do not have Java installed, please install the latest for your platform. You may find the latest Java downloads at <http://www.java.com/getjava>. Please choose the latest JRE for your platform
2. Start a Web Browser of your choice and go to <http://isy.universal-devices.com/994> ; when prompted to authenticate, enter **admin** for both user-id and password
3. If you would like to access your ISY without a browser, please go to <http://isy.universal-devices.com/994/admin.jnlp>
4. On Universal Devices Administrative Console, choose **Help | About** (Figure 2)

- On the About Dialog, locate **My URL** and write down the URL. For example, in Figure 2B, the URL is <http://192.168.0.101>. You may also access your ISY using this URL (as long as your router does not change the address for ISY)

**Note:** If you have Windows XP, Vista, or Windows 7 and if you have UPnP (XP)/Device Discovery (Vista) enabled on your computer, you will see an **ISY** icon appear in My Network Places (XP) or Network (Vista/Windows 7). (Figure 2A)

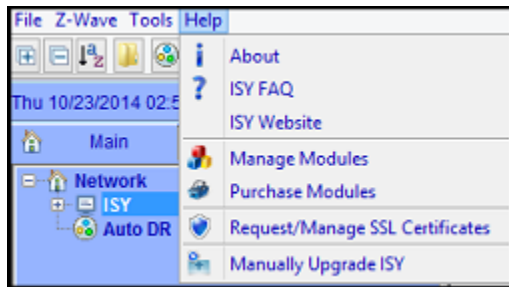


Figure 2

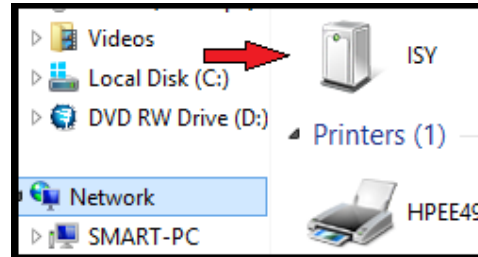


Figure 2A



Figure 2B

### 3. Final Steps

#### Set Time and Location

Click on the **Configuration | System** tab and set the Time and the Physical Location for the unit (used for Sunrise/Sunset calculations). See Figure 3A.



Figure 3A

## Start Adding Your Z-Wave Devices!

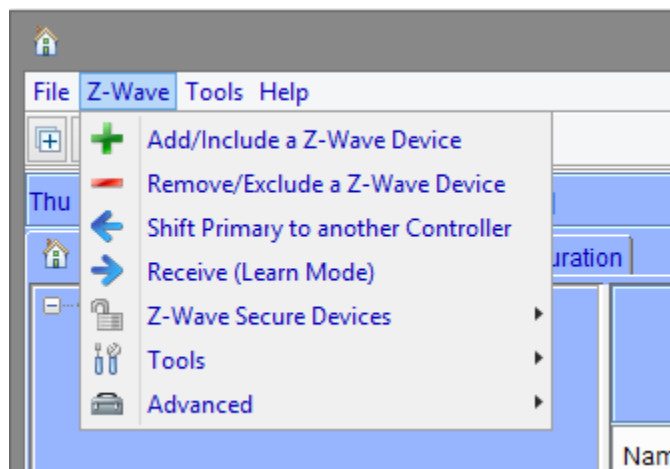


Figure 3B

See the **ISY-994 Series Z-Wave Module Guide** for full instructions  
<http://www.universal-devices.com/docs/production/zw.doc>

## Create some Programs

After you have added some Z-Wave devices, and if so desired, you can create programs to automatically control your devices, send notifications, and do many other things. Click on the **Programs | Details** tab and you will see a sample **Query All** program. Below that there is an option to “Add Program” Click on that. The example for this program will be to turn On the Porch Light at 7pm and off 4 hours later. See Figure 3C.

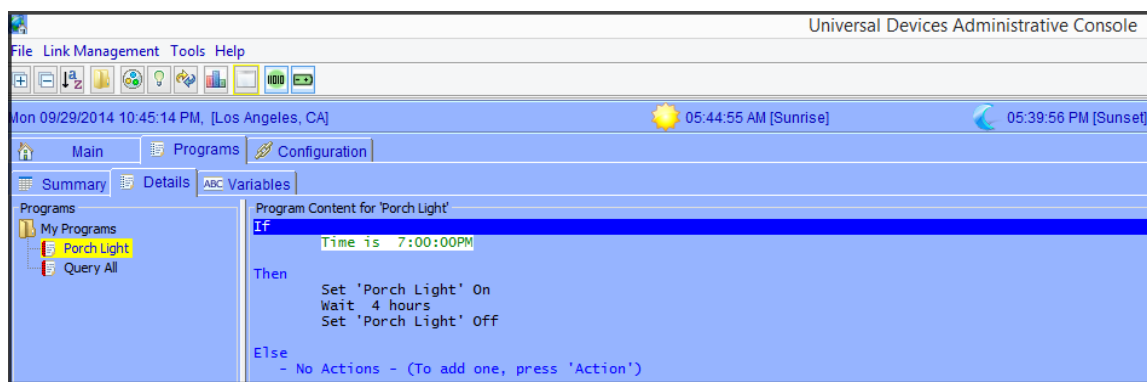


Figure 3C

For additional documentation, please visit <http://wiki.universal-devices.com>

For our Product and Technical Support Page please visit:

<https://www.universal-devices.com/udi-support>

Don't forget to register your unit to receive important enhancements, updates and upgrade information: <http://www.universal-devices.com/register>

ENJOY!

## **FCC Statement**

This device complies with part 15 of the FCC Rules. Operation is subject to the following two conditions: (1) This device may not cause harmful interference, and (2) this device must accept any interference received, including interference that may cause undesired operation.

**IMPORTANT!** Changes or modifications not expressly approved by Universal Devices, Inc. could void the user's authority to operate the equipment.

**NOTE:** This equipment has been tested and found to comply with the limits for a Class B digital device, pursuant to part 15 of the FCC Rules. These limits are designed to provide reasonable protection against harmful interference in a residential installation. This equipment generates, uses and can radiate radio frequency energy and, if not installed and used in accordance with the instructions, may cause harmful interference to radio communications. However, there is no guarantee that interference will not occur in a particular installation. If this equipment does cause harmful interference to radio or television reception, which can be determined by turning the equipment off and on, the user is encouraged to try to correct the interference by one or more of the following measures:

—Increase the separation between the equipment and receiver.

—Connect the equipment into an outlet on a circuit different from that to which the receiver  
connected.

—Consult the dealer or an experienced radio/TV technician for help.

## **IC Statement**

This device complies with Industry Canada licence-exempt RSS standard(s). Operation is subject to the following two conditions: (1) this device may not cause interference, and (2) this device must accept any interference, including interference that may cause undesired operation of the device.

Cet appareil est conforme aux normes RSS exemptes de licence d'Industrie Canada. L'opération est soumise aux deux conditions suivantes: (1) cet appareil ne peut pas causer d'interférences, et (2) cet appareil doit accepter toute interférence, y compris les interférences qui peuvent provoquer un fonctionnement indésirable de l'appareil.

*CAN ICES-3 (B)/NMB-3(B)*