

Changelog			
Revision	Date [YYYY.MM.DD]	Changed by	Change Description
01	2018.09.06	Emil Bonnevie	Document created.

## Internal photos of Smart Sense

### 1. Scope

To document all the internal parts the Smart Sense for FCC approval via pictures

### 2. Pictures of Smart Sense

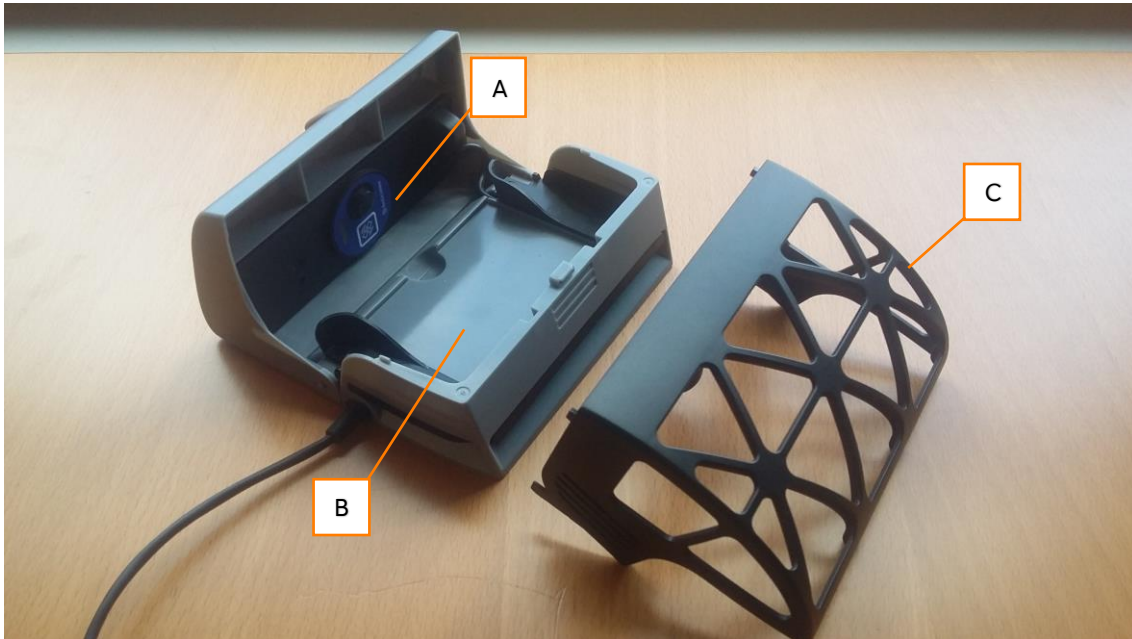


Figure 1: Smart sense mechanical structure. A) Location of main PCB. B) Location of heat PCB. C) Grid frame to be placed in case opening.

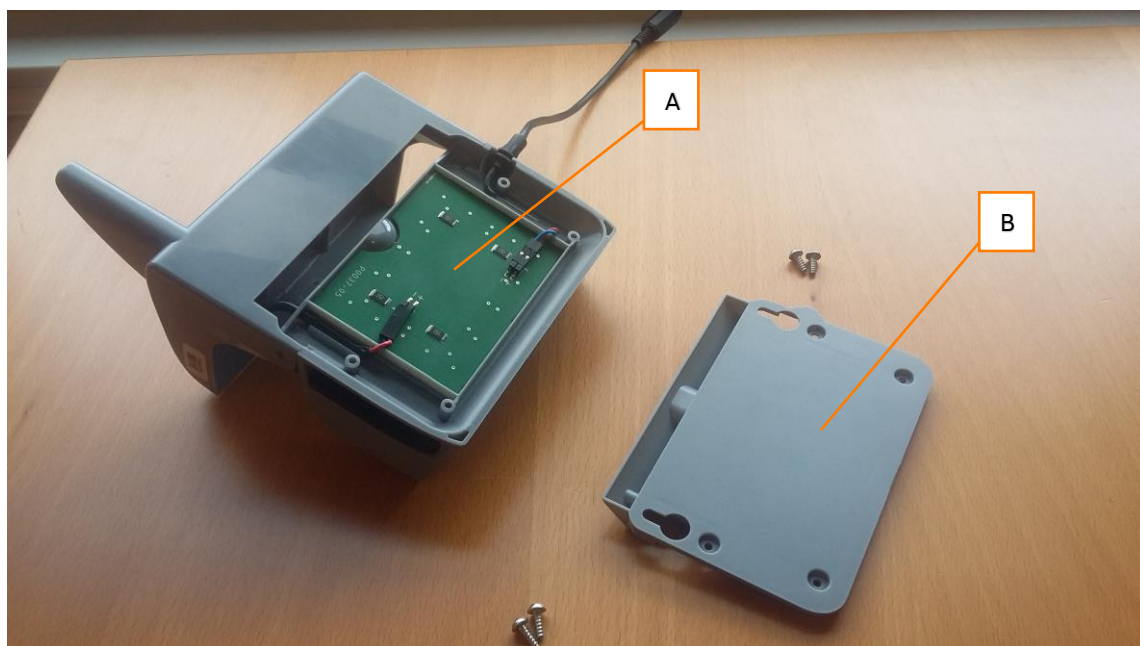


Figure 2: Smart sense from the back. A) Heater PCBA mounted in casing. B) Backplate to be mounted on top of heater PCBA.

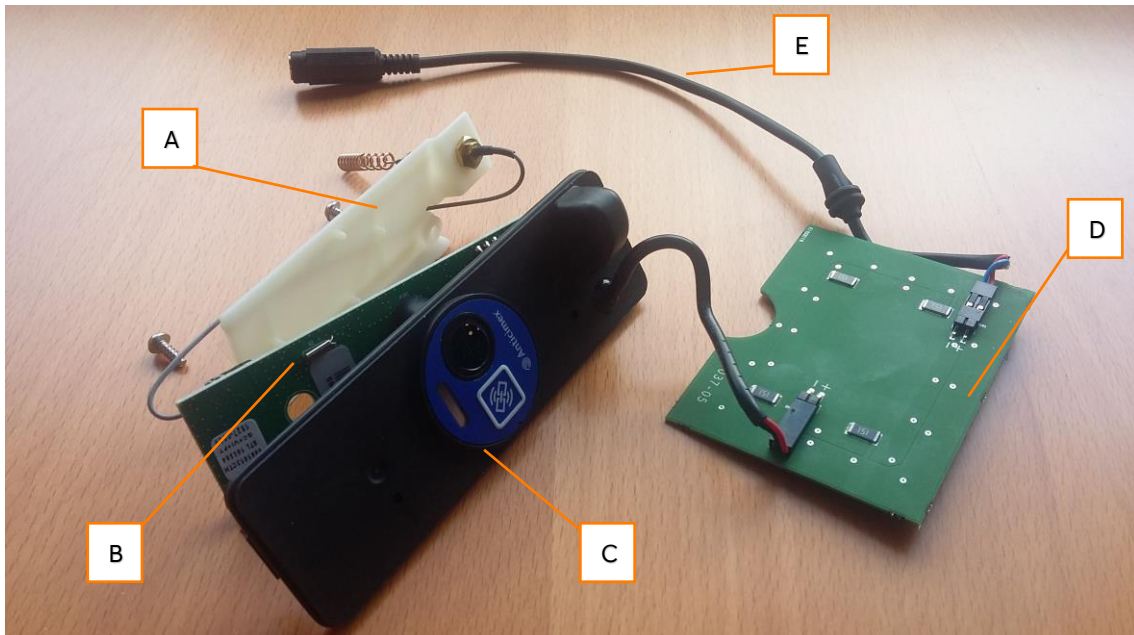


Figure 3: Electrical network. A) Inner panel with antenna fixture. B) The main PCBA. C) The frontward keyboard panel. D) Heater PCBA connects power to main PCBA. E) Power cord to external power supply.

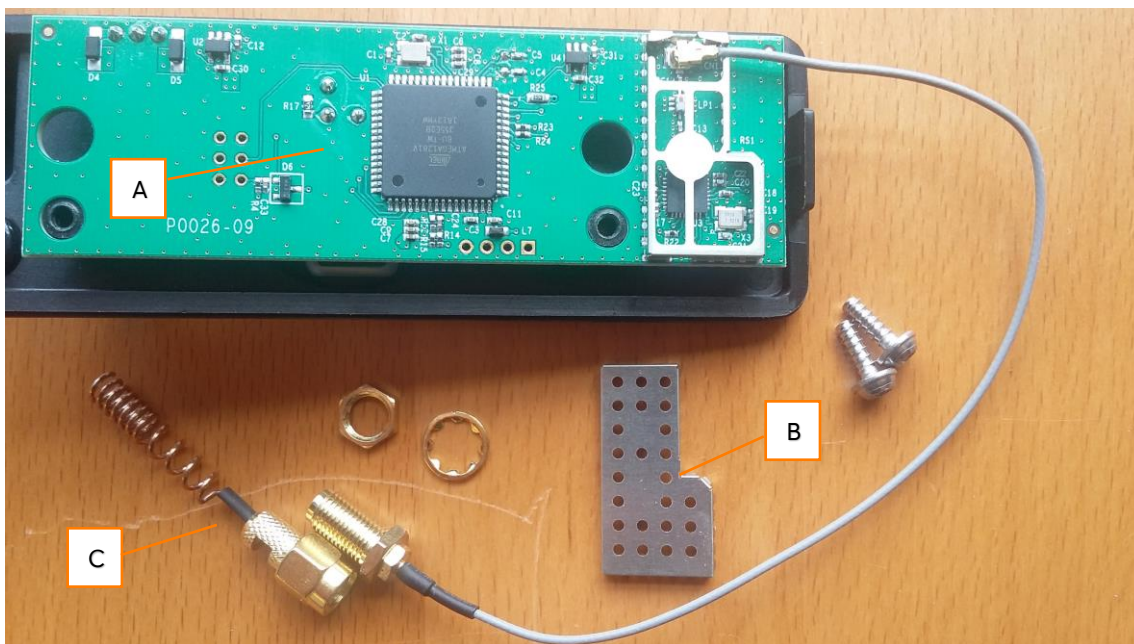


Figure 4: A) Front of main PCBA. B) Shield to be mounted on RF circuit. C) RP-SMA antenna to be connected to cable connector.

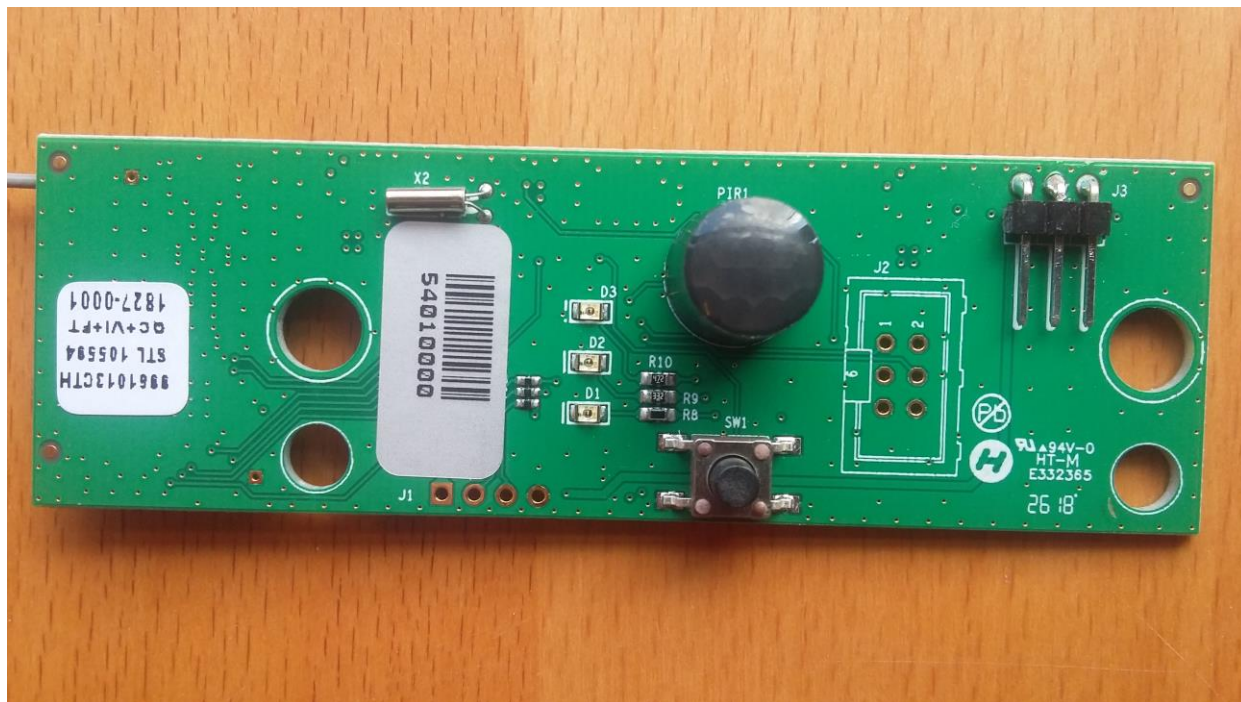


Figure 5: Back side of main PCBA.

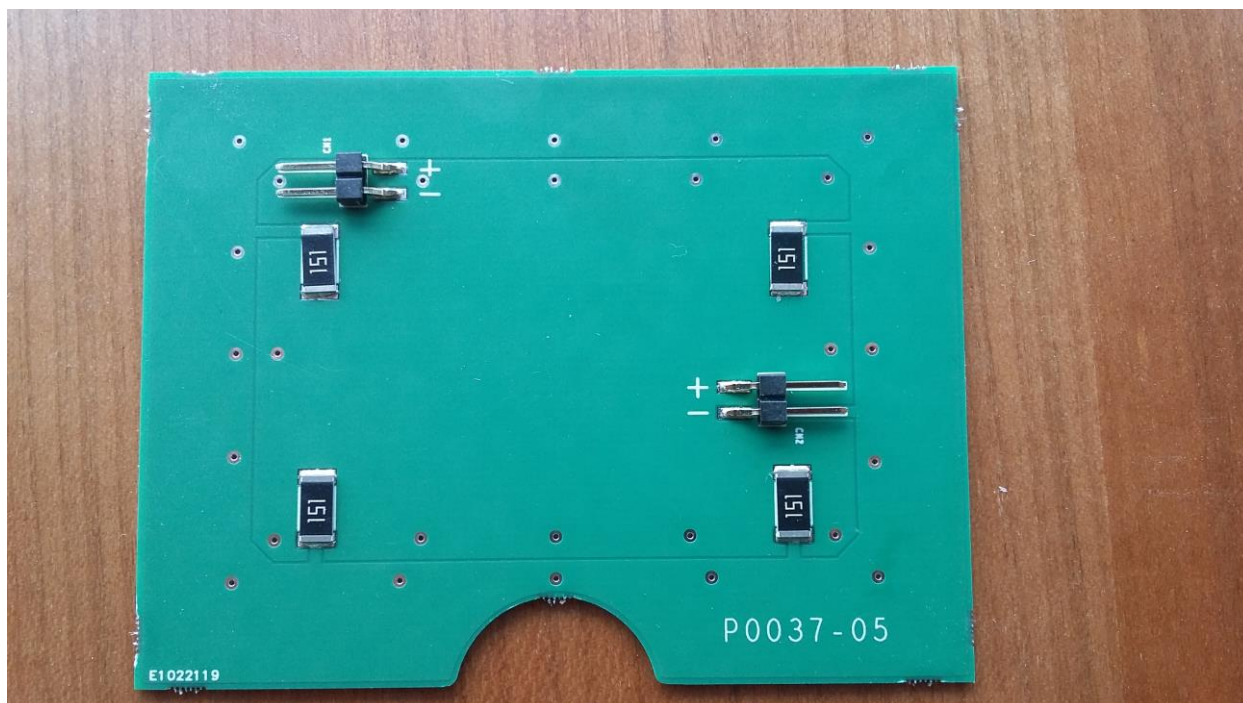
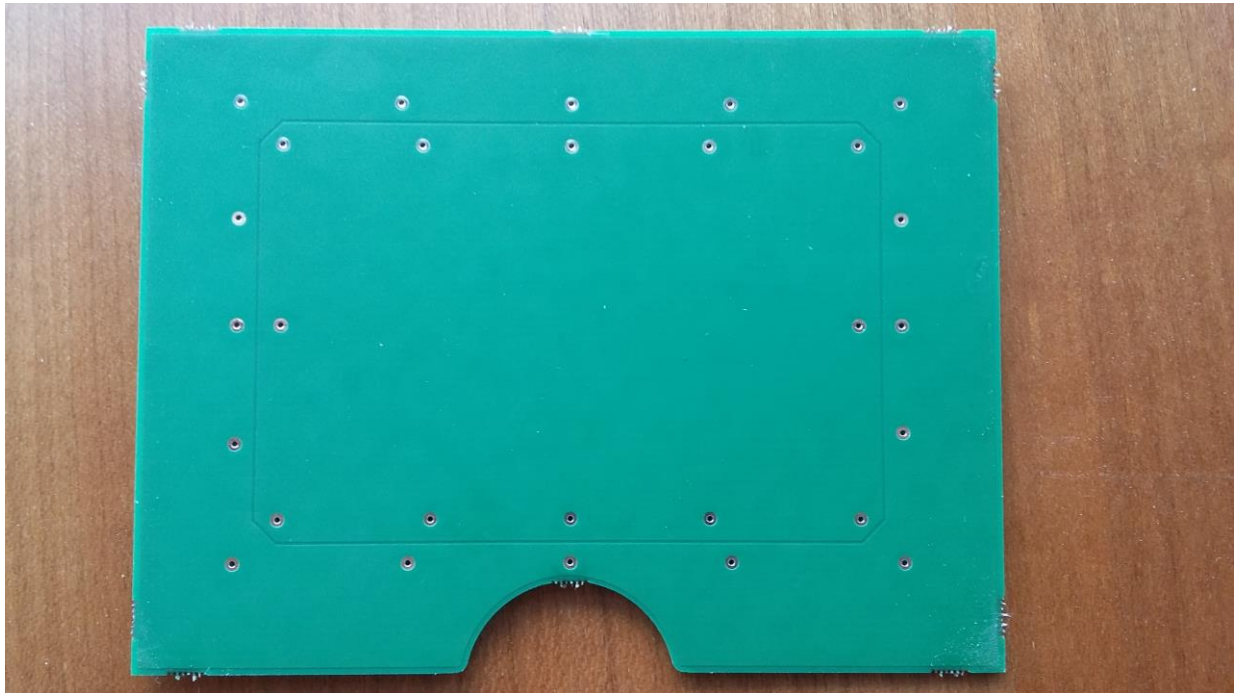


Figure 6: Front of heater PCBA



*Figure 7: Back of heater PCBA*