

Internal photos of Smart Catch

1. Scope

To document all the internal parts the Smart Catch for FCC approval via pictures

2. Pictures of Smart Catch

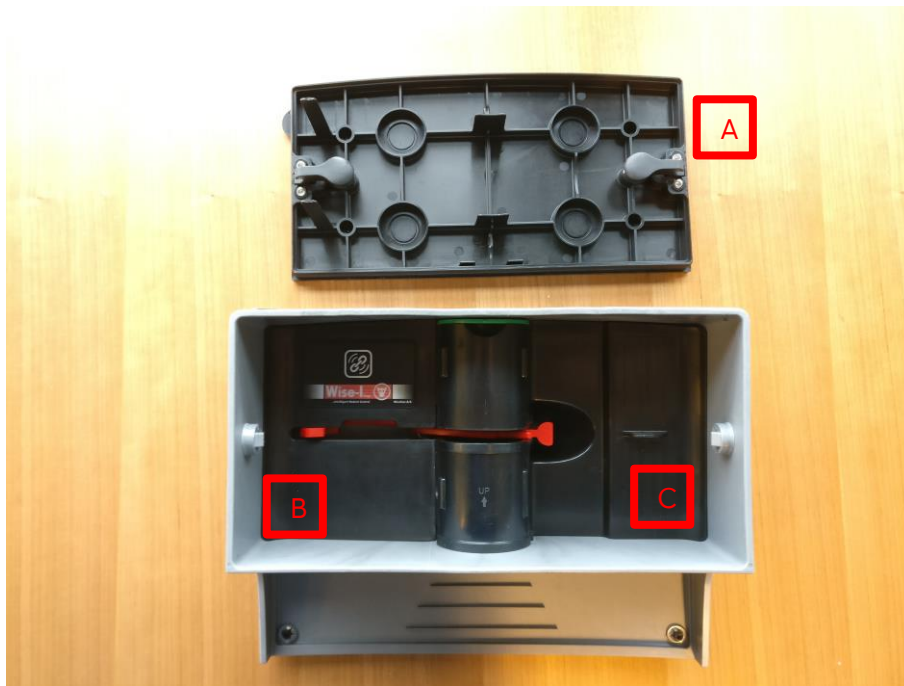


Figure 2: Main parts of Smart Catch. A) shows the back lid, B) main enclosure and C) the battery lid



Figure 1: Internal parts accessible for end user. A) Shows the battery lid, B) is the cover to the lower part of the trap, and C) is the cover and bait compartment for the top part of the trap.



Figure 4: Shows the front side of the main enclosure A) without cover and B) is the cover for the main enclosure front.



Figure 3: Shows Main enclosure with all the user accessible parts removed. A) is the user interface button, B) is the battery holder.

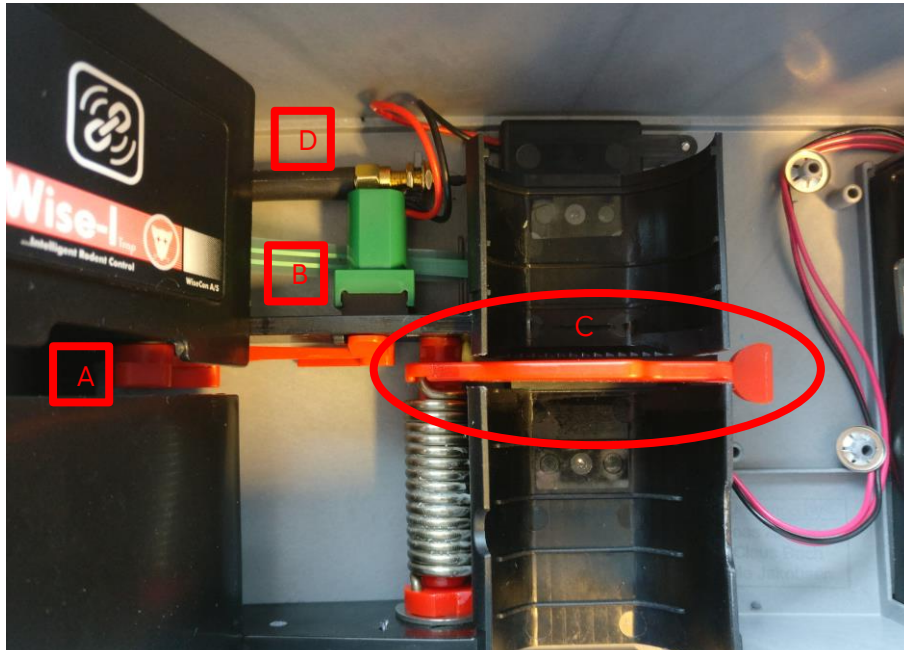


Figure 6: Shows the trap mechanism of the Smart Catch. A) is the trap latch, B) is the release motor, C) is the trap blade. D) shows the placement of the antenna.

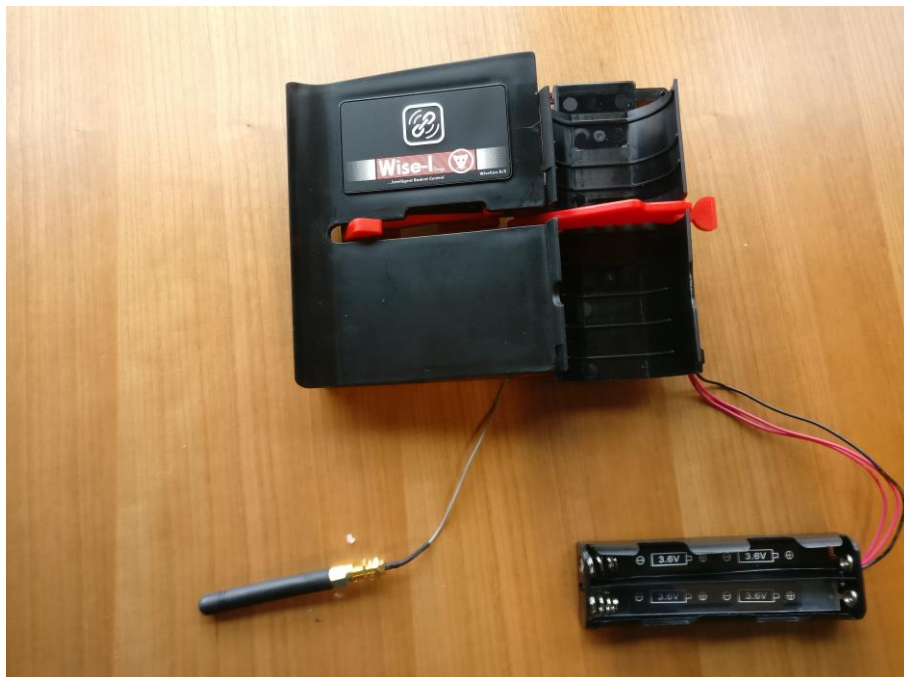


Figure 5: Show the trap subassembly of the Smart Catch

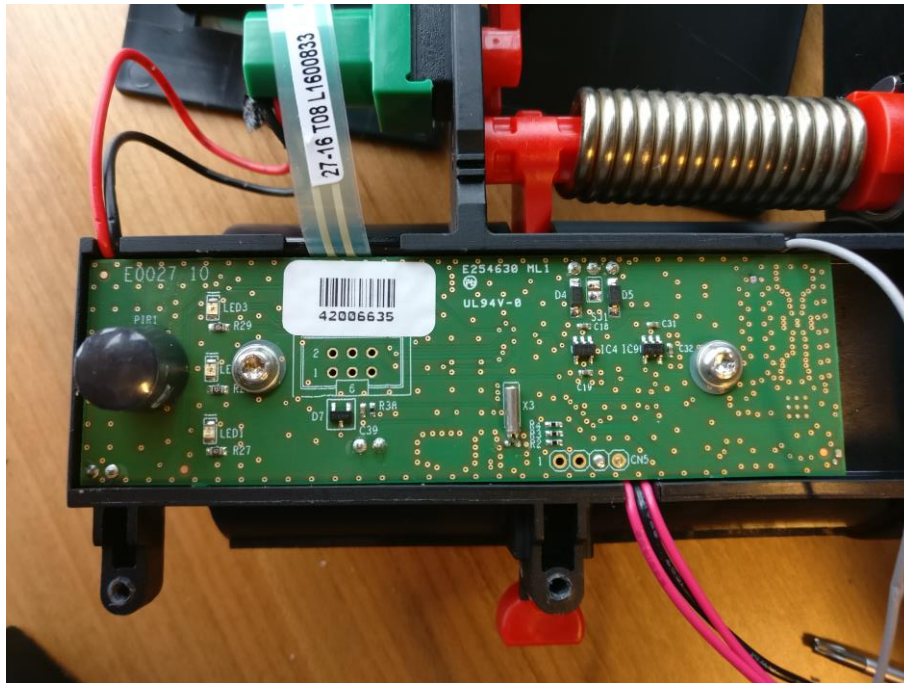


Figure 7: Shows PCB front side, which is placed on the underside of the main trap subassembly.

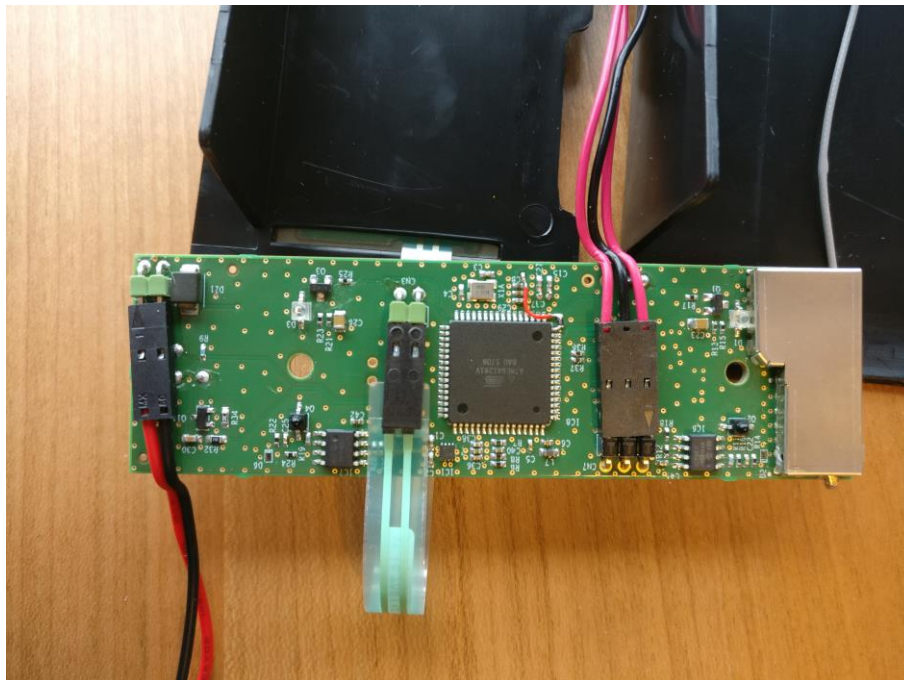


Figure 8: Shows the back side of the PCB

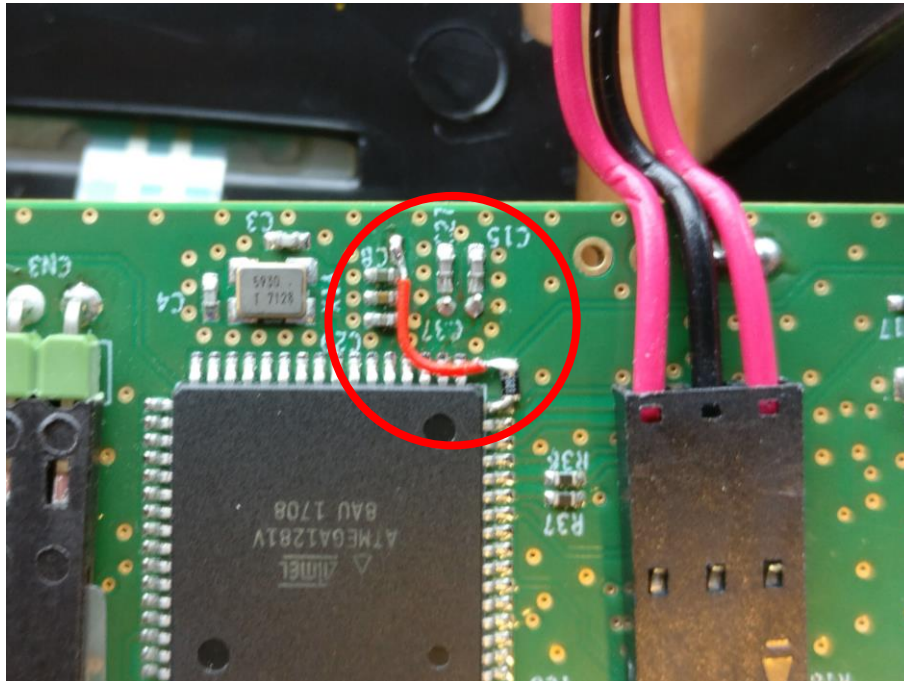


Figure 9: Shows the modification done on the Back side of the PCB. shows the wire added to supply 3.3V to the pull up resistor (510Kohm). See document "13 Smart Catch Schem.pdf" for schematic of modification.