



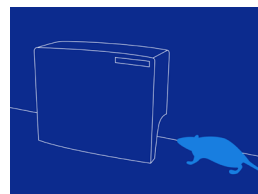
Anticimex Smart Catch

Smart Catch is a single catch unit that detects and deals with rodents above ground. Attractants lure the rodent into the trap, exterminating it efficiently and without any toxics.

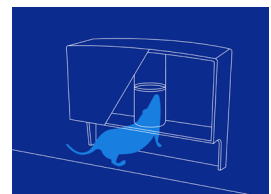
The trap can both catch and exterminate rats and mice quickly, humanely and efficiently; whilst at the same time it can detect and monitor any rodent activity 2 metres from the trap. Smart Catch can be positioned either vertically or horizontally, allowing the trap to easily be placed against walls, under machinery and equipment, on racks and shelves etc.

Anticimex Smart

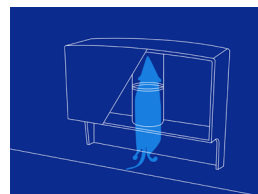
Anticimex Smart is an intelligent system that keeps an eye on things you do not want to see. By constantly monitoring and instantly reacting, it prevents costly infestations in an environmentally-friendly way. Add the services traditionally provided by us, and you will get a solution that gives you the best of two worlds – automation and expertise.



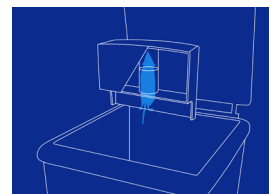
1 – Attractants lure the rodent into the catch.



2 – The rodent is lured into place.



3 – Quick, humane and efficient extermination.



4 – We deposit the rodent into a bin.



Smart Catch

Controls	Electronic wireless control with 920 MHz. Data transmission to Smart Connect.
Installation	Can be placed both outside and inside buildings, for example, along the buildings, warehouses, ceilings, hallways and under shelves or on shelves, cabinets and kitchens. The trap can be placed horizontally or vertically.
Power supply	4 pcs. lithium 3,6V AA batteries
Battery capacity	Minimum 12 months.
Plastic material	PP, PA
IP classification	IP 44
Dimensions	L 259 / W 106 / H 203 mm
Weight	1,1 kg
Equipment	Drill bit required (concrete): Ø 5 mm.
Article no.	300 301
Accessories	200 940 Key 300 101 Smart Connect 4 pcs. lithium 3,6V AA batteries Bait Installation equipment

See FCC compliance statement and manuals at One.anticimex.com