

Internal photos of Smart Box Link

1. Scope

To document all the internal parts the Smart Box Link for FCC approval via pictures.

2. Pictures of Smart Box Link



Figure 1: Main parts of the Smart Box Link. A) Shows the top lid B) The top of the bucket/lid and C) The control panel.



Figure 2: Internal parts accessible for the end user. A) Shows the bait box. B) Is the bucket. C) Is the lid for the bucket.

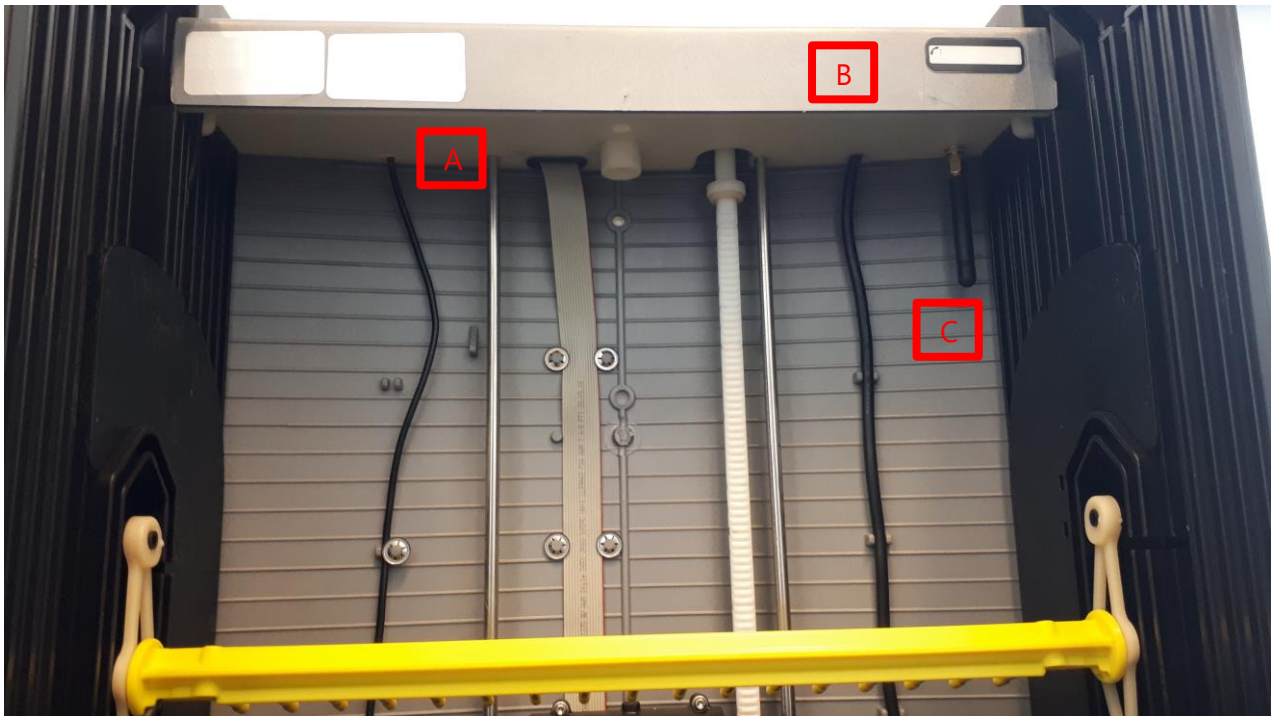


Figure 3: Front side removed. A) Top of the elevator section. B) Front side of the control panel. C) Antenna.

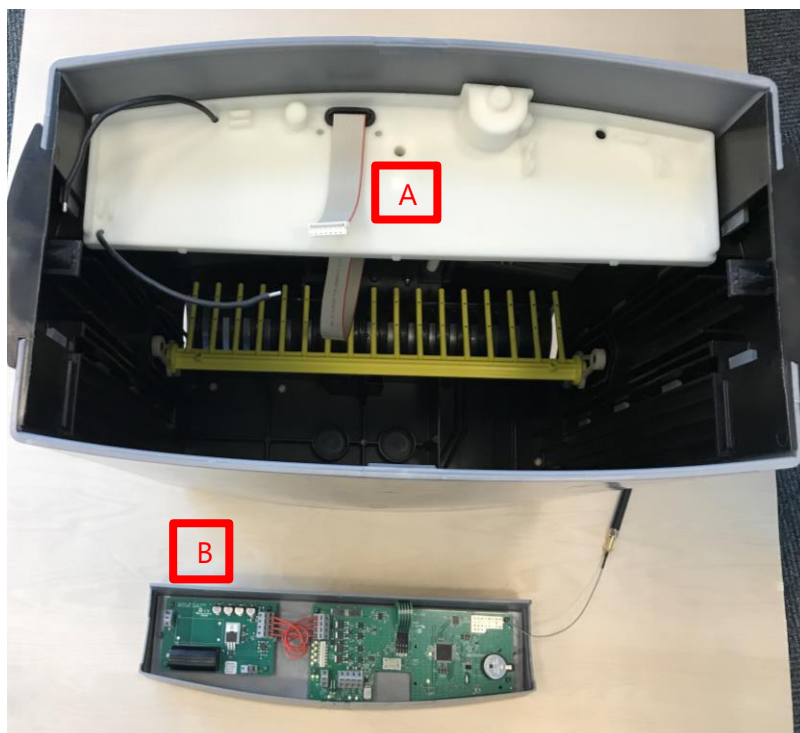


Figure 4: With the control panel removed. A) Top of the elevator section. B) Bottom side of the control panel.



Figure 5: Inside of control panel. A) Is the control PCB. B) Is the separated high voltage generating PCB.

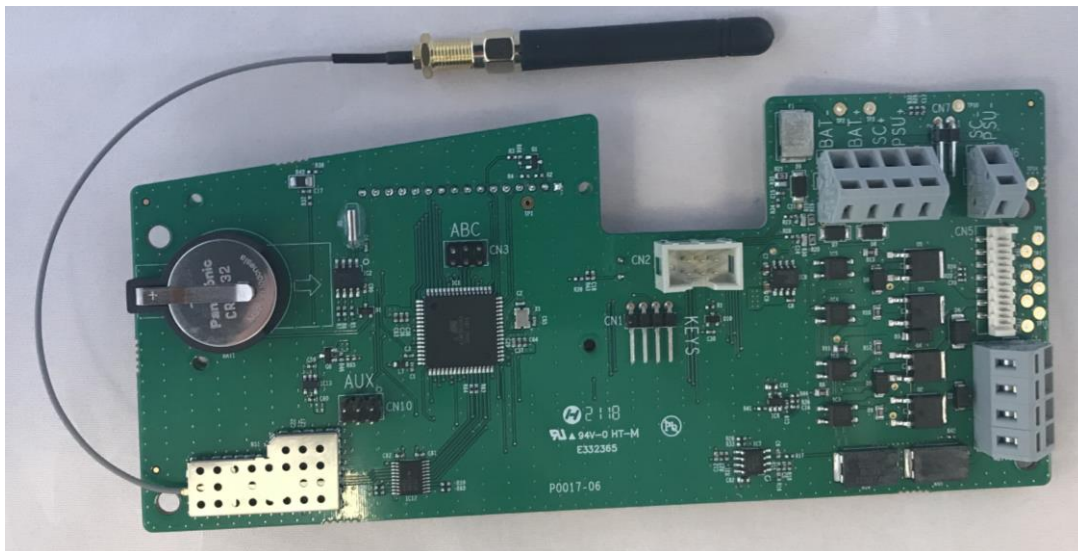


Figure 7: Shows the front side of the control PCBA.

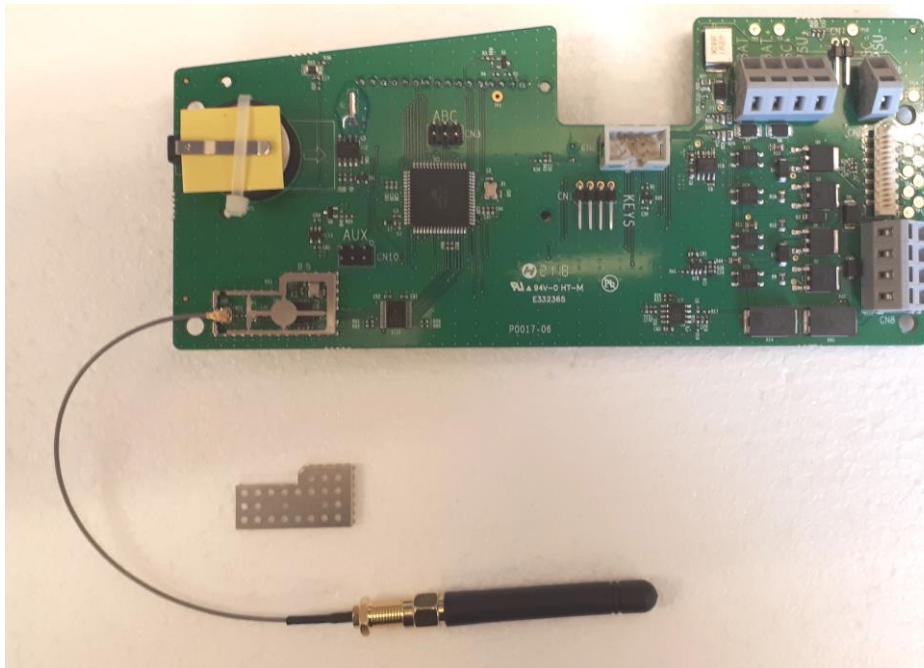


Figure 8: Shows the front side of the control PCBA, without EMI shield top.

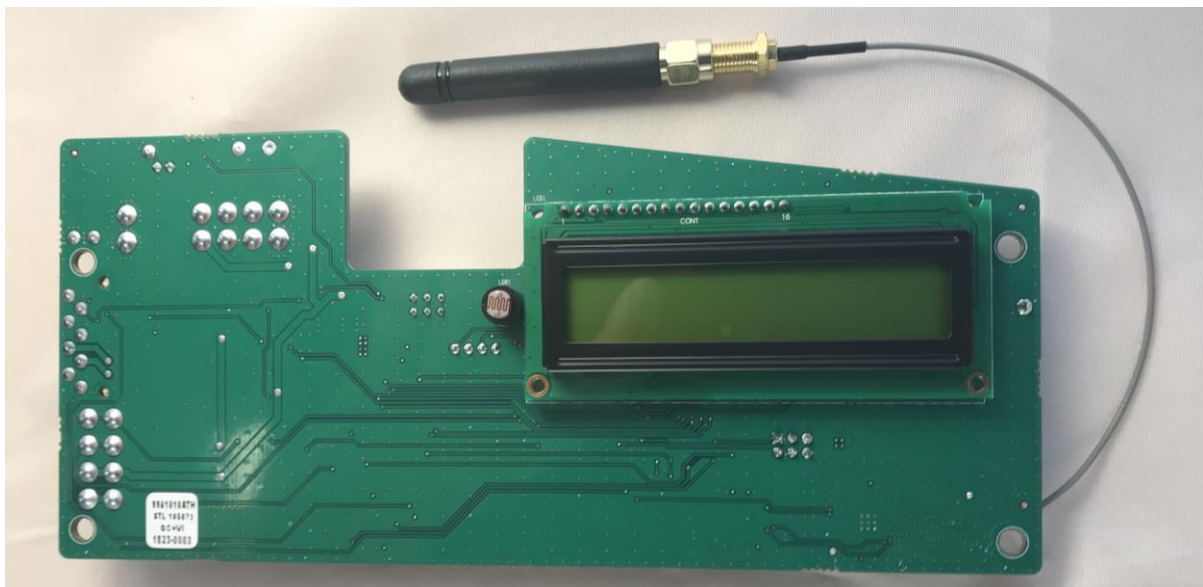


Figure 9: Shows the back side of the control PCBA.

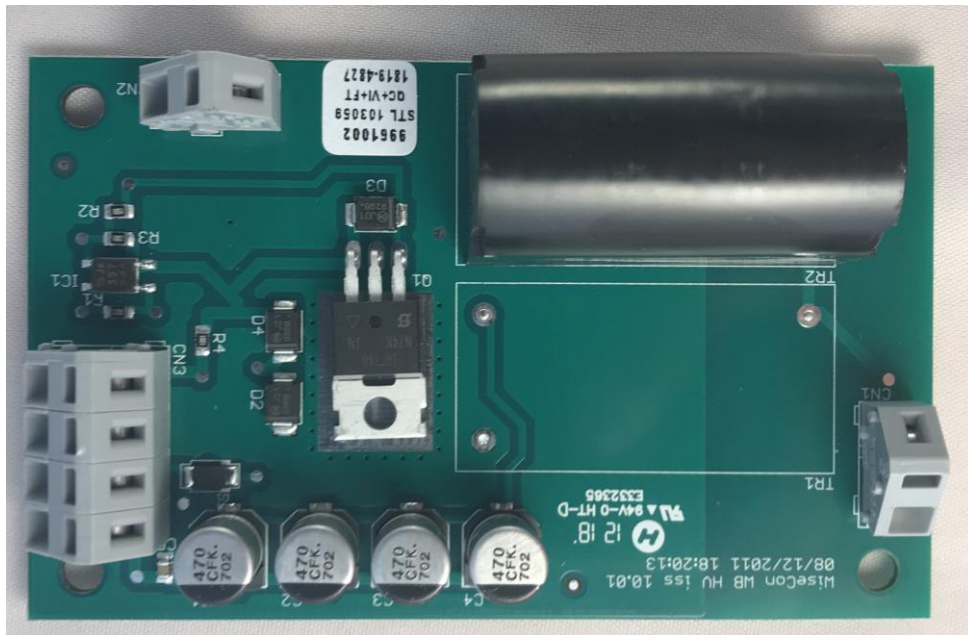


Figure 10: Shows the front side of the high voltage PCBA.

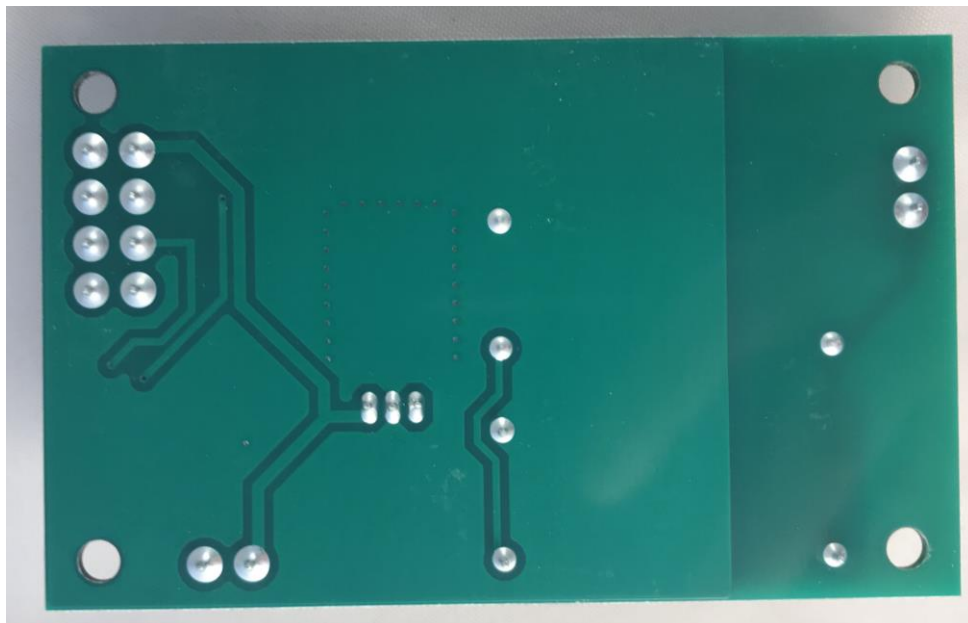


Figure 11: Shows the backside of the high voltage PCBA.

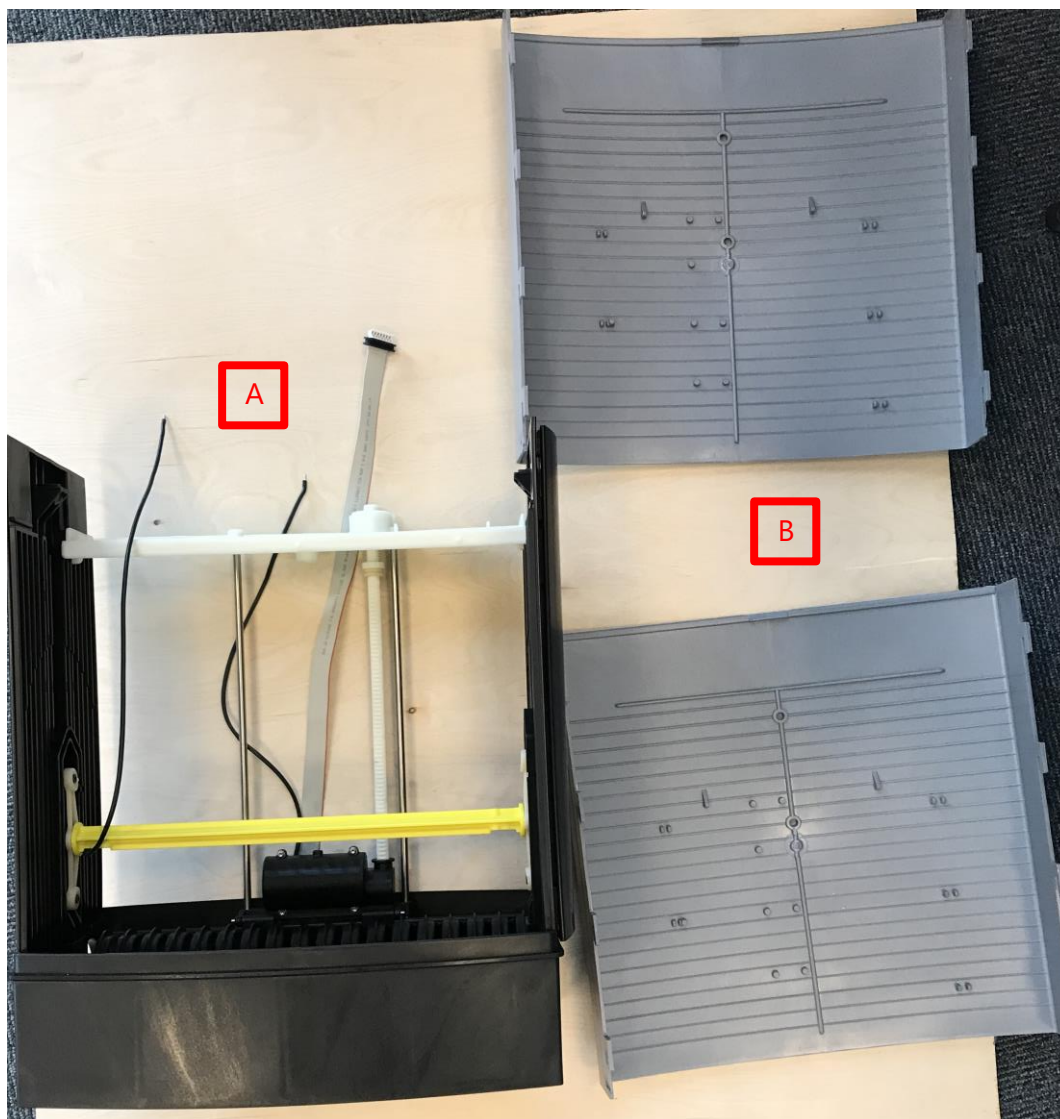


Figure 12: Outer box elements seen from the front. A) Outer box enclosure. B) Front and back panel for the box.

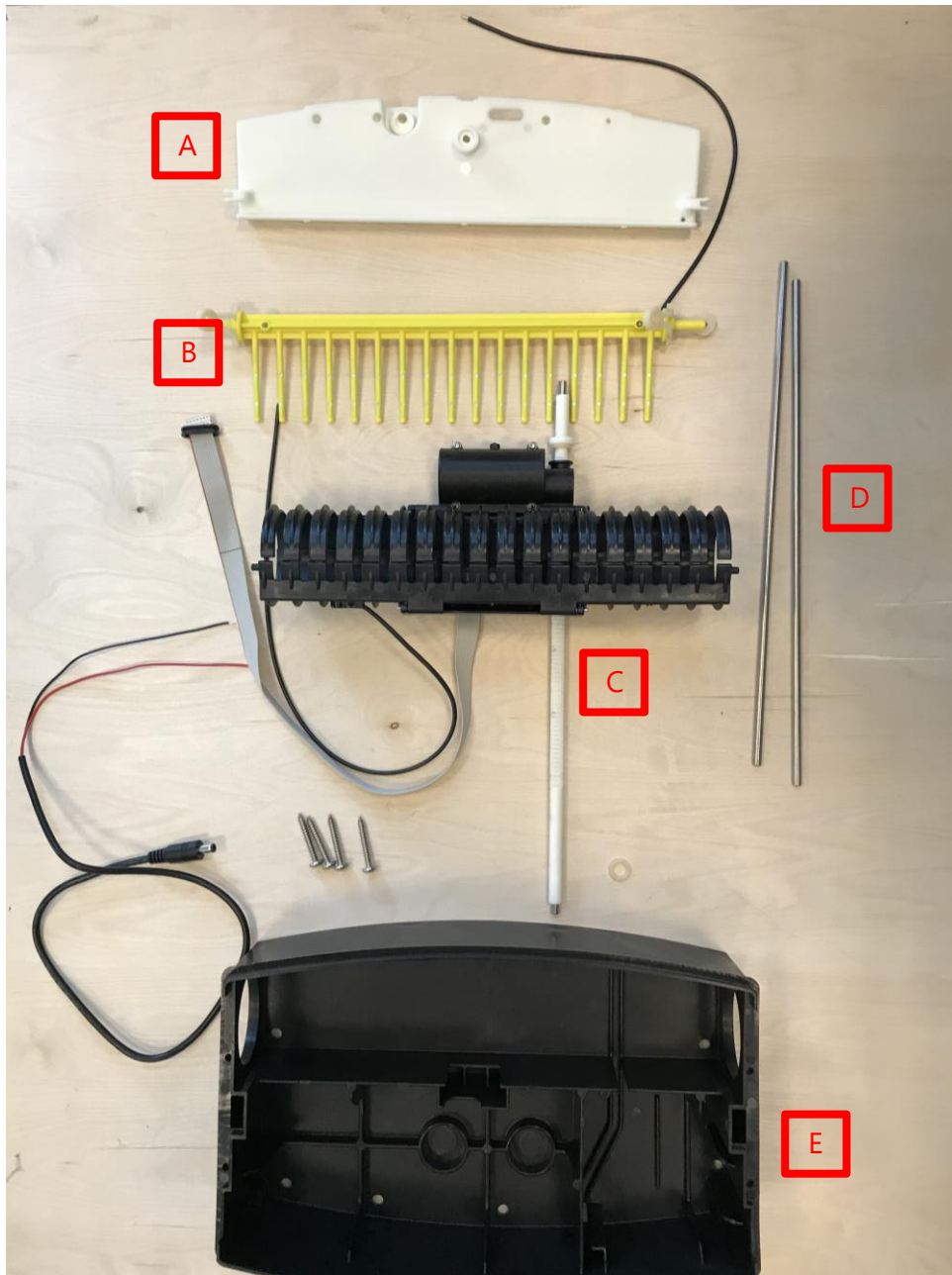


Figure 13: Box disassembled. A) The top of the elevator. B) Rake for applying high voltage through elevator tunnel. C) Elevator tunnel seen from the front, mounted on shaft with motor. D) Elevator guide poles. E) Bottom of box seen from above.

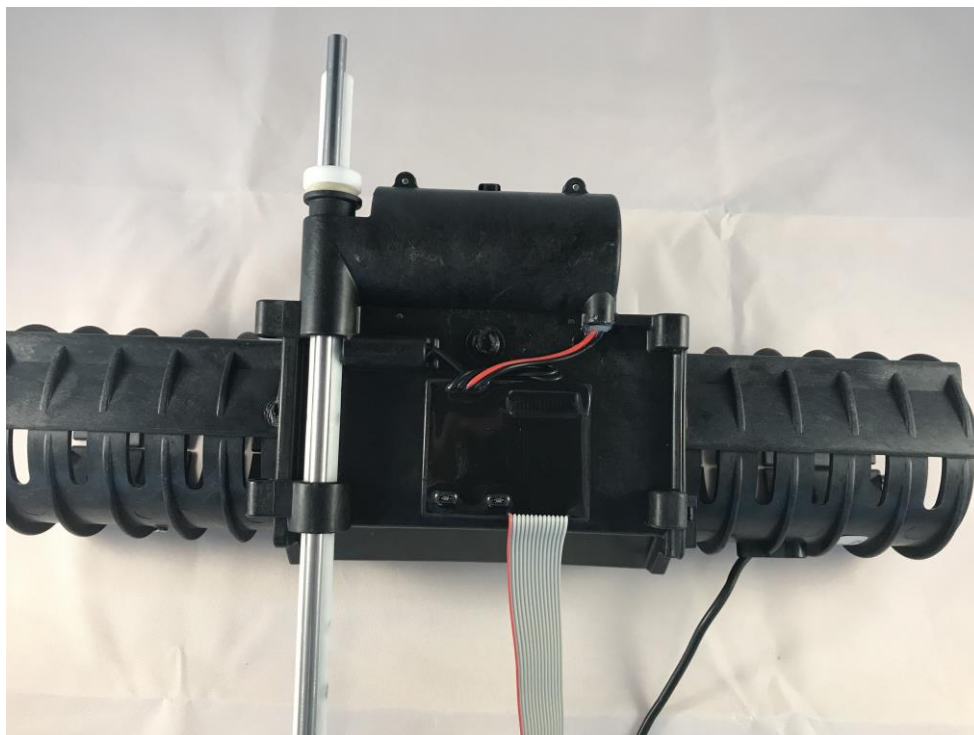


Figure 14: Elevator tunnel as seen from the back.



Figure 15: Elevator tunnel seen from the front in open display.

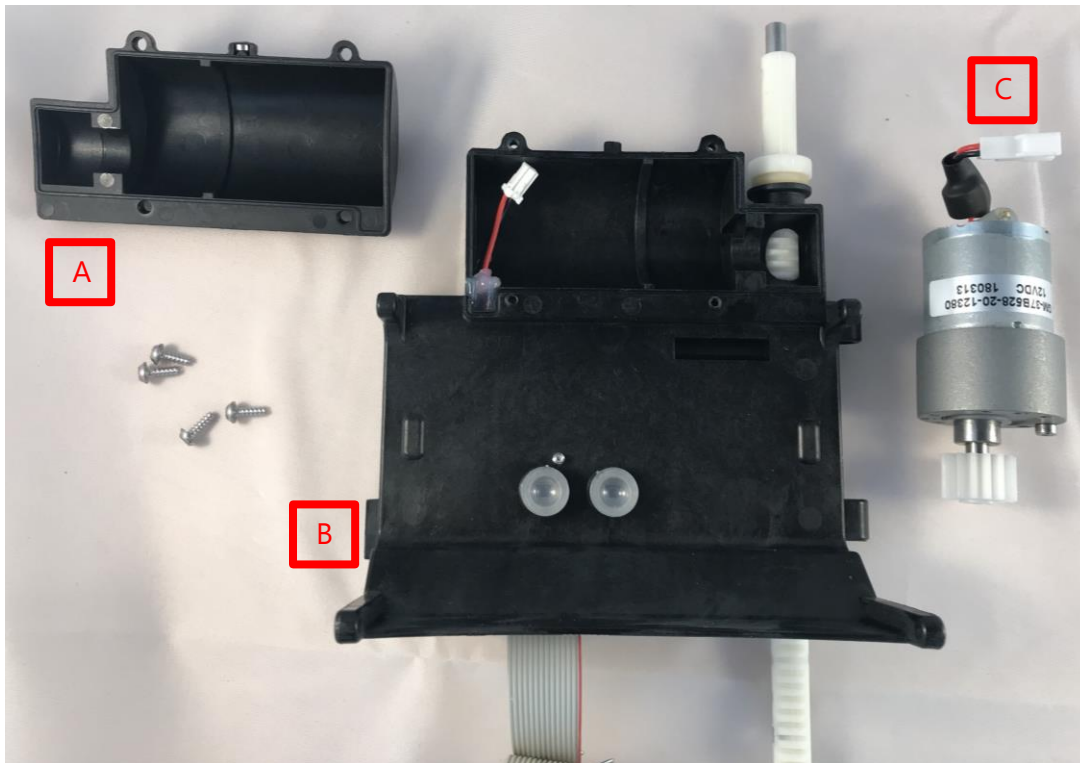


Figure 16: Elevator without tunnel. A) Half of motor enclosure. B) Elevator frame seen from the front. C) Elevator motor.



Figure 17: Elevator seen from the back before elevator PCB is enclosed in Iso-pur k 760 epoxy.

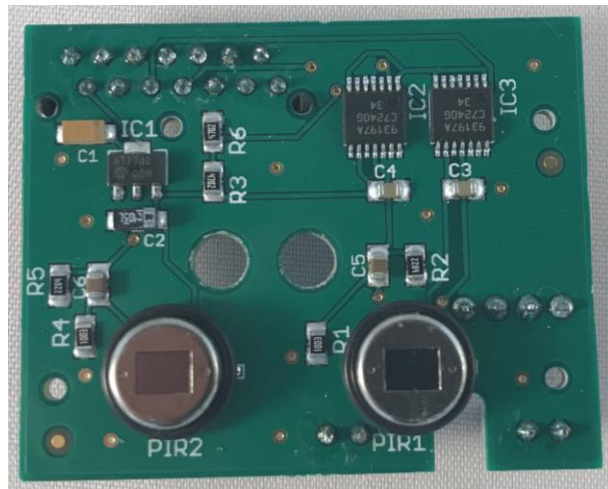


Figure 18: Elevator PCBA seen from the front with 2 PIR sensors.

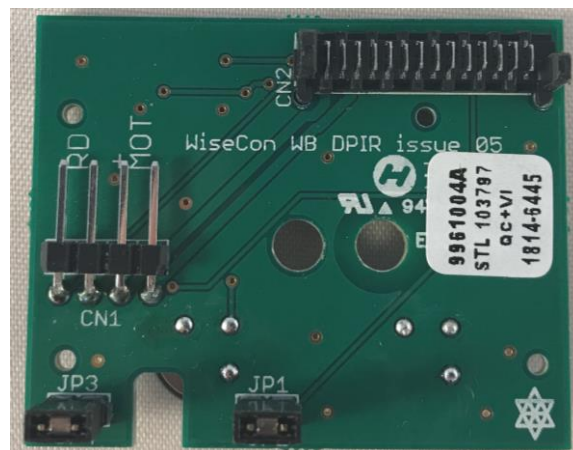


Figure 19: Elevator PCBA seen from the back.