

Quick Setup Guide

Qball Controls

Once the Windscreen is off, you'll see:

Power Button & Status Indicator

A

Volume - / +

B

Microphone

C

Charging Port

D

Mode Button

E

On the front of the Receiver, you'll find:

Mute Indicator

F

Mute Button

G

Power Button

H

Status Indicator

I

Windscreen

Grab, twist, and pull the screen to reveal the Qball Controls.

See next pages for more info.

Receiver

On the back, you'll find ports for power, and lines in/out.

Qball's Awesome ^{New!} Features



Quiet Toss

Qball knows when to be quiet.

The Qball is a smart microphone that knows when it is being tossed and automatically mutes itself to avoid any unwanted noise.



Toggle on or off by quickly pressing the mode button.



Auto Sleep

Save battery life for more fun times ahead.

To save battery life the Qball automatically goes into standby mode if no movement is sensed for 15 minutes. To wake it back up just give it a shake.



Toggle on or off by pressing the mode button for two seconds.



Hush Mode

Qball knows when to stay quiet.

Done using the Qball for a bit? Simply flip the Qball upside down onto the Windscreen and it will automatically mute itself.



Toggle on or off by quickly pressing the mode button.



Auto Off

Forget to turn off the Qball? No problem.

After two hours of inactivity, the Qball will automatically turn itself off. So, if you forget to manually power off—no worries. Odds are, there's more fun to be had on that charge.

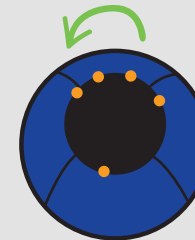


Toggle on or off by pressing the mode button for two seconds.



Before you Begin...

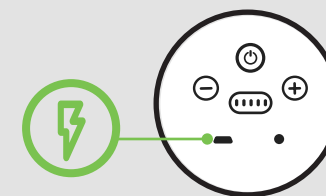
It's important to charge your Qball fully before the fun starts. Here's how to do it!



1. Access Qball Controls

STEP 1: Firmly grasp the windscreen (as indicated by the orange dots). Then...

STEP 2: Twist counter-clockwise 1/8th of a turn, and pull it out to reveal the Microphone and Controls.



2. Charge before first use

Plug the Qball into the charging port using the included MicroUSB cable. Charge until the Red charging LED turns Green before first use.

How to Setup

Just a few quick steps, and you'll be Qballin' in no time!

Step 1 of 2

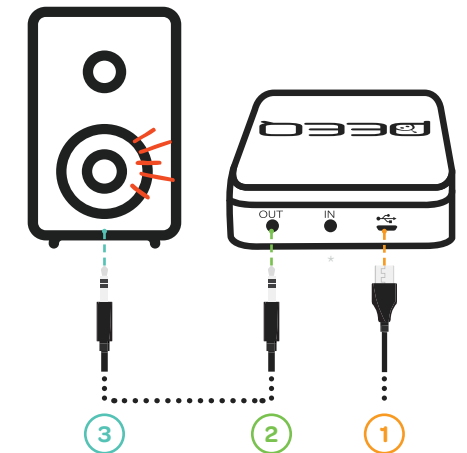
STEP 1'S OBJECTIVE:

Setup the Receiver—which is how Qball "talks" to your speakers.

STEP 1.1: Plug the Receiver into the wall with the provided MicroUSB power cable, and it will turn on automatically.

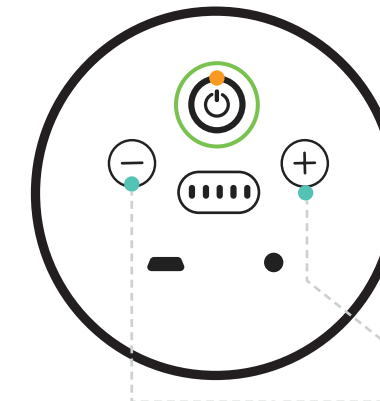
STEP 1.2: Connect one end of the provided Audio Cable into the OUT port on the back of the Receiver.

STEP 1.3: Connect the other end of the Audio Cable into the AUX IN port on your speaker.



*For instructions on when to use the LINE IN port, check out buyqball.com/setup.

Step 2 of 2



STEP 2'S OBJECTIVE:

Power on the Qball, Pair, then Play!

STEP 2.1: Once your Qball is charged, turn it on by pressing the power button.

STEP 2.2: The LED indicator light around the power button will change from flashing Blue to solid Blue, indicating a connection has been made.

STEP 2.3: You can then adjust the volume using the + and - buttons. Replace the Windscreen, and you're all set!

Need Extra Help With Setup?

Don't worry one bit— we're here to help!

If you don't see instructions for your unique tech setup, visit us online at www.buyqball.com/setup.

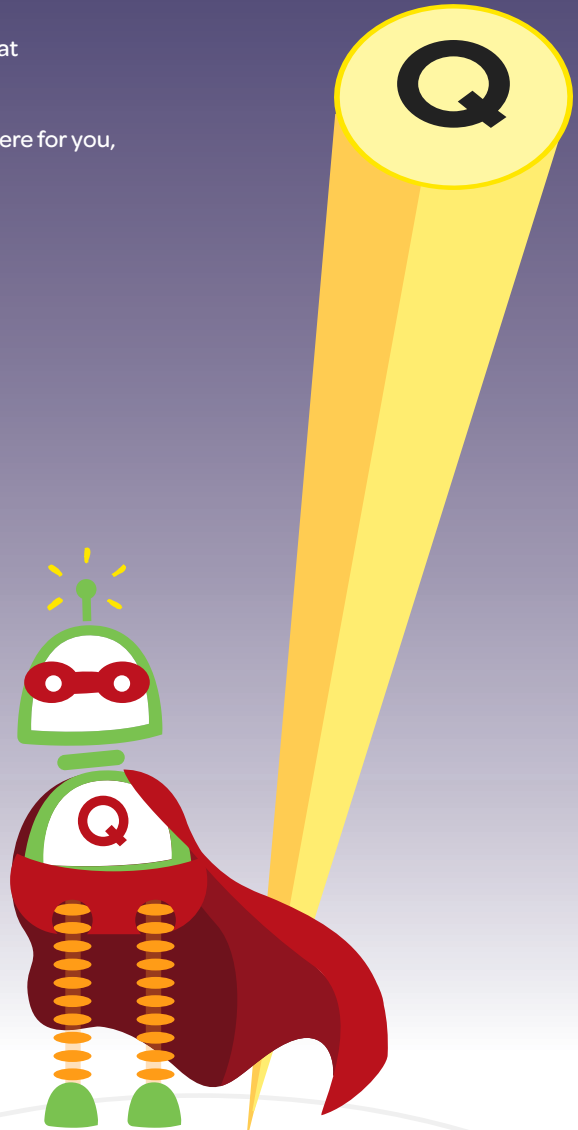
Here, you can access our Knowledge Base or contact Support. We're here for you, every step of the way!

Are you a Teacher? Join us in our Online Teachers Lounge!

The Teachers Lounge is a magical place, where you'll find the world's funnest teachers and oodles of awesome ways to use Qball in the classroom.

www.buyqball.com/teacherslounge

This device complies with part 15 of the FCC Rules. Operation is subject to the following two conditions: (1) This device may not cause harmful interference, and (2) this device must accept any interference received, including interference that may cause undesired operation.



FCC Warning Statement Changes or modifications not expressly approved by the party responsible for compliance could void the user's authority to operate the equipment. This equipment has been tested and found to comply with the limits for a Class B digital device, pursuant to Part 15 of the FCC Rules. These limits are designed to provide reasonable protection against harmful interference in a residential installation. This equipment generates uses and can radiate radio frequency energy and, if not installed and used in accordance with the instructions, may cause harmful interference to radio communications. However, there is no guarantee that interference will not occur in a particular installation. If this equipment does cause harmful interference to radio or television reception, which can be determined by turning the equipment off and on, the user is encouraged to try to correct the interference by one or more of the following measures:

- Reorient or relocate the receiving antenna.
- Increase the separation between the equipment and receiver.
- Connect the equipment into an outlet on a circuit different from that to which the receiver is connected.
- Consult the dealer or an experienced radio/TV technician for help.

This device complies with part 15 of the FCC Rules. Operation is subject to the following two conditions: (1) This device may not cause harmful interference, and (2) this device must accept any interference received, including interference that may cause undesired operation.