

Serafim R1+

Serafim Racing Wheel for Smartphones,
Consoles, and PC

User Manual



Contents

Disclaimer.....	2
Warranty.....	3
Package Contents	4
Component Names	5
How to Use	6
Product Specification	12
Key Mapping.....	14
Safety Notes	17

Disclaimer

Copyright©

© Serafim Tech. Inc. All rights reserved.

No part of this manual, including the products and software described in it, may be reproduced, transmitted, transcribed, stored in a retrieval system, or any without the express written permission of Serafim Tech. Inc.

For any future information please visit Serafim official website:

<http://www.serafim-tech.com> if however you encounter any problems we would be glad to answer all your concerns at sales@serafim-tech.com.

Warranty

This product has one year Serafim warranty service, only in these following case should not be content into Serafim's warranty:

1. The product is repaired, modified or altered, unless such repair, modification or alteration is authorized in writing by Serafim.
2. In all cases the commencement date for the period is one year since the actual day of purchase, as reflected on the authorized reseller's or distributor's invoice / receipt provided to you.

Package Contents

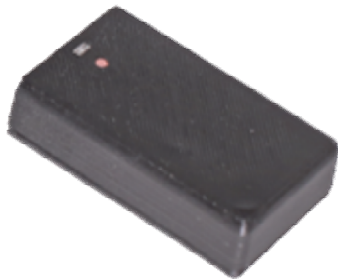
1



2



3



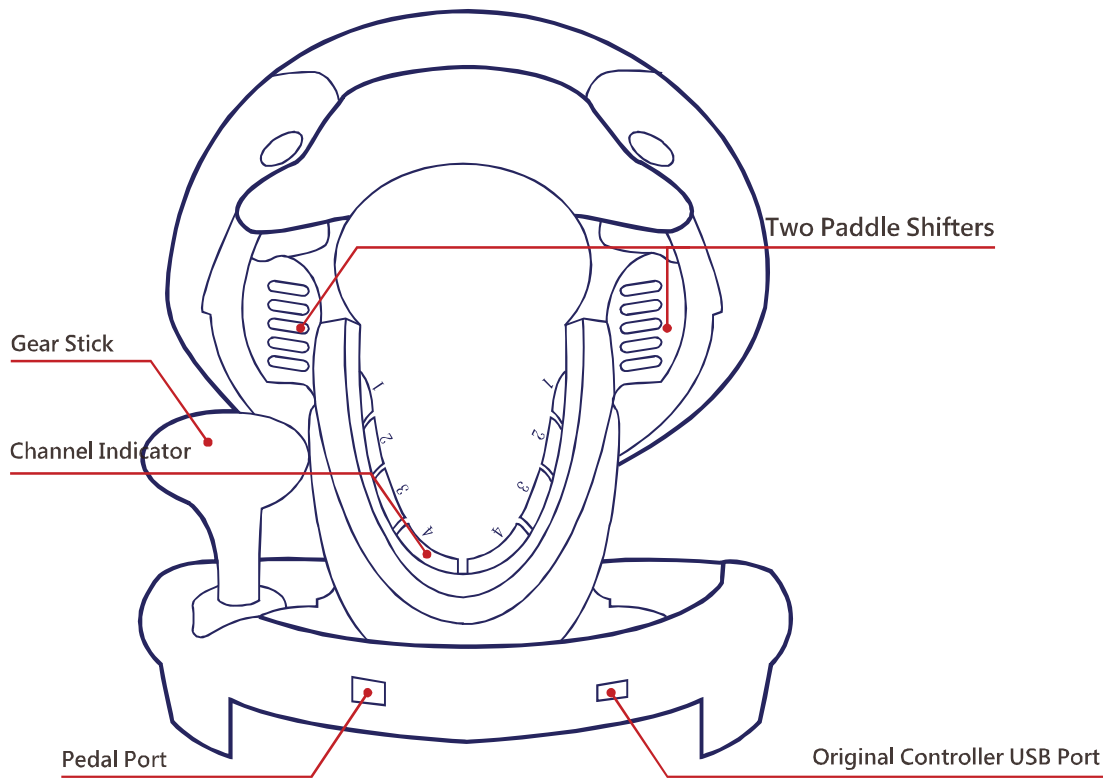
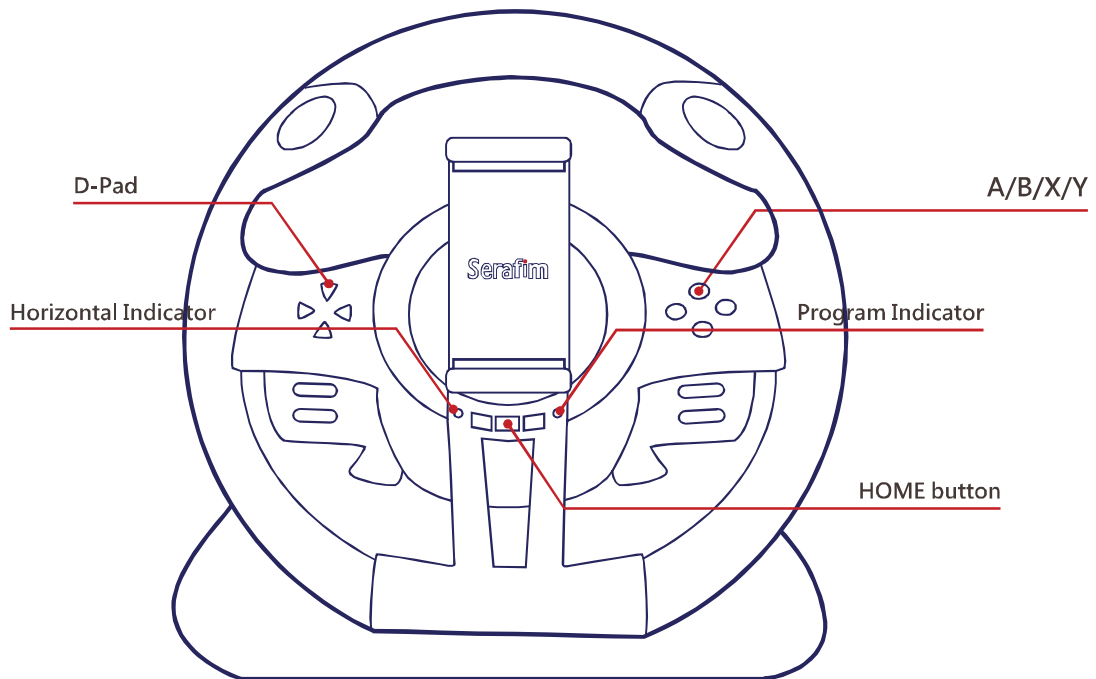
4



1. Racing wheel
2. Racing pedals
3. Bluetooth module
4. Quick setup guide

*** These pictures are for reference only**

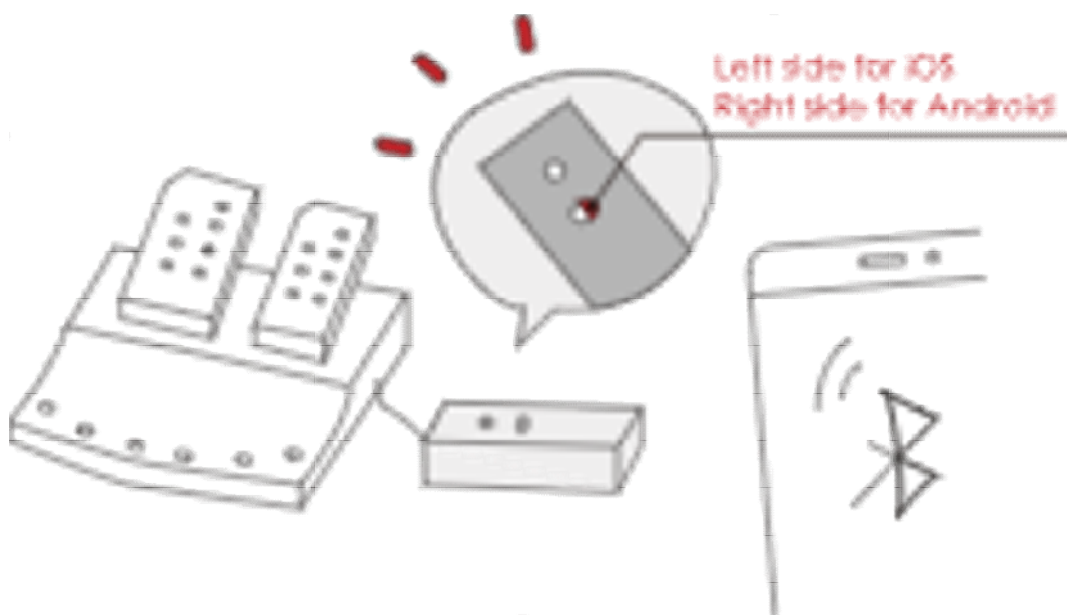
Component Names



How to Use

Instruction for using the product

1. Firstly, switch between Android and iOS mode on a Bluetooth module. Connect Bluetooth module to pedals. Pair the device with your phone via Bluetooth.



2. When the connection is successful, and the blinking speed of indicator will be slower than previously was.

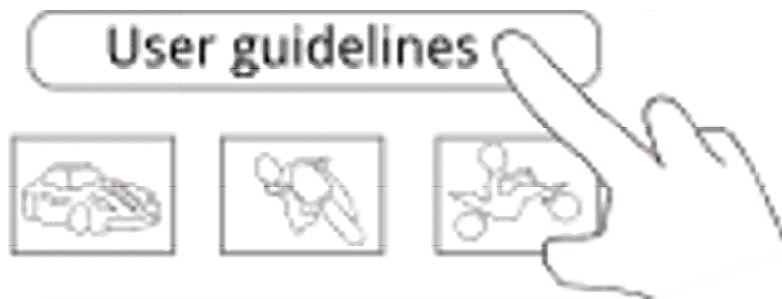


Open "Serafim Play" app, and the app will automatically pair with Serafim R1+ via Bluetooth.

3. You can get a “Serafim Play” app for free on App Store or Google Play.



4. Open “Serafim Play” app, and learn about compatible games and user guidelines

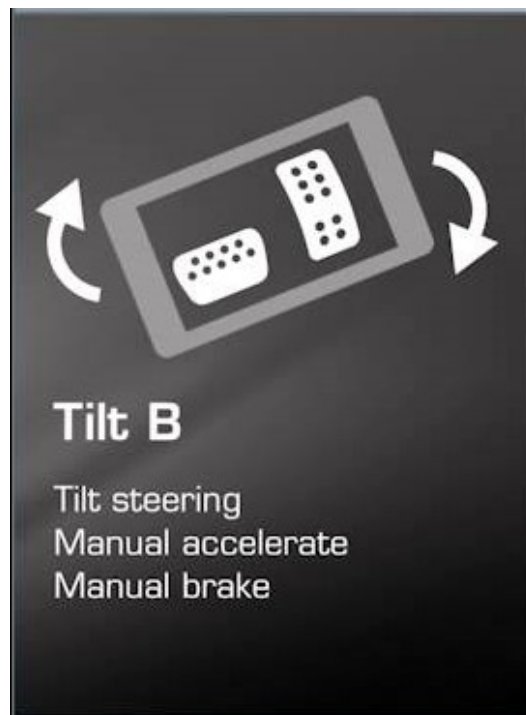


Please keep the “Serafim Play” app running in the background while playing a racing game.

5. Change driving setting in game menu

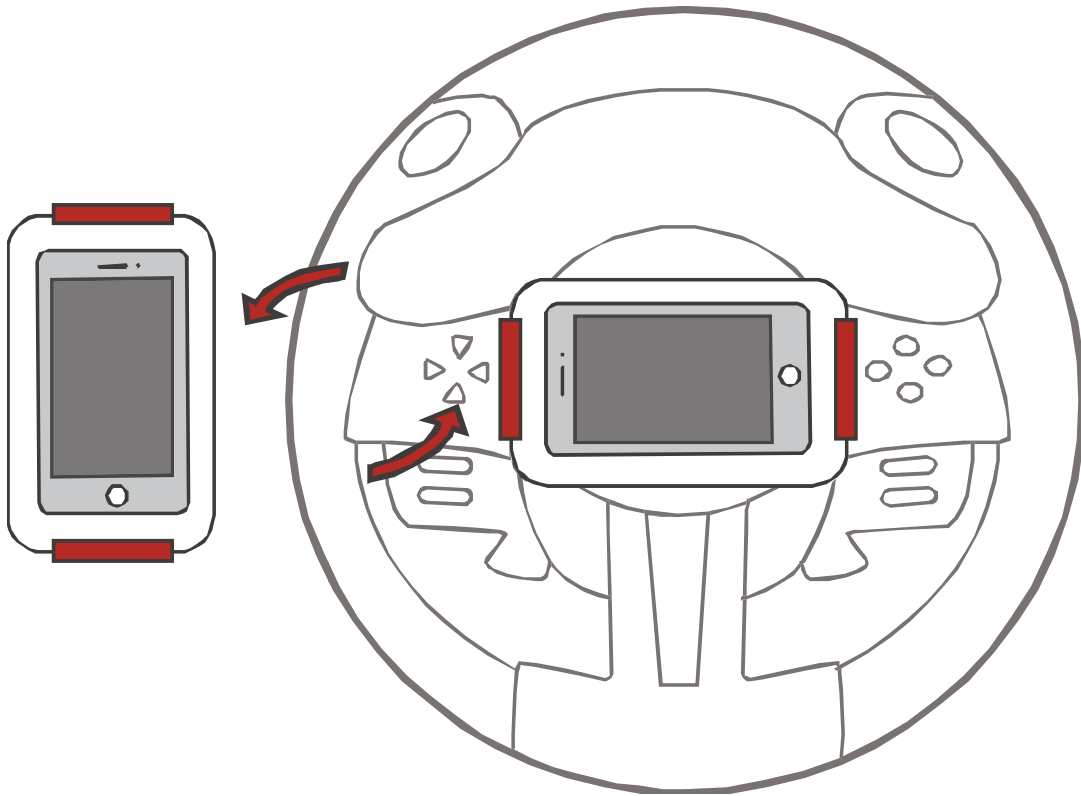


Select tilt steering, manual accelerate, and manual brake

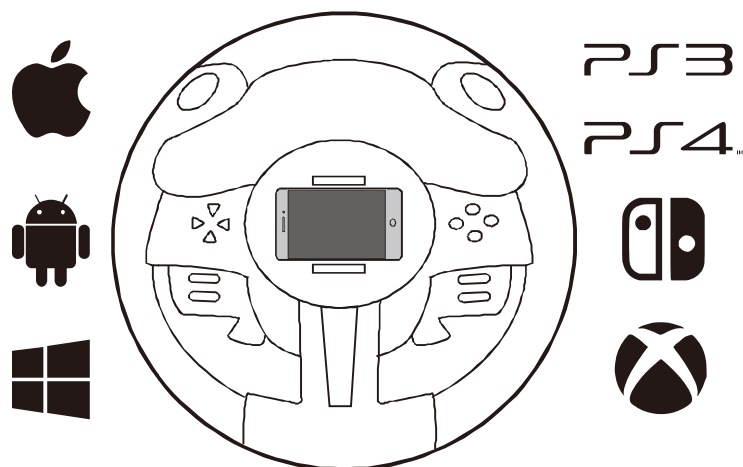


***Actual steering settings may vary from game to game. For more information, please visit <http://www.serafim-tech.com>**

6. Open a racing game, Counter-clockwise rotate your phone to landscape position, and you are good to go.



7. Other compatible consoles for Serafim R1+



Serafim R1+ supports 7 platforms, which are PS3, PS4, Xbox One, Switch, PC Windows, Android, and iOS.

8. Compatible games

- 1. Real Racing 3**
- 2. Asphalt 8**
- 3. Asphalt Xtreme**
- 4. Bike Race**
- 5. CarXDrift Racing**
- 6. CarXDrift Racing 2**
- 7. GT Racing 2**
- 8. Hill Climb Racing**
- 9. Pocket Rally**
- 10. DriftMaxPro**
- 11. Real moto**
- 12. Traffic Rider**

More than 18 games support for iPhone and Android Phone.

Product Specification

1. Technical specification for Serafim R1+

Wheel	270 (H) x 260 (W) x 278 (D) mm
Pedals	135 (H) x 220 (W) x 235 (D) mm
Weight	2,600 g
Support	iOS / Android / PC / PS3 / PS4 / Xbox One/ Switch
Bluetooth 4.0	Supported
USB	Supported
Vibration Feedback	PC / PS3 / PS4 / Xbox One / Switch
In the Box	Racing wheel, Racing pedals, USB cable, Bluetooth module

2. Battery and environmental conditions

Type of dry cells	AAA x3 pcs
Duration for Bluetooth connection	About 200 hours
Operating temperature	0° ~ 35° C
Storage temperature	-20° ~ 45° C
Relative humidity	5% ~ 95%, noncondensing

Key mapping

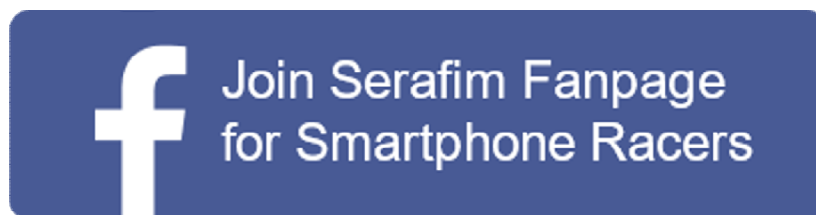
1. Button bindings for Serafim R1+

	PS3	PS4	Xbox One	PC (X-INPUT)	PC (D-INPUT)	Switch
Action	×	×	A	A	2	B
	○	○	B	B	3	A
	□	□	X	X	1	Y
	△	△	Y	Y	4	X
	R1	R1	RB	RB	6	R
	L1	L1	LB	LB	5	L
	R2	R2	RT	RT	8	ZR
	L2	L2	LT	LT	7	ZL
	R3	R3	SR	SR	12	R3
	L3	L3	SL	SL	11	L3
D-pad	UP	UP	UP	UP	UP	UP
	DOWN	DOWN	DOWN	DOWN	DOWN	DOWN
	LEFT	LEFT	LEFT	LEFT	LEFT	LEFT
Function	RIGHT	RIGHT	RIGHT	RIGHT	RIGHT	RIGHT
	START	OPTIONS	Menu	START	10	+
Direction	SELECT	SHARE	View	BACK	9	-
	LX	LX	← / →	← / →	← / →	LX
Left side	□	L2	LT	LT	1	B
Right side	×	R2	RT	RT	2	Y
Change gear	L2	L1	LB	LB	7	ZL
	R2	R1	RB	RB	8	ZR
Left pedal	□	L2	LT	LT	1	B
Right pedal	×	R2	RT	RT	2	Y
Mode	HOME	HOME	X-	X-	13	HOME

Safety Notes

1. Please avoid using under direct sun and heat sources
2. Notice the risk of malfunction if used in an environment with drastic temperature change, high humidity or high-pressure environment
3. Excessive force or impact on the product may cause damage to the product and void the warranty.
4. Never attempt to disassemble, modify and or repair the product by yourself.
5. Please keep the “Serafim Play” running in the background while playing racing games.

6. 95% of Android phones support Serafim R1+. However, some phones, which don't meet minimum requirement, are not compatible with the racing wheels.
7. Unsupported Android devices:
 - Asus Zenphone 5
 - Sony Xperia XA2
 - Oppo A83/A77
 - Vivo V11/V11i
 - Redmi 5



FCC Compliance Information

This device complies with Part 15 of the FCC Rules. Operation is subject to the following two conditions:

- (1) this device may not cause harmful interference, and
- (2) this device must accept any interference received, including interference that may cause undesired operation.

FCC Class B Notice

This equipment has been tested and found to comply with the limits for a Class B digital device, pursuant to Part 15 of the FCC Rules. These limits are designed to provide reasonable protection against harmful interference in a residential installation. This equipment generates, uses, and can radiate

radio frequency energy, and if not installed and used in accordance with the instructions, may cause harmful interference to radio communications. However, there is no guarantee that interference will not occur in a particular installation. If this equipment does cause harmful interference to radio or television reception, which can be determined by turning the equipment off and on, the user is encouraged to try to correct the interference by one or more of the following measures:

- Reorient or relocate the receiving antenna.
- Increase the separation between the equipment and receiver.
- Connect the equipment into an outlet on a circuit different from that to which the receiver is connected.

– Consult the dealer or an experienced radio/TV technician for help.

FCC Warning

This equipment complies with FCC radiation exposure limits set forth for an uncontrolled environment. This equipment should be installed and operated with a minimum distance of 20cm

between the radiator & your body. This transmitter must not be co-located or operating in conjunction with any other antenna or transmitter.

Any changes or modifications not expressly approved by the party responsible for compliance could void the user's authority to operate the equipment.