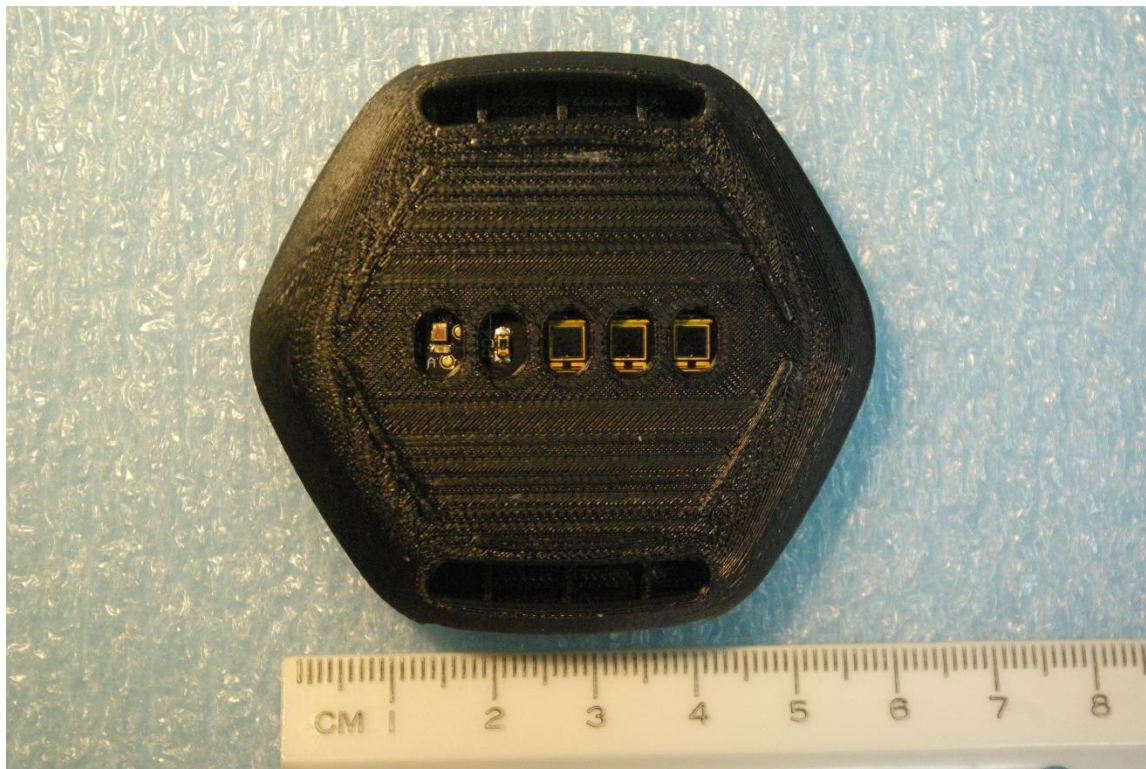


External photographs of equipment under test



Rogers Labs, Inc.
4405 West 259th Terrace
Louisburg, KS 66053
Phone/Fax: (913) 837-3214
Revision 1

Dynometrics Inc.
Model: HUM-HEX-001
Test #: 171023
Test to: CFR47 15C, RSS-210
File: HumHex001 Short Term Conf ExtPho

SN's: ENG1
FCC ID: 2AOCV-HUMHEX001
IC: 23406-HUMHEX001
Date: February 28, 2018
Page 1 of 4



Rogers Labs, Inc.
4405 West 259th Terrace
Louisburg, KS 66053
Phone/Fax: (913) 837-3214
Revision 1

Dynometrics Inc.
Model: HUM-HEX-001
Test #: 171023
Test to: CFR47 15C, RSS-210
File: HumHex001 Short Term Conf ExtPho

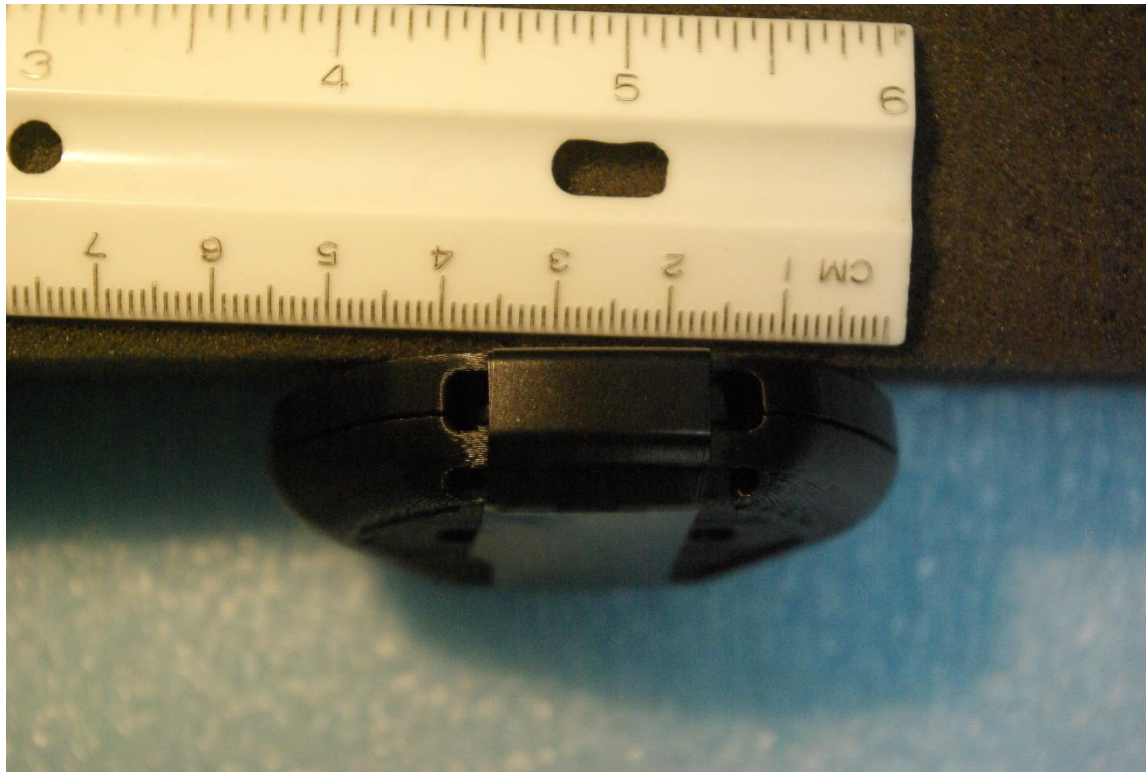
SN's: ENG1
FCC ID: 2AOCV-HUMHEX001
IC: 23406-HUMHEX001
Date: February 28, 2018
Page 2 of 4



Rogers Labs, Inc.
 4405 West 259th Terrace
 Louisburg, KS 66053
 Phone/Fax: (913) 837-3214
 Revision 1

Dynometrics Inc.
 Model: HUM-HEX-001
 Test #: 171023
 Test to: CFR47 15C, RSS-210
 File: HumHex001 Short Term Conf ExtPho

SN's: ENG1
 FCC ID: 2AOCV-HUMHEX001
 IC: 23406-HUMHEX001
 Date: February 28, 2018
 Page 3 of 4



Rogers Labs, Inc.
4405 West 259th Terrace
Louisburg, KS 66053
Phone/Fax: (913) 837-3214
Revision 1

Dynometrics Inc.
Model: HUM-HEX-001
Test #: 171023
Test to: CFR47 15C, RSS-210
File: HumHex001 Short Term Conf ExtPho

SN's: ENG1
FCC ID: 2AOCV-HUMHEX001
IC: 23406-HUMHEX001
Date: February 28, 2018
Page 4 of 4