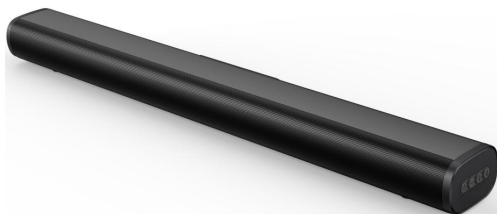


# GS - SB 61

2.1CH soundbar with built-in subwoofer

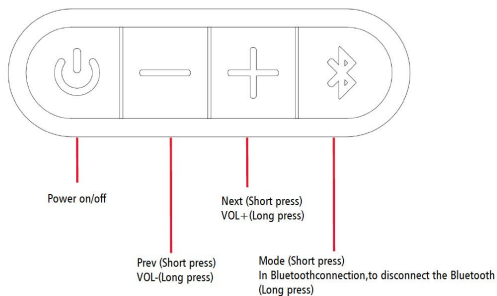


**Instructions Guide**

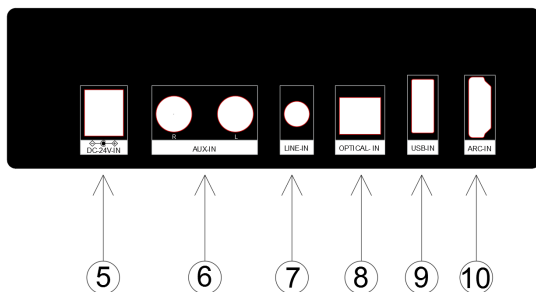
## Contents

<b>Controls And Functions</b> .....	<b>1-3</b>
<b>What's In The Box?</b> .....	<b>4</b>
<b>Support</b> .....	<b>5</b>
<b>User Manual</b> .....	<b>6-13</b>
Using the AUX IN Cable .....	6
Using the ARC Input .....	7
Using the Optical Input .....	8
Using the MP3 Link Connection (Line In) .....	9
Connecting to the Mains Supply .....	10
Using the Bluetooth Operation .....	11
Using the USB Operation .....	12
<b>Troubleshooting</b> .....	<b>13</b>
<b>Specifications</b> .....	<b>14</b>
<b>Quick System Installation Guide</b> .....	<b>15</b>
<b>Safety Information</b> .....	<b>16</b>

## Side View/Control Buttons



## Back View

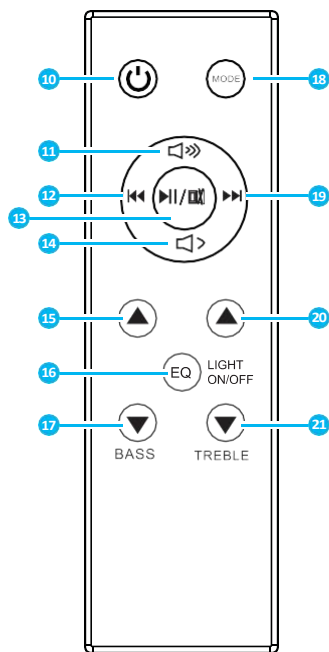


- 5. DC Power Input
- 6. AUX-In Input
- 7. Line-In Input

- 8. Optical Input
- 9. USB Input
- 10. HDMI (ARC) Input

# Controls And Functions

## Remote Control



- 10. Power On/Off**  
Switch the unit between on and Standby mode
- 11. Volume +**  
Press to increase the volume
- 12. Back Step**  
Use in AUX or Bluetooth mode to go back a track.
- 13. Play/Pause**  
Press to play and pause
- 14. Volume -**  
Press to decrease the volume
- 15. Bass Increase**  
Press to increase the bass
- 16. EQ**  
Press the button to adjust the equaliser. Press and **hold** the button to turn the soundbar LED light on and off.
- 17. Bass Decrease**  
Press to decrease the bass
- 18. MODE**  
Press button repeatedly to switch between soundbar modes
- 19. Forward Step**  
Use in AUX or Bluetooth mode to go forward a track
- 20. Treble Increase**  
Press to increase the treble
- 21. Treble Decrease**  
Press to decrease the treble

### Using the Remote Control

---

The remote control sensor at the front of the soundbar is sensitive to the remote control's commands up to a maximum of 10 meters away and within a maximum arc of 30 degrees.

Please note that the operating distance may vary depending on the brightness of the room.

# What's In The Box?

## Box Contents

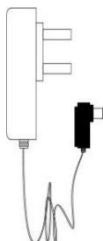
1. GS-SB61 Soundbar
2. Remote Control
3. Power Adapter x 1
4. AUX IN Cable
5. User Manual
6. 3.5mm to 3.5mm Line In Cable
7. Optical Cable



1. GS-SB61 Soundbar



2. Remote Control



3. Power Adapter



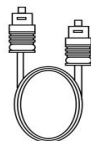
4. AUX Cable



5. User Manual



6. 3.5mm to 3.5mm Line In Cable



7. Optical Cable

## Support

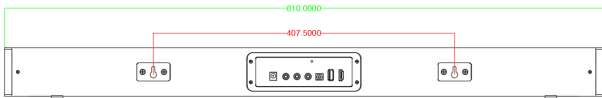
---

Thank you for your purchasing the GS-SB61 Soundbar

Please follow the guidance of the manual to set up your new purchase and begin enjoying its features.

## Soundbar Hook Schematic

---



## Instructions Guide

### Using the AUX IN Cable

Use the AUX Stereo Audio Cable (included) to connect the TV's stereo AUX (L/R) audio output socket.

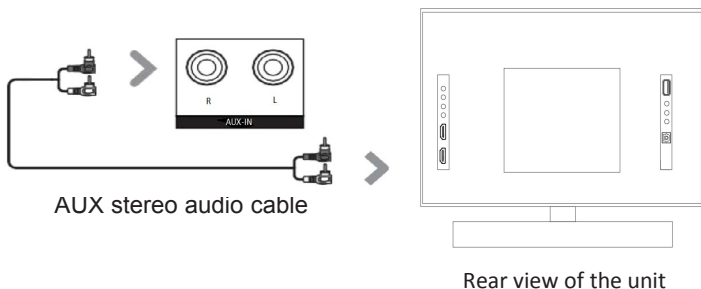
Connect the audio output cable of the soundbar via the 'AUX' input sockets of the unit.

Then press **MODE** on the remote control (**Rem.18**) or press the Mode button on the unit to scroll to the AUX IN function.

Turn on your television

**Troubleshooting:** If you are not receiving a picture or encountering interference, please ensure that the AUX cable is being connected to 'output' AUX port on your TV set. This will ensure that the sound is being exported correctly.

If your TV does not have 'output' AUX port, please use an alternative connection method.





## Using the ARC Input

You will need: An audio source with an ARC Audio Output and a ARC Audio cable (not included).

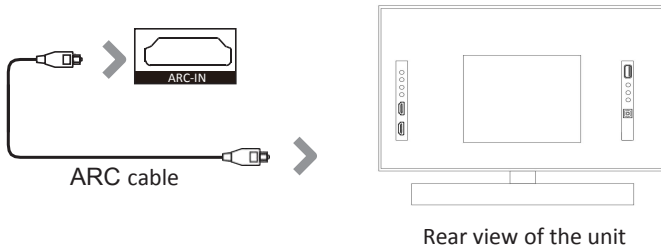
Connect the ARC Audio cable to the ARC output on the audio source and to the ARC Input on the soundbar.

Press the POWER button on the soundbar or POWER button directly on the remote control (**Rem.10**) to switch on the unit.

Press the MODE button on the remote control (**Rem.18**) to switch to ARC mode or select the Mode button on main unit repeatedly to select the ARC mode.

Using the native controls on your connected device, make sure the audio settings are set to ARC or HDMI Audio and are turned on. Audio from the connected audio source will now be played through the speakers.

If you are using this device with a TV for the first time and there is no sound output, you may have the incorrect audio setting assigned on your TV. Please check your TV audio output setting is set to PCM/2-CH"



## Instructions Guide

### Using the Optical Input

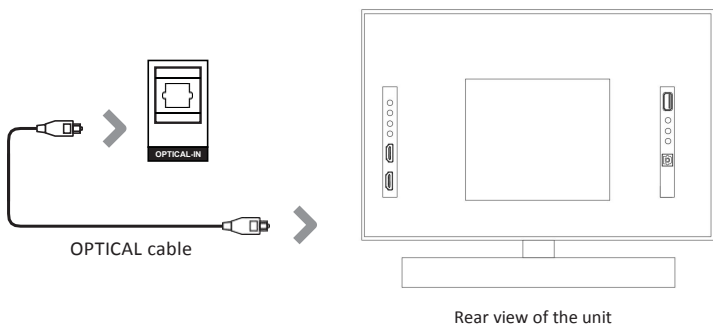
**You will need: An audio source with an Optical Audio Output and a Digital Optical Audio cable ( included).**

Connect the Digital Optical Audio cable to the optical output on the audio source and to the Optical Input on the soundbar.

Press the POWER button on the soundbar or POWER button directly on the remote control (**Rem.10**) to switch on the unit.

Press the MODE button on the remote control (**Rem.18**) to switch to Optical mode or select the Mode button on main unit repeatedly to select the Optical mode.

Using the native controls on your connected device, make sure the audio settings are set to PCM or Optical Audio and are turned On. Audio from the connected audio source will now be played through the speakers.



### Using the MP3 Link Connection (Line In)

---

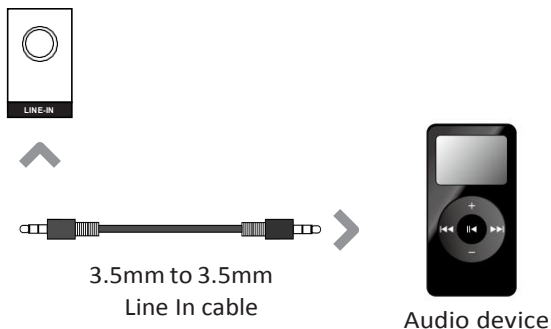
Plug one end of a 3.5mm to 3.5mm Line In cable (included) into the Line In port on the unit. Before use, disconnect any cables connected to the Stereo RCA Inputs.

Plug the other end of the cable into the audio output/headphone output on an MP3 player or other audio source.

Press the Power button on the soundbar or POWER button directly on the remote control (**Rem.10**) to switch on the unit.

Press the Mode button repeatedly on the soundbar or press the MODE button on remote control (**Rem.18**) repeatedly to enter LINE in mode.

Audio played through the connected device will now be heard through the speakers.



## Instructions Guide

### Connecting to the Mains Supply

---

Ensure that the power supply voltage is in the voltage of 100V~240V.

This unit is designed to use adapter.

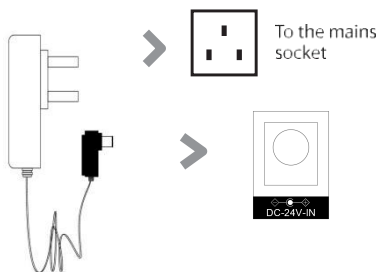
Connecting the unit to any other power source may cause damage to the unit.

Unwind the mains cable to its full length.

Connect the mains plug to a mains socket.

Make sure the mains plug is fully inserted into the mains socket.

Connect the adapter to the unit via the DC input Socket.  
(DC-24V-IN)



DC-in Power Cable



Ensure all audio connections of the unit are connected before connecting to the mains power socket.

Unplug the power cord from the outlet when the unit is use for an extended period of time.

### Using the Bluetooth Operation

---

#### Pairing a Bluetooth Device for the First Time

Press the POWER button on the unit or the POWER button on the remote control (**Rem.10**) to switch on the unit.

Select and press the MODE button repeatedly on the remote control until in Bluetooth mode (**Rem.18**) or press the Mode button repeatedly on the soundbar to enter Bluetooth mode.

Using the native controls on your Bluetooth device, select the “GS-SB61” in your Bluetooth settings to pair.

Refer to the user manual for your specific device for instructions on pairing and connecting Bluetooth devices.

When successfully paired and connected, a beep will issue from the unit. After initial pairing, the unit will stay paired unless unpaired manually by the user.

If your device should become unpaired or you find it is unable to connect, repeat the above steps.

## Instructions Guide

### Playing Audio Wirelessly

---

Follow the instructions for pairing a Bluetooth device.

Use the native controls on the connected Bluetooth Device to select a track.

To Play/Pause the track or Skip Forwards/Backwards to a selected track, use the remote control (**Rem.12,13,19**).

Audio played through the connected Bluetooth device will now be heard through the speakers.

### Using the USB Operation

---

Insert USB to Play Music Automatically.

Select and press the MODE button repeatedly on the remote control until in USB mode (Rem.18 or press the Mode button repeatedly on the sound bar to enter USB (Cyan) mode.

To Play/Pause the track or Skip Forwards/Backwards to a selected track, use the remote control (**Rem.12,13,19**).

Audio played through the connected USB device will now be heard through the speakers.

# Troubleshooting

## Troubleshooting

---

If the soundbar does not work properly as desired, please check the following.

<b>Malfunction</b>	<b>Possible causes/measures</b>
No power / function	Check whether the power is switched on or off at the wall. Check whether the power adaptor is properly connected to power outlet or not.
No sound	Check whether cables are properly installed. If they are, please try alternative cable to connect to your TV if possible. Check unit is out of standby and in mode.
No sound from bluetooth connection	Forget the soundbar from your device and reconnect.
Function disturbance	Switch off and unplug the unit. Leave it for 2 minutes and switch it on again. If a particular mode is causing problems, please try an alternative connection to your TV such as Optical or Bluetooth.
Remote control does not work [properly]	Check whether the battery run out or not. Replace with a new one if necessary. Check whether there is obstacle on the front of remote sensor.

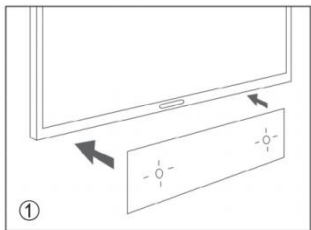
## Specifications

### Specifications

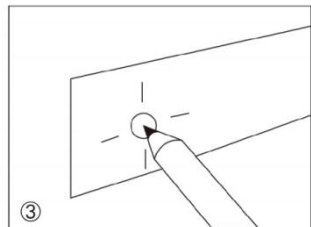
Power Supply	DC 24V / 2.0A
Output Power(RMS @ THD<3%)	2 x 16W+42W=74W
Channel	2.1CH
Speaker Size & Number of Speakers	2.25" Full range speaker + built-in 2.25" subwoofer x 2
Working environment (Temperature)	-10~ + 55C
Frequency Response	60Hz - 20KHz
Bluetooth Version	5.0
Bluetooth Distance	Straight line 10 meters
Dimension (mm)	L 810 X D 100 X H 65mm



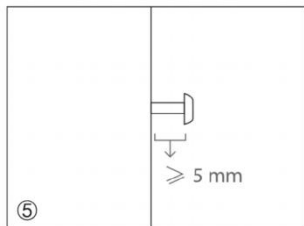
## Quick System Installation Guide



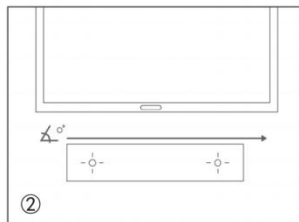
Place the paper guide on the wall where you want to hang the soundbar.



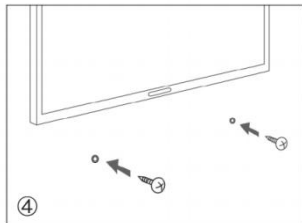
Locate the screw holes on the paper guide and mark a point with a pencil.



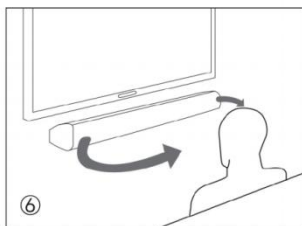
It is advisable to leave no more than 5mm between the head of the screw and the wall to minimize the inclination angle of the soundbar.



Verify with a level gauge that the inclination angle of the soundbar is zero degrees.



Make the holes with the corresponding drill bit according to the type of wall.



For a better sound experience, it is advisable to place the soundbar at the same height of the ear.

# Safety Information

1. Read these user manual.
2. Keep these user manual.
3. Heed all Warnings
4. Follow all instructions
5. Do not clean the apparatus near or with water
6. Do not block any ventilation openings. Install in accordance with the manufacturer's instructions
7. Do not install near any heat sources such as radiators, heat registers, stoves, or other apparatus (including amplifiers) that produce heat.
8. Protect the power from being walked on or pinched particularly at plugs, convenience receptacles, and the point where they exit from the apparatus.
9. Only use attachments/accessories specified by the manufacturer.
10. Unplug this apparatus during light storms or when unused for long periods of time.
11. Refer all servicing to qualified service personnel. Servicing is required when the apparatus has been damaged in a way, such as power-supply cord or plug is damaged, liquid has been spilled or objects have fallen into the apparatus, the apparatus has been exposed to the rain or moisture, does not operate normally or has been dropped.
12. No naked flame sources, such as lit candles, should be placed on the apparatus.
13. Dispose of used electrical products and batteries safely according to your local authority and regulations.

## ADDITIONAL WARNINGS

The apparatus shall not be exposed to dripping or splashing and no objects filled with liquid, such as vases, shall be placed on the apparatus.

Main plug is used to disconnect device and it should remain readily operable during intended use. In order to disconnect the apparatus from the main mains completely, the mains plug should be disconnected from the main socket outlet completely. Battery shall not be exposed to excessive heat such as sunshine, fire or the like.

## RECYCLING ELECTRICAL PRODUCTS

You should now recycle your waste electrical goods and in doing so help the environment.



This symbol means an electrical product should not be disposed of with normal household waste.

Please ensure it is taken to a suitable facility for disposal when finished with.

**IMPORTANT:** Please read all instructions carefully before use and keep for future reference.



Risk of electric shock.  
Do not open



Read all instructions carefully before use and keep for future reference



When servicing, use only identical replacement parts



## CAUTION

RISK OF ELECTRIC SHOCK DO NOT OPEN



**IMPORTANT:** Please read all instructions carefully before use and keep for future reference.

## FCC WARNING

This device complies with part 15 of the FCC Rules. Operation is subject to the following two conditions: (1) this device may not cause harmful interference, and (2) this device must accept any interference received, including interference that may cause undesired operation.

Any changes or modifications not expressly approved by the party responsible for compliance could void the user's authority to operate the equipment.

NOTE: This equipment has been tested and found to comply with the limits for a Class B digital device, pursuant to Part 15 of the FCC Rules. These limits are designed to provide reasonable protection against harmful interference in a residential installation. This equipment generates, uses and can radiate radio frequency energy and, if not installed and used in accordance with the instructions, may cause harmful interference to radio communications. However, there is no guarantee that interference will not occur in a particular installation. If this equipment does cause harmful interference to radio or television reception, which can be determined by turning the equipment off and on, the user is encouraged to try to correct the interference by one or more of the following measures:

- Reorient or relocate the receiving antenna.
- Increase the separation between the equipment and receiver.
- Connect the equipment into an outlet on a circuit different from that to which the receiver is connected.
- Consult the dealer or an experienced radio/TV technician for help.

To maintain compliance with FCC's RF Exposure guidelines, This equipment should be installed and operated with minimum distance between 20cm the radiator your body: Use only the supplied antenna.