

GS-SB60S

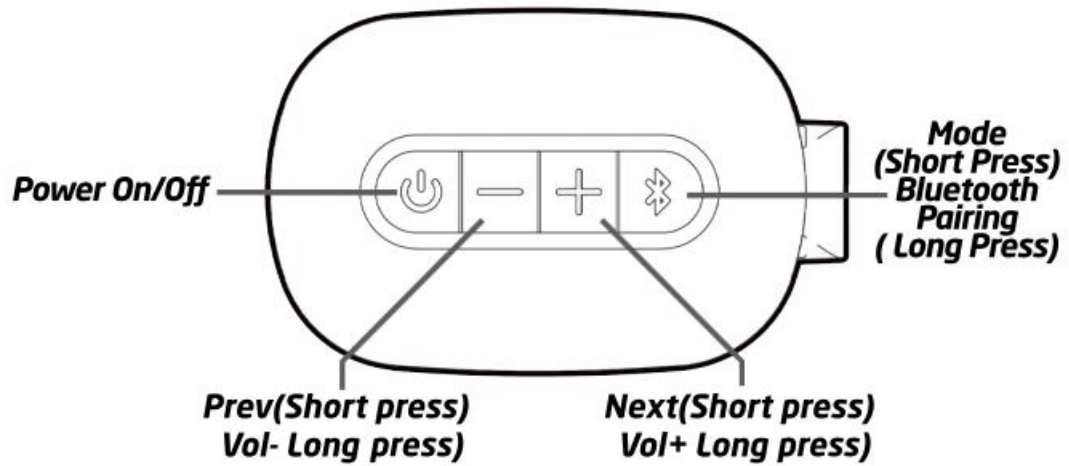
Soundbar



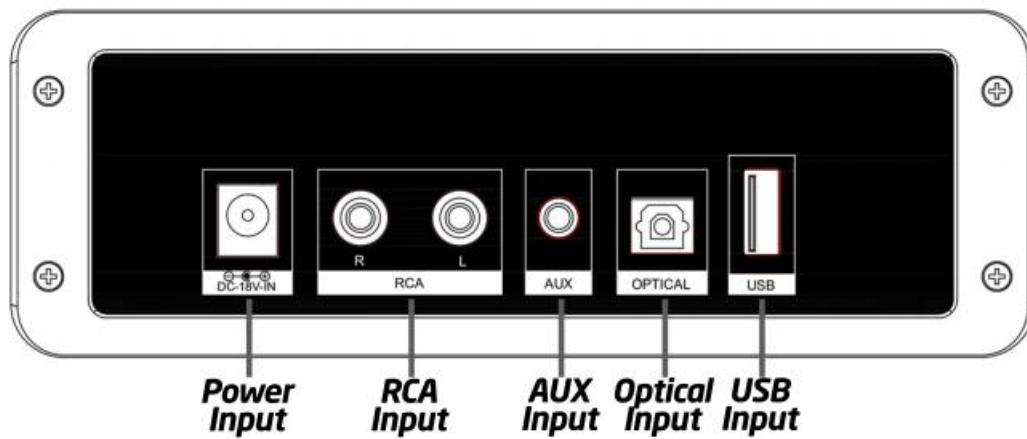
Functions.....	1-2
What's In The Box.....	3
Instructions Guide.....	4-6
Connecting to the Mains Supply.....	4
Bluetooth Operation.....	4
Using the USB Input.....	5
Using the RCA Input.....	5
Using the Optical Input.....	6
Using the AUX Input.....	6
Troubleshooting.....	7
Wall mount Installation.....	8
Features & Specifications.....	9
Safety Information.....	10
Support & Warranty.....	11

FUNCTIONS

SIDE VIEW

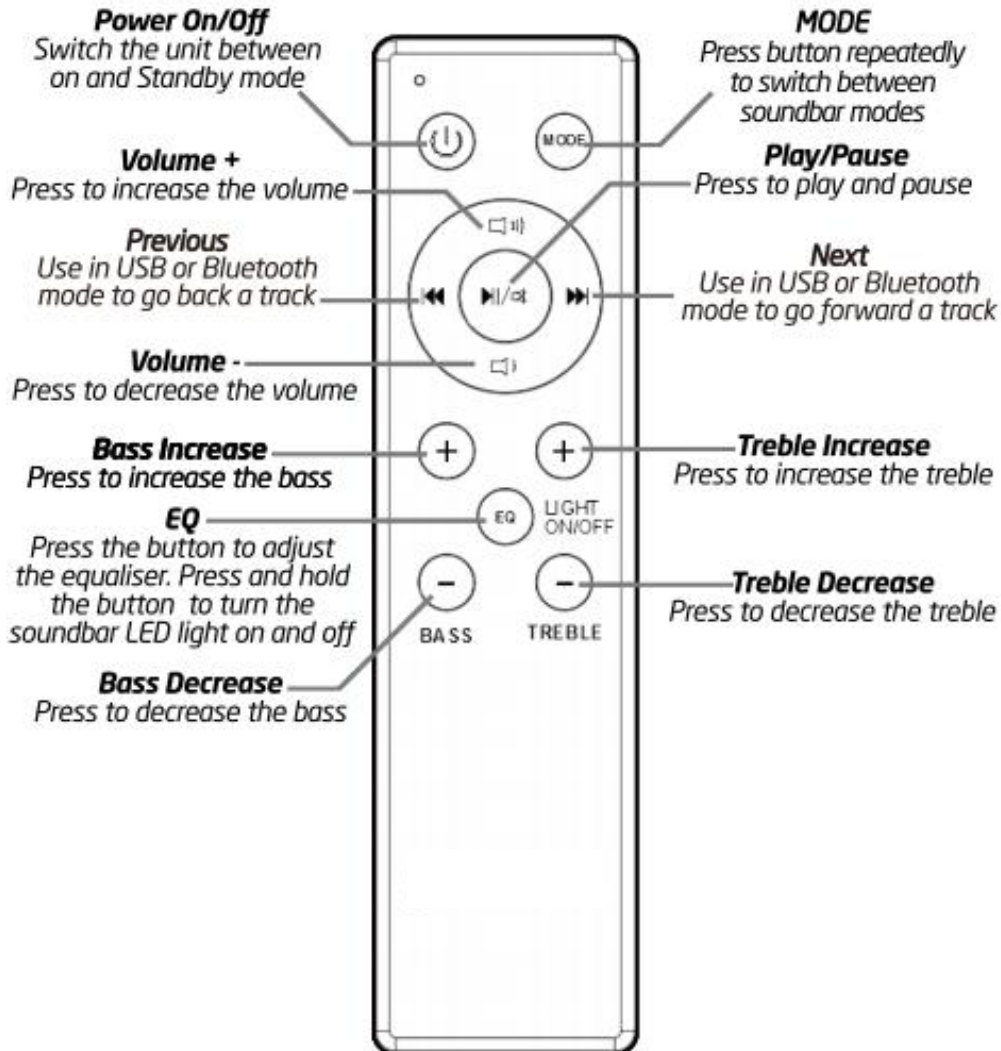


BACK VIEW



FUNCTIONS

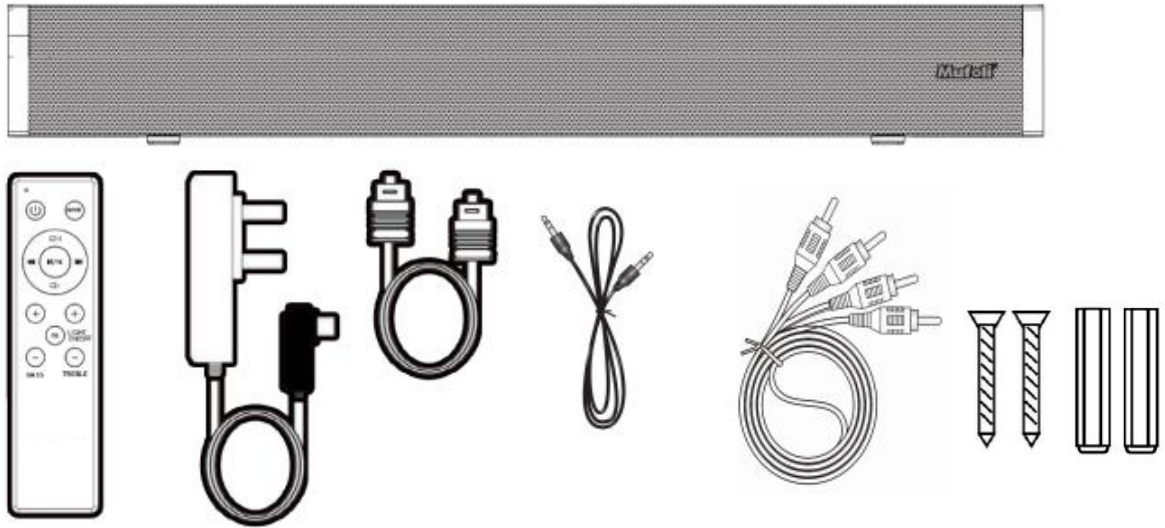
Remote Buttons



Using the Remote Control

The remote control sensor at the front of the soundbar is sensitive to the remote control's commands up to a maximum of 8 metres away and within a maximum arc of 30 degrees. Please note that the operating distance may vary depending on the brightness of the room.

WHAT'S IN THE BOX



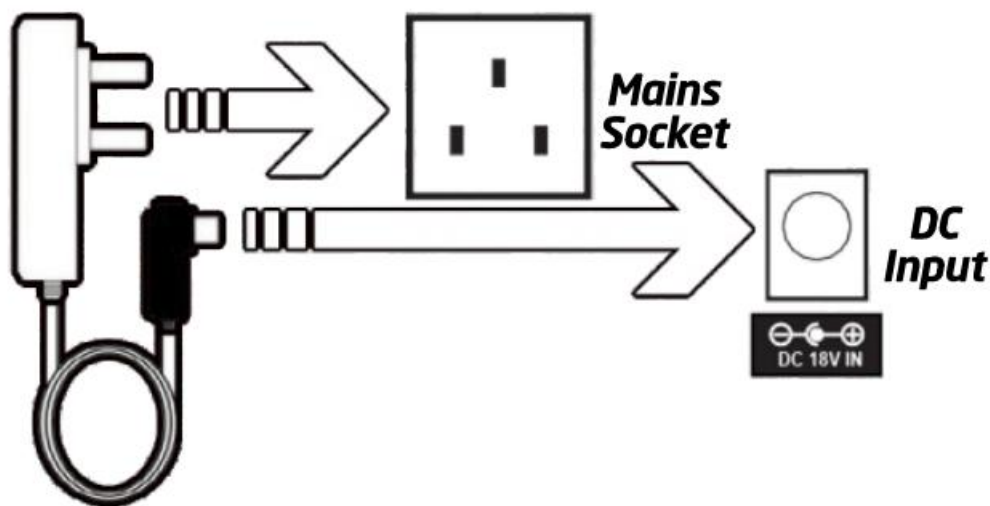
BOX CONTENTS

- GS-SB60S Soundbar X 1
- Remote control(batteries not included) X 1
- Power adaptor X 1
- OPTICAL cable X 1
- RCA cable X 1
- AUX IN cable X 1
- Wall mount kits X 1

INSTRUCTIONS GUIDE

Connecting to the Mains Supply

Ensure that the power supply voltage is in the voltage of 100V~240V. This unit is designed to use the supplied adapter only. Connecting the unit to any other power source may cause damage to the unit. Unwind the mains cable to its full length. Connect the mains plug to a mains socket. Make sure the mains plug is fully inserted into the mains socket. Connect the adapter to the unit via the DC input Socket.(DC-18V-IN)



NOTE: Ensure all audio connections of the unit are connected before connecting to the mains power socket.

Bluetooth Operation

Pairing a Bluetooth Device for the First Time. Press the POWER button on the unit or the POWER button on the remote control to switch on the unit. Select and press the MODE button repeatedly on the remote control until in Bluetooth mode or press the Mode button repeatedly on the soundbar to enter Bluetooth mode. Using the controls on your Bluetooth device, select the "GS-SB60S" in your Bluetooth settings to pair. Refer to the user manual for your specific device for instructions on pairing and connecting Bluetooth devices. When successfully paired and connected, a beep will issue from the unit. After initial pairing, the unit will stay paired unless unpaired manually by the user. If your device should become unpaired or you find it is unable to connect, repeat the above steps.

Playing Audio Wirelessly

Follow the instructions for pairing a Bluetooth device. Use the controls on the connected Bluetooth Device to select a track. To Play/Pause the track or Skip Forwards/Backwards to a selected track, use the remote control. Audio played through the connected Bluetooth device will now be heard.

INSTRUCTIONS GUIDE

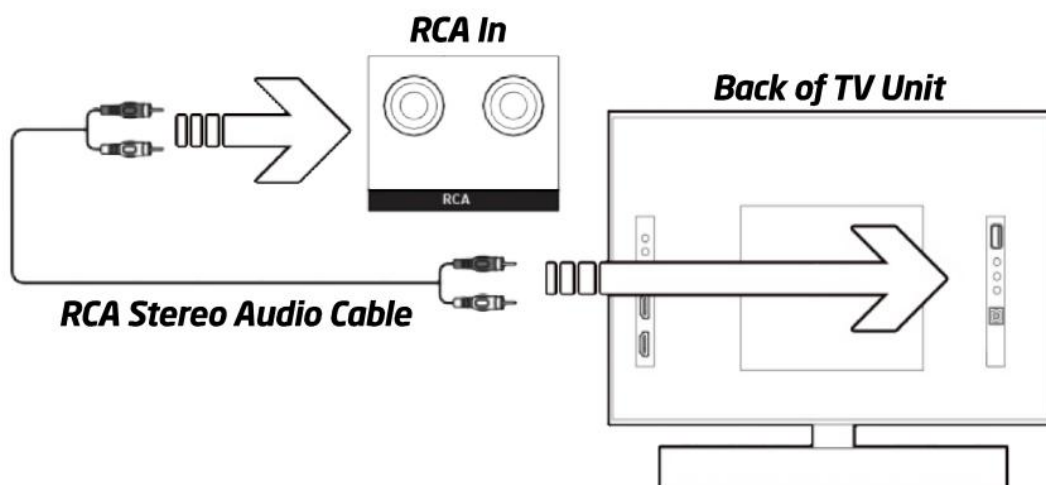
Using the USB Input

Insert a USB drive to Play Music Automatically. Select and press the MODE button repeatedly on the remote control until in USB mode or press the Mode button repeatedly on the sound bar to enter USB mode. To Play/Pause the track or Skip Forwards/Backwards to a selected track, use the remote control. Audio played through the connected USB device will now be heard.

Using the RCA Input

Use an RCA Stereo Audio Cable (included) to connect to the TV's stereo RCA (L/R) audio output sockets. Connect the audio output cable of the soundbar via the 'RCA input sockets of the unit. Then press MODE on the remote control or press the Mode button on the unit to scroll to the RCA function. Turn on your television.

Troubleshooting: If you are not receiving a picture or encountering interference, please ensure that the RCA cable is being connected to the 'output' RCA port on your TV set. This will ensure that the sound is being exported correctly. If your TV does not have 'output' RCA port, please use an alternative connection method.

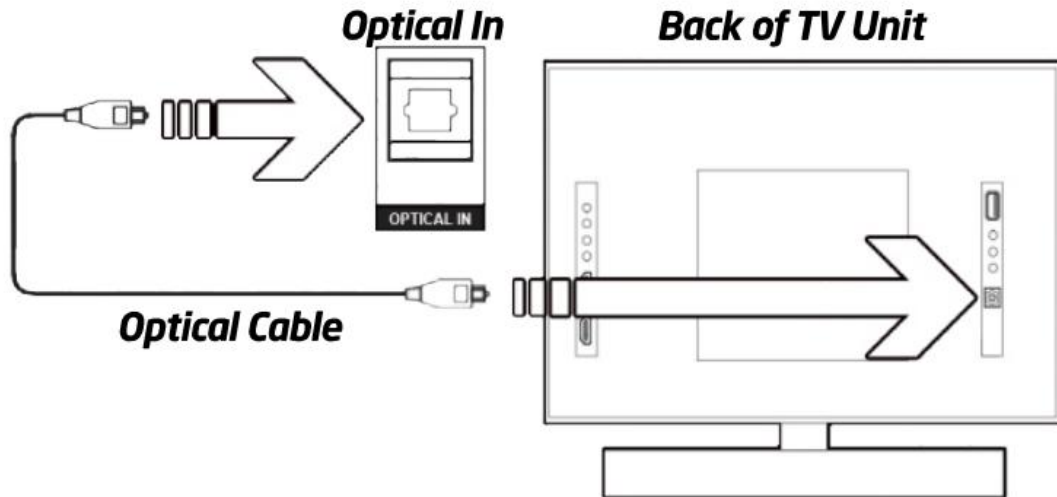


INSTRUCTIONS GUIDE

Using the Optical Input

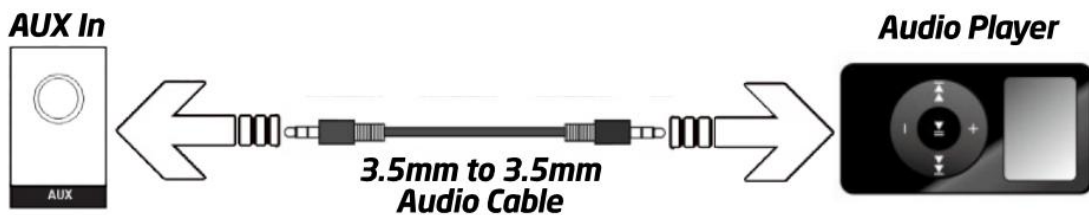
You will need: An audio source with an Optical Audio Output and an Optical cable(included). Connect the Optical Audio cable to the optical output on the audio source and to the Optical Input on the soundbar. Press the POWER button on the soundbar or POWER button directly on the remote control to switch on the unit. Press the MODE button on the remote control to switch to Optical mode or select the MODE button on the main unit press repeatedly to select the Optical mode.

Using the controls on your connected device, make sure the audio settings are set to PCM or Audio and are turned On. Audio from the connected audio source will now be played through the speakers.



Using the AUX Input

Plug one end of a 3.5mm to 3.5mm Aux In cable (included) into the AUX In port on the unit. Before use, disconnect any cables connected to the Stereo RCA Inputs. Then plug the other end of the cable into the audio output or an MP3 player or other audio source. Press the Power button on the soundbar or Power button directly on the remote control to switch on the unit. Press the Mode button repeatedly on the soundbar or press the MODE button on remote control repeatedly to enter AUX mode. Audio played through the connected device will now be heard through the speakers.



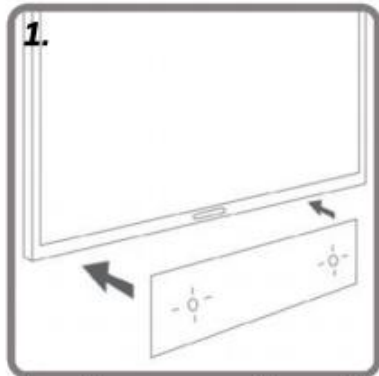
TROUBLESHOOTING

If the soundbar does not work properly as desired, please check the following,

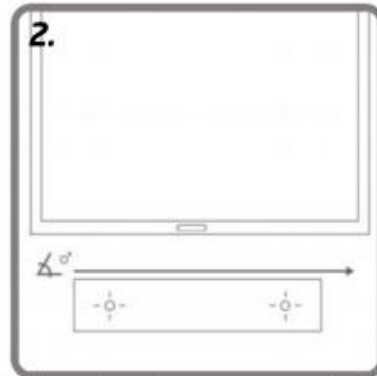
Malfunction	Possible Cause/ Measures
No power / function	Check whether the power is switched on or off at the wall. Check whether the power adaptor is properly connected to power outlet or not.
No sound	Check whether cables are properly installed. If they are, please try alternative cable to connect to your TV if possible. Check unit is out of standby and in mode.
No sound from Bluetooth connection	Disconnect the soundbar from your device and reconnect.
Function disturbance	Switch off and unplug the unit. Leave it for 2 minutes and switch it on again. If a particular mode is causing problems, please try an alternative connection to your TV such as Optical or Bluetooth.
Remote control does not work [properly]	Check whether the batteries have run out or not. Replace with a new ones if necessary. Check whether there is an obstacle blocking the remotes signal.

WALL MOUNT INSTALLATION

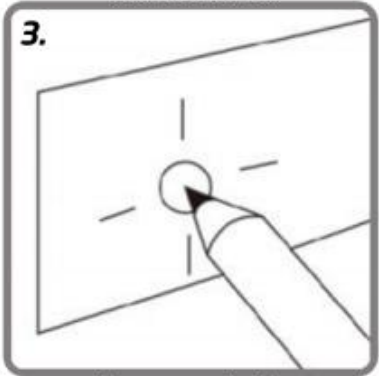
Wall Mount Installation



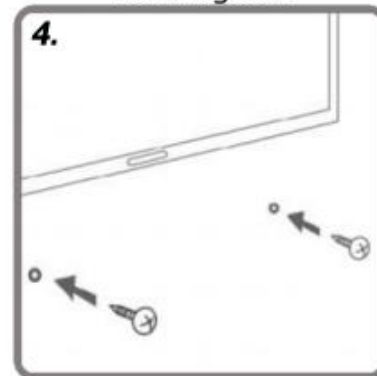
1. Place the paper guide on the wall where you want to hang the Soundbar



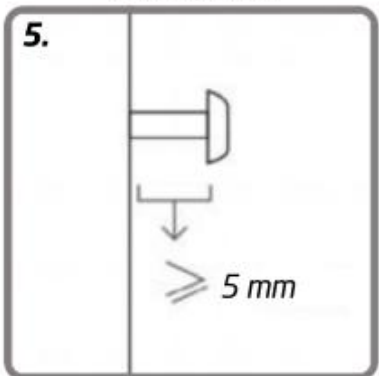
2. Verify with a level gauge that the inclination of the Soundbar is zero degrees



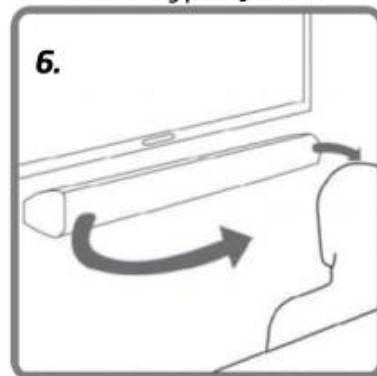
3. Locate the screw holes on the paper guide and mark a point with a pencil.



4. Make the holes with the corresponding drill bit according to the type of wall.



5. It is advisable to leave no more than 5mm between the head of the screw and the wall to minimise the inclination angle of the Soundbar.



6. For better sound experience, it is advisable to place the Soundbar at the same height as your ears.

FEATURES & SPECIFICATIONS

Features

- Speakers: 30W RMS power & 75W peak power
- Full-range speakers with super bass
- Compatible with most TV's for home theatre sound
- Wireless Bluetooth speaker
- connect to your TV, PC, Laptop, Computer, Smartphone, Tablet
- LED display panel
- Crisp & clear sound with deep base
- 3 sound modes (Music, Movie, Voice)
- Base & Treble controls
- Easy controls
- 5 Input modes: Optical, RCA, USB, AUX (3.5mm), Bluetooth
- RCA/AUX/OPTICAL cables included
- Remote control (included)
- requires 2 × AAA batteries (not included)

Specifications

Bluetooth chipset: 5.0

Bluetooth profiles: A2DP, AVRCP, SPP

Bluetooth frequency range: 2.402-2.480 GHZ

Wireless range: 10M (open area)

Power supply: AC100~240V/50~60Hz, DC 18V/1.3A

Speaker power: 30W (2 x 15W)

Speaker channel: 2.0

Safety Information

1. Read these instructions.
2. Keep these instructions.
3. Heed all warnings
4. Follow all instructions
5. Do not clean the apparatus near or with water
6. Do not block any ventilation openings. Install in accordance with the manufacturer's instructions
7. Do not install near any heat sources such as radiators, heat registers, stoves, or other apparatus (including amplifiers) that produce heat.
8. Protect the power from being walked on or pinched particularly at plugs, convenience receptacles, and the point where they exit from the apparatus.
9. Only use attachments/accessories specified by the manufacturer.
10. Unplug this apparatus during light storms or when unused for long periods of time.
11. Refer all servicing to qualified service personnel. Servicing is required when the apparatus has been damaged in a way, such as power-supply cord or plug is damaged, liquid has been spilled or objects have fallen into the apparatus, the apparatus has been exposed to the rain or moisture, does not operate normally or has been dropped.
12. No naked flame sources, such as lit candles, should be placed on the apparatus.
13. Dispose of used electrical products and batteries safely according to your local authority and regulations.

ADDITIONAL WARNINGS

The apparatus shall not be exposed to dripping or splashing and no objects filled with liquid, such as vases, shall be placed on the apparatus. Main plug is used to disconnect device and it should remain readily operable during intended use. In order to disconnect the apparatus from the main mains completely, the mains plug should be disconnected from the main socket outlet completely. Battery shall not be exposed to excessive heat such as sunshine, fire or the like.

RECYCLING ELECTRICAL PRODUCTS



You should now recycle your waste electrical goods and in doing so help the environment. This symbol means an electrical product should not be disposed of with normal household waste.

Please ensure it is taken to a suitable facility for disposal when finished with.



IMPORTANT: Please read all instructions carefully before use and keep for future reference.



Risk of electric shock. Do not open



Read all instructions carefully before use and keep for future reference.



SUPPORT & WARRANTY

If you require further assistance with your new soundbar, please contact our team by email. All products come with a standard 12 month warranty. If you have any problem with the product, please feel free to contact us by email.

Shenzhen Huilang Electronics Technology Co., Ltd.
301, Building T1, Second Industrial Zone, Xitian Community, Gongming Street, Guangming District

sales3@huilatech.com

FCC WARNING

This device complies with part 15 of the FCC Rules. Operation is subject to the following two conditions: (1) this device may not cause harmful interference, and (2) this device must accept any interference received, including interference that may cause undesired operation.

Any changes or modifications not expressly approved by the party responsible for compliance could void the user's authority to operate the equipment.

NOTE: This equipment has been tested and found to comply with the limits for a Class B digital device, pursuant to Part 15 of the FCC Rules. These limits are designed to provide reasonable protection against harmful interference in a residential installation. This equipment generates, uses and can radiate radio frequency energy and, if not installed and used in accordance with the instructions, may cause harmful interference to radio communications. However, there is no guarantee that interference will not occur in a particular installation. If this equipment does cause harmful interference to radio or television reception, which can be determined by turning the equipment off and on, the user is encouraged to try to correct the interference by one or more of the following measures:

- Reorient or relocate the receiving antenna.
- Increase the separation between the equipment and receiver.
- Connect the equipment into an outlet on a circuit different from that to which the receiver is connected.
- Consult the dealer or an experienced radio/TV technician for help.

To maintain compliance with FCC's RF Exposure guidelines, This equipment should be installed and operated with minimum distance between 20cm the radiator your body: Use only the supplied antenna.