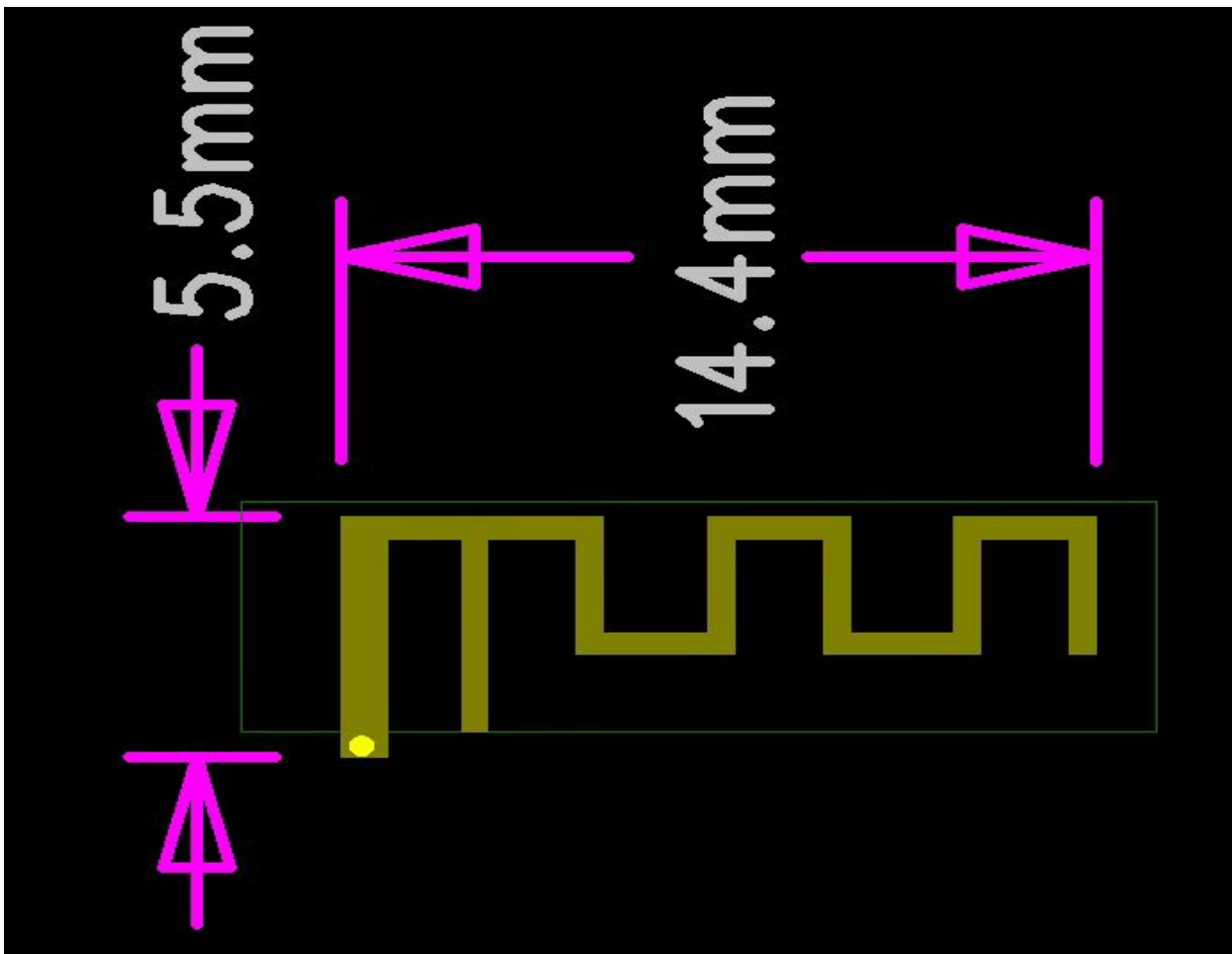


Product specification

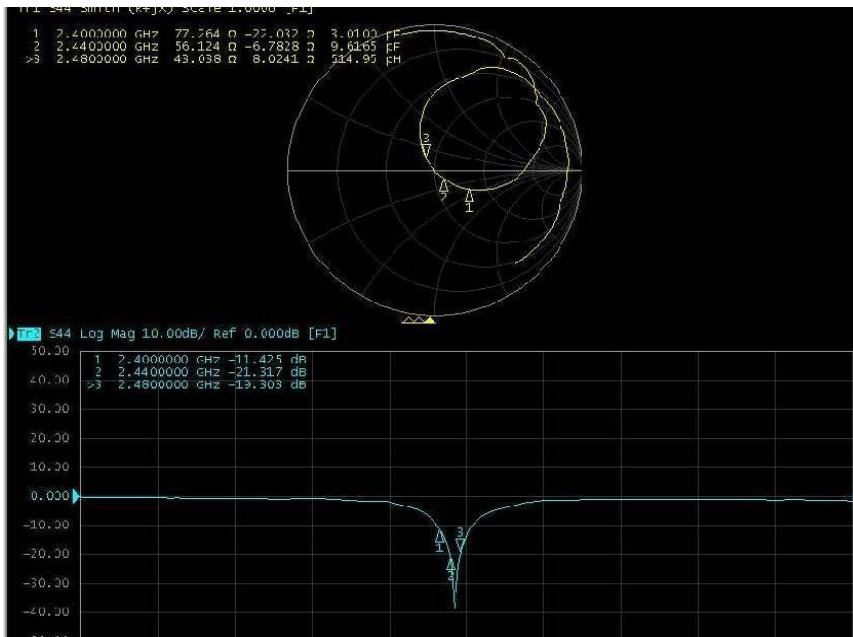
Quick Reference

	Antenna module on the system board
Frequenc Range	2400 ~ 2500MHz
Ant. Port Input Pwr. (dBm)	0 (Typ. BT class 2 output power)
Tot. Rad. Pwr. (dBm)	-1.2 (Input pwr – loss pwr)
Directivity (dBi)	1 (all direction antenna)
Efficiency (dB)	6 0.2 %
Gain (dBi)	1.9
Input Impedence(ohm)	50
Polarization Type	Vertical & Horizontal
Manufacturer:	Shenzhen Gosingo Electronics Co., Ltd.

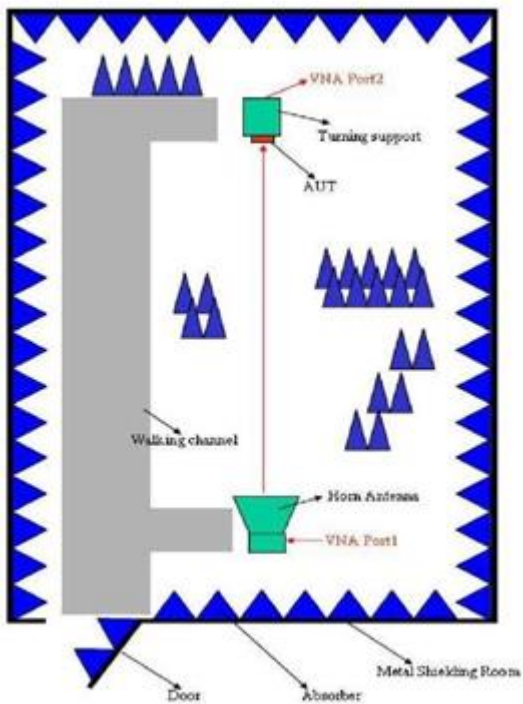
Antenna Layout & module on the system board



Return Loss



The Environment of Antenna Radiation Pattern

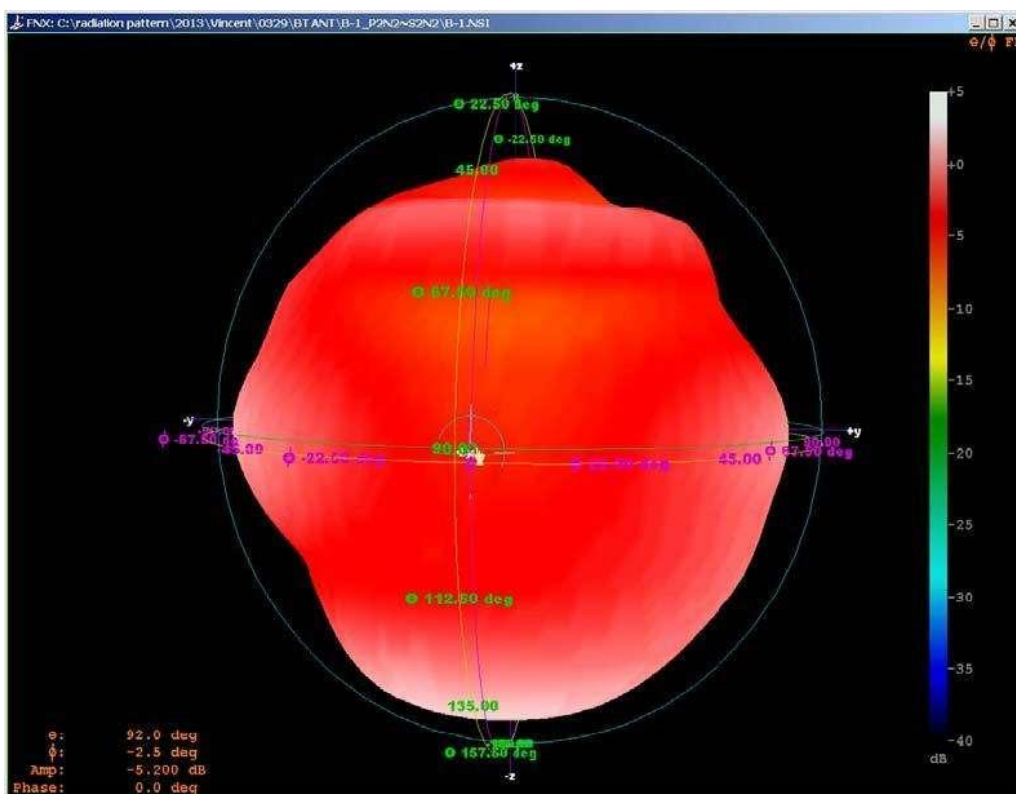


Antenna Gain Gain Table

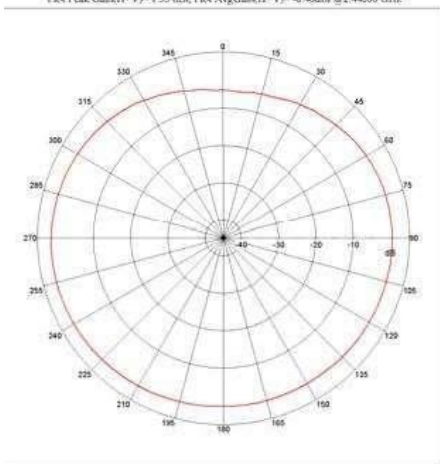
Gain Table

Unit in dBi @2.44GHz	XY-plane		XZ-plane		YZ-plane		Efficiency
	Peak	Avg.	Peak	Avg.	Peak	Avg.	
Module Board	1.2	-0.5	1.9	-3.6	1.1	-3.0	6 0.2 %

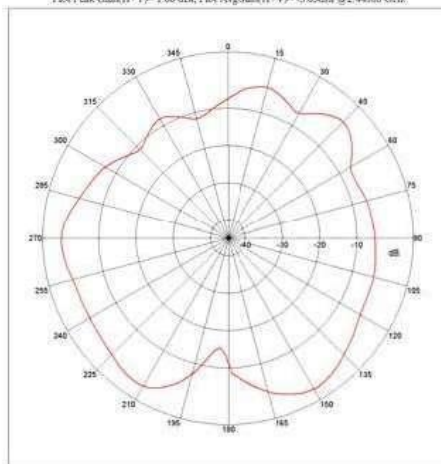
3D radiation pattern diagram XY-plane XZ-plane YZ-plane



Far-field Power Distribution(H+V) on X-Y Plane
Plot Peak Gain(H+V)= 1.35 dBi, Plot AvgGain(H+V)= -0.48dBi @2.44000 GHz



Far-field Power Distribution(H+V) on X-Z Plane
Plot Peak Gain(H+V)= 1.08 dBi, Plot AvgGain(H+V)= -3.83dBi @2.44000 GHz



Far-field Power Distribution(H+V) on Y-Z Plane
Plot Peak Gain(H+V)= 1.11 dBi, Plot AvgGain(H+V)= -2.99dBi @2.44000 GHz

