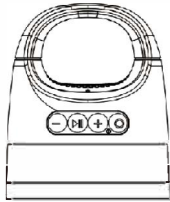


345*138MM 正

BUTTON FUNCTIONS

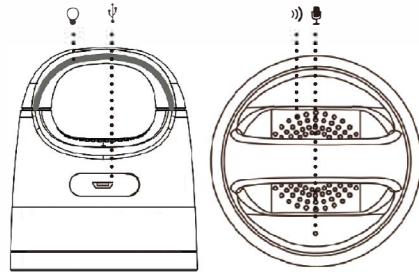
- Single Press -Volume Down
Press and Hold-Previous Track
- ▮ Single Press-Pause/Play(Answer/End Call)
Double Press-Redial the last #
- + Single Press-Volume Up
Press and Hold-Next Track
- Press and Hold-Turn ON/OFF the speaker
Single Press-Change the strobing lights
Double Press-Turn ON/OFF the strobing lights



For some devices, speaker controls may function differently than advised here. Refer to the functions and controls of your device for use.

BUTTON FUNCTIONS

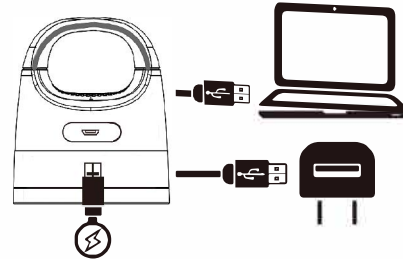
- 💡 Color changing lights
- 🔌 Charging input-port
- 🔊 Speaker
- 🎤 Microphone



RECHARGING

Using the provided charging cable, plug the Micro-USB end into the speaker and the USB end into an AC walladapter, a computer, or another power source.

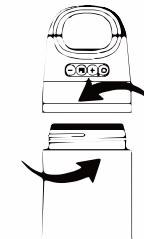
When the speaker has a low battery, two beeps will sound and the LED indicator will flash blue.



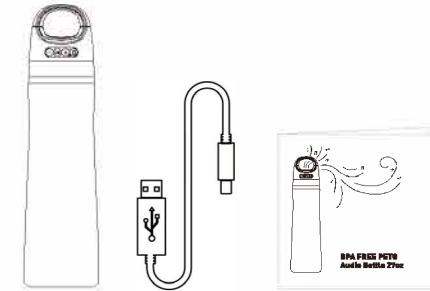
CLEANING

To clean the bottle, twist to separate the speaker lid from the bottle body. Clean the bottle separately to avoid damage to the speaker.

- Hand wash recommended
- Use a non-abrasive cleaner
- To clean the speaker, wipe with a damp cloth



WHAT'S INSIDE



The Audio Bottle, a Micro-USB to USB charging cable, and an instruction manual.



BLUETOOTH
Water Bottle Speaker

FCC Statement

This equipment has been tested and found to comply with the limits for a Class B digital device pursuant to part 15 of the FCC Rules. These limits are designed to provide reasonable protection against harmful interference in a residential installation. This equipment generates uses and can radiate radio frequency energy and if not installed and used in accordance with the instructions may cause harmful interference to radio communications. However there is no guarantee that interference will not occur in a particular installation. If this equipment does cause harmful interference to radio or television reception which can be determined by turning the equipment off and on the user is encouraged to try to correct the interference by one or more of the following measures:

- Reorient or relocate the receiving antenna.
 - Increase the separation between the equipment and receiver.
 - Connect the equipment into an outlet on a circuit different from that to which the receiver is connected.
 - Consult the dealer or an experienced radio/TV technician for help.
- Caution: Any changes or modifications to this device not explicitly approved by manufacturer could void your authority to operate this equipment.

This device complies with part 15 of the FCC Rules. Operation is subject to the following two conditions: (1) This device may not cause harmful interference and (2) this device must accept any interference received including interference that may cause undesired operation.

RF Exposure Information

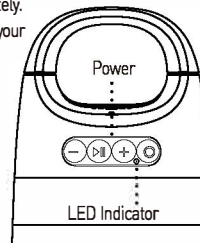
The device has been evaluated to meet general RF exposure requirement. The device can be used in portable exposure condition without restriction.

TECH SPECIFICATIONS

Working Volume	3.4-4.2V
Charging Power	DC 5V/500mA
Bluetooth Version	5.0
Recharge Method	Micro-USB
Battery Capacity	700mAh
Rated Power	3W
Bluetooth Range	<25 feet
Bottle Material	PETG (BPA Free)
Product Size	3.07 X 3.07 X 11.50"
Product Weight	0.48lbs
FCC ID	will be added by supplier

CONNECTING TO BLUETOOTH

- Make sure the bluetooth is turned on - on your device.
- Press and hold the power button in, when the speaker turns on, the LED indicator will flash blue. The speaker will enter pairing mode immediately.
- Select **Bluego** from the list on your bluetooth enabled device.
- Start playing music!



Made in China