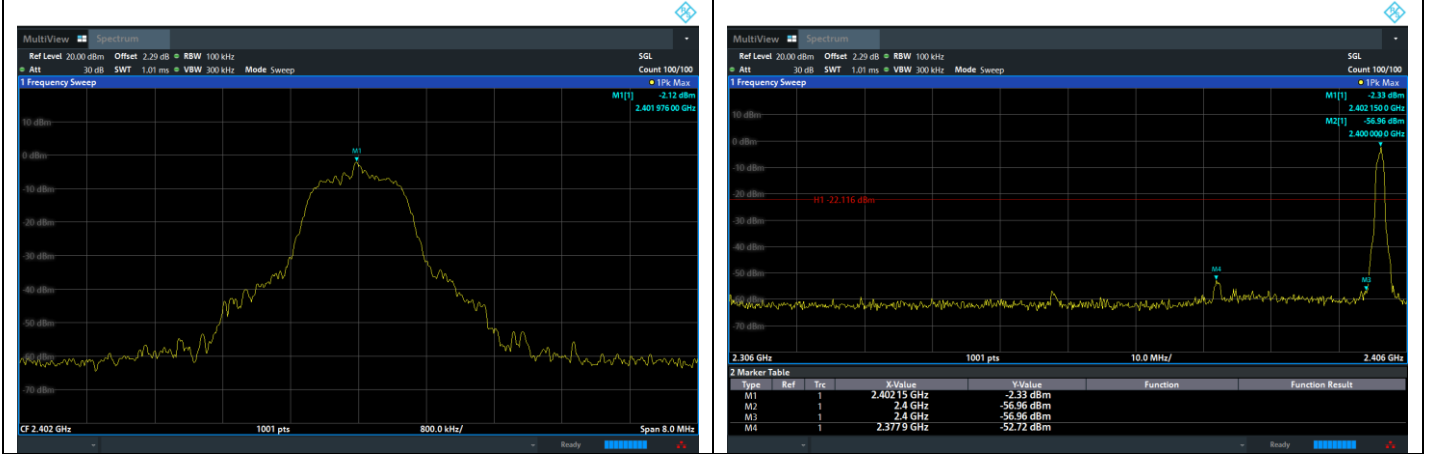
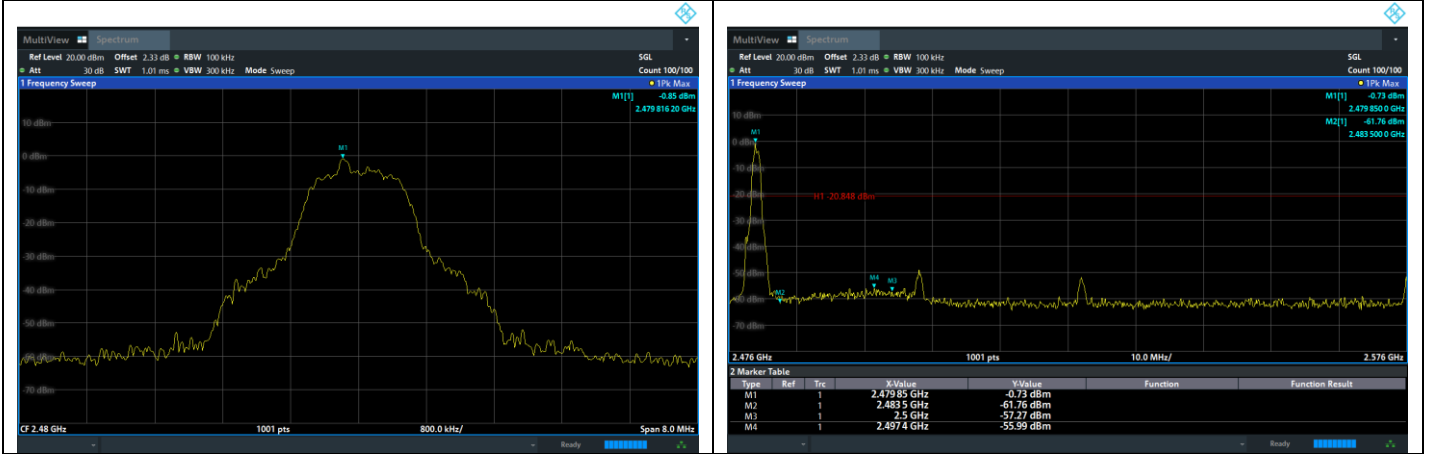


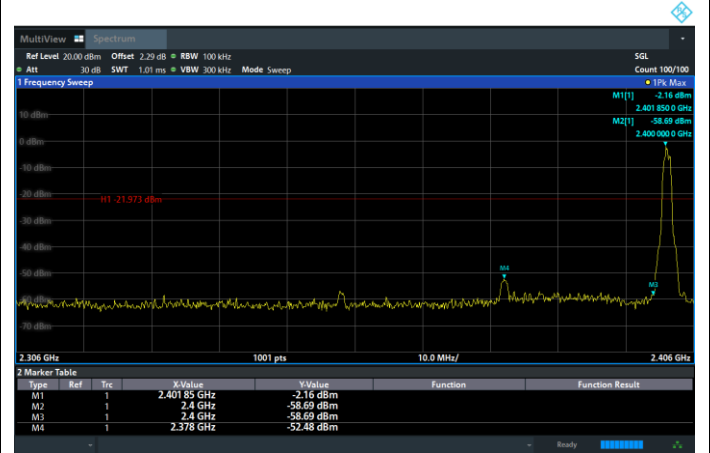
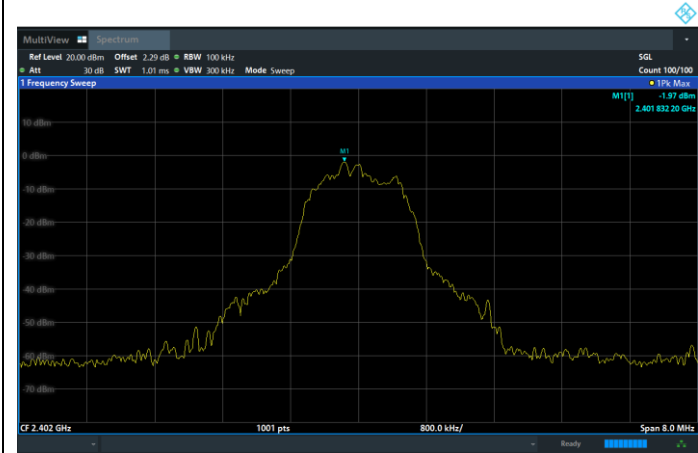
$\pi/4$ -DQPSK: Band Edge, Left Side



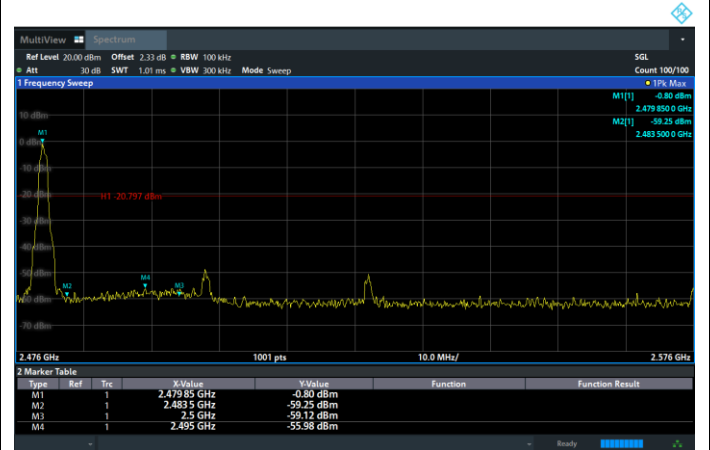
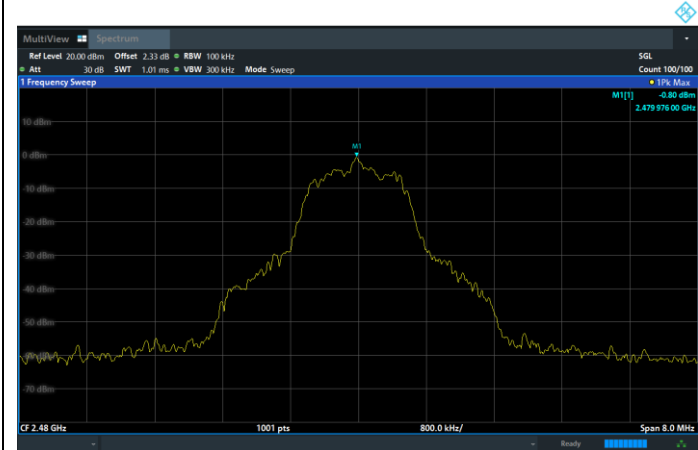
$\pi/4$ -DQPSK: Band Edge, Right Side



8DPSK: Band Edge, Left Side

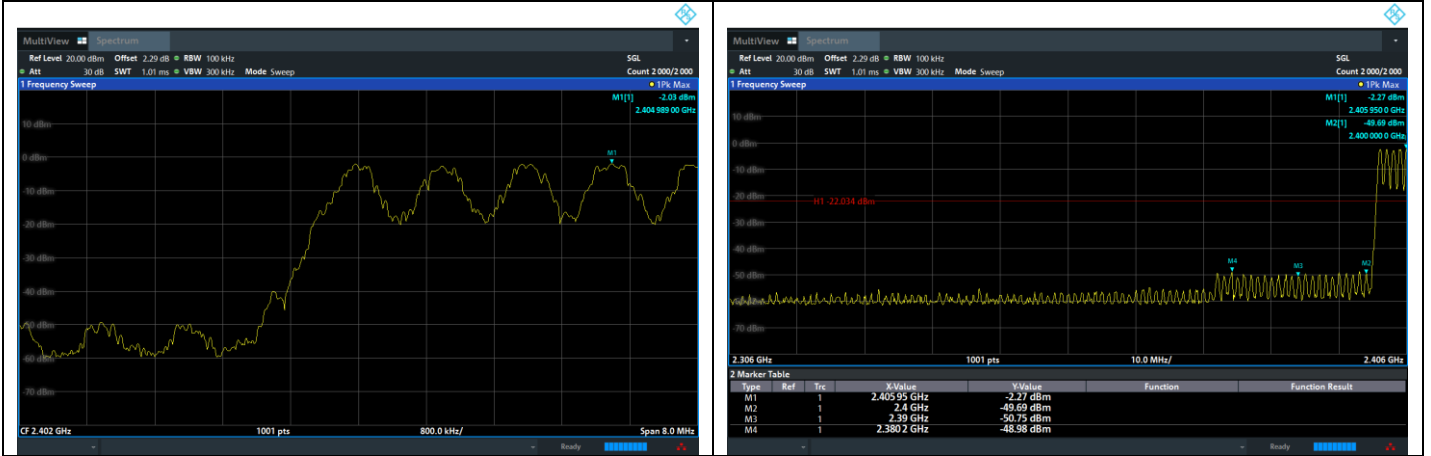


8DPSK: Band Edge, Right Side



Hopping Mode  
Test plots

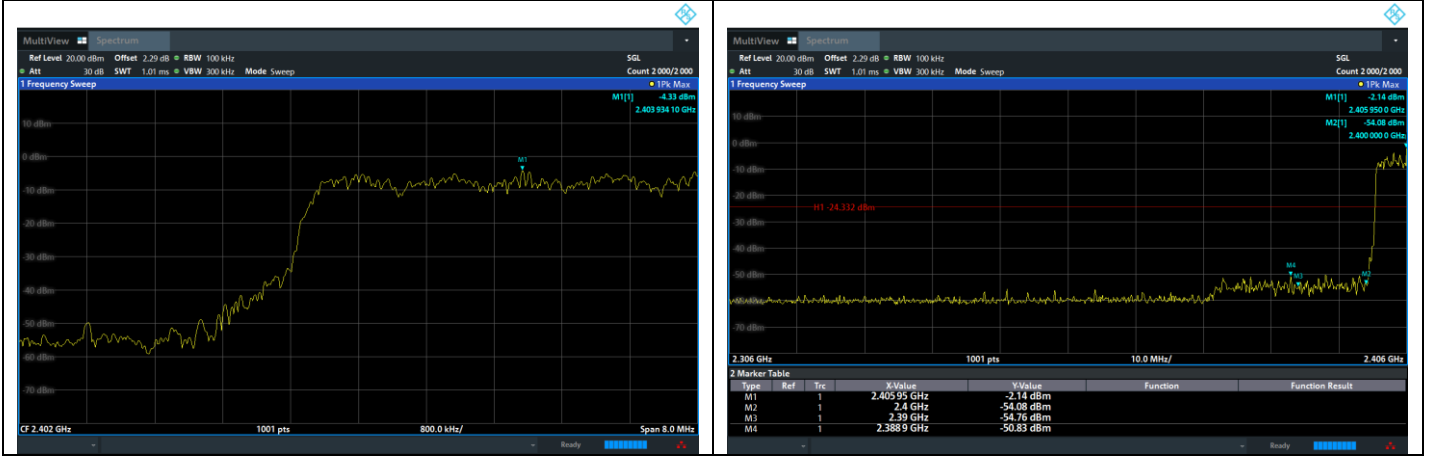
GFSK: Band Edge, Left Side



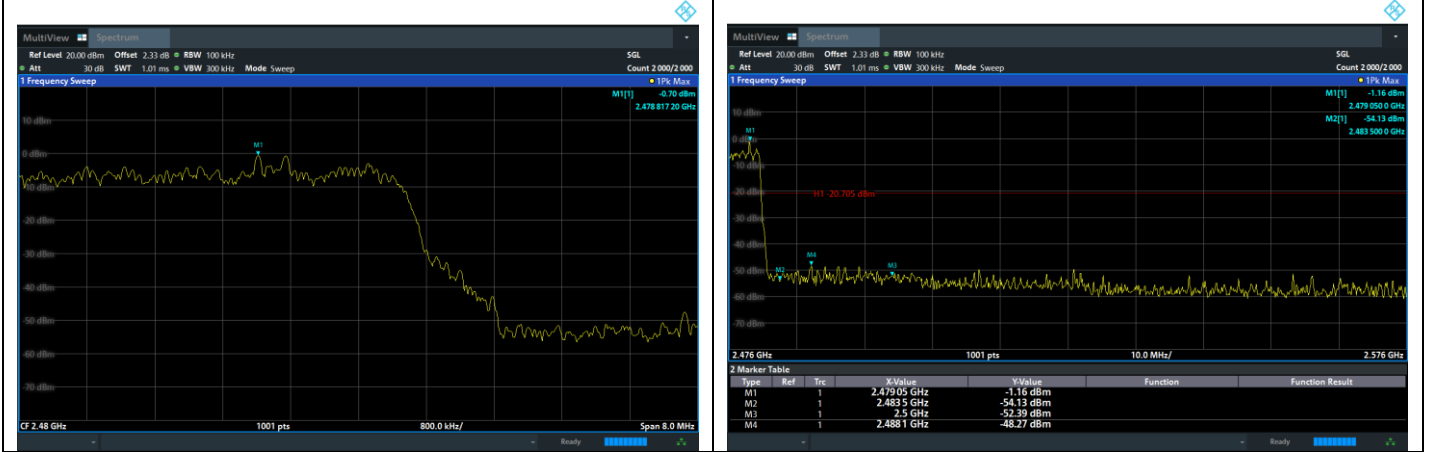
GFSK: Band Edge, Right Side



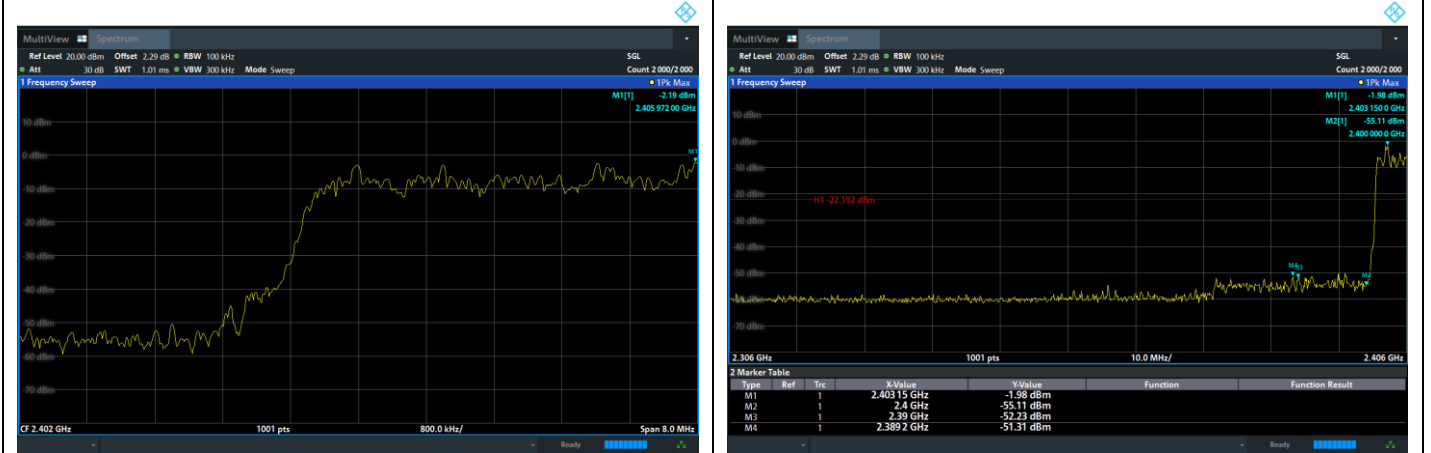
$\pi/4$ -DQPSK: Band Edge, Left Side



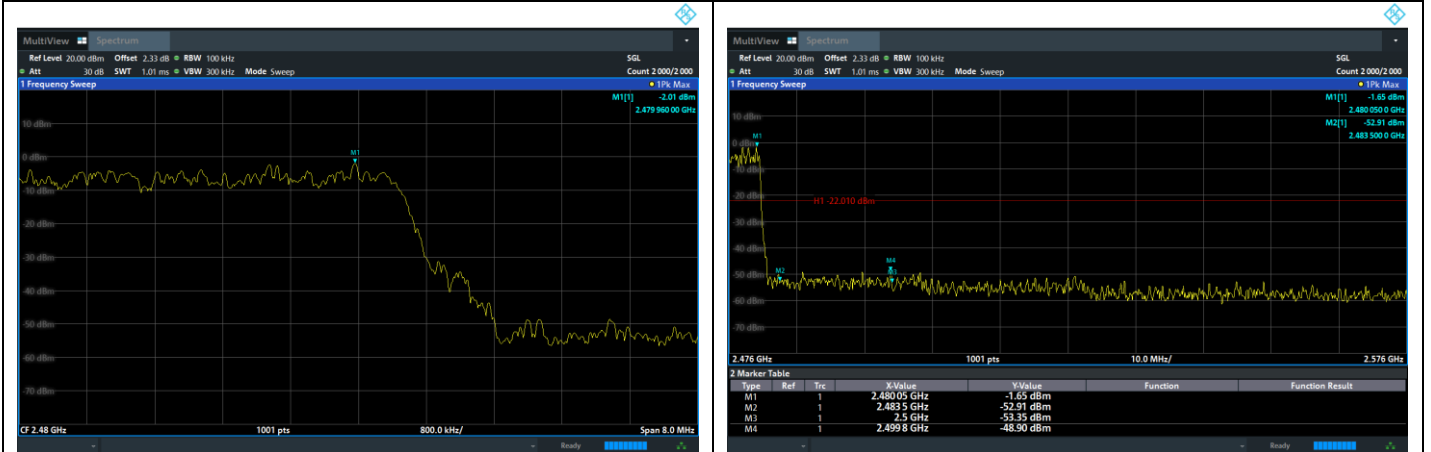
$\pi/4$ -DQPSK: Band Edge, Right Side



8DPSK: Band Edge, Left Side



8DPSK: Band Edge, Right Side



## 5.10 Spurious RF Conducted Emissions

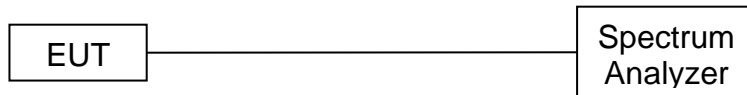
### 5.10.1 Limit

Below -20dB of the highest emission level in operating band.

### 5.10.2 Test Procedure

The Spurious RF conducted emissions compliance of RF radiated emission should be measured by following the guidance in ANSI C63.10-2020 with respect to maximizing the emission by rotating the EUT, measuring the emission while the EUT is situated in three orthogonal planes (if appropriate), adjusting the measurement antenna height and polarization etc. Set RBW=100kHz and VBW=300kHz to measure the peak field strength, and measure frequency range from 9kHz to 26.5GHz.

### 5.10.3 Test Setup



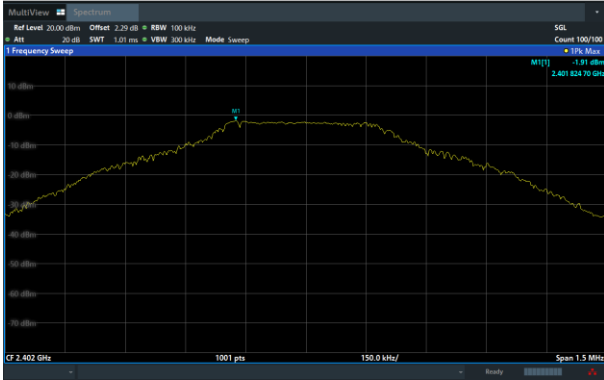
### 5.10.4 Test Results

Note:

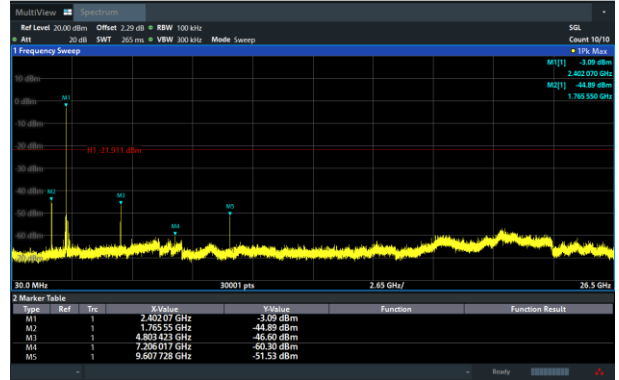
1: The measurement frequency range is from 9kHz to the 10th harmonic of the fundamental frequency. The lowest, middle and highest channels are tested to verify the spurious emissions and band edge measurement data.

2: The worst mode is GFSK mode, and the report only show the worst mode data.

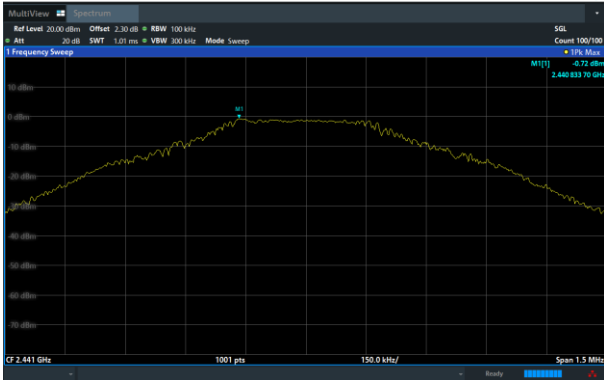
GFSK on Channel 00



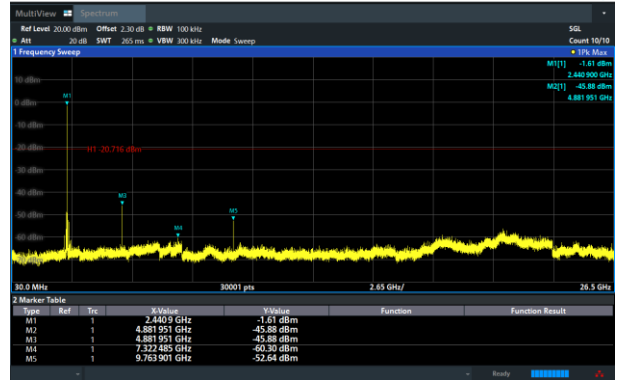
GFSK on Channel 00



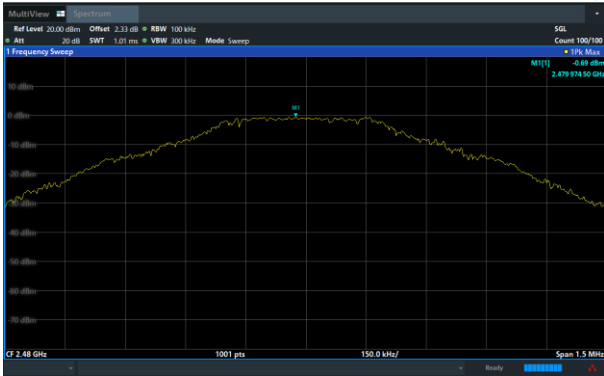
GFSK on Channel 39



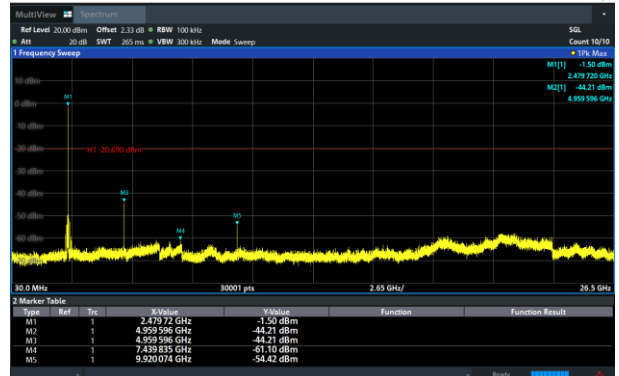
GFSK on Channel 39



GFSK on Channel 78

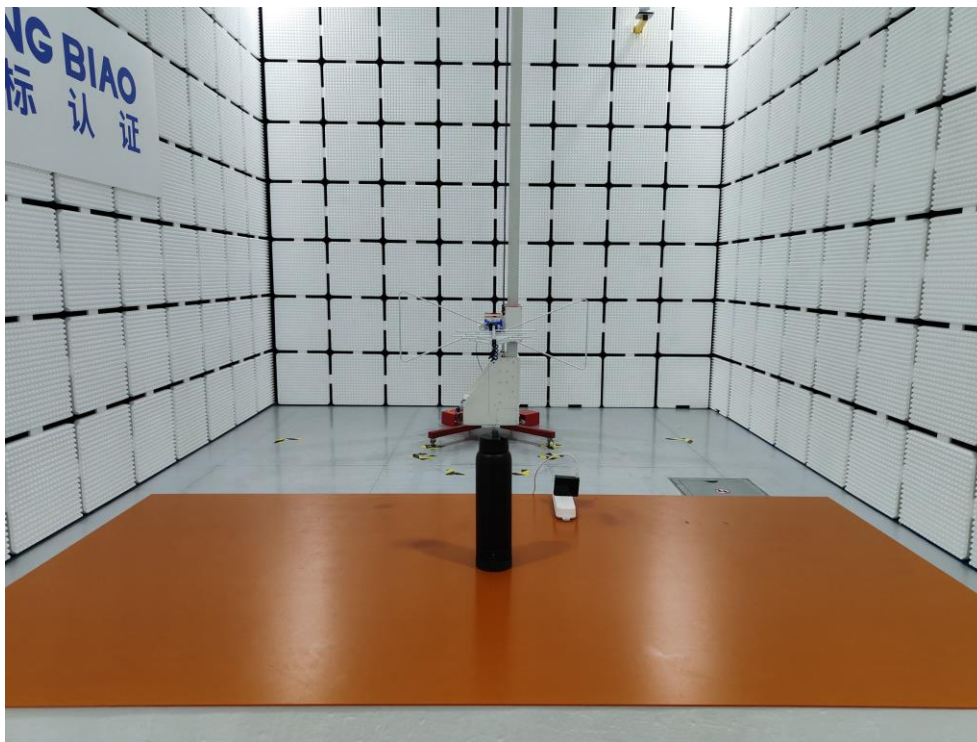


GFSK on Channel 78

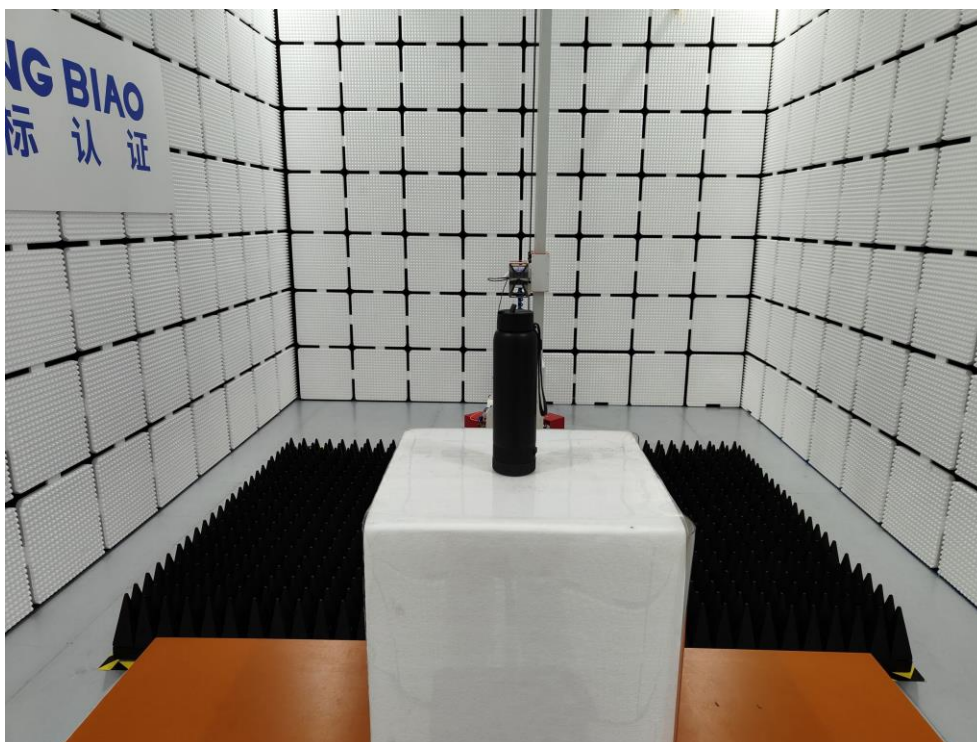


## 6 Photographs of the Test Setup

Radiated Emission Below 1GHz

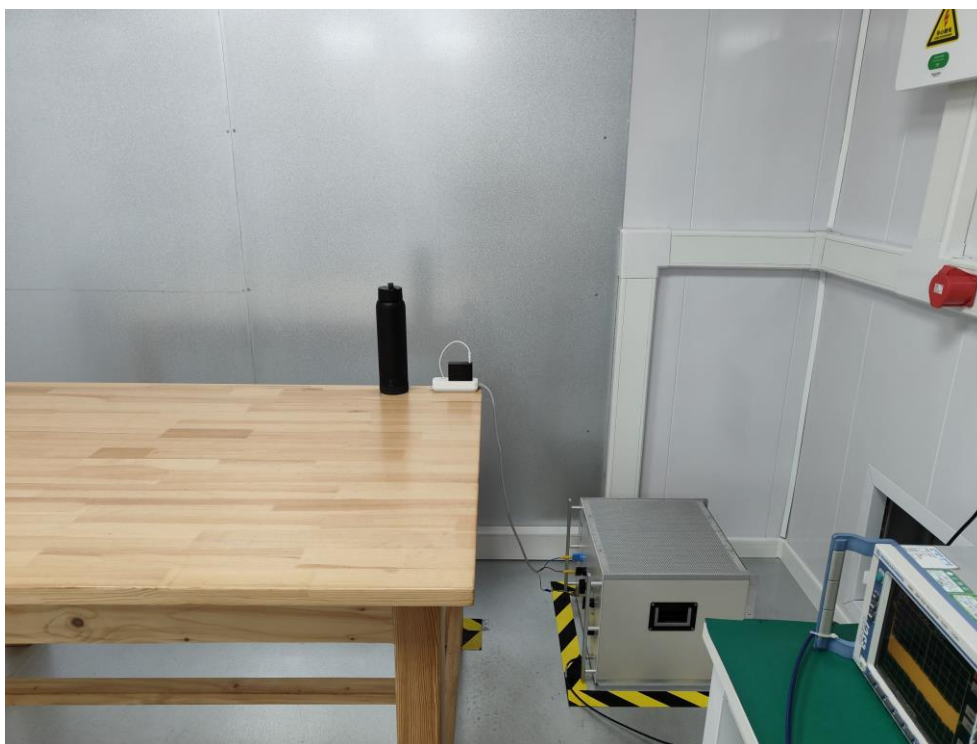


Radiated Emission Above 1GHz





Conducted Emission



## 7 Photographs of the EUT

Photo 1



Photo 2

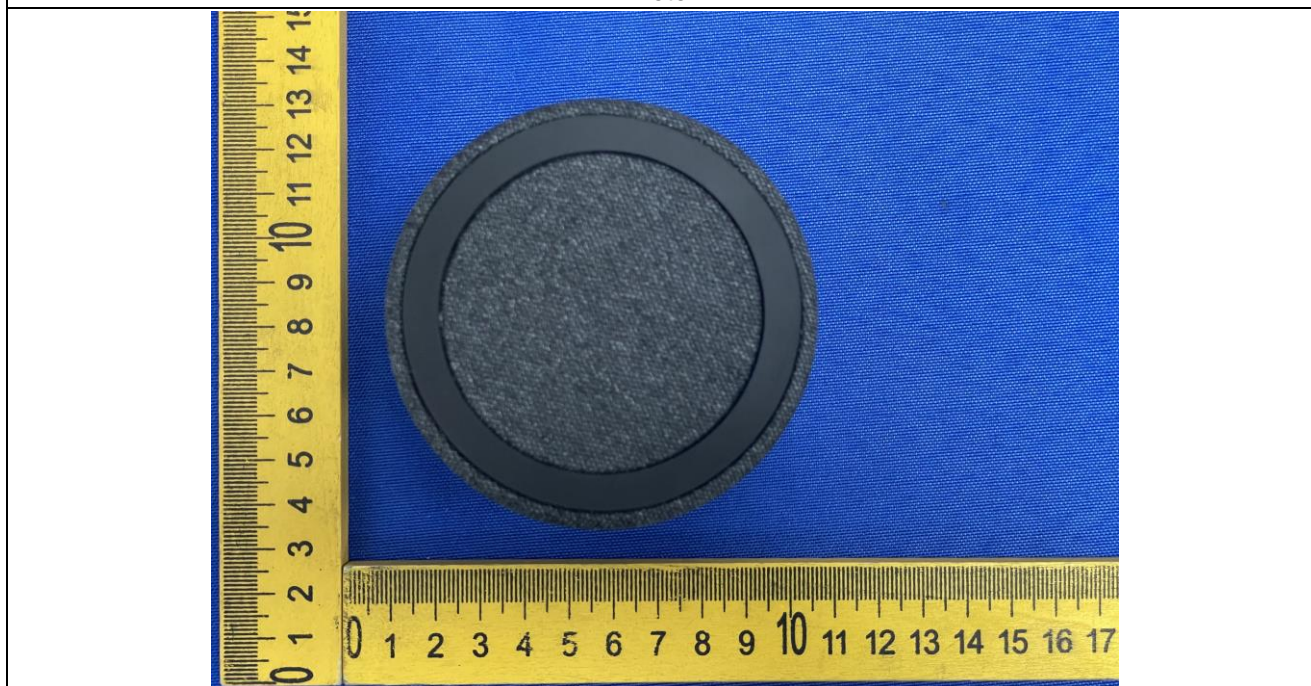


Photo 3

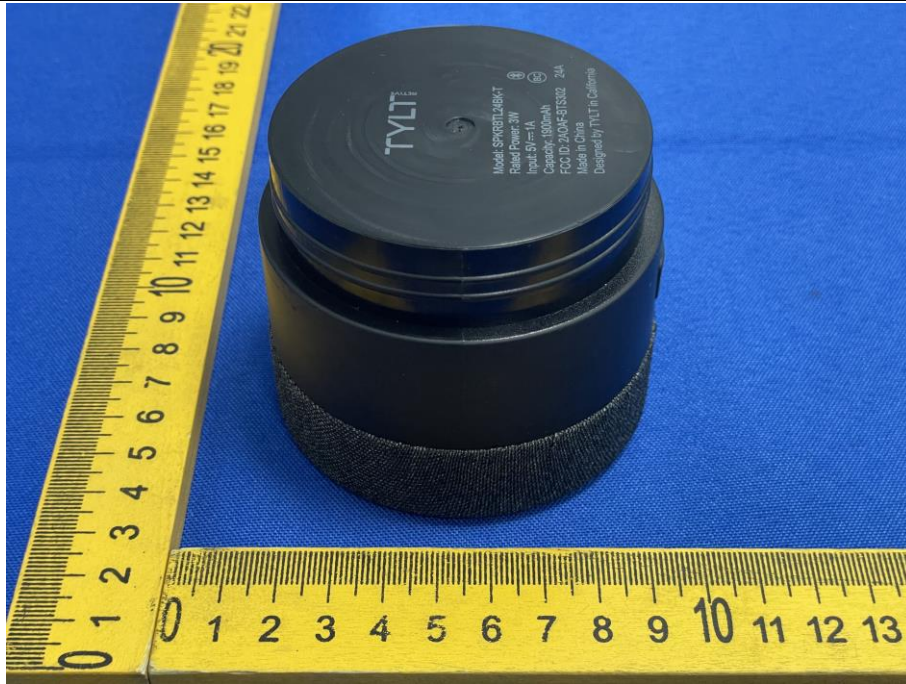


Photo 4



Photo 5



Photo 6



Photo 7



Photo 8

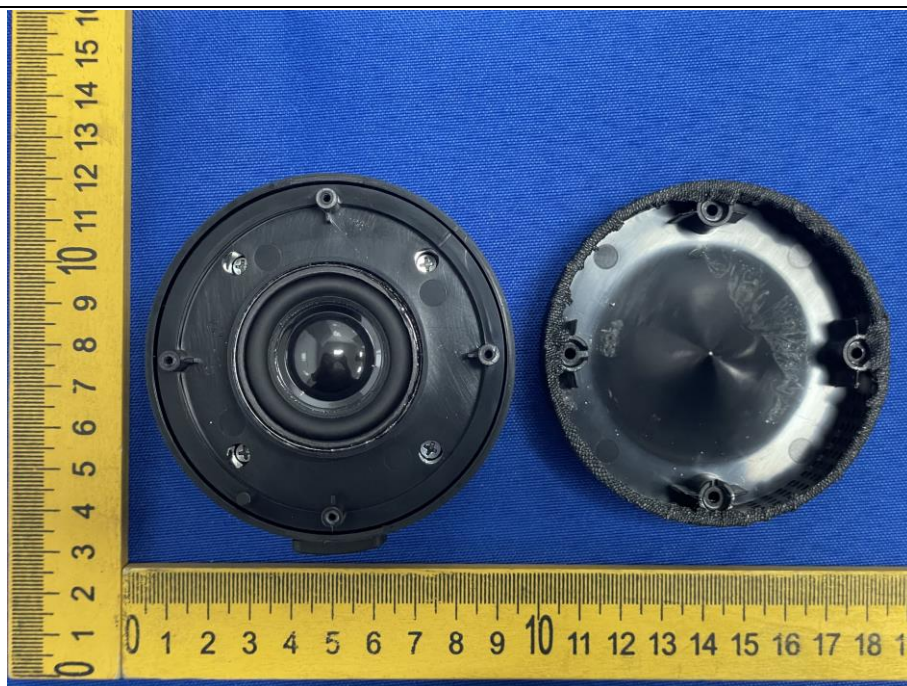


Photo 9

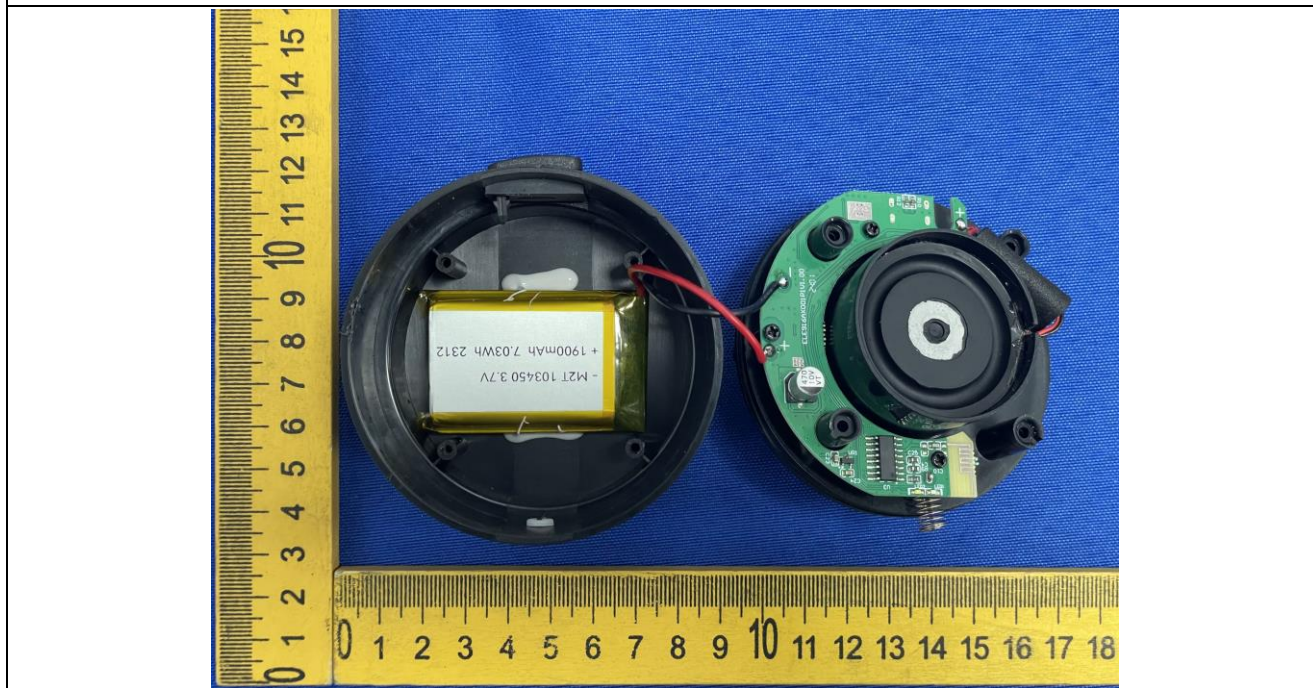


Photo 10

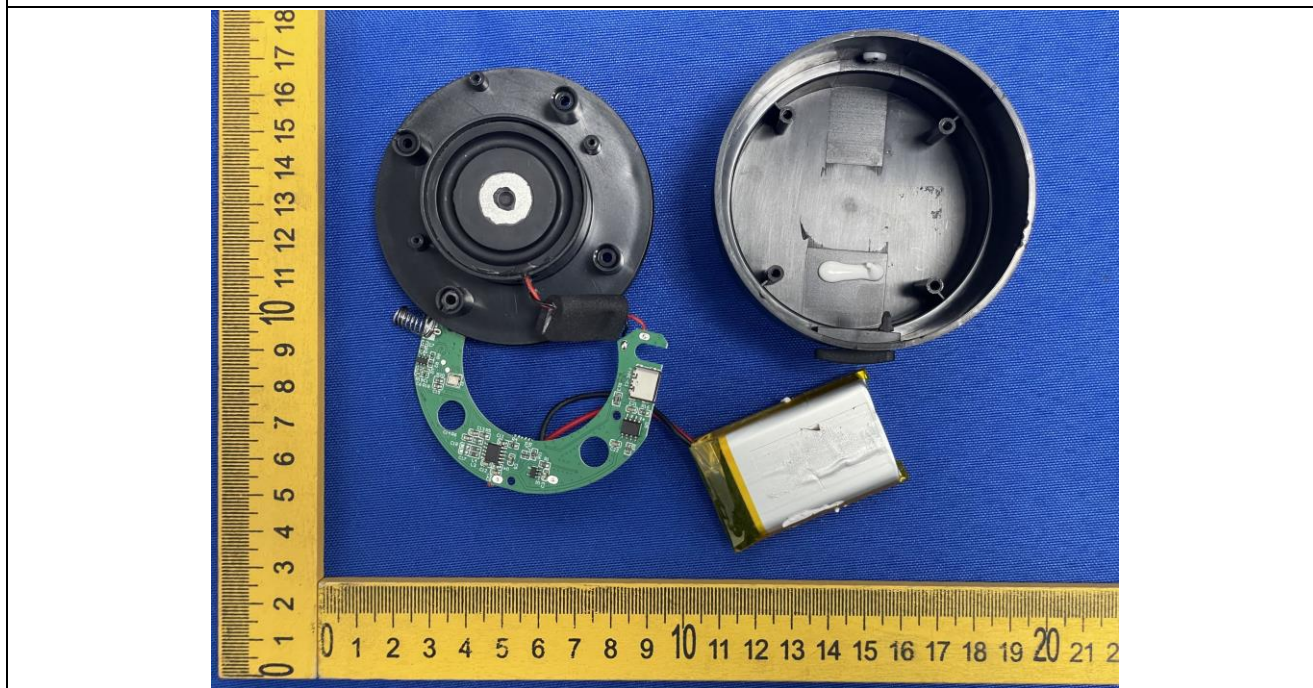
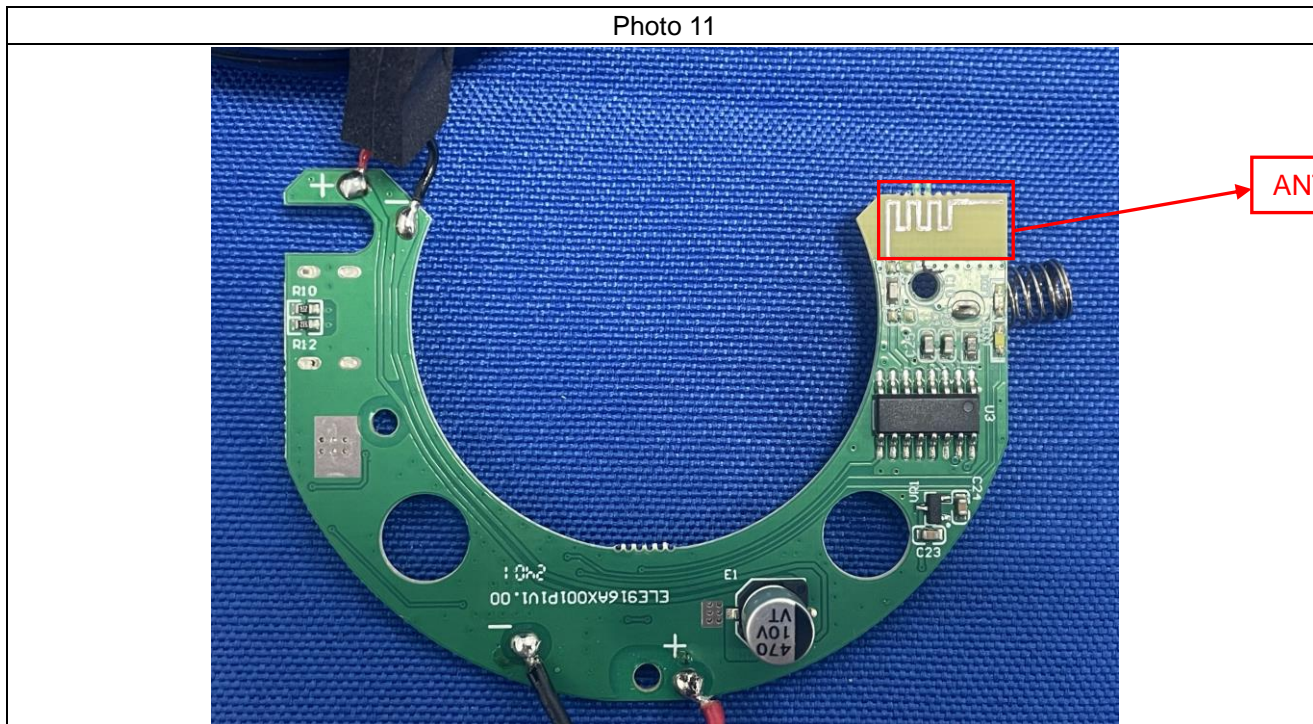


Photo 11



\*\*\*\*\* END OF REPORT \*\*\*\*\*