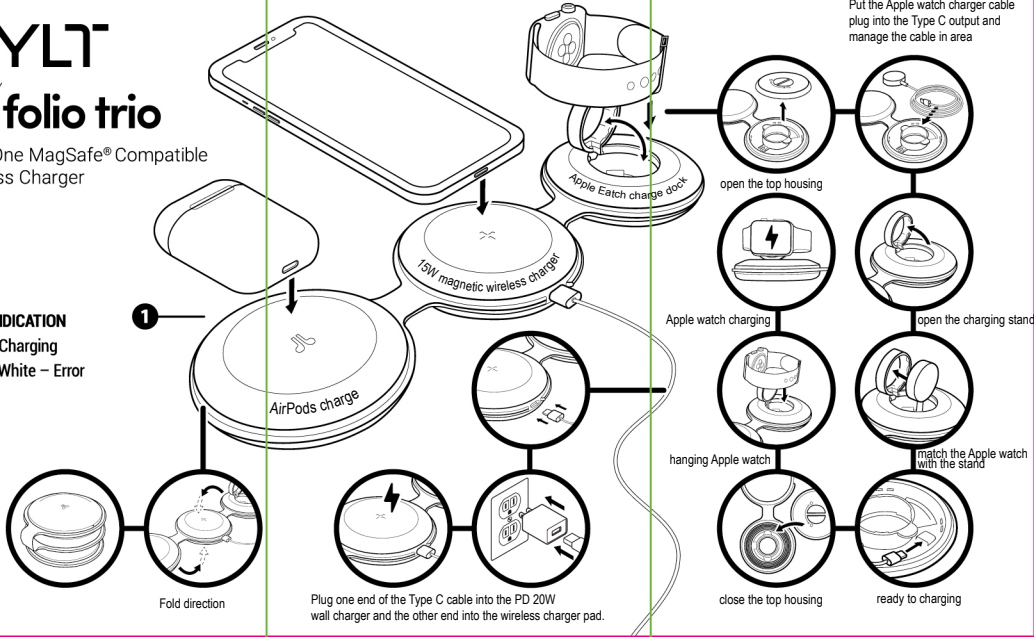


6"

TYLT + folio trio

All-in-One MagSafe® Compatible
Wireless Charger

1
LIGHT INDICATION
White – Charging
Blinking White – Error



3.5"

FCC Radiation Exposure Statement:

This equipment complies with FCC radiation exposure limits set forth for an uncontrolled environment. This equipment should be installed and operated with minimum distance 20cm between the radiator & your body.

FCC Warning

This device complies with Part 18 of the FCC Rules.

Refer to FCC Part 18.213(c) and KDB 784748 Anner A section A.5:

(a)Max. Electric Field Emissions: 6.98V/m

Max. Magnetic Field Emissions: 0.65A/m

(b) The maintenance of the system is the responsibility of the manufacturer.

(c) To prevent interference, the product should be as far away from devices operating at the same frequency as possible.