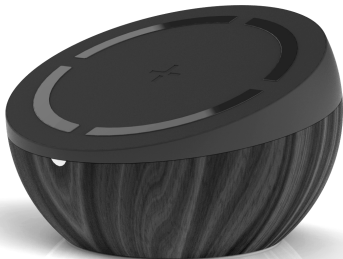


TYLT



QITWSTWD-T

Fast Wireless Charging Pad

User Manual

This is a wireless charging pad that will charge any device that supports the Qi standard, Please read the user manual before using and keep it for future reference.

Standard Accessories:

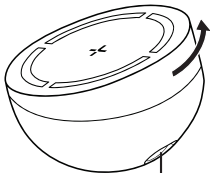
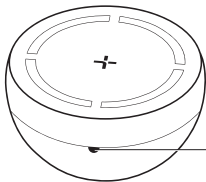
- User Manual
- Wireless Charging Pad

Specifications:

- Input: Standard charging 5V 2A/Fast Charging 9V 1.8A
- Max Output: 10W
- Transmission Power: Standard charging 5W/ Fast Charging 9W
- Wireless Distance: $\leq 6\text{mm}$
- Efficiency: $\geq 72\%$
- Dimensions: $\varnothing 100 \times 50 \text{ mm}$
- Weight: 163g



Wireless Charging Pad + Stand



LIGHT INDICATION
White – On
Red – Error



FCC Statement:

This device complies with part 15 of the FCC Rules. Operation is subject to the following two conditions: (1) This device may not cause harmful interference, and (2) this device must accept any interference received, including interference that may cause undesired operation.

This equipment has been tested and found to comply with the limits for a Class B digital device, pursuant to part 15 of the FCC Rules. These limits are designed to

provide reasonable protection against harmful interference in a residential installation. This equipment generates, uses and can radiate radio frequency energy and, if not installed and used in accordance with the instructions, may cause harmful interference to radio communications. However, there is no guarantee that interference will not occur in a particular installation. If this equipment does cause harmful interference to radio or television reception, which can be determined by turning the equipment off and on, the user is encouraged to try to correct the interference by one or more of the following measures:

- Reorient or relocate the receiving antenna.
- Increase the separation between the equipment and receiver.
- Connect the equipment into an outlet on a circuit different from that to which the receiver is connected.
- Consult the dealer or an experienced radio/TV technician for help.

Caution: Any changes or modifications not expressly approved by the party responsible for compliance could void the user's authority to operate the equipment.

MAILING ADDRESS 685 Cochran Street
Suite #200
Simi Valley, CA 93065



EMAIL Customer Service: customerservice@TYLT.com
Press: press@TYLT.com