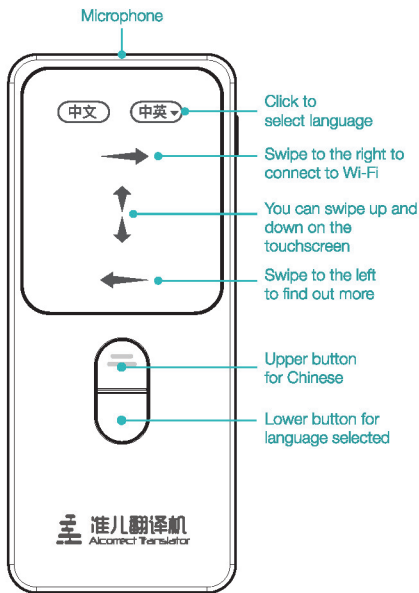
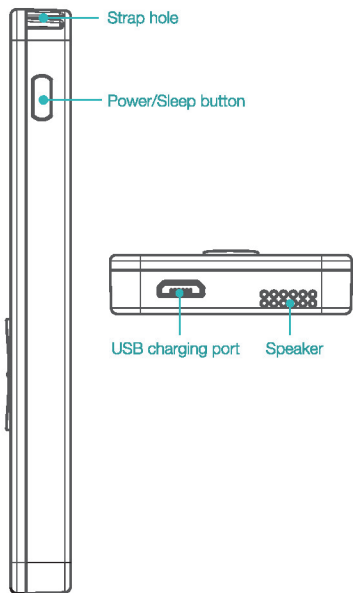


# Diagram



# Diagram



# Quick Start

## Power on/off

Long press on Power/Sleep button for 2 sec to power the device on or off.

## Standby

Short press on Power/Sleep button to wake the device or put it to sleep.

## Forced Shutdown

Long press on Power/Sleep button for over 10 sec to force the device to power off.

## Menu on touchscreen

Swipe to the left/right for more functionality menus; swipe up and down to see more content.

## Connect to Wi-Fi

Swipe to the right to enter **Utilities** menu, click **Wi-Fi Setup** to search for available Wi-Fi (if not found, try swiping up and clicking **Touch to search for more...**) Click on the Wi-Fi you feel like connecting to, type in the password and hit **OK**.

## Select language

In the Translation screen (main screen), click the drop-down menu on the top-right corner to select the language to translate from/to.

NOTE: In the language list, languages in orange are the ones with the highest accuracy, green with moderate accuracy; languages in blue are supported in beta and will be improved in near future. With regard to accents, certain languages are deliberately divided into different accent variations, for instance, if in UK, it is suggested that British English be selected and Standard British English be spoken, so as to ensure the accuracy in terms of translation.

## Intelligent translation

Press and hold the Upper/Lower Language button and an alert will be heard; start talking after the alert. Once finished, release the button and translation will be carried out within seconds.

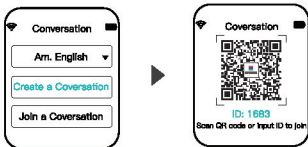
NOTE: This function requires active Wi-Fi connectivity with the speed no less than 3G. If the network is poor, the translation would take more time or even fail. Currently, some of portable Wi-Fi plans or cellular data plans have rather strict policy on data, e.g. after using 300 or 500 MB, the rate would drop to 2G, which fails to meet the requirement.

## Offline expressions

Can be used as a complementary tool when there is no available Wi-Fi. Click on the corresponding sentence to hear the pronunciation.

# Conversation Across Devices

Swipe to the left to enter the **Conversation** screen. Select the language the device is going to use, click **Create a Conversation** and the ID, QR code for the current chatroom will be shown.



**Connect to smartphones:** Open Alcorrect APP on a smartphone, click the **Conversation** icon on the top-right corner, scan the QR code or type in the ID of the chatroom to join the conversation.

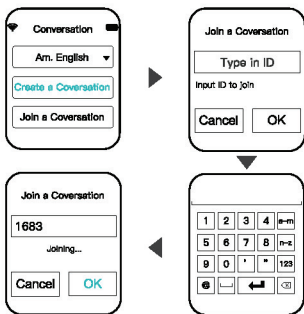


Conversation icon



Scan QR code or type in ID

**Connect to other Alcorrect Translators:** Enter the Conversation screen on the other device, click **Join a Conversation** after selecting the language, type in the corresponding ID and hit **OK** to join.



**Connect to more devices:** When in a conversation, click **Invite** on the top to review the QR code or ID, go through the procedures above to connect to other devices.



**NOTE:** When a conversation is set up, the Upper button functions the same as the Lower one. Moreover, Conversation not only can occur across devices nearby, but also across devices from all over the globe, as long as they are connected to the network.

# Notices

1. When updating the device, after the package is 100% downloaded, the installation will take about 2 min (nothing will show on the screen), during which any operations should be avoided.
2. Intelligent translation requires active Wi-Fi connectivity, with network rate no less than 3G, otherwise the translation process would be more time-consuming or even fail.
3. While using intelligent translation, please start talking after the alert, and do not release the button until you finish, so as to make sure the sound input is complete.
4. While talking, keep your mouth no farther than 10 cm away from the microphone, otherwise it might influence the result.
5. Please speak standard Mandarin Chinese as the device can only recognize it for now.
6. Please make your utterance no more than 15 sec at a time.
7. Please speak at a moderate, consistent rate. Do not pause when unnecessary, or blend two sentences into one, in case the translation is influenced.
8. Try not to use pet phrases or local slangs.
9. The transcription on the touchscreen can be used to help to check on what has just been said.
10. If the transcription is correct while the translation is off, try paraphrasing what has just been said.

# Specifications

Appearance	Length	94.75mm
	Width	40.00mm
	Height	9.75mm
Hardware	Screen size	1.54in
	Touchscreen	IPS capacitive touchscreen
	Processor	MT2523D
	Wi-Fi chip	CC3200
	Storage	4GB
Battery	Capacity	700mAh
	Standby time	96h
	Working time	2.5h
	Charging adapter	5V 1A or 5V 2A
Environment	Temperature	-20°C~50°C
	Humidity	≤70%rh

## Cautions

- If not properly handled, changing a battery might put you at risk to possible explosion. A battery can only be replaced with identical models or ones with equivalent specs. Avoid direct sunlight or scorching heat.
- It is suggested that this device not be used alone by children under 14, unless with parental guidance.



# Disclaimer

Please read the instructions carefully before using the device. Check [www.aibabel.com](http://www.aibabel.com) for detailed instructions.

- We will not be held responsible for the translation result.
- Avoid using the device in an environment that is hot, humid, or filled with inflammable gas.
- This device is not water-resistant or splash-proof. Please avoid contact with water.
- It is suggested that children under 14 use the device under adult supervision.

## Technical Support



- Scan QR code to download Alcorrect Translate (准儿翻译) app for iOS.
- For Alcorrect Translate app for Android: Head to app stores such as Tencent, 360, MI, Huawei and Baidu, search for “准儿翻译” to download the app for free.



Official Account

- Follow our Office Account to get more information and technical support.

# Common Malfunctions

## 1. Too much responding time or no responding while translating.

- Make sure the device is connected to the internet (an active Wi-Fi or personal hotspot will do).
- Make sure the network, broadband or cellular, offers a rate no less than 3G.

NOTE: Currently, most portable Wi-Fi devices and cellular data plans designed for overseas travelers have a speed restriction: when daily traffic reaches 300MB or 500MB, the rate would drop to 2G.

## 2. Transcription errors.

- Please press and hold the corresponding button, after hearing the alert, start talking; do not release the button until you finish.
- Make sure the network, broadband or cellular, offers a rate no less than 3G.
- Get closer to the microphone.
- Please speak standard Mandarin Chinese. Avoid using non-standard dialects or slangy expressions.
- If the environment is noisy, please try speaking in a louder voice and getting closer to the microphone.
- Please speak in a natural and consistent tone. Avoid blending several sentences into one.

## 3. Failure to connect to Wi-Fi

- Go through the right procedures to connect the

# Common Malfunctions

device to the Wi-Fi. Make sure you enter the correct password.

- Currently, the device does not support Wi-Fi hotspots that need web-based authentication.

## 4. Crash/Freeze

- Long press Power/Sleep button for 10 sec and force the device to shut down.

## Manufacturer Information

Name: Beijing Babel Technology, Co., Ltd.

Address: Block C I-M-Way, 45 Chengfu Rd., Haidian District, Beijing 100083, CHINA

## Trader Information

# FCC WARNING

Any changes or modifications not expressly approved by the party responsible for compliance could void the user's authority to operate the equipment.

Note: This equipment has been tested and found to comply with the limits for a Class B digital device, pursuant to part 15 of the FCC Rules. These limits are designed to provide reasonable protection against harmful interference in a residential installation. This equipment generates uses and can radiate radio frequency energy and, if not installed and used in accordance with the instructions, may cause harmful interference to radio communications. However, there is no guarantee that interference will not occur in a particular installation. If this equipment does cause harmful interference to radio or television reception, which can be determined by turning the equipment off and on, the user is encouraged to try to correct the interference by one or more of the following measures:

- Reorient or relocate the receiving antenna.
- Increase the separation between the equipment and receiver.
- Connect the equipment into an outlet on a circuit different from that to which the receiver is connected.
- Consult the dealer or an experienced radio/TV technician for help.

THIS DEVICE COMPLIES WITH PART 15 OF THE FCC RULES. OPERATION IS SUBJECT TO THE FOLLOWING TWO CONDITIONS: (1) THIS DEVICE MAY NOT CAUSE HARMFUL INTERFERENCE. (2) THIS DEVICE MUST ACCEPT ANY INTERFERENCE RECEIVED, INCLUDING INTERFERENCE THAT MAY CAUSE UNDESIRE OPERATION

The device has been evaluated to meet general RF exposure requirement. The device can be used in portable exposure condition without restriction.

# Warranty Card

Product name: Alcorrect Translator

Model: PE01

Name: \_\_\_\_\_

Contact: \_\_\_\_\_

Address: \_\_\_\_\_

1. Maintenance content: \_\_\_\_\_

After-sales service: \_\_\_\_\_

Client's signature: \_\_\_\_\_

☐ Satisfied      ☐ Unsatisfied

2. Maintenance content: \_\_\_\_\_

After-sales service: \_\_\_\_\_

Client's signature: \_\_\_\_\_

☐ Satisfied      ☐ Unsatisfied

# Warranty Policy

1. A one-year limited warranty is provided for this device.
2. During the maintenance period, if properly used according to the guidance of instructions (decided by Customer Service representatives), the device can be repaired free of charge.
3. During the maintenance period, the following situations are not covered by free guarantee.
  - a. Could not offer this warranty card or valid proof of purchase.
  - b. Damage done by misemployment or unauthorized repairs/modifications.
  - c. Damage done by accidental fall during transport.
  - d. Other damage done due to unavoidable external factors.
  - e. Damage done by water or other solutions.
  - f. Damage done by non-standard charging power or voltage.
4. We take responsibility for nothing other than what is mentioned above, be it indicated or implied (including merchantability and implied guarantee on certain applicational rationality and adaptability). No matter it is on the contract, as a matter of civil negligence or in other regards, we will not be held responsible for any peculiar, accidental or indirect damage.