

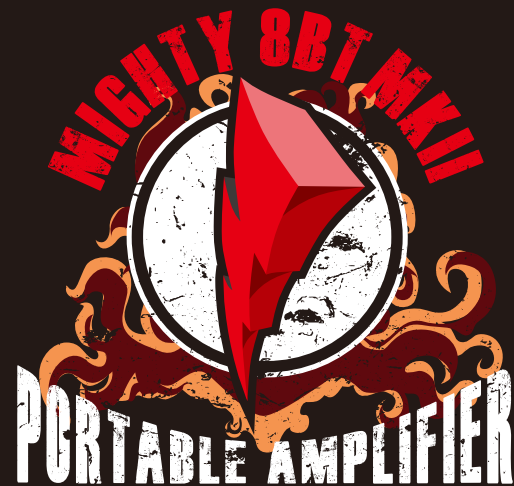


©2023 Cherub Technology-All rights reserved. No part of this publication may be reproduced in any form without prior written permission of Cherub Technology.

www.nuxefx.com

Made in China

NUX



MIGHTY MKII

TS/AC HD
WHITE-BOX AMP
MODELING ALGORITHM

New Generation Amp

Owner's manual

**8 WATTS
6.5 FRFR
7 PRESETS
DRUM MACHINE**

WARNING

To reduce the risk of fire or electric shock, do not expose this appliance to rain or moisture.

CAUTION

This device complies with part 15 of the FCC Rules. Operation is subject to the following two conditions: (1) this device may not cause harmful interference, and (2) this device must accept any interference received, including interference that may cause undesired operation. Any changes or modifications not expressly approved by the party responsible for compliance could void the user's authority to operate the equipment.

NOTE: This equipment has been tested and found to comply with the limits for a Class B digital device, pursuant to Part 15 of the FCC Rules. These limits are designed to provide reasonable protection against harmful interference in a residential installation. This equipment generates, uses and can radiate radio frequency energy and, if not installed and used in accordance with the instructions, may cause harmful interference to radio communications. However, there is no guarantee that interference will not occur in a particular installation.

If this equipment does cause harmful interference to radio or television reception, which can be determined by turning the equipment off and on, the user is encouraged to try to correct the interference by one or more of the following measures:

- Reorient or relocate the receiving antenna.
- Increase the separation between the equipment and receiver.
- Connect the equipment into an outlet on a circuit different from that to which the receiver is connected.
- Consult the dealer or an experienced radio/TV technician for help.

The device has been evaluated to meet general RF exposure requirement.

This equipment should be installed and operated with minimum distance 20cm between the radiator &you body.

WARNING

To reduce the risk of fire or electric shock, do not expose this appliance to rain or moisture.

CAUTION

This device complies with part 15 of the FCC Rules. Operation is subject to the following two conditions: (1) this device may not cause harmful interference, and (2) this device must accept any interference received, including interference that may cause undesired operation. Any changes or modifications not expressly approved by the party responsible for compliance could void the user's authority to operate the equipment.

NOTE: This equipment has been tested and found to comply with the limits for a Class B digital device, pursuant to Part 15 of the FCC Rules. These limits are designed to provide reasonable protection against harmful interference in a residential installation. This equipment generates, uses and can radiate radio frequency energy and, if not installed and used in accordance with the instructions, may cause harmful interference to radio communications. However, there is no guarantee that interference will not occur in a particular installation.

If this equipment does cause harmful interference to radio or television reception, which can be determined by turning the equipment off and on, the user is encouraged to try to correct the interference by one or more of the following measures:

- Reorient or relocate the receiving antenna.
- Increase the separation between the equipment and receiver.
- Connect the equipment into an outlet on a circuit different from that to which the receiver is connected.
- Consult the dealer or an experienced radio/TV technician for help.

The device has been evaluated to meet general RF exposure requirement. The device can be used in portable exposure condition without restriction.



The lightning symbol within a triangle means, "Electrical caution!" It indicates the presence of information about operating voltage and potential risks of electrical shock.



The exclamation point within a triangle means, "Caution!" Please read the information next to all caution signs.

Introduction

Thank you for purchasing the NUX MIGHTY 8BT MKII. The brand new MIGHTY 8BT MKII includes a 6.5" FRFR speaker with IR technology, offering you limitless tonal possibilities. By using 8 x AA batteries, this portable amp will let you busk anywhere for up to 8 hours..

The MIGHTY 8BT MKII provides a variety of effects for electric guitar and bass guitar including amp modeling and cabinet IRs. It also comes with acoustic amp modeling and acoustic IRs to let you simulate acoustic guitar tones.

There's even an additional channel on the amp to plug in a dynamic mic, making it a great solution for live performances.

Editing and saving your presets can be done in the studio or on the go with the MightyAmp App for your smart device (iOS/Android) or Mighty Editor™ software (Mac/PC). And you can even load 3rd party IRs through the Mighty Editor™ edit software to expand your tone. (You can load any WAV format IRs, the Mighty Editor™ will convert to 32bits/48kHz onto the device automatically.)

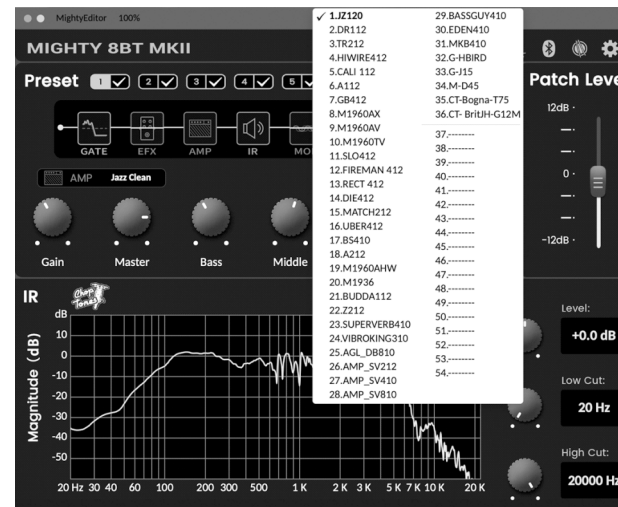
Download on the
App Store



GET IT ON
Google Play



Mighty Editor™



Note: There are 36 default IRs, and user IR slots are 18 (from 37 to 54).

MightyAmp



The MightyAmp™ APP and Mighty Editor™ edit software lets you tweak all the signal blocks and parameters. The MIGHTY 8BT MKII includes GATE, EFX, AMP, IR, MOD, DLY and RVB signal blocks.

The MIGHTY 8BT MKII supports USB-C audio stream, meaning that it can be an USB recording interface. It supports Normal / Dry Out / Re-amp / Loopback routing, which can be adjusted via the MightyAmp™ APP or Mighty Editor™ edit software even live stream jamming with Loopback! (Loopback signal includes PC's playback, Bluetooth audio, AUX IN signals.) Use the OTG adaptor, you can use the mobile phone to do livestreaming!

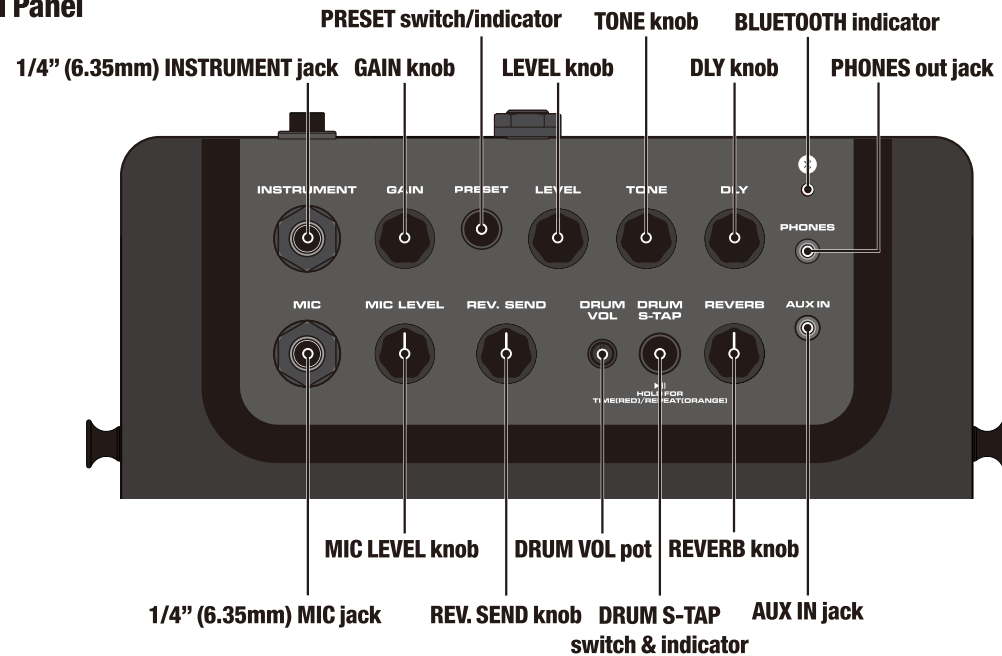
Note: Be sure to download the NUX ASIO Driver from the NUX website prior to using the MIGHTY 8BT MKII as a recording interface if you're on a PC. If you're a Mac user, it's plug and play.

For iOS devices, please use the original APPLE® Lightning to USB OTG adaptor.



**All of the brand and model names mentioned on this page are Trademarks of their respective owners, which are in no way associated or affiliated with NUX Effects and Cherub Technology CO. LTD.*

● Control Panel

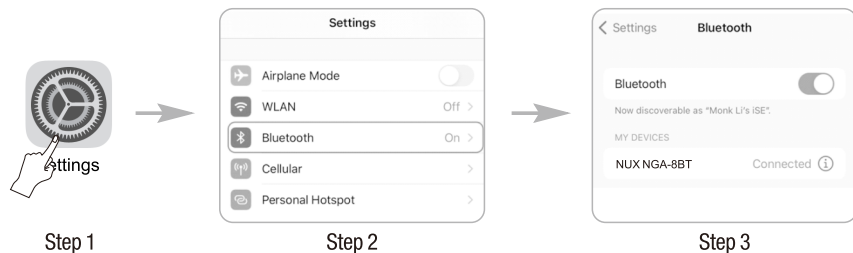


BLUETOOTH indicator



When connecting a Bluetooth enabled mobile device to the MIGHTY 8BT MKII's Bluetooth audio, the BLUETOOTH indicator will turn on "Blue". (If not connected, the BLUETOOTH indicator will flash "Blue".)

Operation: Do the following to play audio through the MIGHTY 8BT MKII via Bluetooth. Click "Settings" on your mobile device. Enter "Bluetooth", and choose "NUX NGA-8BT". Once connected to the MIGHTY 8BT MKII's Bluetooth audio, you will hear a connection sound.



If you wish to disconnect the MIGHTY 8BT MKII, just press and hold the PRESET button/indicator to disconnect. Then you can connect to MIGHTY 8BT MKII manually.

Note: The Bluetooth audio and Bluetooth MIDI are independent, you have to connect them separately. Both of these connections must be made in order to use the MIGHTY 8BT MKII's full functionality. Keep reading to complete this process.

MightyAmp™ APP connects with the device.

Operation: Launch the MightyAmp™ APP on your mobile phone, and press "Settings" to choose "Current Amp" as "MIGHTY 8BT MKII", then "Click to Scan Devices". The APP will find "MIGHTY 8BT MKII". Now select it, and the APP will connect with the device.

Note: The APP uses Bluetooth MIDI to communicate with the device.

Note: For Android OS, you may need to turn on GPS permission. **PRIVACY NOTE:** We do not use your GPS to track you. Where you want to play music is your business, not ours!

Applications that scan for Bluetooth devices must request permission in the manifest file. This LOCATION permission is required because it may be possible to guess the location of an Android device by seeing which BTLE devices are nearby.

https://developer.android.com/reference/android/media/midi/package-summary#btle_location_permissions



1/4" (6.35mm) INSTRUMENT jack

INSTRUMENT



Connect your cable with instrument into INSTRUMENT jack. (You can use a guitar, a bass, an electric acoustic guitar, ...etc.)

GAIN knob LEVEL knob TONE knob PRESET switch/indicator

GAIN



GAIN knob
Controls AMP model's gain.

LEVEL



LEVEL knob
LEVEL knob controls AMP model's master volume.

TONE



TONE knob
TONE knob controls AMP model's Presence / Bright switch / Tone.

PRESET



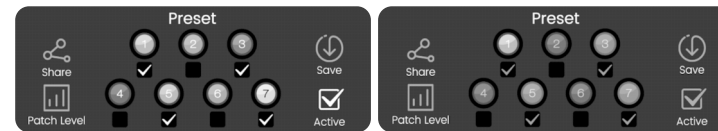
PRESET switch/indicator

While the device is engaged, you can press the PRESET switch to change the preset from 1~7. The indicator will display colors related to specific presets.

Note: You can adjust which preset can be ACTIVE while you press the PRESET switch through MightyAmp™ APP or Mighty Editor™ edit software. (ACTIVE function)

MightyAmp™ APP example

Choose preset 1, 3, 5, 7 and press Active icon, then the device will know preset 1, 3, 5, 7 will be chosen while you press the PRESET switch.



Mighty Editor™ example

Click icon, the 7 PRESETS will be COLORED, then choose the ones you want to active, like 1, 3, 5, 7. Then press icon again, Mighty Editor™ will show current preset, and according to the interface, you will see which is be chosen with .



1/4" (6.35mm) MIC jack MIC LEVEL knob REV. SEND knob

MIC



1/4" MIC jack
Connect with dynamic microphone.

MIC LEVEL



MIC LEVEL knob
Adjust the dynamic microphone input level.

REV. SEND



REV. SEND knob
Adjust the REVERB mix level related to RVB block.

REVERB knob

REVERB



Controls RVB block (REVERB) mix level.

DLY knob

DLY



Regularly controls Delay's mix level. Press DRUM S-TAP switch to change indicator's color can Alt tweak DLY knob as TIME(RED) or REPEAT(ORANGE).

DRUM VOL pot

DRUM
VOL



Controls the drum machine volume.

DRUM S-TAP switch & indicator

DRUM
S-TAP



▶||
HOLD FOR
TIME(RED)/REPEAT(ORANGE)

Press it to start / stop the drum machine. The Smart Tap Tempo adjusts the drum tempo. While the drum machine plays back, the indicator will flash "GREEN" in time with the drum BPM. To set a new tempo, simply tap this switch in succession to the desired tempo. This switch also includes a secondary function specific to the DLY block. Press and Hold the switch to change the indicator's color to RED, which enables you to access the DLY TIME parameter. Once accessed, just use the DLY knob to alter the value. Press and hold the switch

again to change the indicator's color to ORANGE, which enables you to access the REPEAT parameter. Just like before, use the DLY knob to alter this parameter.

*If you want to change the drum style, just use the MightyAmp™ APP or Mighty Editor™ edit software.

AUX IN jack

AUX IN



Connect a MP3 player into the 1/8" AUX IN jack to play audio tracks for jamming.

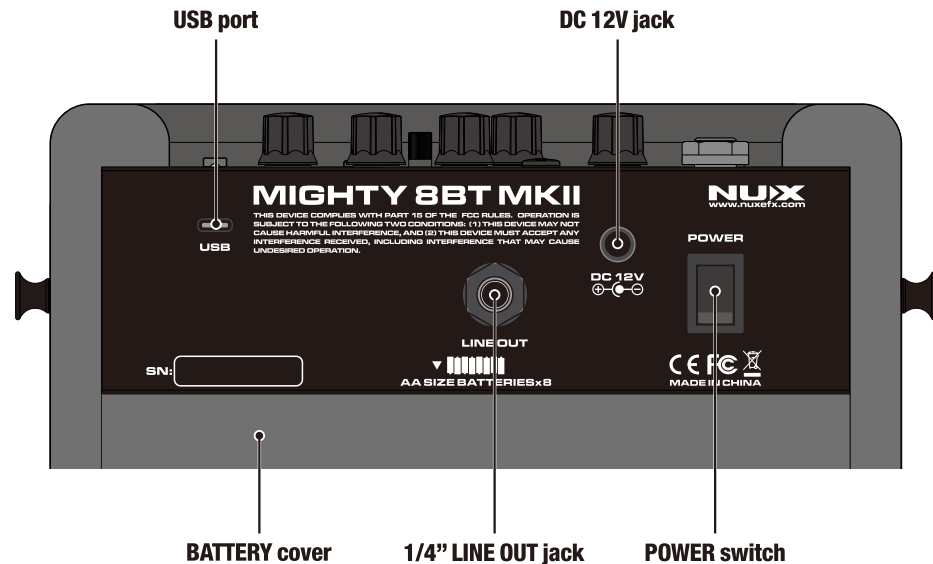
PHONES out jack

PHONES

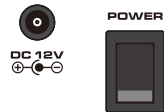


Connect with headphones for silent practicing, the MIGHTY 8BT MKII speaker will be automatically muted.

• Back Panel



DC 12V jack POWER switch



Connect the included power adaptor and toggle the POWER switch to turn on the MIGHTY 8BT MKII.

USB port



This port is for the Mighty Editor™ edit software, USB audio stream, and Firmware updates. Please note that the USB port cannot be used to power the amp.

Recording

For WIN OS, please go to the product page to download ASIO driver for recording.
For MAC OS, the device supports CORE AUDIO, so there is no need for driver.

Firmware Update

Connect to your PC via USB, then press and hold the DRUM S-TAP switch and turn on the device by toggling POWER switch to enter to DFU (Device Firmware Update) mode. Then use the DFU updater software to update the firmware. (You can get the firmware and firmware update guide on the product page.)

1/4" LINE OUT jack



The 1/4" LINE OUT jack supports TRS balanced output signal.. This means that the amp signal (including all of the processing) and the mic signal can be connected to a PA system or mixer.

BATTERY cover

If you're on the go, you can also operate the device with 8 AA batteries. We recommend using alkaline batteries. Maximum operation time is approx.8 hours.

To insert or change batteries, please remove the battery compartment cover by pulling the ribbon gently as shown in Figure 1. Be sure to observe the correct polarity, otherwise the device will not work or could be damaged as shown in Figure 2.

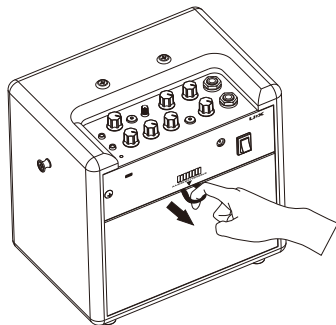


Figure 1

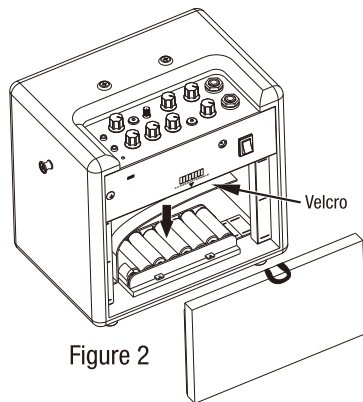


Figure 2

Be sure to check out the MIGHTY 8BT MKII tutorials on our NUX YouTube channel for more pro tips.

- 8 watts with 6.5" FRFR speaker portable Modeling Amplifier.
- MIC input.
- TSAC-HD (White-Box) Amp Modeling algorithm offers realistic playability & feedback.
- 512 samples IR resolution. (36 premium built-in IRs and 18 user slots for 3rd party)
- 7 presets with ACTIVE functions. (PRESET switch toggles ACTIVE ones sequentially)
- GATE, EFX, AMP, IR, MOD, DLY, RVB effect blocks.
- White-box algorithm EFX offers analog response and natural chaos.
- Patch Level function for each preset.
- Drum machine.
- Intuitive MightyAmp™ APP & Mighty Editor™ edit software(3rd party IR loader).
- USB-C: Mighty Editor™ edit software communication, USB audio stream, and Firmware update.
- 8 x AA batteries can drive 8 hrs.

Specifications

- INSTRUMENT Input Impedance: 1M Ω
- MIC Input Impedance: 6.2k Ω
- AUX In Impedance: 9.1k Ω
- Headphone Output: 280mW+280mW(To 33 ohms load)
- Sampling Rate: 48KHz / 32-bit
- System Latency: 1.42ms
- Current Draw: 12V DC 170mA
- Speaker: 6.5", 4 Ω , 10W
- Dimensions: 240mm (L) x 166mm (W) x 220mm (H)
- Weight: 2.96 kg

* Specification may change without notice.

Accessories

- Power adaptor
- Owner's manual
- Warranty card
- NUX sticker

