

LEQI

X1 Pro Odometer

Getting Started Guide

Welcome

Congratulations on your new X1 Pro! Designed for cycling enthusiasts, the X1 Pro helps you ride with confidence and perform at your best. You can view your cycling data, such as speed, cadence, distance and calories at a glance from the big screen.

LEQI X1 Pro is a great cycling device by itself, but you will get even more out of it when you use it together with the LEQI Lite app. **To find the full user manual, please enter LEQI Lite app on your mobile, go to More > Device Manual.** To check the video tutorials and the latest version of the user manual, please go to www.leqibike.com.

See the Important Information guide in the product box for product warnings and other important information.

Get Started

When using your device the first time, you should complete these tasks to set up the device and learn about the basic feature.

1. Install batteries
2. Sync with LEQI Lite app
3. Pair W1 with X1 Pro
4. Install W1
5. Install X1 Pro using the out-front mount
6. Go for a ride
7. Sync your ride to LEQI Lite app

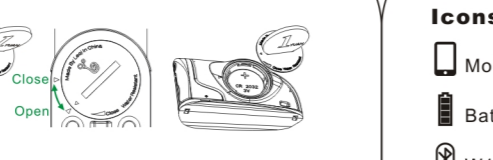
Watch the video tutorial



Installing Batteries

Please install the battery before use. To install batteries of your X1 Pro and W1, you need a coin and two batteries (CR2032), carefully follow the instructions below:

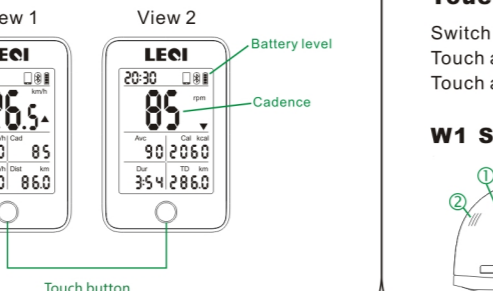
1. Using the coin open the device battery cover by pressing slightly and turning counterclockwise.



2. Remove the battery cover.
3. Place the battery (CR2032) inside the device with the positive (+) side against the cover and negative (-) side toward the device. Make sure the sealing ring is in the groove to ensure water resistance.
4. Put the battery cover back in its place and use the coin to close the cover by pressing slightly and turning clockwise. Make sure that the cover is closed properly!
5. When the battery is installed correctly, a four-digit device ID is displayed on the X1 Pro, the power button of W1 flashes green light for a second.

Get to know

X1 Pro Display and Button Functions



Icons

- Mobile is connected
- Battery level
- W1 speed & cadence sensor is connected

- The current speed/cadence is faster than the average speed/cadence
- The current speed/cadence is slower than the average speed/cadence

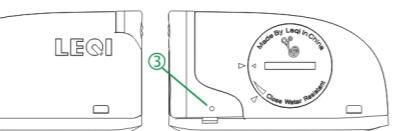
Abbreviations

Avs: Average speed (km/h)
Cad: Cadence (rpm)
Mas: Max speed (km/h)
Dist: Distance (km or kkm)
Avc: Average cadence (rpm)
Cal: Calories (kcal or kkal)
Dur: Duration
TD: Total distance (km or kkm)

Touch button functions

Switch training views with a short button touch
Touch and hold for 3 seconds to restart recording
Touch and hold for 6 seconds to turn X1 Pro off

W1 Structure and Button Functions



- ① Power button: press the power button to reboot the sensor, press and hold it for 10 seconds to remove pairing with the X1 Pro.
- ② Cadence sensor spot: the spot the pedal magnet should be pointing at when passing the sensor.
- ③ Speed sensor spot: the spot the spoke magnet should be pointing at when passing the sensor.

Sync with LEQI Lite App

Download LEQI Lite app from the App Store or Google Play and install it onto your mobile device.

Download LEQI Lite app



Before syncing make sure your mobile device has Bluetooth turned on, and airplane mode/flight mode is not turned on.

1. Enter LEQI Lite app on your mobile, go to Device > Connect/Sync.
2. If your X1 Pro is turned off, touch the button on the X1 Pro to activate it.
3. When you sync for the first time, you'll be asked whether you're pairing new device. Choose Pair. The app automatically starts searching for nearby X1 Pro(s).
4. The app lists the devices it finds. Tap the corresponding device ID you want to pair from the list. The pairing starts.

5. When pairing is completed successfully, go to Settings, you can set the wheel size, update firmware, remove pairing and modify other settings to suit your need.

Set the Wheel Size

Wheel size settings are a prerequisite for accurate cycling information. **Before going for a ride, please set the wheel size in LEQI Lite app > Device > Settings > Wheel Size.** There are two ways to determine the wheel size of your bike. For more information, please enter LEQI Lite app on your mobile, go to **More > Device Manual**, see *Set the Wheel Size*.

Pair W1 with X1 Pro

The pairing is done at the factory, when the batteries of your X1 Pro and W1 are installed correctly, your X1 Pro automatically starts searching for the paired W1 each time your X1 Pro is activated. Your X1 Pro is ready once the Bluetooth indicator in the upper right-hand corner of the screen is always on. If the Bluetooth indicator blinks for 30 seconds, then disappears, that means the pairing failed. Please touch the button on the X1 Pro to reactivate it.

If the pairing is removed or lost. Please perform the following steps for pairing.

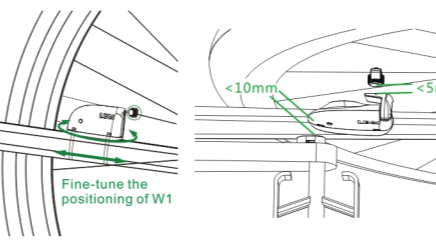
1. Enter LEQI Lite app on your mobile, go to Device > Settings > Speed & Cadence sensor. If no device is paired with the X1 Pro, you'll be asked whether you're pairing new device. Choose Pair. The app automatically starts searching for nearby W1(s). The X1 Pro should be less than three meters from the W1 you want to pair.

2. Press the power button of W1 to activate it. The flashing green light in the power button indicates that you've activated the W1.
3. The app lists the devices it finds. Tap the device you want to pair. The pairing starts.
4. When pairing is completed successfully, you can update the firmware of W1 and remove pairing. For more information, see the full user manual.

Installing W1

To install the W1 sensor and pedal magnet, you need cutters.

1. Check the chain stay for a suitable place for the W1 sensor. Do not install the sensor on the same side as the chain.
2. Clean and dry the place for the sensor and place the sensor on the chain stay. The LEQI logo on the sensor should be facing away from the wheel. Pass the cable ties over the sensor and rubber part. Do not tighten them fully yet.
3. Clean and dry the inner side of the crank thoroughly. Attach the pedal magnet to the inner side of the crank using the adhesive mount and a cable tie.



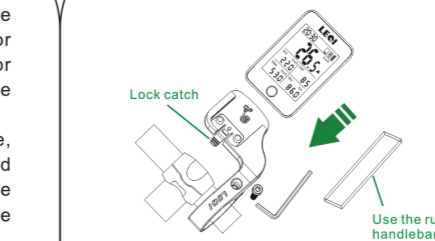
4. Fine-tune the positioning of the sensor so that the pedal magnet passes close to the cadence sensor spot without actually touching it. Tilt the sensor towards the magnet so that the gap between the cadence sensor spot and the magnet is under 10 mm.
5. Unscrew the spoke magnet from the plastic piece, place the spoke in the groove of the plastic piece and tighten slightly. Fine-tune the positioning of the spoke magnet so that the spoke magnet passes close to the speed sensor spot without actually touching it.
6. Loosen the screw on the sensor arm. Move the sensor arm to within 5mm of the spoke magnet.



7. Turn on the X1 Pro and make sure the W1 has been paired with the X1 Pro.
8. Pedal to test the sensor alignment.
9. When everything is aligned and working correctly, tighten the cable ties securely and cut off any excess cable tie ends, tighten the sensor arm and the spoke magnet.

Installing X1 Pro Using the Out-Front Mount

1. Select a secure location to mount your X1 Pro where it does not interfere with the safe operation of your bike.



2. Use the hex key to remove the screw from the handlebar connector.
 3. If the handlebar diameter is 25.4 mm, place the rubber pad around the handlebar, then place the handlebar connector around the rubber pad. If the handlebar diameter is 31.8 mm, place the handlebar connector around the handlebar without rubber pad.
 4. Replace and tighten the screw.
- NOTE: The maximum tightening torque of the screw is 0.6 Nm.** You should check the tightness of the screw periodically.
5. Slide the X1 Pro into the mount from front to back until you hear a distinct click.

Releasing the X1 Pro

1. Press down the lock catch on the back side of the mount.
2. Slide the X1 Pro out of the mount from back to front.

Going for a Ride

1. Touch the button of the X1 Pro to turn on the device.

2. If necessary, touch and hold the button for 3 seconds to restart recording.
3. Go for a ride to start the timer.
4. Touch the button to switch training views.
5. Stop your bike, then the timer will stop automatically.

Power off will help save the battery when the X1 Pro is not in use for a long period of time. You can manually turn off the X1 Pro by long touching the X1 Pro button for 6 seconds.

Sync Your Ride to LEQI Lite App

1. Enter LEQI Lite app on your mobile, go to Device > Sync.
2. If your X1 Pro is turned off, touch the button on the X1 Pro to activate it.

Technical Specifications

X1 Pro and W1
Battery type: CR2032
Operating temperature: -10 °C to +60 °C
Data transfer protocol: Bluetooth 4.0
Water resistance: IP65

Protected against wash splashes, sweat, raindrops, etc. Do not immerse the X1 Pro in water.
Mobile devices compatibility:
• iOS mobile devices iPhone 4S and later with iOS 8.0 or later
• Android mobile devices with Bluetooth 4.0 capability and Android 4.4 or later

Key Features

- Including a wireless speed & cadence sensor
- Record speed, cadence, distance, calories, etc.
- Large 2.2 inch HTN screen with white backlight
- Easy to change the battery (battery type: CR2032)
- Instant data sync with LEQI Lite app using BT 4.0
- Mobile devices compatibility: iOS 8.0 or Android 4.4 (or later)

Components



In addition, the product box includes: 2×battery, 1×Hex Key, 1×Mini Screwdriver, 1×rubber pad, several cable ties and 1×Getting Started Guide.

www.leqibike.com

Caution:

This equipment has been tested and found to comply with the limits for a Class B digital device, pursuant to part 15 of the FCC rules. These limits are designed to provide reasonable protection against harmful interference in a residential installation. This equipment generates uses and can radiate radio frequency energy and, if not installed and used in accordance with the instructions, may cause harmful interference to radio communications. However, there is no guarantee that interference will not occur in a particular installation. If this equipment does cause harmful interference to radio or television reception, which can be determined by turning the equipment off and on, the user is encouraged to try to correct the interference by one or more of the following measures:

- Reorient or relocate the receiving antenna.
- Increase the separation between the equipment and receiver.
- Connect the equipment into an outlet on a circuit different from that to which the receiver is connected.
- Consult the dealer or an experienced radio/TV technician for help.

This device complies with part 15 of the FCC rules. Operation is subject to the following two conditions: (1) This device may not cause harmful interference, and (2) this device must accept any interference received, including interference that may cause undesired operation.

Any Changes or modifications not expressly approved by the party responsible for compliance could void the user's authority to operate the equipment.

RF Exposure

The equipment complies with FCC radiation exposure limits set forth for an uncontrolled environment.