

sonash@cks

Bone Conduction Headphones



C=0 M=0 Y=0 K=0



PANTONE Process Black C

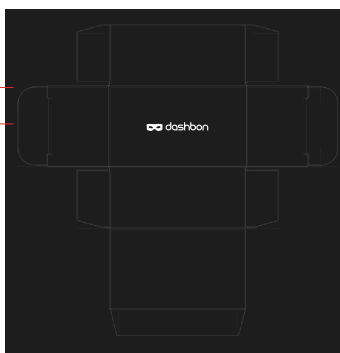


PANTONE P 179-8 C



PANTONE P 179-1 C

logo位置
18mm



小黑盒

配件盒正面燙銀公司LOGO
(2cm在正面 · 1cm折到側面)



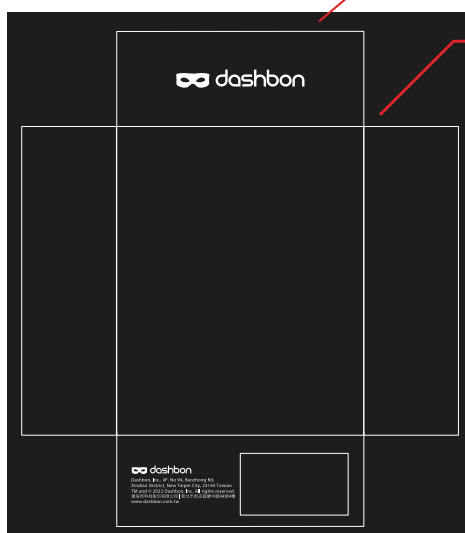
燙銀 黑稿



內盒(天地蓋下蓋)

請置中

LOGO及介紹的擺放方向





骨傳導式耳機
Bone Conduction Headphones

● 骨傳導式耳機，透過骨質傳導聲音，不經耳道，不塞耳朵，不損耳膜，不傷聽力，不影響周圍環境，不影響他人，不影響自己，不影響世界。

● 骨傳導式耳機，透過骨質傳導聲音，不經耳道，不塞耳朵，不損耳膜，不傷聽力，不影響周圍環境，不影響他人，不影響自己，不影響世界。

● 骨傳導式耳機，透過骨質傳導聲音，不經耳道，不塞耳朵，不損耳膜，不傷聽力，不影響周圍環境，不影響他人，不影響自己，不影響世界。



國際規格認證

認證	認證內容
CE	符合歐盟CE認證
FCC	符合美國FCC認證
RoHS	符合歐盟RoHS認證
REACH	符合歐盟REACH認證
UKCA	符合英國UKCA認證
CCC	符合中國CCC認證
BSMI	符合台灣BSMI認證

聆聽音樂

音樂	聆聽動作	多點動作
播放 / 暫停	按左 / 右	按左 / 右 (長按)
上一首 / 下一首	按左 / 右 (短按)	按左 / 右 (長按 2 秒)
播放 / 暫停	按左 / 右 (短按)	按左 / 右 (長按 2 秒)
上一首 / 下一首	按左 / 右 (短按)	按左 / 右 (長按 2 秒)
播放 / 暫停	按左 / 右 (短按)	按左 / 右 (長按 2 秒)
上一首 / 下一首	按左 / 右 (短按)	按左 / 右 (長按 2 秒)

打電話與語音

音樂	聆聽動作	多點動作
播放 / 暫停	按左 / 右	按左 / 右 (長按)
上一首 / 下一首	按左 / 右 (短按)	按左 / 右 (長按 2 秒)
播放 / 暫停	按左 / 右 (短按)	按左 / 右 (長按 2 秒)
上一首 / 下一首	按左 / 右 (短按)	按左 / 右 (長按 2 秒)
播放 / 暫停	按左 / 右 (短按)	按左 / 右 (長按 2 秒)
上一首 / 下一首	按左 / 右 (短按)	按左 / 右 (長按 2 秒)





sonashocks 2

Bone Conduction Headphones



IP67
Water-Resistant



Bluetooth
5.3



16mm Bone
Conduction Transducers



Open-Ear
Design



6 Hours of
Music & Calls

sonashocks 2

Bone Conduction Headphones



KaikuTeK
SoC inside

mmWave Gesture Recognition Technology



State-of-the-Art Gesture
Recognition Technology



Sound Leakage
Reduction Technology



Running



Hiking



Cycling



Driving



W53xH30mm
白色 圓角2mm

 dashbon
sonashocks 2

www.dashbon.com

Made in China 黑色 / Black

Model : DBBHA522

Serial No : SB09AAS281B001001

True Wireless Stereo Earbuds

EAN Code



4 712933 260401



SB09AAS283B001001

 Bluetooth®    廢電池
請回收  RoHS
COMPLIANT  CCAXXXXXXXXXXX

FCC Warning:

This equipment has been tested and found to comply with the limits for a Class B digital device, pursuant to part 15 of the FCC Rules. These limits are designed to provide reasonable protection against harmful interference in a residential installation. This equipment generates, uses and can radiate radio frequency energy and, if not installed and used in accordance with the instructions, may cause harmful interference to radio communications. However, there is no guarantee that interference will not occur in a particular installation. If this equipment does cause harmful interference to radio or television reception, which can be determined by turning the equipment off and on, the user is encouraged to try to correct the interference by one or more of the following measures:

- Reorient or relocate the receiving antenna.
- Increase the separation between the equipment and receiver.
- Connect the equipment into an outlet on a circuit different from that to which the receiver is connected.
- Consult the dealer or an experienced radio/TV technician for help.

Caution: Any changes or modifications to this device not explicitly approved by manufacturer could void your authority to operate this equipment.

This device complies with part 15 of the FCC Rules. Operation is subject to the following two conditions:

(1) This device may not cause harmful interference, and (2) this device must accept any interference received, including interference that may cause undesired operation.

This equipment complies with FCC radiation exposure limits set forth for an uncontrolled environment. This equipment should be installed and operated with minimum distance 0cm between the radiator and your body.